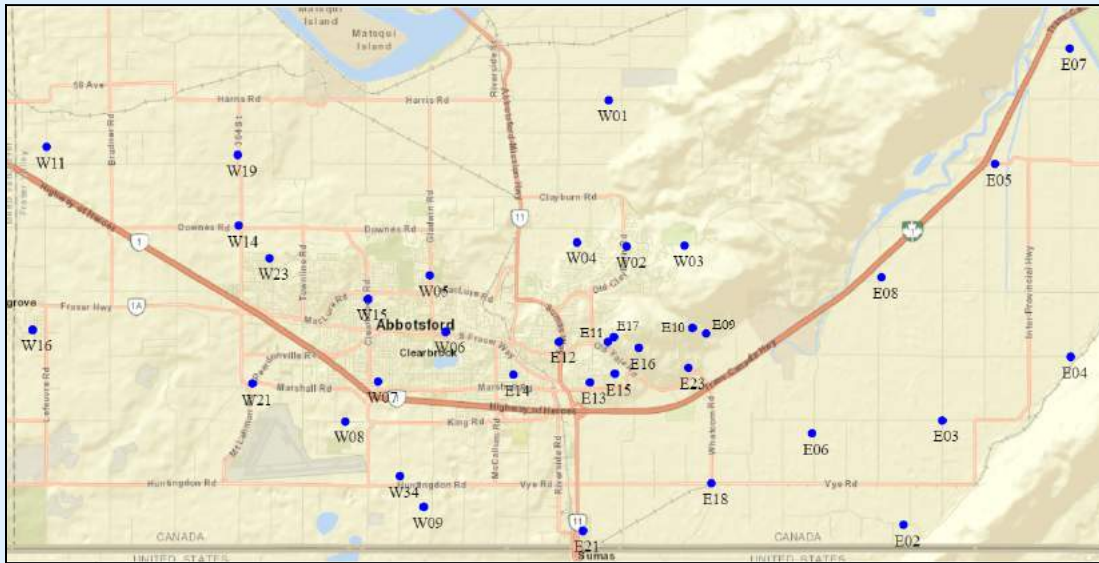


# City of Abbotsford Water Distribution System

Recent Water Quality Results

Updated: 2023-03-13 16:16

## Sample Locations



- Refer to following pages for results.
- Water quality parameter descriptions on last page.

### Week A

Southeast Route - E02, E07, E09, E10, E11, E12, E13, E14, E17, E18, W02, W03

Northwest Route - W01, W04, W05, W07, W11, W13, W15, W16, W19, W21, W23, W34

### Week B

Southeast Route - E07, E08, E09, E12, E13, E15, E16, E18, E21, E23, W02, W03

Northwest Route - W01, W04, W06, W07, W11, W13, W15, W16, W19, W21, W23, W34

Each week is tested biweekly.

### Questions?

City of Abbotsford Engineering

604-864-5511

[eng-info@abbotsford.ca](mailto:eng-info@abbotsford.ca)

# City of Abbotsford Water Distribution System

Recent Water Quality Results

Updated: 2023-03-13 16:16



	Turbidity	Total Chlorine	Total Coliforms (counts)	E.coli (counts)
Units	NTU	mg/L	CFU/100mL	CFU/100mL
<b>E02 - 310 Arnold Road</b>				
January 4	0.13	1.47	0	0
January 17	0.09	1.21	0	0
January 31	0.22	1.39	0	0
<b>E07 - 6230 Tolmie Road</b>				
January 4	0.17	1.27	0	0
January 10	0.13	1.42	0	0
January 17	0.07	1.19	0	0
January 24	0.12	1.14	0	0
January 31	0.15	1.19	0	0
<b>E08 - 3434 McDermott Road</b>				
January 10	0.21	1.25	0	0
January 24	0.13	1.13	0	0
<b>E09 - 36232 Lower Sumas Mountain Road</b>				
January 4	0.19	1.84	0	0
January 10	0.15	1.84	0	0
January 17	0.08	1.57	0	0
January 24	0.07	2.07	0	0
January 31	0.23	1.96	0	0
<b>E10 - 36101 Regal Parkway</b>				
January 4	0.16	1.93	0	0
January 17	0.07	1.72	0	0
January 31	0.20	1.94	0	0
<b>E11 - 2598 St. Moritz Way</b>				
January 4	0.14	1.93	0	0
January 17	0.08	1.70	0	0
January 31	0.17	1.81	0	0
<b>E12 - 2691 Beck Road</b>				
January 4	0.09	2.12	0	0
January 10	NT	1.94	0	0
January 17	0.07	1.69	0	0
January 24	0.12	2.00	0	0
January 31	0.16	2.05	0	0
<b>E13 - 2087 McMillan Road</b>				
January 4	0.18	1.98	0	0
January 10	0.17	1.89	0	0

# City of Abbotsford Water Distribution System

Recent Water Quality Results

Updated: 2023-03-13 16:16



	Turbidity	Total Chlorine	Total Coliforms (counts)	E.coli (counts)
Units	NTU	mg/L	CFU/100mL	CFU/100mL
<b>E13 - 2087 McMillan Road</b>				
January 17	0.07	1.73	0	0
January 24	0.18	1.87	0	0
January 31	0.12	1.91	0	0
<b>E14 - 2211 Mouldstade Road</b>				
January 4	0.12	1.73	0	0
January 17	0.06	1.38	0	0
January 31	0.09	1.26	0	0
<b>E15 - 2215 Orchard Drive</b>				
January 10	0.09	1.62	0	0
January 24	0.17	1.73	0	0
<b>E16 - 2540 Eagle Mountain Drive</b>				
January 10	0.11	1.75	0	0
January 24	0.19	1.54	0	0
<b>E17 - 2720 St. Moritz Way</b>				
January 4	0.14	1.86	0	0
January 17	0.08	1.61	0	0
January 31	0.13	1.69	0	0
<b>E18 - 36321 Vye Road</b>				
January 4	0.14	1.82	0	0
January 10	0.15	1.57	0	0
January 17	0.06	1.24	0	0
January 24	0.20	1.46	0	0
January 31	0.65	1.66	0	0
<b>E21 - 34694 5th Avenue</b>				
January 10	0.14	1.47	0	0
January 24	0.09	1.25	0	0
<b>E23 - 36026 Village Knoll</b>				
January 10	0.14	1.85	0	0
January 24	0.25	1.81	0	0
<b>W01 - 35041 Harris Road</b>				
January 4	0.13	1.77	0	0
January 10	0.13	1.83	0	0
January 17	0.30	1.38	0	0
January 24	0.23	1.55	0	0
January 31	0.09	1.68	0	0

# City of Abbotsford Water Distribution System

Recent Water Quality Results

Updated: 2023-03-13 16:16



	Turbidity	Total Chlorine	Total Coliforms (counts)	E.coli (counts)
Units	NTU	mg/L	CFU/100mL	CFU/100mL
<b>W02 - 3836 Old Clayburn Road</b>				
January 4	0.13	2.01	0	0
January 10	0.10	1.96	0	0
January 17	0.07	1.75	0	0
January 24	0.11	1.92	0	0
January 31	0.13	2.01	0	0
<b>W03 - 35944 McKee Road</b>				
January 4	0.10	1.95	0	0
January 10	0.10	1.89	0	0
January 17	0.07	1.85	0	0
January 24	0.25	1.79	0	0
January 31	0.17	1.83	0	0
<b>W04 - 34638 Bateman Road</b>				
January 4	0.14	1.34	0	0
January 10	0.09	1.28	0	0
January 17	0.08	1.32	0	0
January 24	0.11	1.27	0	0
January 31	0.08	1.33	0	0
<b>W05 - 3315 Gladwin Road</b>				
January 4	0.27	2.16	0	0
January 17	0.13	1.68	0	0
January 31	0.09	1.79	0	0
<b>W06 - 32961 South Fraser Way</b>				
January 10	0.17	1.54	0	0
January 24	0.08	1.50	0	0
<b>W07 - 32111 Joyce Avenue</b>				
January 4	0.07	1.36	0	0
January 10	0.07	1.65	0	0
January 17	0.10	1.49	0	0
January 24	0.06	1.49	0	0
January 31	0.06	1.48	0	0
<b>W11 - 5030 Lefeuve Road</b>				
January 4	0.28	2.06	0	0
January 10	0.08	1.57	0	0
January 17	0.13	1.62	0	0
January 24	0.23	1.81	0	0
January 31	0.10	1.63	0	0

# City of Abbotsford Water Distribution System

Recent Water Quality Results

Updated: 2023-03-13 16:16



	Turbidity	Total Chlorine	Total Coliforms (counts)	E.coli (counts)
Units	NTU	mg/L	CFU/100mL	CFU/100mL
<b>W13 - 7942 Bradner Road</b>				
January 4	0.29	1.58	0	0
January 10	0.23	1.46	0	0
January 17	0.13	1.36	0	0
January 24	0.11	1.27	0	0
January 31	0.15	1.33	0	0
<b>W15 - 3154 Clearbrook Road</b>				
January 4	0.24	2.28	0	0
January 10	0.07	1.91	0	0
January 17	0.09	1.72	0	0
January 24	0.22	2.04	0	0
January 31	0.08	1.96	0	0
<b>W16 - 27875 Swensson Avenue</b>				
January 4	0.16	1.68	0	0
January 10	0.23	1.72	0	0
January 17	0.13	1.67	0	0
January 24	0.15	1.72	0	0
January 31	0.08	1.74	0	0
<b>W19 - 4945 Mt. Lehman Road</b>				
January 4	0.30	2.39	0	0
January 10	0.10	1.83	0	0
January 17	0.13	1.77	0	0
January 24	0.13	1.70	0	0
January 31	0.10	2.12	0	0
<b>W21 - 2059 Peardonville Road</b>				
January 4	0.17	1.37	0	0
January 10	0.08	1.22	0	0
January 17	0.14	1.44	0	0
January 24	0.07	1.30	0	0
January 31	0.10	1.31	0	0
<b>W23 - 3612 Blue Jay Street</b>				
January 4	0.18	2.02	0	0
January 10	0.06	1.87	0	0
January 17	0.10	1.72	0	0
January 24	0.16	1.91	0	0
January 31	0.11	1.91	0	0

# City of Abbotsford Water Distribution System

Recent Water Quality Results

Updated: 2023-03-13 16:16



	Turbidity	Total Chlorine	Total Coliforms (counts)	E.coli (counts)
Units	NTU	mg/L	CFU/100mL	CFU/100mL
<b>W34 - 926 Columbia Street</b>				
January 4	0.15	1.27	0	0
January 10	0.15	1.20	0	0
January 17	0.13	1.08	0	0
January 24	0.08	1.09	0	0
January 31	0.09	1.14	0	0
<b>Blank Cell = No Data Collected</b>				

# City of Abbotsford Water Distribution System

Recent Water Quality Results

Updated: 2023-03-13 16:16



Parameter	Description	Acceptable Range
<b>Turbidity</b>	Suspended matter that interferes with the clarity of the water. While not a health concern itself, turbidity is an indicator of possible contamination.	There are no regulations for distribution system turbidity; water system operators aim for less than 1.0 NTU.
<b>Total Chlorine</b>	Used to monitor the level of disinfectant used to inactivate microorganisms such as bacteria and viruses.	There are no regulations for distribution system total chlorine; system operators aim to maintain a detectable residual. As long as there are no total coliforms, lower values are not a concern. Higher values are not deemed a health concern unless they exceed the World Health Organization's recommended limit of 5ppm.
<b>Total Coliforms</b>	A group of bacteria that generally do not cause human disease, but their presence in water may indicate possible contamination.	The BC Drinking Water Act stipulates that no more than 10% of samples during a 30-day period may be positive for Total Coliforms and that no single sample may contain more than 10 counts.
<b>E. Coli</b>	A member of the Total Coliform group and its presence in water indicates contamination.	The BC Drinking Water Act stipulates that no E.Coli should be detected in drinking water.

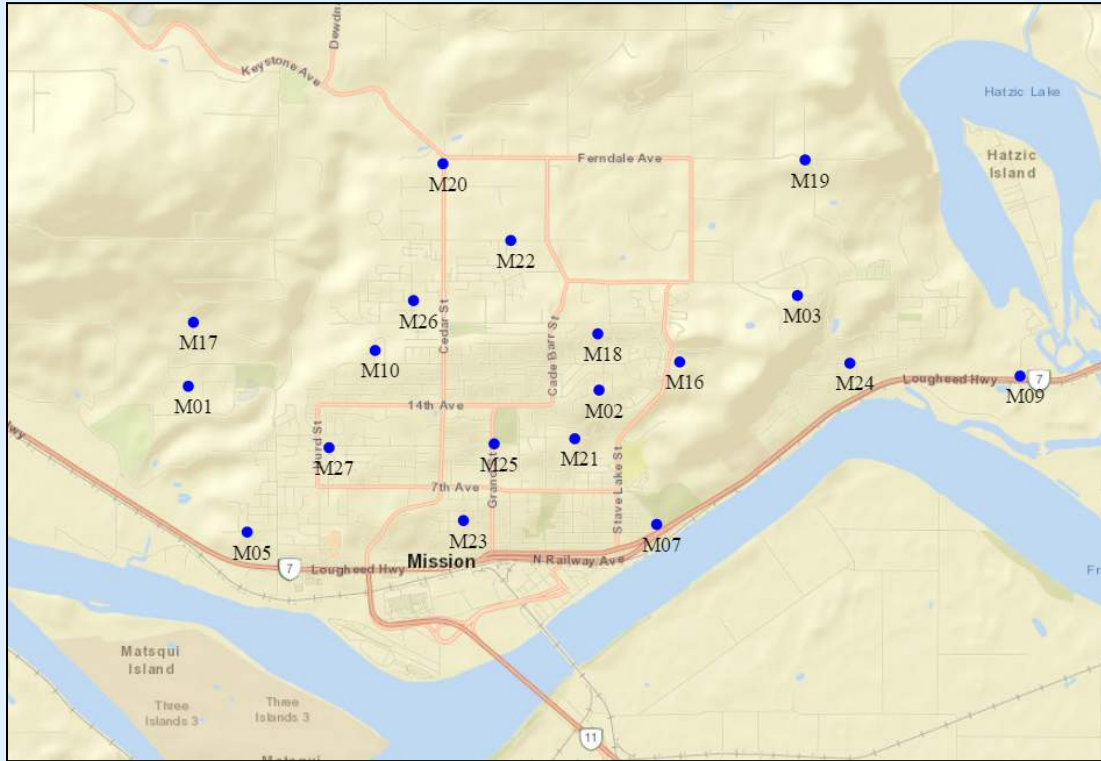
**Note: Turbidity and Total Chlorine are measured with field instruments. Result trends are used as indicators of significant water quality changes; specific values are not necessarily accurate.**

# City of Mission Water Distribution System

Recent Water Quality Results

Updated: 2023-03-13 16:33

## Sample Locations



- Refer to following pages for results.
- Water quality parameter descriptions on last page.

Route A - M1, M16, M19, M21, M22, M23, M24, M26, M27

Route B - M2, M3, M4, M5, M7, M9, M17, M18, M20, M25

Each route is tested biweekly.

### Questions?

District of Mission Public Works

604-820-3769



# City of Mission Water Distribution System

Recent Water Quality Results

Updated: 2023-03-13 16:33



	Turbidity	Total Chlorine	Total Coliforms (counts)	E.coli (counts)
Units	NTU	mg/L	CFU/100mL	CFU/100mL
<b>M01 - Israel</b>				
January 4	0.28	2.29	0	0
January 17	0.18	1.71	0	0
January 31	0.23	1.89	0	0
<b>M02 - Balsam</b>				
January 10	0.44	2.15	0	0
January 24	0.30	1.95	0	0
<b>M03 - Penner</b>				
January 10	0.34	2.28	0	0
January 24	0.31	2.31	0	0
<b>M05 - Hillcrest</b>				
January 10	0.14	2.05	0	0
January 24	0.32	2.50	0	0
<b>M07 - 4th &amp; Mary</b>				
January 10	0.14	1.97	0	0
January 24	0.10	1.79	0	0
<b>M09 - Shook</b>				
January 10	0.13	2.05	0	0
January 24	0.26	1.89	0	0
<b>M10 - Miller</b>				
January 10	0.41	1.98	0	0
January 24	0.35	1.89	0	0
<b>M16 - Best @ Barker</b>				
January 4	0.31	2.31	0	0
January 17	0.32	2.09	0	0
January 31	0.29	2.08	0	0
<b>M17 - TH Booster</b>				
January 10	0.13	1.74	0	0
January 24	0.18	1.70	0	0
<b>M18 - Blueberry</b>				
January 10	0.32	2.32	0	0
January 24	0.32	2.49	0	0
<b>M19 - Ferndale @ Erikson</b>				
January 4	0.29	2.37	0	0
January 17	0.29	2.29	0	0

# City of Mission Water Distribution System

Recent Water Quality Results

Updated: 2023-03-13 16:33



	Turbidity	Total Chlorine	Total Coliforms (counts)	E.coli (counts)
Units	NTU	mg/L	CFU/100mL	CFU/100mL
<b>M19 - Ferndale @ Erikson</b>				
January 31	0.25	2.23	0	0
<b>M20 - DTR &amp; Cedar</b>				
January 10	0.51	2.52	0	0
January 24	0.38	2.53	0	0
<b>M21 - 11th &amp; Dunsmuir</b>				
January 4	0.11	2.08	0	0
January 17	0.12	1.87	0	0
January 31	0.07	2.02	0	0
<b>M22 - Tunbridge @ DTR</b>				
January 4	0.34	2.43	0	0
January 17	0.29	2.31	0	0
January 31	0.35	2.29	0	0
<b>M23 - 4th @ Alder</b>				
January 4	0.33	2.49	0	0
January 17	0.09	1.88	0	0
January 31	0.09	1.93	0	0
<b>M24 - Moffat</b>				
January 4	0.07	2.21	0	0
January 17	0.11	1.91	0	0
January 31	0.10	2.04	0	0
<b>M25 - 11th &amp; Grand</b>				
January 10	0.20	1.95	0	0
January 24	0.11	1.73	0	0
<b>M26 - Fennel</b>				
January 4	0.35	2.29	0	0
January 17	0.34	2.30	0	0
January 31	0.50	2.23	0	0
<b>M27 - McRae &amp; Hurd</b>				
January 4	0.27	2.45	0	0
January 17	0.16	1.93	0	0
January 31	0.29	2.14	0	0
<b>Blank Cell = No Data Collected</b>				

# City of Mission Water Distribution System

Recent Water Quality Results

Updated: 2023-03-13 16:33



Parameter	Description	Acceptable Range
<b>Turbidity</b>	Suspended matter that interferes with the clarity of the water. While not a health concern itself, turbidity is an indicator of possible contamination.	There are no regulations for distribution system turbidity; water system operators aim for less than 1.0 NTU.
<b>Total Chlorine</b>	Used to monitor the level of disinfectant used to inactivate microorganisms such as bacteria and viruses.	There are no regulations for distribution system total chlorine; system operators aim to maintain a detectable residual. As long as there are no total coliforms, lower values are not a concern. Higher values are not deemed a health concern unless they exceed the World Health Organization's recommended limit of 5ppm.
<b>Total Coliforms</b>	A group of bacteria that generally do not cause human disease, but their presence in water may indicate possible contamination.	The BC Drinking Water Act stipulates that no more than 10% of samples during a 30-day period may be positive for Total Coliforms and that no single sample may contain more than 10 counts.
<b>E. Coli</b>	A member of the Total Coliform group and its presence in water indicates contamination.	The BC Drinking Water Act stipulates that no E.Coli should be detected in drinking water.

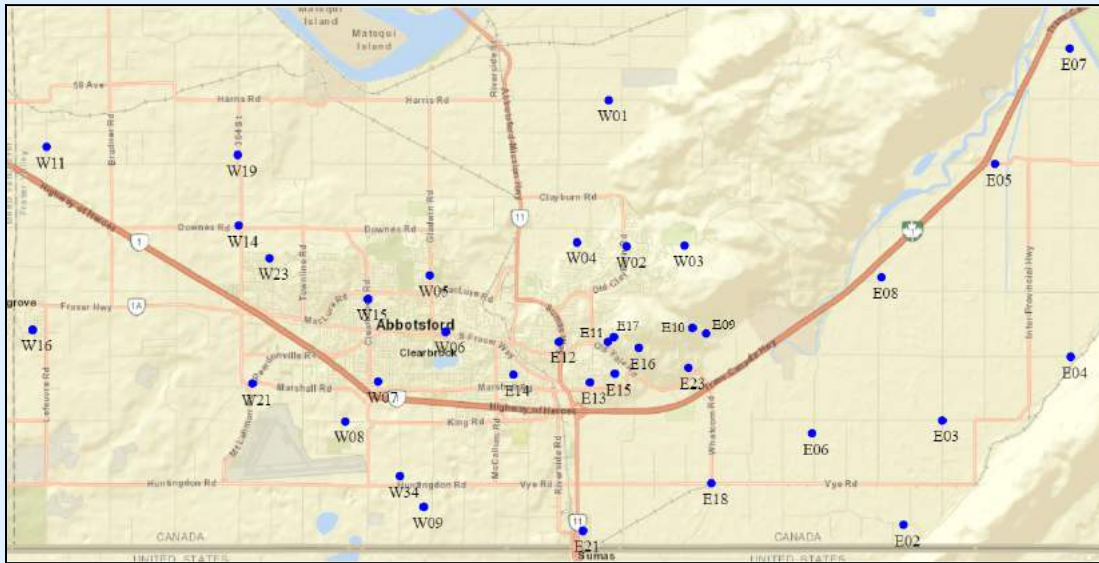
**Note: Turbidity and Total Chlorine are measured with field instruments. Result trends are used as indicators of significant water quality changes; specific values are not necessarily accurate.**

# City of Abbotsford Water Distribution System

Recent Water Quality Results

Updated: 2023-03-16 11:37

## Sample Locations



- Refer to following pages for results.
- Water quality parameter descriptions on last page.

### Week A

Southeast Route - E02, E07, E09, E10, E11, E12, E13, E14, E17, E18, W02, W03

Northwest Route - W01, W04, W05, W07, W11, W13, W15, W16, W19, W21, W23, W34

### Week B

Southeast Route - E07, E08, E09, E12, E13, E15, E16, E18, E21, E23, W02, W03

Northwest Route - W01, W04, W06, W07, W11, W13, W15, W16, W19, W21, W23, W34

Each week is tested biweekly.

### Questions?

City of Abbotsford Engineering

604-864-5511

[eng-info@abbotsford.ca](mailto:eng-info@abbotsford.ca)

# City of Abbotsford Water Distribution System

Recent Water Quality Results

Updated: 2023-03-16 11:37



	Turbidity	Total Chlorine	Total Coliforms (counts)	E.coli (counts)
Units	NTU	mg/L	CFU/100mL	CFU/100mL
<b>E02 - 310 Arnold Road</b>				
February 14	0.10	0.83	0	0
February 28	0.26	1.06	0	0
<b>E07 - 6230 Tolmie Road</b>				
February 7	0.08	1.15	0	0
February 14	0.14	0.75	0	0
February 22	0.11	0.78	0	0
February 28	0.19	0.95	0	0
<b>E08 - 3434 McDermott Road</b>				
February 7	0.12	1.41	0	0
February 22	0.17	0.93	0	0
<b>E09 - 36232 Lower Sumas Mountain Road</b>				
February 7	0.27	1.93	0	0
February 14	0.34	1.73	0	0
February 22	0.33	1.87	0	0
February 28	0.12	1.78	0	0
<b>E10 - 36101 Regal Parkway</b>				
February 14	0.09	1.78	0	0
February 28	0.09	1.84	0	0
<b>E11 - 2598 St. Moritz Way</b>				
February 14	0.10	1.70	0	0
February 28	0.32	1.66	0	0
<b>E12 - 2691 Beck Road</b>				
February 7	0.11	1.93	0	0
February 14	0.11	1.90	0	0
February 22	0.21	1.72	0	0
February 28	0.13	1.88	0	0
<b>E13 - 2087 McMillan Road</b>				
February 7	0.08	1.97	0	0
February 14	0.07	1.77	0	0
February 22	0.23	1.80	0	0
February 28	0.24	1.82	0	0
<b>E14 - 2211 Mouldstade Road</b>				
February 14	0.18	0.86	0	0
February 28	0.07	1.38	0	0

# City of Abbotsford Water Distribution System

Recent Water Quality Results

Updated: 2023-03-16 11:37



	Turbidity	Total Chlorine	Total Coliforms (counts)	E.coli (counts)
Units	NTU	mg/L	CFU/100mL	CFU/100mL
<b>E15 - 2215 Orchard Drive</b>				
February 7	0.16	1.67	0	0
February 22	0.11	1.78	0	0
<b>E16 - 2540 Eagle Mountain Drive</b>				
February 7	0.09	1.65	0	0
February 22	0.15	1.77	0	0
<b>E17 - 2720 St. Moritz Way</b>				
February 14	0.07	1.60	0	0
February 28	0.11	1.63	0	0
<b>E18 - 36321 Vye Road</b>				
February 7	0.13	1.45	0	0
February 14	0.24	0.96	0	0
February 22	0.26	1.12	0	0
February 28	0.47	1.28	0	0
<b>E21 - 34694 5th Avenue</b>				
February 7	0.55	1.18	1.0*	0
February 9			0	0
February 10			0	0
February 22	0.18	0.92	0	0
<b>E23 - 36026 Village Knoll</b>				
February 7	0.14	1.98	0	0
February 22	0.14	1.89	0	0
<b>W01 - 35041 Harris Road</b>				
February 7	0.15	1.96	0	0
February 14	0.09	1.89	0	0
February 22	0.06	1.62	0	0
February 28	0.10	1.86	0	0
<b>W02 - 3836 Old Clayburn Road</b>				
February 7	0.37	1.86	0	0
February 14	0.07	1.88	0	0
February 22	0.14	1.67	0	0
February 28	0.12	1.97	0	0
<b>W03 - 35944 McKee Road</b>				
February 7	0.13	1.94	0	0
February 14	0.10	1.70	0	0
February 22	0.13	1.75	0	0

# City of Abbotsford Water Distribution System

Recent Water Quality Results

Updated: 2023-03-16 11:37



	Turbidity	Total Chlorine	Total Coliforms (counts)	E.coli (counts)
Units	NTU	mg/L	CFU/100mL	CFU/100mL
<b>W03 - 35944 McKee Road</b>				
February 28	0.24	1.81	0	0
<b>W04 - 34638 Bateman Road</b>				
February 7	0.13	1.38	0	0
February 14	0.09	1.27	0	0
February 22	0.09	1.44	0	0
February 28	0.08	1.41	0	0
<b>W05 - 3315 Gladwin Road</b>				
February 14	0.09	1.74	0	0
February 28	0.09	1.58	0	0
<b>W06 - 32961 South Fraser Way</b>				
February 7	0.12	1.38	0	0
February 22	0.05	1.55	0	0
<b>W07 - 32111 Joyce Avenue</b>				
February 7	0.20	1.51	0	0
February 14	0.09	1.42	0	0
February 22	0.09	1.41	0	0
February 28	0.09	1.41	0	0
<b>W11 - 5030 Lefeuvre Road</b>				
February 7	0.11	1.71	0	0
February 14	0.18	1.55	0	0
February 22	0.08	1.62	0	0
February 28	0.14	1.82	0	0
<b>W13 - 7942 Bradner Road</b>				
February 7	0.11	1.40	0	0
February 14	0.18	1.27	0	0
February 22	0.09	1.61	0	0
February 28	0.10	1.40	0	0
<b>W15 - 3154 Clearbrook Road</b>				
February 7	0.17	2.03	0	0
February 14	0.12	1.87	0	0
February 22	0.14	1.96	0	0
February 28	0.10	1.96	0	0
<b>W16 - 27875 Swensson Avenue</b>				
February 7	0.22	1.91	0	0
February 14	0.32	1.66	0	0

# City of Abbotsford Water Distribution System

Recent Water Quality Results

Updated: 2023-03-16 11:37



	Turbidity	Total Chlorine	Total Coliforms (counts)	E.coli (counts)
Units	NTU	mg/L	CFU/100mL	CFU/100mL
<b>W16 - 27875 Swensson Avenue</b>				
February 22	0.13	1.79	0	0
February 28	0.10	1.68	0	0
<b>W19 - 4945 Mt. Lehman Road</b>				
February 7	0.14	2.06	0	0
February 14	0.19	1.82	0	0
February 22	0.28	1.61	0	0
February 28	0.08	1.98	0	0
<b>W21 - 2059 Peardonville Road</b>				
February 7	0.23	1.27	0	0
February 14	0.29	1.43	0	0
February 22	0.27	1.36	0	0
February 28	0.17	1.38	0	0
<b>W23 - 3612 Blue Jay Street</b>				
February 7	0.23	2.02	0	0
February 14	0.18	1.82	0	0
February 22	0.11	1.98	0	0
February 28	0.09	2.01	0	0
<b>W34 - 926 Columbia Street</b>				
February 7	0.25	1.25	0	0
February 14	0.52	0.72	0	0
February 22	0.10	0.94	0	0
February 28	0.09	1.39	0	0
<b>Blank Cell = No Data Collected</b>				



# City of Abbotsford Water Distribution System

## Recent Water Quality Results

Updated: 2023-03-16 11:37



Parameter	Description	Acceptable Range
<b>Turbidity</b>	Suspended matter that interferes with the clarity of the water. While not a health concern itself, turbidity is an indicator of possible contamination.	There are no regulations for distribution system turbidity; water system operators aim for less than 1.0 NTU.
<b>Total Chlorine</b>	Used to monitor the level of disinfectant used to inactivate microorganisms such as bacteria and viruses.	There are no regulations for distribution system total chlorine; system operators aim to maintain a detectable residual. As long as there are no total coliforms, lower values are not a concern. Higher values are not deemed a health concern unless they exceed the World Health Organization's recommended limit of 5ppm.
<b>Total Coliforms</b>	A group of bacteria that generally do not cause human disease, but their presence in water may indicate possible contamination.	The BC Drinking Water Act stipulates that no more than 10% of samples during a 30-day period may be positive for Total Coliforms and that no single sample may contain more than 10 counts.
<b>E. Coli</b>	A member of the Total Coliform group and its presence in water indicates contamination.	The BC Drinking Water Act stipulates that no E.Coli should be detected in drinking water.

**Note: Turbidity and Total Chlorine are measured with field instruments. Result trends are used as indicators of significant water quality changes; specific values are not necessarily accurate.**

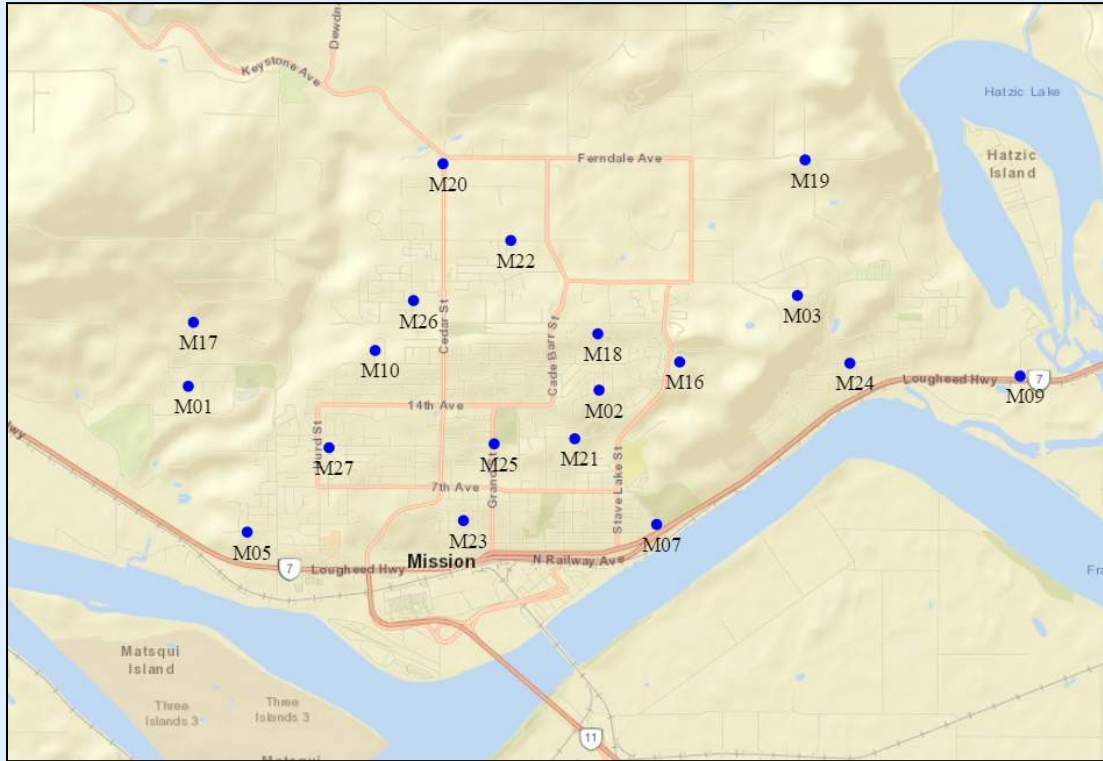
**\*One TC count detected. Resamples were non-detect. Fraser Health is informed of all adverse results and resamples.**

# City of Mission Water Distribution System

Recent Water Quality Results

Updated: 2023-03-16 11:38

## Sample Locations



- Refer to following pages for results.
- Water quality parameter descriptions on last page.

Route A - M1, M16, M19, M21, M22, M23, M24, M26, M27

Route B - M2, M3, M4, M5, M7, M9, M17, M18, M20, M25

Each route is tested biweekly.

### Questions?

District of Mission Public Works

604-820-3769

# City of Mission Water Distribution System

Recent Water Quality Results

Updated: 2023-03-16 11:38



	Turbidity	Total Chlorine	Total Coliforms (counts)	E.coli (counts)
Units	NTU	mg/L	CFU/100mL	CFU/100mL
<b>M01 - Israel</b>				
February 14	0.45	1.77	0	0
February 28	0.19	1.80	0	0
<b>M02 - Balsam</b>				
February 7	0.36	2.20	0	0
February 22	0.32	1.80	0	0
<b>M03 - Penner</b>				
February 7	0.36	1.88	0	0
February 22	0.34	2.07	0	0
<b>M05 - Hillcrest</b>				
February 7	0.22	2.01	0	0
February 22	0.40	1.66	0	0
<b>M07 - 4th &amp; Mary</b>				
February 7	0.13	1.77	0	0
February 22	0.17	1.78	0	0
<b>M09 - Shook</b>				
February 7	0.18	1.78	0	0
February 22	0.10	1.83	0	0
<b>M10 - Miller</b>				
February 7	0.39	2.03	0	0
February 22	0.13	1.66	0	0
<b>M16 - Best @ Barker</b>				
February 14	0.30	2.07	0	0
February 28	0.12	1.80	0	0
<b>M17 - TH Booster</b>				
February 7	0.23	1.86		
February 14	0.25	1.63	0	0
February 22	0.11	1.74	0	0
<b>M18 - Blueberry</b>				
February 7	0.39	2.33	0	0
February 22	0.39	2.36	0	0
<b>M19 - Ferndale @ Erikson</b>				
February 14	0.28	2.06	0	0
February 28	0.28	2.60	0	0

# City of Mission Water Distribution System

Recent Water Quality Results

Updated: 2023-03-16 11:38



	Turbidity	Total Chlorine	Total Coliforms (counts)	E.coli (counts)
Units	NTU	mg/L	CFU/100mL	CFU/100mL
<b>M20 - DTR &amp; Cedar</b>				
February 7	0.33	2.21	0	0
February 22	0.31	2.57	0	0
<b>M21 - 11th &amp; Dunsmuir</b>				
February 14	0.12	1.98	0	0
February 28	0.06	2.07	0	0
<b>M22 - Tunbridge @ DTR</b>				
February 14	0.29	2.14	0	0
February 28	0.26	2.66	0	0
<b>M23 - 4th @ Alder</b>				
February 14	0.37	1.93	0	0
February 28	0.11	2.09	0	0
<b>M24 - Moffat</b>				
February 14	0.14	1.98	0	0
February 28	0.09	2.11	0	0
<b>M25 - 11th &amp; Grand</b>				
February 7	0.14	1.71	0	0
February 22	0.13	1.71	0	0
<b>M26 - Fennel</b>				
February 14	0.55	2.21	0	0
February 28	0.27	2.73	0	0
<b>M27 - McRae &amp; Hurd</b>				
February 14	0.10	2.01	0	0
February 28	0.08	2.07	0	0
<b>Blank Cell = No Data Collected</b>				

# City of Mission Water Distribution System

Recent Water Quality Results

Updated: 2023-03-16 11:38



Parameter	Description	Acceptable Range
<b>Turbidity</b>	Suspended matter that interferes with the clarity of the water. While not a health concern itself, turbidity is an indicator of possible contamination.	There are no regulations for distribution system turbidity; water system operators aim for less than 1.0 NTU.
<b>Total Chlorine</b>	Used to monitor the level of disinfectant used to inactivate microorganisms such as bacteria and viruses.	There are no regulations for distribution system total chlorine; system operators aim to maintain a detectable residual. As long as there are no total coliforms, lower values are not a concern. Higher values are not deemed a health concern unless they exceed the World Health Organization's recommended limit of 5ppm.
<b>Total Coliforms</b>	A group of bacteria that generally do not cause human disease, but their presence in water may indicate possible contamination.	The BC Drinking Water Act stipulates that no more than 10% of samples during a 30-day period may be positive for Total Coliforms and that no single sample may contain more than 10 counts.
<b>E. Coli</b>	A member of the Total Coliform group and its presence in water indicates contamination.	The BC Drinking Water Act stipulates that no E.Coli should be detected in drinking water.

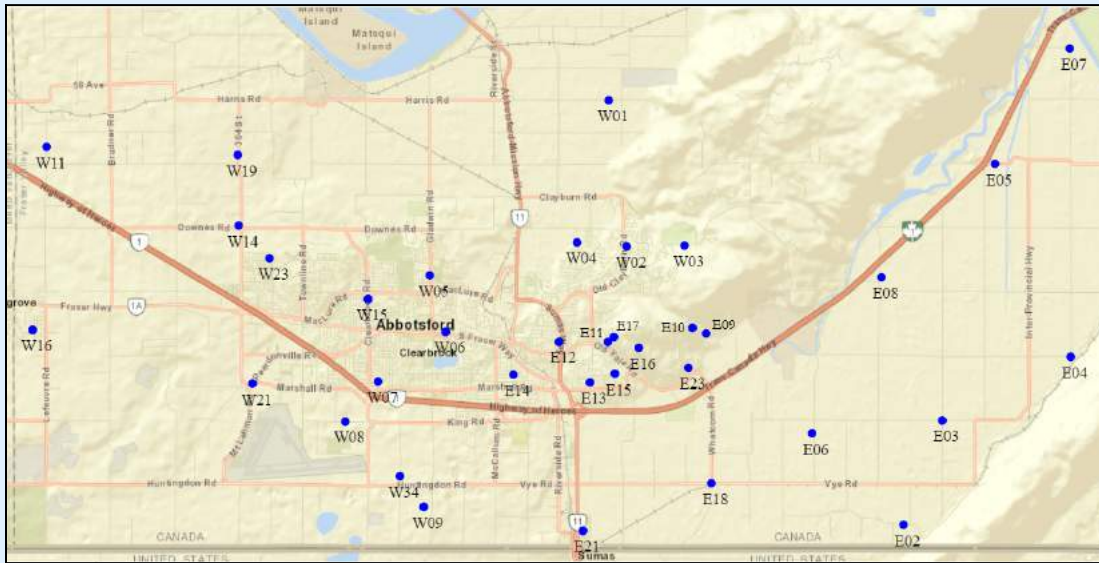
**Note: Turbidity and Total Chlorine are measured with field instruments. Result trends are used as indicators of significant water quality changes; specific values are not necessarily accurate.**

# City of Abbotsford Water Distribution System

Recent Water Quality Results

Updated: 2023-05-19 13:40

## Sample Locations



- Refer to following pages for results.
- Water quality parameter descriptions on last page.

### Week A

Southeast Route - E02, E07, E09, E10, E11, E12, E13, E14, E17, E18, W02, W03

Northwest Route - W01, W04, W05, W07, W11, W13, W15, W16, W19, W21, W23, W34

### Week B

Southeast Route - E07, E08, E09, E12, E13, E15, E16, E18, E21, E23, W02, W03

Northwest Route - W01, W04, W06, W07, W11, W13, W15, W16, W19, W21, W23, W34

Each week is tested biweekly.

### Questions?

City of Abbotsford Engineering

604-864-5511

[eng-info@abbotsford.ca](mailto:eng-info@abbotsford.ca)

# City of Abbotsford Water Distribution System

Recent Water Quality Results

Updated: 2023-05-19 13:40



	Turbidity	Total Chlorine	Total Coliforms (counts)	E.coli (counts)
Units	NTU	mg/L	CFU/100mL	CFU/100mL
<b>E02 - 310 Arnold Road</b>				
March 14	0.16	1.74	0	0
March 28	0.19	1.66	0	0
<b>E07 - 6230 Tolmie Road</b>				
March 7	<0.10	1.22	0	0
March 14	0.14	1.27	0	0
March 21	0.20	1.32	0	0
March 28	0.12	1.27	0	0
<b>E08 - 3434 McDermott Road</b>				
March 7	0.45	1.53	0	0
March 21	0.22	1.51	0	0
<b>E09 - 36232 Lower Sumas Mountain Road</b>				
March 7	<0.10	2.01	0	0
March 14	0.19	2.01	0	0
March 21	0.22	1.84	0	0
March 28	0.27	1.80	0	0
<b>E10 - 36101 Regal Parkway</b>				
March 14	0.13	2.00	0	0
March 28	0.16	1.92	0	0
<b>E11 - 2598 St. Moritz Way</b>				
March 14	0.23	1.83	0	0
March 28	0.13	1.68	0	0
<b>E12 - 2691 Beck Road</b>				
March 7	0.15	2.04	0	0
March 14	0.20	2.15	0	0
March 21	0.15	1.98	0	0
March 28	0.11	2.00	0	0
<b>E13 - 2087 McMillan Road</b>				
March 7	0.10	2.14	0	0
March 14	0.17	2.14	0	0
March 21	0.13	1.93	0	0
March 28	0.25	1.89	0	0
<b>E14 - 2211 Mouldstade Road</b>				
March 14	0.08	1.47	0	0
March 28	0.10	1.31	0	0

# City of Abbotsford Water Distribution System

Recent Water Quality Results

Updated: 2023-05-19 13:40



	Turbidity	Total Chlorine	Total Coliforms (counts)	E.coli (counts)
Units	NTU	mg/L	CFU/100mL	CFU/100mL
<b>E15 - 2215 Orchard Drive</b>				
March 7	<0.10	1.63	0	0
March 21	0.34	1.58	0	0
<b>E16 - 2540 Eagle Mountain Drive</b>				
March 7	<0.10	1.68	0	0
March 21	0.14	1.68	0	0
<b>E17 - 2720 St. Moritz Way</b>				
March 14	0.19	1.92	0	0
March 28	0.10	1.77	0	0
<b>E18 - 36321 Vye Road</b>				
March 7	0.85	1.66	0	0
March 14	0.26	1.64	0	0
March 21	0.23	1.60	0	0
March 28	0.12	1.68	0	0
<b>E21 - 34694 5th Avenue</b>				
March 7	0.19	1.38	0	0
March 21	0.24	1.34	0	0
<b>E23 - 36026 Village Knoll</b>				
March 7	0.15	1.90	0	0
March 21	0.10	1.87	0	0
<b>W01 - 35041 Harris Road</b>				
March 7	<0.10	1.86	0	0
March 14	0.18	2.03	0	0
March 21	0.19	1.76	0	0
March 28	0.27	1.65	0	0
<b>W02 - 3836 Old Clayburn Road</b>				
March 7	<0.10	2.05	0	0
March 14	0.16	2.17	0	0
March 21	0.21	1.90	0	0
March 28	0.10	1.97	0	0
<b>W03 - 35944 McKee Road</b>				
March 7	0.10	1.83	0	0
March 14	0.09	2.18	0	0
March 21	0.34	1.98	0	0
March 28	0.13	1.82	0	0



# City of Abbotsford Water Distribution System

Recent Water Quality Results

Updated: 2023-05-19 13:40



	Turbidity	Total Chlorine	Total Coliforms (counts)	E.coli (counts)
Units	NTU	mg/L	CFU/100mL	CFU/100mL
<b>W04 - 34638 Bateman Road</b>				
March 7	<0.10	1.32	0	0
March 14	0.18	1.52	0	0
March 21	0.27	1.40	0	0
March 28	0.42	1.44	0	0
<b>W05 - 3315 Gladwin Road</b>				
March 14	0.25	1.87	0	0
March 28	0.24	1.78	0	0
<b>W06 - 32961 South Fraser Way</b>				
March 7	0.08	1.45	0	0
March 21	0.15	1.45	0	0
<b>W07 - 32111 Joyce Avenue</b>				
March 7	0.08	1.43	0	0
March 14	0.27	1.40	0	0
March 21	0.15	1.36	0	0
March 28	0.36	1.29	0	0
<b>W11 - 5030 Lefeuve Road</b>				
March 7	0.11	1.65	0	0
March 14	0.26	1.91	0	0
March 21	0.17	1.69	0	0
March 28	0.29	1.69	0	0
<b>W13 - 7942 Bradner Road</b>				
March 7	0.15	1.90	0	0
March 14	0.24	1.66	0	0
March 21	0.22	1.46	0	0
March 28	0.20	1.32	0	0
<b>W15 - 3154 Clearbrook Road</b>				
March 7	0.12	1.89	0	0
March 14	0.17	2.12	0	0
March 21	0.14	1.86	0	0
March 28	0.27	1.90	0	0
<b>W16 - 27875 Swensson Avenue</b>				
March 7	0.09	1.72	0	0
March 14	0.32	2.00	0	0
March 21	0.16	1.78	0	0
March 28	0.31	1.71	0	0

# City of Abbotsford Water Distribution System

Recent Water Quality Results

Updated: 2023-05-19 13:40



	Turbidity	Total Chlorine	Total Coliforms (counts)	E.coli (counts)
Units	NTU	mg/L	CFU/100mL	CFU/100mL
<b>W19 - 4945 Mt. Lehman Road</b>				
March 7	0.35	2.17	0	0
March 14	0.30	2.17	0	0
March 21	0.17	1.90	0	0
March 28	0.23	1.75	0	0
<b>W21 - 2059 Peardonville Road</b>				
March 7	0.10	1.40	0	0
March 14	0.49	1.44	0	0
March 21	0.36	1.34	0	0
March 28	0.40	1.24	1.0*	0
March 30	0.24	1.25		
<b>W23 - 3612 Blue Jay Street</b>				
March 7	0.16	1.96	0	0
March 14	0.40	2.03	0	0
March 21	0.14	1.88	0	0
March 28	0.61	1.89	0	0
<b>W34 - 926 Columbia Street</b>				
March 7	0.07	1.42	0	0
March 14	0.36	1.41	0	0
March 21	0.34	1.35	0	0
March 28	0.68	1.24	0	0
<b>Blank Cell = No Data Collected</b>				

# City of Abbotsford Water Distribution System

Recent Water Quality Results

Updated: 2023-05-19 13:40



Parameter	Description	Acceptable Range
<b>Turbidity</b>	Suspended matter that interferes with the clarity of the water. While not a health concern itself, turbidity is an indicator of possible contamination.	There are no regulations for distribution system turbidity; water system operators aim for less than 1.0 NTU.
<b>Total Chlorine</b>	Used to monitor the level of disinfectant used to inactivate microorganisms such as bacteria and viruses.	There are no regulations for distribution system total chlorine; system operators aim to maintain a detectable residual. As long as there are no total coliforms, lower values are not a concern. Higher values are not deemed a health concern unless they exceed the World Health Organization's recommended limit of 5ppm.
<b>Total Coliforms</b>	A group of bacteria that generally do not cause human disease, but their presence in water may indicate possible contamination.	The BC Drinking Water Act stipulates that no more than 10% of samples during a 30-day period may be positive for Total Coliforms and that no single sample may contain more than 10 counts.
<b>E. Coli</b>	A member of the Total Coliform group and its presence in water indicates contamination.	The BC Drinking Water Act stipulates that no E.Coli should be detected in drinking water.

**Note: Turbidity and Total Chlorine are measured with field instruments. Result trends are used as indicators of significant water quality changes; specific values are not necessarily accurate.**

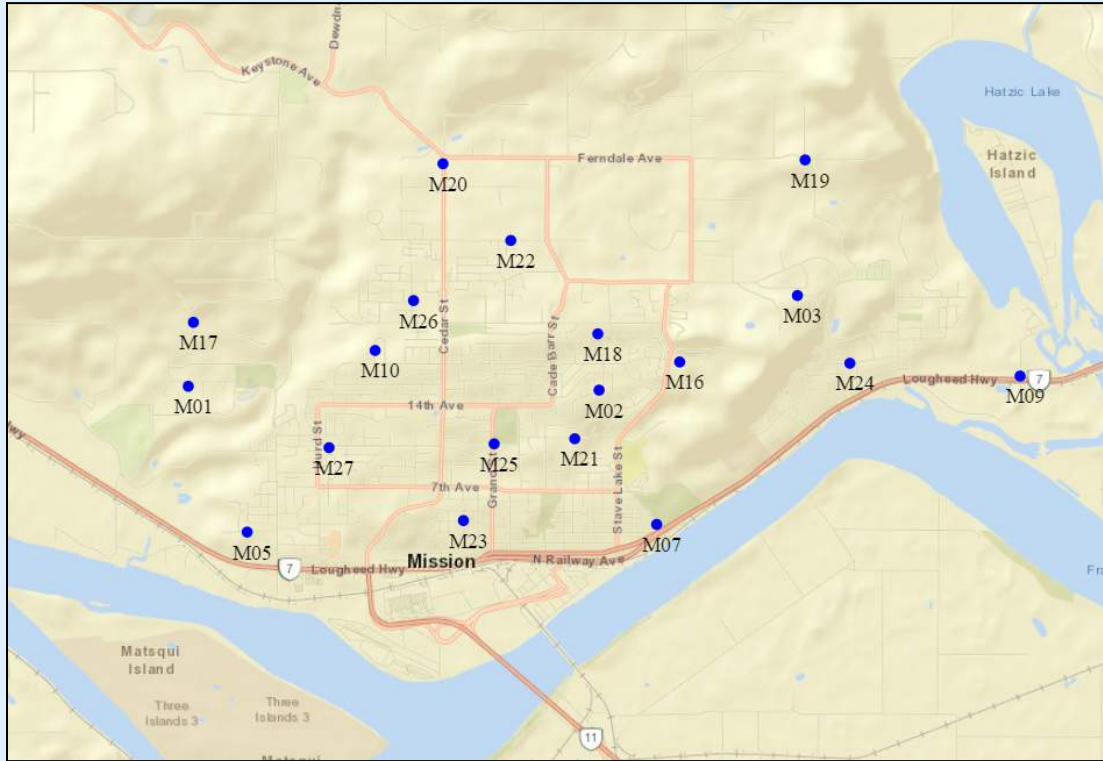
**\*Low TC count detected. FH is informed of all adverse results.**

# City of Mission Water Distribution System

Recent Water Quality Results

Updated: 2023-05-03 12:14

## Sample Locations



- Refer to following pages for results.
- Water quality parameter descriptions on last page.

Route A - M1, M16, M19, M21, M22, M23, M24, M26, M27

Route B - M2, M3, M4, M5, M7, M9, M17, M18, M20, M25

Each route is tested biweekly.

### Questions?

District of Mission Public Works

604-820-3769

# City of Mission Water Distribution System

Recent Water Quality Results

Updated: 2023-05-03 12:14



	Turbidity	Total Chlorine	Total Coliforms (counts)	E.coli (counts)
Units	NTU	mg/L	CFU/100mL	CFU/100mL
<b>M01 - Israel</b>				
March 14	0.11	1.98	0	0
March 28	0.14	1.92	0	0
<b>M02 - Balsam</b>				
March 7	0.30	1.90	0	0
March 21	0.27	2.13	0	0
<b>M03 - Penner</b>				
March 7	0.32	2.31	0	0
March 21	0.48	2.17	0	0
<b>M05 - Hillcrest</b>				
March 7	0.30	2.53	0	0
March 21	0.09	1.98	0	0
<b>M07 - 4th &amp; Mary</b>				
March 7	0.38	3.16	0	0
March 21	0.10	2.00	0	0
<b>M09 - Shook</b>				
March 7	0.34	3.15	0	0
March 14	0.06	2.11	0	0
March 21	0.16	2.13	0	0
March 28	0.13	2.09	0	0
<b>M10 - Miller</b>				
March 7	0.30	2.70	0	0
March 21	0.15	1.87	0	0
<b>M16 - Best @ Barker</b>				
March 14	0.24	2.26	0	0
March 28	0.33	1.99	0	0
<b>M17 - TH Booster</b>				
March 7	0.10	1.85	0	0
March 21	0.09	1.74	0	0
<b>M18 - Blueberry</b>				
March 7	0.27	3.01	0	0
March 21	0.29	2.35	0	0
<b>M19 - Ferndale @ Erikson</b>				
March 14	0.27	2.66	0	0
March 28	0.29	2.66	0	0

# City of Mission Water Distribution System

Recent Water Quality Results

Updated: 2023-05-03 12:14



	Turbidity	Total Chlorine	Total Coliforms (counts)	E.coli (counts)
Units	NTU	mg/L	CFU/100mL	CFU/100mL
<b>M20 - DTR &amp; Cedar</b>				
March 7	0.38	2.84	0	0
March 21	0.25	2.59	0	0
<b>M21 - 11th &amp; Dunsmuir</b>				
March 14	0.08	2.21	0	0
March 28	0.13	2.08	0	0
<b>M22 - Tunbridge @ DTR</b>				
March 14	0.26	2.68	0	0
March 28	0.29	2.59	0	0
<b>M23 - 4th @ Alder</b>				
March 14	0.09	2.15	0	0
March 28	0.10	2.06	0	0
<b>M24 - Moffat</b>				
March 14	<0.10	2.15	0	0
March 28	0.11	2.03	4.0*	0
March 31			0	0
<b>M25 - 11th &amp; Grand</b>				
March 7	0.28	3.05	0	0
March 21	0.14	2.01	0	0
<b>M26 - Fennel</b>				
March 14	0.30	2.66	0	0
March 28	0.51	2.53	0	0
<b>M27 - McRae &amp; Hurd</b>				
March 14	0.09	2.18	0	0
March 28	0.12	2.01	0	0
<b>Blank Cell = No Data Collected</b>				

# City of Mission Water Distribution System

Recent Water Quality Results

Updated: 2023-05-03 12:14



Parameter	Description	Acceptable Range
<b>Turbidity</b>	Suspended matter that interferes with the clarity of the water. While not a health concern itself, turbidity is an indicator of possible contamination.	There are no regulations for distribution system turbidity; water system operators aim for less than 1.0 NTU.
<b>Total Chlorine</b>	Used to monitor the level of disinfectant used to inactivate microorganisms such as bacteria and viruses.	There are no regulations for distribution system total chlorine; system operators aim to maintain a detectable residual. As long as there are no total coliforms, lower values are not a concern. Higher values are not deemed a health concern unless they exceed the World Health Organization's recommended limit of 5ppm.
<b>Total Coliforms</b>	A group of bacteria that generally do not cause human disease, but their presence in water may indicate possible contamination.	The BC Drinking Water Act stipulates that no more than 10% of samples during a 30-day period may be positive for Total Coliforms and that no single sample may contain more than 10 counts.
<b>E. Coli</b>	A member of the Total Coliform group and its presence in water indicates contamination.	The BC Drinking Water Act stipulates that no E.Coli should be detected in drinking water.

**Note: Turbidity and Total Chlorine are measured with field instruments. Result trends are used as indicators of significant water quality changes; specific values are not necessarily accurate.**

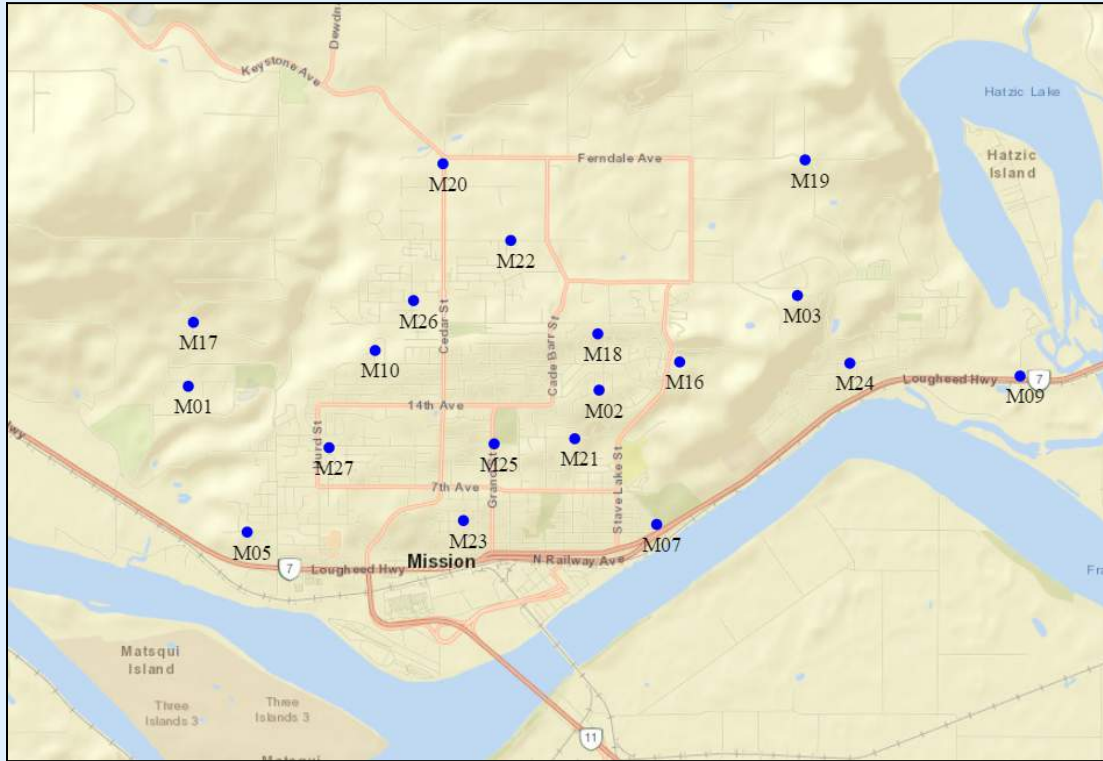
**\*Low TC count detected. FH is informed of all adverse results.**

# City of Mission Water Distribution System

Recent Water Quality Results

Updated: 2023-05-05 14:05

## Sample Locations



- Refer to following pages for results.
- Water quality parameter descriptions on last page.

Route A - M1, M16, M19, M21, M22, M23, M24, M26, M27

Route B - M2, M3, M4, M5, M7, M9, M17, M18, M20, M25

Each route is tested biweekly.

### Questions?

District of Mission Public Works

604-820-3769



# City of Mission Water Distribution System

Recent Water Quality Results

Updated: 2023-05-05 14:05



	Turbidity	Total Chlorine	Total Coliforms (counts)	E.coli (counts)
Units	NTU	mg/L	CFU/100mL	CFU/100mL
<b>M01 - Israel</b>				
April 12	0.28	2.45	0	0
April 25	0.16	2.03	0	0
<b>M02 - Balsam</b>				
April 4	0.28	1.77	0	0
April 18	0.25	1.62	0	0
<b>M03 - Penner</b>				
April 4	0.29	2.15	0	0
April 18	0.26	2.10	0	0
<b>M05 - Hillcrest</b>				
April 4	0.11	1.88	0	0
April 18	0.11	1.86	0	0
<b>M07 - 4th &amp; Mary</b>				
April 4	0.08	2.03	0	0
April 18	0.08	1.89	0	0
<b>M09 - Shook</b>				
April 4	0.06	2.06	0	0
April 12	0.10	1.88	0	0
April 18	0.08	1.90	0	0
April 25	0.08	2.16	0	0
<b>M10 - Miller</b>				
April 4	0.10	1.94	0	0
April 18	0.07	1.94	0	0
<b>M16 - Best @ Barker</b>				
April 12	0.29	1.67	0	0
April 25	0.29	1.76	0	0
<b>M17 - TH Booster</b>				
April 4	0.17	1.79	0	0
April 18	0.12	1.72	0	0
<b>M18 - Blueberry</b>				
April 4	0.27	2.54	0	0
April 18	0.45	2.26	0	0
<b>M19 - Ferndale @ Erikson</b>				
April 12	0.27	2.53	0	0
April 25	0.28	1.85	0	0

# City of Mission Water Distribution System

Recent Water Quality Results

Updated: 2023-05-05 14:05



	Turbidity	Total Chlorine	Total Coliforms (counts)	E.coli (counts)
Units	NTU	mg/L	CFU/100mL	CFU/100mL
<b>M20 - DTR &amp; Cedar</b>				
April 4	0.36	2.60	0	0
April 18	0.27	2.34	0	0
<b>M21 - 11th &amp; Dunsmuir</b>				
April 12	0.09	1.87	0	0
April 25	0.11	2.18	0	0
<b>M22 - Tunbridge @ DTR</b>				
April 12	0.37	2.46	0	0
April 25	0.28	2.19	0	0
<b>M23 - 4th @ Alder</b>				
April 12	0.08	1.81	0	0
April 25	0.15	2.12	0	0
<b>M24 - Moffat</b>				
April 12	0.09	1.83	1.0*	0
April 15			0	0
April 25	0.09	2.04	0	0
<b>M25 - 11th &amp; Grand</b>				
April 4	0.07	2.01	0	0
April 18	0.16	1.83	0	0
<b>M26 - Fennel</b>				
April 12	0.40	2.44	0	0
April 25	0.28	2.10	0	0
<b>M27 - McRae &amp; Hurd</b>				
April 12	0.09	1.79	0	0
April 25	0.08	2.14	0	0
<b>Blank Cell = No Data Collected</b>				

# City of Mission Water Distribution System

Recent Water Quality Results

Updated: 2023-05-05 14:05



Parameter	Description	Acceptable Range
<b>Turbidity</b>	Suspended matter that interferes with the clarity of the water. While not a health concern itself, turbidity is an indicator of possible contamination.	There are no regulations for distribution system turbidity; water system operators aim for less than 1.0 NTU.
<b>Total Chlorine</b>	Used to monitor the level of disinfectant used to inactivate microorganisms such as bacteria and viruses.	There are no regulations for distribution system total chlorine; system operators aim to maintain a detectable residual. As long as there are no total coliforms, lower values are not a concern. Higher values are not deemed a health concern unless they exceed the World Health Organization's recommended limit of 5ppm.
<b>Total Coliforms</b>	A group of bacteria that generally do not cause human disease, but their presence in water may indicate possible contamination.	The BC Drinking Water Act stipulates that no more than 10% of samples during a 30-day period may be positive for Total Coliforms and that no single sample may contain more than 10 counts.
<b>E. Coli</b>	A member of the Total Coliform group and its presence in water indicates contamination.	The BC Drinking Water Act stipulates that no E.Coli should be detected in drinking water.

**Note: Turbidity and Total Chlorine are measured with field instruments. Result trends are used as indicators of significant water quality changes; specific values are not necessarily accurate.**

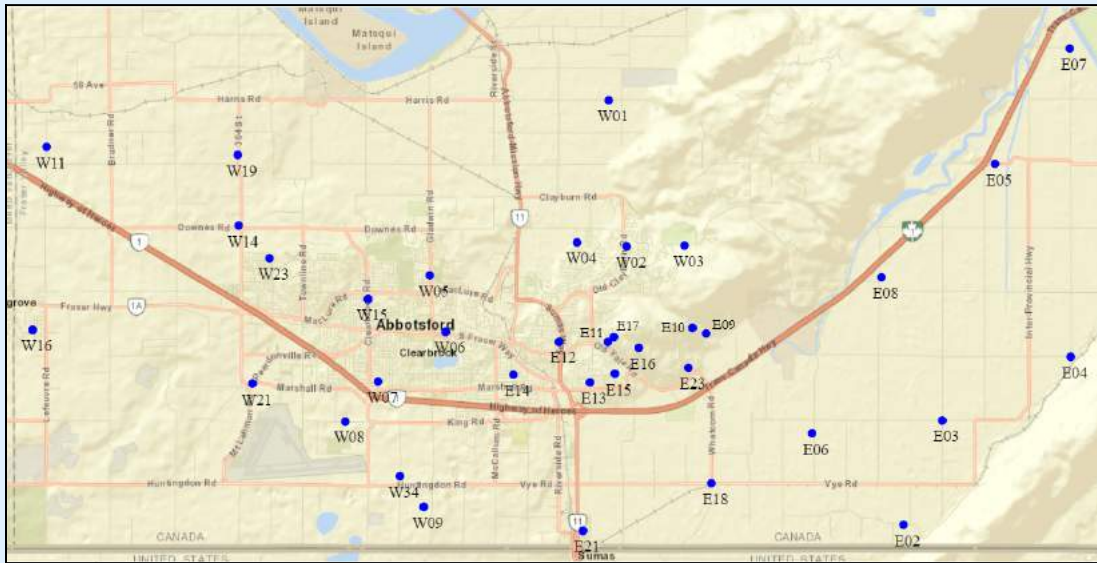
**\*Low TC count detected. FH is informed of all adverse results.**

# City of Abbotsford Water Distribution System

Recent Water Quality Results

Updated: 2023-05-05 11:28

## Sample Locations



- Refer to following pages for results.
- Water quality parameter descriptions on last page.

### Week A

Southeast Route - E02, E07, E09, E10, E11, E12, E13, E14, E17, E18, W02, W03

Northwest Route - W01, W04, W05, W07, W11, W13, W15, W16, W19, W21, W23, W34

### Week B

Southeast Route - E07, E08, E09, E12, E13, E15, E16, E18, E21, E23, W02, W03

Northwest Route - W01, W04, W06, W07, W11, W13, W15, W16, W19, W21, W23, W34

Each week is tested biweekly.

### Questions?

City of Abbotsford Engineering

604-864-5511

[eng-info@abbotsford.ca](mailto:eng-info@abbotsford.ca)

# City of Abbotsford Water Distribution System

Recent Water Quality Results

Updated: 2023-05-05 11:28



	Turbidity	Total Chlorine	Total Coliforms (counts)	E.coli (counts)
Units	NTU	mg/L	CFU/100mL	CFU/100mL
<b>E02 - 310 Arnold Road</b>				
April 12	0.14	0.99	0	0
April 25	0.24	1.61	0	0
<b>E07 - 6230 Tolmie Road</b>				
April 4	0.21	1.24	0	0
April 12	0.17	0.99	0	0
April 18	0.16	0.90	0	0
April 25	0.21	1.19	0	0
<b>E08 - 3434 McDermott Road</b>				
April 4	0.25	1.20	0	0
April 18	0.15	0.98	0	0
<b>E09 - 36232 Lower Sumas Mountain Road</b>				
April 4	0.24	1.88	0	0
April 12	0.22	1.25	0	0
April 18	0.16	1.69	0	0
April 25	0.13	2.01	0	0
<b>E10 - 36101 Regal Parkway</b>				
April 12	0.25	1.14	0	0
April 25	0.08	2.05	0	0
<b>E11 - 2598 St. Moritz Way</b>				
April 12	0.21	1.41	0	0
April 25	0.10	1.74	0	0
<b>E12 - 2691 Beck Road</b>				
April 4	0.31	1.91	0	0
April 12	0.21	1.81	0	0
April 18	0.12	1.82	0	0
April 25	0.19	1.89	0	0
<b>E13 - 2087 McMillan Road</b>				
April 4	0.11	1.91	0	0
April 12	0.24	0.75	0	0
April 18	0.10	1.66	0	0
April 25	0.08	1.93	0	0
<b>E14 - 2211 Mouldstade Road</b>				
April 12	0.28	1.36	0	0
April 25	0.09	1.72	0	0

# City of Abbotsford Water Distribution System

Recent Water Quality Results

Updated: 2023-05-05 11:28



	Turbidity	Total Chlorine	Total Coliforms (counts)	E.coli (counts)
Units	NTU	mg/L	CFU/100mL	CFU/100mL
<b>E15 - 2215 Orchard Drive</b>				
April 4	0.14	1.56	0	0
April 18	0.15	1.85	0	0
<b>E16 - 2540 Eagle Mountain Drive</b>				
April 4	0.11	1.78	0	0
April 18	0.13	1.31	0	0
<b>E17 - 2720 St. Moritz Way</b>				
April 12	0.19	1.07	0	0
April 25	0.07	1.69	0	0
<b>E18 - 36321 Vye Road</b>				
April 4	0.26	1.59	0	0
April 12	0.16	1.83	0	0
April 18	0.15	1.53	0	0
April 25	0.27	1.69	0	0
<b>E21 - 34694 5th Avenue</b>				
April 4	0.28	1.28	0	0
April 18	0.14	1.26	0	0
<b>E23 - 36026 Village Knoll</b>				
April 4	0.32	1.80	0	0
April 18	0.10	1.64	0	0
<b>W01 - 35041 Harris Road</b>				
April 4	0.20	1.64	0	0
April 12	0.24	1.35	0	0
April 18	0.27	1.39	0	0
April 25	0.13	1.89	0	0
<b>W02 - 3836 Old Clayburn Road</b>				
April 4	0.30	1.88	0	0
April 12	0.22	1.60	0	0
April 18	0.12	1.79	0	0
April 25	0.10	1.90	0	0
<b>W03 - 35944 McKee Road</b>				
April 4	0.15	1.79	0	0
April 12	0.23	1.30	0	0
April 18	0.09	1.56	0	0
April 25	0.20	1.85	0	0

# City of Abbotsford Water Distribution System

Recent Water Quality Results

Updated: 2023-05-05 11:28



	Turbidity	Total Chlorine	Total Coliforms (counts)	E.coli (counts)
Units	NTU	mg/L	CFU/100mL	CFU/100mL
<b>W04 - 34638 Bateman Road</b>				
April 4	0.15	1.31	0	0
April 12	0.21	1.13	0	0
April 18	0.24	1.36	0	0
April 25	0.13	1.93	0	0
<b>W05 - 3315 Gladwin Road</b>				
April 12	0.16	1.37	0	0
April 25	0.19	2.03	0	0
<b>W06 - 32961 South Fraser Way</b>				
April 4	0.13	1.41	0	0
April 18	0.21	1.32	0	0
<b>W07 - 32111 Joyce Avenue</b>				
April 4	0.27	1.37	0	0
April 12	0.20	1.39	0	0
April 18	0.11	1.33	0	0
April 25	0.13	1.46	0	0
<b>W11 - 5030 Lefeuve Road</b>				
April 4	0.12	1.56	0	0
April 12	0.39	2.01	0	0
April 18	0.26	1.39	0	0
April 25	0.13	1.78	0	0
<b>W13 - 7942 Bradner Road</b>				
April 4	0.18	1.41	0	0
April 12	0.39	1.17	0	0
April 18	0.28	1.54	0	0
April 25	0.40	1.28	0	0
<b>W15 - 3154 Clearbrook Road</b>				
April 4	0.15	1.89	0	0
April 12	0.25	1.72	0	0
April 18	0.24	1.82	0	0
April 25	0.17	2.04	0	0
<b>W16 - 27875 Swensson Avenue</b>				
April 4	0.13	1.68	0	0
April 12	0.33	1.24	0	0
April 18	0.08	1.52	0	0
April 25	0.25	2.03	0	0

# City of Abbotsford Water Distribution System

Recent Water Quality Results

Updated: 2023-05-05 11:28



	Turbidity	Total Chlorine	Total Coliforms (counts)	E.coli (counts)
Units	NTU	mg/L	CFU/100mL	CFU/100mL
<b>W19 - 4945 Mt. Lehman Road</b>				
April 4	0.30	1.87	0	0
April 12	0.29	1.77	0	0
April 18	0.19	1.73	0	0
April 25	0.24	2.05	0	0
<b>W21 - 2059 Peardonville Road</b>				
April 4	0.33	1.19	0	0
April 12	0.23	1.24	0	0
April 18	0.12	1.36	0	0
April 25	0.13	1.30	0	0
<b>W23 - 3612 Blue Jay Street</b>				
April 4	0.26	1.83	0	0
April 12	0.40	2.38	0	0
April 18	0.11	1.81	0	0
April 25	0.23	2.04	0	0
<b>W34 - 926 Columbia Street</b>				
April 4	0.19	1.35	0	0
April 12	0.27	1.35	0	0
April 18	0.14	1.32	0	0
April 25	0.17	1.24	0	0
<b>Blank Cell = No Data Collected</b>				



# City of Abbotsford Water Distribution System

Recent Water Quality Results

Updated: 2023-05-05 11:28



Parameter	Description	Acceptable Range
<b>Turbidity</b>	Suspended matter that interferes with the clarity of the water. While not a health concern itself, turbidity is an indicator of possible contamination.	There are no regulations for distribution system turbidity; water system operators aim for less than 1.0 NTU.
<b>Total Chlorine</b>	Used to monitor the level of disinfectant used to inactivate microorganisms such as bacteria and viruses.	There are no regulations for distribution system total chlorine; system operators aim to maintain a detectable residual. As long as there are no total coliforms, lower values are not a concern. Higher values are not deemed a health concern unless they exceed the World Health Organization's recommended limit of 5ppm.
<b>Total Coliforms</b>	A group of bacteria that generally do not cause human disease, but their presence in water may indicate possible contamination.	The BC Drinking Water Act stipulates that no more than 10% of samples during a 30-day period may be positive for Total Coliforms and that no single sample may contain more than 10 counts.
<b>E. Coli</b>	A member of the Total Coliform group and its presence in water indicates contamination.	The BC Drinking Water Act stipulates that no E.Coli should be detected in drinking water.

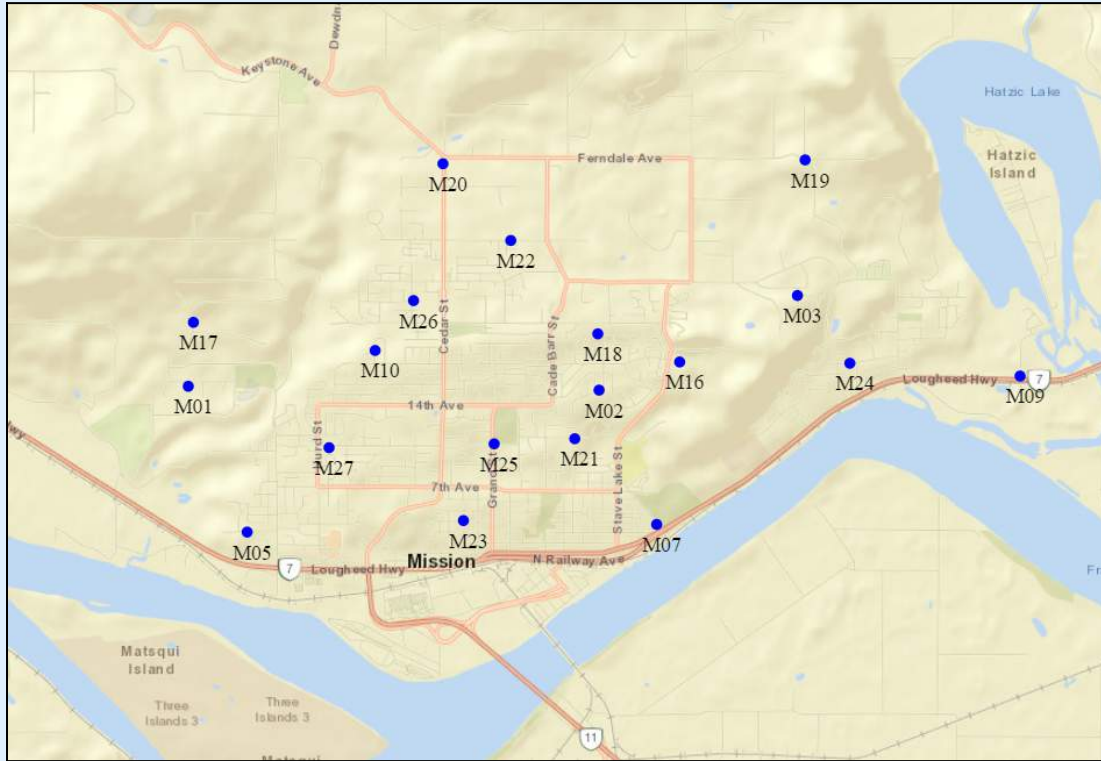
**Note: Turbidity and Total Chlorine are measured with field instruments. Result trends are used as indicators of significant water quality changes; specific values are not necessarily accurate.**

# City of Mission Water Distribution System

Recent Water Quality Results

Updated: 2023-06-19 14:51

## Sample Locations



- Refer to following pages for results.
- Water quality parameter descriptions on last page.

Route A - M1, M16, M19, M21, M22, M23, M24, M26, M27

Route B - M2, M3, M4, M5, M7, M9, M17, M18, M20, M25

Each route is tested biweekly.

### Questions?

District of Mission Public Works

604-820-3769

# City of Mission Water Distribution System

Recent Water Quality Results

Updated: 2023-06-19 14:51



	Turbidity	Total Chlorine	Total Coliforms (counts)	E.coli (counts)
Units	NTU	mg/L	CFU/100mL	CFU/100mL
<b>M01 - Israel</b>				
May 9	0.25	2.17	0	0
May 24	0.24	1.48	0	0
<b>M02 - Balsam</b>				
May 2	0.29	2.30	0	0
May 16	0.27	2.47	0	0
May 30	0.30	2.18	0	0
<b>M03 - Penner</b>				
May 2	0.33	2.26	0	0
May 16	0.18	2.45	0	0
May 30	0.35	2.28	0	0
<b>M05 - Hillcrest</b>				
May 2	0.11	0.82	0	0
May 16	0.10	1.53	0	0
May 30	0.11	1.50	0	0
<b>M07 - 4th &amp; Mary</b>				
May 2	0.18	1.88	0	0
May 16	0.18	1.73	0	0
May 30	0.18	1.90	0	0
<b>M09 - Shook</b>				
May 2	0.23	1.88	0	0
May 9	0.19	2.07	0	0
May 16	0.30	1.77	0	0
May 24	0.13	2.15	0	0
May 30	0.14	1.85	0	0
<b>M10 - Miller</b>				
May 2	0.38	2.19	0	0
May 16	0.35	2.34	0	0
May 30	0.40	2.08	0	0
<b>M16 - Best @ Barker</b>				
May 9	0.30	2.31	0	0
May 24	0.35	2.47	0	0
<b>M17 - TH Booster</b>				
May 2	0.13	0.42	0	0
May 16	0.18	1.65	0	0
May 30	0.20	1.96	0	0

# City of Mission Water Distribution System

Recent Water Quality Results

Updated: 2023-06-19 14:51



	Turbidity	Total Chlorine	Total Coliforms (counts)	E.coli (counts)
Units	NTU	mg/L	CFU/100mL	CFU/100mL
<b>M18 - Blueberry</b>				
May 2	0.27	2.39	0	0
May 16	0.28	2.57	0	0
May 30	0.28	2.28	0	0
<b>M19 - Ferndale @ Erikson</b>				
May 9	0.46	1.94	0	0
May 24	0.28	2.35	0	0
<b>M20 - DTR &amp; Cedar</b>				
May 2	0.28	2.45	0	0
May 16	0.65	2.66	0	0
May 30	0.36	2.42	0	0
<b>M21 - 11th &amp; Dunsmuir</b>				
May 9	0.27	1.99	0	0
May 24	0.29	2.03	0	0
<b>M22 - Tunbridge @ DTR</b>				
May 9	0.81	2.40	0	0
May 24	0.27	2.35	0	0
<b>M23 - 4th @ Alder</b>				
May 9	0.23	2.02	0	0
May 24	0.16	1.99	0	0
<b>M24 - Moffat</b>				
May 9	0.26	2.00	0	0
May 24	0.14	2.00	0	0
<b>M25 - 11th &amp; Grand</b>				
May 2	0.10	1.79	0	0
May 16	0.12	1.56	0	0
May 30	0.15	1.76	0	0
<b>M26 - Fennel</b>				
May 9	0.33	2.25	0	0
May 24	0.26	2.32	0	0
<b>M27 - McRae &amp; Hurd</b>				
May 9	0.22	2.00	0	0
May 24	0.15	1.94	0	0
<b>Blank Cell = No Data Collected</b>				

# City of Mission Water Distribution System

Recent Water Quality Results

Updated: 2023-06-19 14:51



Parameter	Description	Acceptable Range
<b>Turbidity</b>	Suspended matter that interferes with the clarity of the water. While not a health concern itself, turbidity is an indicator of possible contamination.	There are no regulations for distribution system turbidity; water system operators aim for less than 1.0 NTU.
<b>Total Chlorine</b>	Used to monitor the level of disinfectant used to inactivate microorganisms such as bacteria and viruses.	There are no regulations for distribution system total chlorine; system operators aim to maintain a detectable residual. As long as there are no total coliforms, lower values are not a concern. Higher values are not deemed a health concern unless they exceed the World Health Organization's recommended limit of 5ppm.
<b>Total Coliforms</b>	A group of bacteria that generally do not cause human disease, but their presence in water may indicate possible contamination.	The BC Drinking Water Act stipulates that no more than 10% of samples during a 30-day period may be positive for Total Coliforms and that no single sample may contain more than 10 counts.
<b>E. Coli</b>	A member of the Total Coliform group and its presence in water indicates contamination.	The BC Drinking Water Act stipulates that no E.Coli should be detected in drinking water.

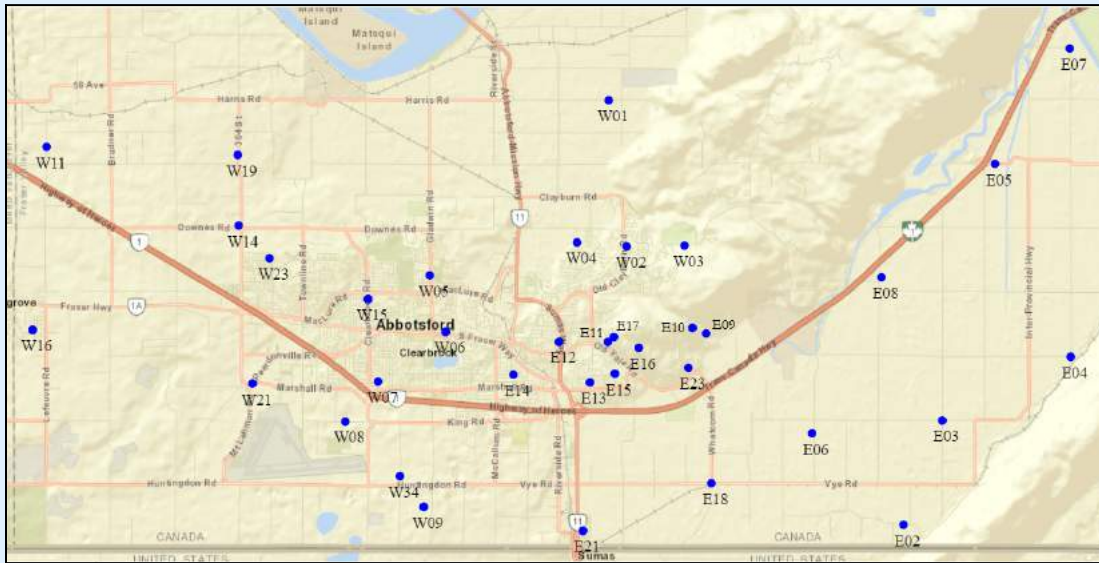
**Note: Turbidity and Total Chlorine are measured with field instruments. Result trends are used as indicators of significant water quality changes; specific values are not necessarily accurate.**

# City of Abbotsford Water Distribution System

Recent Water Quality Results

Updated: 2023-06-19 15:29

## Sample Locations



- Refer to following pages for results.
- Water quality parameter descriptions on last page.

### Week A

Southeast Route - E02, E07, E09, E10, E11, E12, E13, E14, E17, E18, W02, W03

Northwest Route - W01, W04, W05, W07, W11, W13, W15, W16, W19, W21, W23, W34

### Week B

Southeast Route - E07, E08, E09, E12, E13, E15, E16, E18, E21, E23, W02, W03

Northwest Route - W01, W04, W06, W07, W11, W13, W15, W16, W19, W21, W23, W34

Each week is tested biweekly.

### Questions?

City of Abbotsford Engineering

604-864-5511

[eng-info@abbotsford.ca](mailto:eng-info@abbotsford.ca)

# City of Abbotsford Water Distribution System

Recent Water Quality Results

Updated: 2023-06-19 15:29



	Turbidity	Total Chlorine	Total Coliforms (counts)	E.coli (counts)
Units	NTU	mg/L	CFU/100mL	CFU/100mL
<b>E02 - 310 Arnold Road</b>				
May 9	0.31	1.37	0	0
May 24	0.32	1.17	0	0
<b>E07 - 6230 Tolmie Road</b>				
May 2	0.10	1.10	0	0
May 9	0.49	1.01	0	0
May 16	0.12	1.04	0	0
May 24	0.34	0.90	0	0
May 30	0.12	0.91	0	0
<b>E08 - 3434 McDermott Road</b>				
May 2	0.12	0.95	0	0
May 16	0.14	1.32	0	0
May 30	0.18	0.89	0	0
<b>E09 - 36232 Lower Sumas Mountain Road</b>				
May 2	0.10	0.55	0	0
May 9	0.27	1.55	0	0
May 16	0.10	1.54	0	0
May 24	0.23	1.40	0	0
May 30	0.17	1.46	0	0
<b>E10 - 36101 Regal Parkway</b>				
May 9	0.42	1.60	0	0
May 24	0.18	1.70	0	0
<b>E11 - 2598 St. Moritz Way</b>				
May 9	0.27	1.45	0	0
May 24	0.15	1.64	0	0
<b>E12 - 2691 Beck Road</b>				
May 2	0.11	1.25	0	0
May 9	0.35	1.63	0	0
May 16	0.13	1.61	0	0
May 24	0.21	1.57	0	0
May 30	0.14	1.52	0	0
<b>E13 - 2087 McMillan Road</b>				
May 2	0.18	1.26	0	0
May 9	0.43	1.68	0	0
May 16	0.11	1.60	0	0
May 24	0.19	1.49	0	0

# City of Abbotsford Water Distribution System

Recent Water Quality Results

Updated: 2023-06-19 15:29



	Turbidity	Total Chlorine	Total Coliforms (counts)	E.coli (counts)
Units	NTU	mg/L	CFU/100mL	CFU/100mL
<b>E13 - 2087 McMillan Road</b>				
May 30	0.13	1.55	0	0
<b>E14 - 2211 Mouldstade Road</b>				
May 9	0.15	1.45	0	0
May 24	0.33	1.31	0	0
<b>E15 - 2215 Orchard Drive</b>				
May 2	0.20	0.86	0	0
May 16	0.11	1.54	0	0
May 30	0.24	1.46	0	0
<b>E16 - 2540 Eagle Mountain Drive</b>				
May 2	0.13	1.23	0	0
May 16	0.10	1.60	0	0
May 30	0.13	1.64	0	0
<b>E17 - 2720 St. Moritz Way</b>				
May 9	0.30	1.49	0	0
May 24	0.22	1.53	0	0
<b>E18 - 36321 Vye Road</b>				
May 2	0.13	0.14	0	0
May 9	0.32	1.51	0	0
May 16	0.13	1.42	0	0
May 24	0.53	1.23	0	0
May 30	0.29	1.35	0	0
<b>E21 - 34694 5th Avenue</b>				
May 2	0.14	1.22	0	0
May 16	0.16	1.47	0	0
May 30	0.11	1.25	0	0
<b>E23 - 36026 Village Knoll</b>				
May 2	0.24	1.23	0	0
May 16	0.10	1.59	0	0
May 30	0.20	1.58	0	0
<b>W01 - 35041 Harris Road</b>				
May 2	0.31	0.46	0	0
May 9	0.17	1.60	1.0*	0
May 11	0.10	1.31	0	0
May 12	0.10	1.78	0	0
May 16	0.19	1.38	0	0



# City of Abbotsford Water Distribution System

Recent Water Quality Results

Updated: 2023-06-19 15:29



	Turbidity	Total Chlorine	Total Coliforms (counts)	E.coli (counts)
Units	NTU	mg/L	CFU/100mL	CFU/100mL
<b>W01 - 35041 Harris Road</b>				
May 24	0.29	1.67	0	0
May 30	0.17	1.28	0	0
<b>W02 - 3836 Old Clayburn Road</b>				
May 2	0.11	1.34	0	0
May 9	0.22	1.74	0	0
May 16	0.10	1.59	0	0
May 24	0.17	1.72	0	0
May 30	0.28	1.75	0	0
<b>W03 - 35944 McKee Road</b>				
May 2	0.12	1.35	0	0
May 9	0.30	1.48	0	0
May 16	0.10	1.57	0	0
May 24	0.12	1.75	0	0
May 30	0.12	1.77	0	0
<b>W04 - 34638 Bateman Road</b>				
May 2	0.15	1.22	0	0
May 9	0.10	1.33	0	0
May 16	0.21	1.50	0	0
May 24	0.28	1.30	0	0
May 30	0.12	1.41	0	0
<b>W05 - 3315 Gladwin Road</b>				
May 9	0.10	1.51	0	0
May 24	0.16	1.64	0	0
<b>W06 - 32961 South Fraser Way</b>				
May 2	0.43	1.34	0	0
May 16	0.18	1.55	0	0
May 30	0.16	1.51	0	0
<b>W07 - 32111 Joyce Avenue</b>				
May 2	0.19	1.32	0	0
May 9	0.18	1.49	0	0
May 16	0.28	1.51	0	0
May 24	0.34	1.33	0	0
May 30	0.12	1.43	0	0
<b>W11 - 5030 Lefeuve Road</b>				
May 2	0.44	0.34	0	0

# City of Abbotsford Water Distribution System

Recent Water Quality Results

Updated: 2023-06-19 15:29



	Turbidity	Total Chlorine	Total Coliforms (counts)	E.coli (counts)
Units	NTU	mg/L	CFU/100mL	CFU/100mL
<b>W11 - 5030 Lefevre Road</b>				
May 9	0.27	1.22	0	0
May 16	0.39	1.54	0	0
May 24	0.25	1.35	0	0
May 30	0.13	1.51	0	0
<b>W13 - 7942 Bradner Road</b>				
May 2	0.35	1.24	0	0
May 9	0.20	1.18	0	0
May 16	0.38	1.19	0	0
May 24	0.35	0.97	0	0
May 30	0.19	1.37	0	0
<b>W15 - 3154 Clearbrook Road</b>				
May 2	0.26	0.65	0	0
May 9	0.18	1.61	0	0
May 16	0.34	1.59	0	0
May 24	0.24	1.69	0	0
May 30	0.16	1.65	0	0
<b>W16 - 27875 Swensson Avenue</b>				
May 2	0.26	1.44	0	0
May 9	0.13	1.28	0	0
May 16	0.28	1.48	0	0
May 24	0.15	1.38	0	0
May 30	0.12	1.37	0	0
<b>W19 - 4945 Mt. Lehman Road</b>				
May 2	0.28	1.55	0	0
May 9	0.22	1.77	0	0
May 16	0.33	1.52	0	0
May 24	0.19	1.78	0	0
May 30	0.14	1.37	0	0
<b>W21 - 2059 Peardonville Road</b>				
May 2	0.43	1.47	0	0
May 9	0.21	1.31	0	0
May 16	0.16	1.37	0	0
May 24	0.36	1.32	0	0
May 30	0.17	1.27	0	0
<b>W23 - 3612 Blue Jay Street</b>				
May 2	0.18	0.92	0	0

# City of Abbotsford Water Distribution System

Recent Water Quality Results

Updated: 2023-06-19 15:29



	Turbidity	Total Chlorine	Total Coliforms (counts)	E.coli (counts)
Units	NTU	mg/L	CFU/100mL	CFU/100mL
<b>W23 - 3612 Blue Jay Street</b>				
May 9	0.22	1.57	0	0
May 16	0.33	1.62	0	0
May 24	0.34	1.60	0	0
May 30	0.27	1.50	0	0
<b>W34 - 926 Columbia Street</b>				
May 2	0.44	1.41	0	0
May 9	0.20	1.44	0	0
May 16	0.25	1.57	0	0
May 24	0.26	1.19	0	0
May 30	0.18	1.23	0	0
<b>Blank Cell = No Data Collected</b>				

# City of Abbotsford Water Distribution System

Recent Water Quality Results

Updated: 2023-06-19 15:29



Parameter	Description	Acceptable Range
<b>Turbidity</b>	Suspended matter that interferes with the clarity of the water. While not a health concern itself, turbidity is an indicator of possible contamination.	There are no regulations for distribution system turbidity; water system operators aim for less than 1.0 NTU.
<b>Total Chlorine</b>	Used to monitor the level of disinfectant used to inactivate microorganisms such as bacteria and viruses.	There are no regulations for distribution system total chlorine; system operators aim to maintain a detectable residual. As long as there are no total coliforms, lower values are not a concern. Higher values are not deemed a health concern unless they exceed the World Health Organization's recommended limit of 5ppm.
<b>Total Coliforms</b>	A group of bacteria that generally do not cause human disease, but their presence in water may indicate possible contamination.	The BC Drinking Water Act stipulates that no more than 10% of samples during a 30-day period may be positive for Total Coliforms and that no single sample may contain more than 10 counts.
<b>E. Coli</b>	A member of the Total Coliform group and its presence in water indicates contamination.	The BC Drinking Water Act stipulates that no E.Coli should be detected in drinking water.

**Note: Turbidity and Total Chlorine are measured with field instruments. Result trends are used as indicators of significant water quality changes; specific values are not necessarily accurate.**

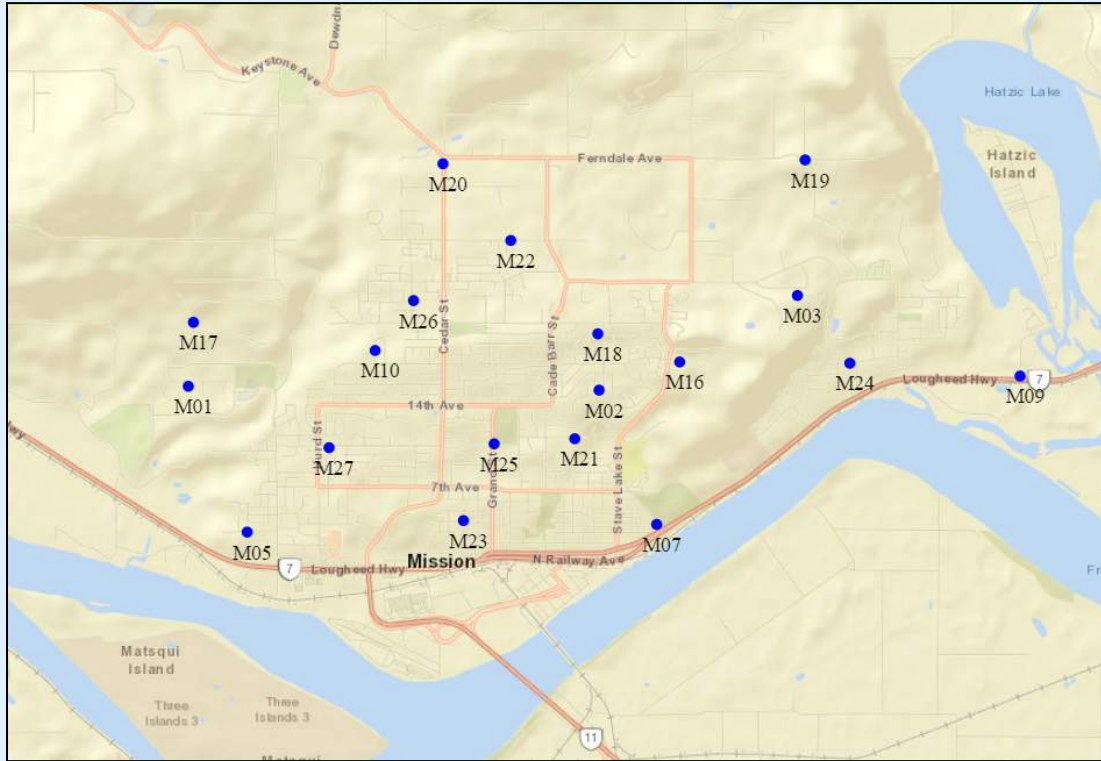
**\*Low TC Count detected. FH is informed of all adverse results.**

# City of Mission Water Distribution System

Recent Water Quality Results

Updated: 2023-07-13 11:16

## Sample Locations



- Refer to following pages for results.
- Water quality parameter descriptions on last page.

Route A - M1, M16, M19, M21, M22, M23, M24, M26, M27

Route B - M2, M3, M4, M5, M7, M9, M17, M18, M20, M25

Each route is tested biweekly.

### Questions?

District of Mission Public Works

604-820-3769

# City of Mission Water Distribution System

Recent Water Quality Results

Updated: 2023-07-13 11:16



	Turbidity	Total Chlorine	Total Coliforms (counts)	E.coli (counts)
Units	NTU	mg/L	CFU/100mL	CFU/100mL
<b>M01 - Israel</b>				
June 6	0.58	2.12	0	0
June 20	0.12	1.79	0	0
<b>M02 - Balsam</b>				
June 13	0.28	2.03	0	0
June 27	0.29	2.20	0	0
<b>M03 - Penner</b>				
June 13	0.36	2.25	0	0
June 27	0.37	2.08	0	0
<b>M05 - Hillcrest</b>				
June 13	0.29	2.45	0	0
June 27	0.11	1.84	0	0
<b>M07 - 4th &amp; Mary</b>				
June 13	0.15	1.77	0	0
June 27	0.17	1.97	0	0
<b>M09 - Shook</b>				
June 6	0.15	1.92	0	0
June 13	0.07	1.87	0	0
June 20	0.32	2.03	0	0
June 27	<0.10	1.93	0	0
<b>M10 - Miller</b>				
June 13	0.28	1.86	0	0
June 27	0.27	2.00	0	0
<b>M16 - Best @ Barker</b>				
June 6	0.42	2.17	0	0
June 20	0.25	2.28	0	0
<b>M17 - TH Booster</b>				
June 13	0.40	2.46	0	0
June 27	<0.10	1.84	0	0
<b>M18 - Blueberry</b>				
June 13	0.34	2.46	0	0
June 27	0.29	2.24	0	0
<b>M19 - Ferndale @ Erikson</b>				
June 6	0.41	2.04	0	0
June 20	0.24	2.26	0	0

# City of Mission Water Distribution System

Recent Water Quality Results

Updated: 2023-07-13 11:16



	Turbidity	Total Chlorine	Total Coliforms (counts)	E.coli (counts)
Units	NTU	mg/L	CFU/100mL	CFU/100mL
<b>M20 - DTR &amp; Cedar</b>				
June 13	0.32	2.48	0	0
June 27	0.57	2.44	0	0
<b>M21 - 11th &amp; Dunsmuir</b>				
June 6	0.13	1.81	0	0
June 20	0.09	1.98	0	0
<b>M22 - Tunbridge @ DTR</b>				
June 6	0.57	2.40	0	0
June 20	0.31	2.08	0	0
<b>M23 - 4th @ Alder</b>				
June 6	0.65	2.47	0	0
June 20	0.11	1.91	0	0
<b>M24 - Moffat</b>				
June 6	0.17	1.86	0	0
June 20	0.10	2.02	0	0
<b>M25 - 11th &amp; Grand</b>				
June 13	0.12	1.85	0	0
June 27	0.19	1.77	0	0
<b>M26 - Fennel</b>				
June 6	0.65	2.36	0	0
June 20	0.31	2.44	0	0
<b>M27 - McRae &amp; Hurd</b>				
June 6	0.43	2.44	0	0
June 20	0.12	1.98	0	0
<b>Blank Cell = No Data Collected</b>				

# City of Mission Water Distribution System

Recent Water Quality Results

Updated: 2023-07-13 11:16



Parameter	Description	Acceptable Range
<b>Turbidity</b>	Suspended matter that interferes with the clarity of the water. While not a health concern itself, turbidity is an indicator of possible contamination.	There are no regulations for distribution system turbidity; water system operators aim for less than 1.0 NTU.
<b>Total Chlorine</b>	Used to monitor the level of disinfectant used to inactivate microorganisms such as bacteria and viruses.	There are no regulations for distribution system total chlorine; system operators aim to maintain a detectable residual. As long as there are no total coliforms, lower values are not a concern. Higher values are not deemed a health concern unless they exceed the World Health Organization's recommended limit of 5ppm.
<b>Total Coliforms</b>	A group of bacteria that generally do not cause human disease, but their presence in water may indicate possible contamination.	The BC Drinking Water Act stipulates that no more than 10% of samples during a 30-day period may be positive for Total Coliforms and that no single sample may contain more than 10 counts.
<b>E. Coli</b>	A member of the Total Coliform group and its presence in water indicates contamination.	The BC Drinking Water Act stipulates that no E.Coli should be detected in drinking water.

**Note: Turbidity and Total Chlorine are measured with field instruments. Result trends are used as indicators of significant water quality changes; specific values are not necessarily accurate.**

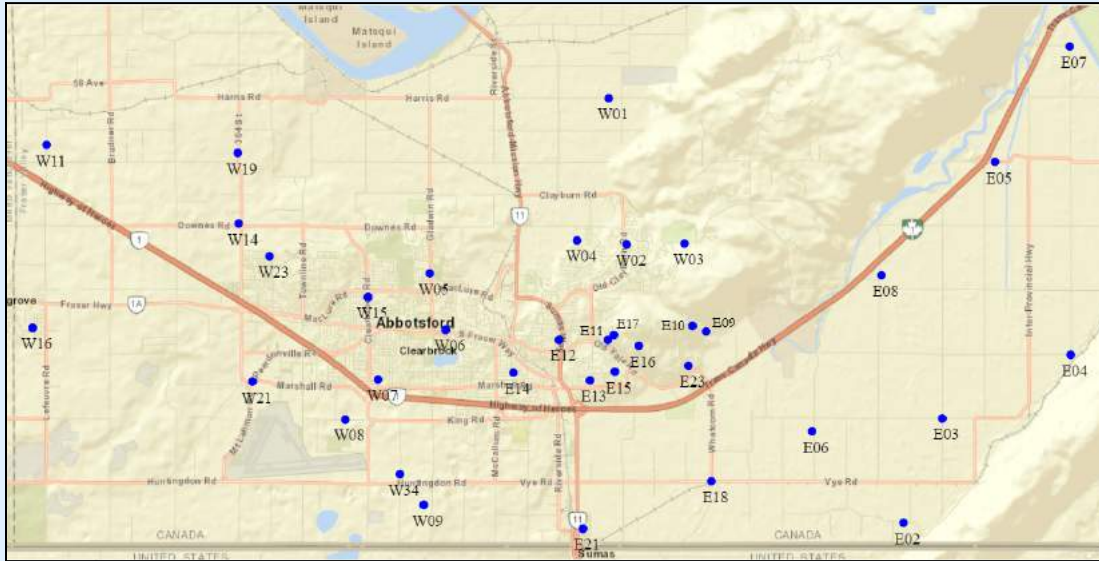


# City of Abbotsford Water Distribution System

Recent Water Quality Results

Updated: 2023-07-07 13:34

## Sample Locations



- Refer to following pages for results.
- Water quality parameter descriptions on last page.

### Week A

Southeast Route - E02, E07, E09, E10, E11, E12, E13, E14, E17, E18, W02, W03

Northwest Route - W01, W04, W05, W07, W11, W13, W15, W16, W19, W21, W23, W34

### Week B

Southeast Route - E07, E08, E09, E12, E13, E15, E16, E18, E21, E23, W02, W03

Northwest Route - W01, W04, W06, W07, W11, W13, W15, W16, W19, W21, W23, W34

Each week is tested biweekly.

### Questions?

City of Abbotsford Engineering

604-864-5511

[eng-info@abbotsford.ca](mailto:eng-info@abbotsford.ca)

# City of Abbotsford Water Distribution System

Recent Water Quality Results

Updated: 2023-07-07 13:34



	Turbidity	Total Chlorine	Total Coliforms (counts)	E.coli (counts)
Units	NTU	mg/L	CFU/100mL	CFU/100mL
<b>E02 - 310 Arnold Road</b>				
June 6	0.47	1.56	0	0
June 20	0.12	1.38	0	0
<b>E07 - 6230 Tolmie Road</b>				
June 6	0.44	0.94	0	0
June 13	0.14	0.92	0	0
June 20	0.13	0.96	0	0
June 27	0.24	1.01	0	0
<b>E08 - 3434 McDermott Road</b>				
June 13	0.63	1.42	0	0
June 27	0.35	1.67	0	0
<b>E09 - 36232 Lower Sumas Mountain Road</b>				
June 6	0.32	1.89	0	0
June 13	0.21	1.59	0	0
June 20	0.11	1.54	0	0
June 27	0.16	1.64	0	0
<b>E10 - 36101 Regal Parkway</b>				
June 6	<0.10		0	0
June 20	0.08	1.67	0	0
<b>E11 - 2598 St. Moritz Way</b>				
June 6	0.10	1.60	0	0
June 20	0.11	1.55	0	0
<b>E12 - 2691 Beck Road</b>				
June 6	0.18	1.61	0	0
June 13	0.17	1.62	0	0
June 20	0.13	1.67	0	0
June 27	0.13	1.83	0	0
<b>E13 - 2087 McMillan Road</b>				
June 6	0.21	1.75	0	0
June 13	0.21	1.56	0	0
June 20	0.21	1.62	0	0
June 27	0.22	1.58	0	0
<b>E14 - 2211 Mouldstade Road</b>				
June 6	0.12	1.48	0	0
June 20	0.11	1.43	0	0

# City of Abbotsford Water Distribution System

Recent Water Quality Results

Updated: 2023-07-07 13:34



	Turbidity	Total Chlorine	Total Coliforms (counts)	E.coli (counts)
Units	NTU	mg/L	CFU/100mL	CFU/100mL
<b>E15 - 2215 Orchard Drive</b>				
June 13	0.24	1.31	0	0
June 27	0.17	1.38	0	0
<b>E16 - 2540 Eagle Mountain Drive</b>				
June 13	0.22	1.68	0	0
June 27	0.23	1.64	0	0
<b>E17 - 2720 St. Moritz Way</b>				
June 6	0.33	1.46	0	0
June 20	0.10	1.57	0	0
<b>E18 - 36321 Vye Road</b>				
June 6	<0.10	1.47	0	0
June 13	0.19	1.41	0	0
June 20	0.11	1.36	0	0
June 27	0.19	0.80	0	0
<b>E21 - 34694 5th Avenue</b>				
June 13	0.36	1.27	0	0
June 27	0.75	1.48	0	0
<b>E23 - 36026 Village Knoll</b>				
June 13	0.23	1.53	0	0
June 27	0.24	1.50	0	0
<b>W01 - 35041 Harris Road</b>				
June 6	0.11	1.79	0	0
June 13	0.19	1.55	0	0
June 20	0.23	1.35	0	0
June 27	0.13	1.42	0	0
<b>W02 - 3836 Old Clayburn Road</b>				
June 6	0.19	1.70	0	0
June 13	0.22	1.63	0	0
June 20	0.20	1.72	0	0
June 27	0.16	1.80	0	0
<b>W03 - 35944 McKee Road</b>				
June 6	0.15	1.69	0	0
June 13	0.16	1.65	0	0
June 20	0.18	1.79	0	0
June 27	0.23	1.78	0	0

# City of Abbotsford Water Distribution System

Recent Water Quality Results

Updated: 2023-07-07 13:34



	Turbidity	Total Chlorine	Total Coliforms (counts)	E.coli (counts)
Units	NTU	mg/L	CFU/100mL	CFU/100mL
<b>W04 - 34638 Bateman Road</b>				
June 6	0.22	1.48	0	0
June 13	0.10	1.43	0	0
June 20	0.22	1.55	0	0
June 27	0.16	1.37	0	0
<b>W05 - 3315 Gladwin Road</b>				
June 6	0.30	1.69	0	0
June 20	0.19	1.69	0	0
<b>W06 - 32961 South Fraser Way</b>				
June 13	0.10	1.56	0	0
June 27	0.09	1.62	0	0
<b>W07 - 32111 Joyce Avenue</b>				
June 6	0.44	1.56	0	0
June 13	0.09	1.51	0	0
June 20	0.27	1.21	0	0
June 27	0.20	1.53	0	0
<b>W11 - 5030 Lefeuve Road</b>				
June 6	0.17	1.71	0	0
June 13	0.13	1.59	0	0
June 20	0.27	1.42	0	0
June 27	1.00	1.56	0	0
<b>W13 - 7942 Bradner Road</b>				
June 6	<0.10	1.53	0	0
June 13	0.24	1.18	0	0
June 20	0.31	1.03	0	0
June 27	0.20	1.50	0	0
<b>W15 - 3154 Clearbrook Road</b>				
June 6	0.15	1.87	0	0
June 13	0.12	1.71	0	0
June 20	0.28	1.72	0	0
June 27	0.10	1.72	0	0
<b>W16 - 27875 Swensson Avenue</b>				
June 6	<0.10	1.75	0	0
June 13	0.18	1.55	0	0
June 20	0.20	1.46	0	0
June 27	0.10	1.52	0	0

# City of Abbotsford Water Distribution System

Recent Water Quality Results

Updated: 2023-07-07 13:34



	Turbidity	Total Chlorine	Total Coliforms (counts)	E.coli (counts)
Units	NTU	mg/L	CFU/100mL	CFU/100mL
<b>W19 - 4945 Mt. Lehman Road</b>				
June 6	0.11	1.69	0	0
June 13	0.11	1.60	0	0
June 20	0.15	1.74	0	0
June 27	0.14	1.73	0	0
<b>W21 - 2059 Peardonville Road</b>				
June 6	<0.10	1.22	0	0
June 13	0.12	1.25	0	0
June 20	0.25	1.18	0	0
June 27	0.14	1.24	0	0
<b>W23 - 3612 Blue Jay Street</b>				
June 6	<0.10	1.79	0	0
June 13	0.11	1.60	0	0
June 20	0.23	1.74	0	0
June 27	0.12	1.72	0	0
<b>W34 - 926 Columbia Street</b>				
June 6	0.16	1.35	0	0
June 13	0.12	1.43	0	0
June 20	0.50	1.19	0	0
June 27	0.24	1.29	0	0
<b>Blank Cell = No Data Collected</b>				

# City of Abbotsford Water Distribution System

Recent Water Quality Results

Updated: 2023-07-07 13:34



Parameter	Description	Acceptable Range
<b>Turbidity</b>	Suspended matter that interferes with the clarity of the water. While not a health concern itself, turbidity is an indicator of possible contamination.	There are no regulations for distribution system turbidity; water system operators aim for less than 1.0 NTU.
<b>Total Chlorine</b>	Used to monitor the level of disinfectant used to inactivate microorganisms such as bacteria and viruses.	There are no regulations for distribution system total chlorine; system operators aim to maintain a detectable residual. As long as there are no total coliforms, lower values are not a concern. Higher values are not deemed a health concern unless they exceed the World Health Organization's recommended limit of 5ppm.
<b>Total Coliforms</b>	A group of bacteria that generally do not cause human disease, but their presence in water may indicate possible contamination.	The BC Drinking Water Act stipulates that no more than 10% of samples during a 30-day period may be positive for Total Coliforms and that no single sample may contain more than 10 counts.
<b>E. Coli</b>	A member of the Total Coliform group and its presence in water indicates contamination.	The BC Drinking Water Act stipulates that no E.Coli should be detected in drinking water.

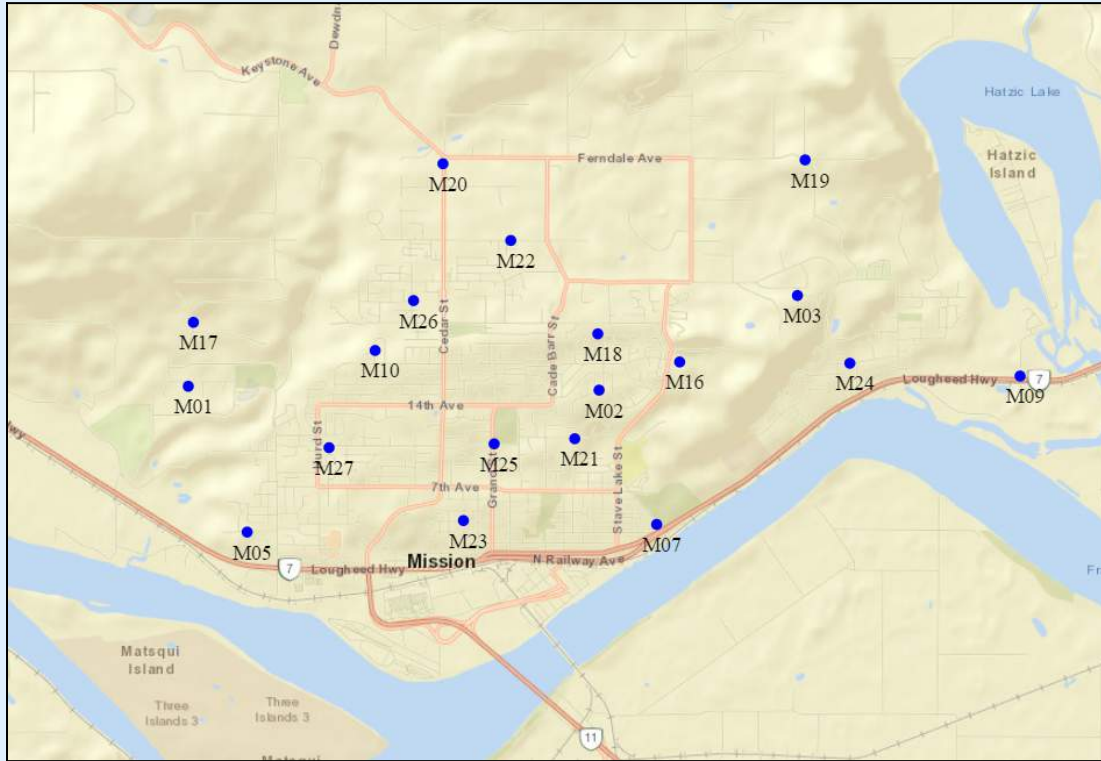
**Note: Turbidity and Total Chlorine are measured with field instruments. Result trends are used as indicators of significant water quality changes; specific values are not necessarily accurate.**

# City of Mission Water Distribution System

Recent Water Quality Results

Updated: 2023-08-15 15:19

## Sample Locations



- Refer to following pages for results.
- Water quality parameter descriptions on last page.

Route A - M1, M16, M19, M21, M22, M23, M24, M26, M27

Route B - M2, M3, M4, M5, M7, M9, M17, M18, M20, M25

Each route is tested biweekly.

### Questions?

District of Mission Public Works

604-820-3769

# City of Mission Water Distribution System

Recent Water Quality Results

Updated: 2023-08-15 15:19



	Turbidity	Total Chlorine	Total Coliforms (counts)	E.coli (counts)
Units	NTU	mg/L	CFU/100mL	CFU/100mL
<b>M01 - Israel</b>				
July 5	0.32	1.92	0	0
July 18	0.11	1.81	0	0
<b>M02 - Balsam</b>				
July 11	0.35	2.23	0	0
July 25	0.44	1.88	0	0
<b>M03 - Penner</b>				
July 11	0.38	2.26	0	0
July 25	0.36	1.91	0	0
<b>M05 - Hillcrest</b>				
July 11	0.16	1.59	0	0
July 25	0.23	1.70	0	0
<b>M07 - 4th &amp; Mary</b>				
July 11	0.13	1.76	0	0
July 25	0.20	1.76	0	0
<b>M09 - Shook</b>				
July 5	0.21	2.07	0	0
July 11	0.14	1.88	0	0
July 18	0.10	2.05	0	0
July 25	0.13	2.01	0	0
<b>M10 - Miller</b>				
July 11	0.39	2.16	0	0
July 25	0.39	1.80	0	0
<b>M16 - Best @ Barker</b>				
July 5	0.62	2.09	0	0
July 18	0.32	1.93	0	0
<b>M17 - TH Booster</b>				
July 11	0.13	1.80	0	0
July 25	0.31	1.87	0	0
<b>M18 - Blueberry</b>				
July 11	0.37	2.40	0	0
July 25	0.40	2.06	0	0
<b>M19 - Ferndale @ Erikson</b>				
July 5	1.90	2.30	0	0
July 18	0.57	2.38	0	0



# City of Mission Water Distribution System

Recent Water Quality Results

Updated: 2023-08-15 15:19



	Turbidity	Total Chlorine	Total Coliforms (counts)	E.coli (counts)
Units	NTU	mg/L	CFU/100mL	CFU/100mL
<b>M20 - DTR &amp; Cedar</b>				
July 11	0.49	2.28	0	0
July 25	0.32	2.55	0	0
<b>M21 - 11th &amp; Dunsmuir</b>				
July 5	0.42	1.97	0	0
July 18	0.08	2.09	0	0
<b>M22 - Tunbridge @ DTR</b>				
July 5	1.16	2.13	0	0
July 18	0.42	2.14	0	0
<b>M23 - 4th @ Alder</b>				
July 5	0.23	1.98	0	0
July 18	0.12	2.08	0	0
<b>M24 - Moffat</b>				
July 5	0.13	2.00	0	0
July 18	0.11	2.04	0	0
<b>M25 - 11th &amp; Grand</b>				
July 11	0.11	1.73	0	0
July 25	0.25	1.71	0	0
<b>M26 - Fennel</b>				
July 5	1.08	2.03	0	0
July 18	0.40	2.15	0	0
<b>M27 - McRae &amp; Hurd</b>				
July 5	0.09	2.02	0	0
July 18	0.08	1.96	0	0
<b>Blank Cell = No Data Collected</b>				

# City of Mission Water Distribution System

Recent Water Quality Results

Updated: 2023-08-15 15:19



Parameter	Description	Acceptable Range
<b>Turbidity</b>	Suspended matter that interferes with the clarity of the water. While not a health concern itself, turbidity is an indicator of possible contamination.	There are no regulations for distribution system turbidity; water system operators aim for less than 1.0 NTU.
<b>Total Chlorine</b>	Used to monitor the level of disinfectant used to inactivate microorganisms such as bacteria and viruses.	There are no regulations for distribution system total chlorine; system operators aim to maintain a detectable residual. As long as there are no total coliforms, lower values are not a concern. Higher values are not deemed a health concern unless they exceed the World Health Organization's recommended limit of 5ppm.
<b>Total Coliforms</b>	A group of bacteria that generally do not cause human disease, but their presence in water may indicate possible contamination.	The BC Drinking Water Act stipulates that no more than 10% of samples during a 30-day period may be positive for Total Coliforms and that no single sample may contain more than 10 counts.
<b>E. Coli</b>	A member of the Total Coliform group and its presence in water indicates contamination.	The BC Drinking Water Act stipulates that no E.Coli should be detected in drinking water.

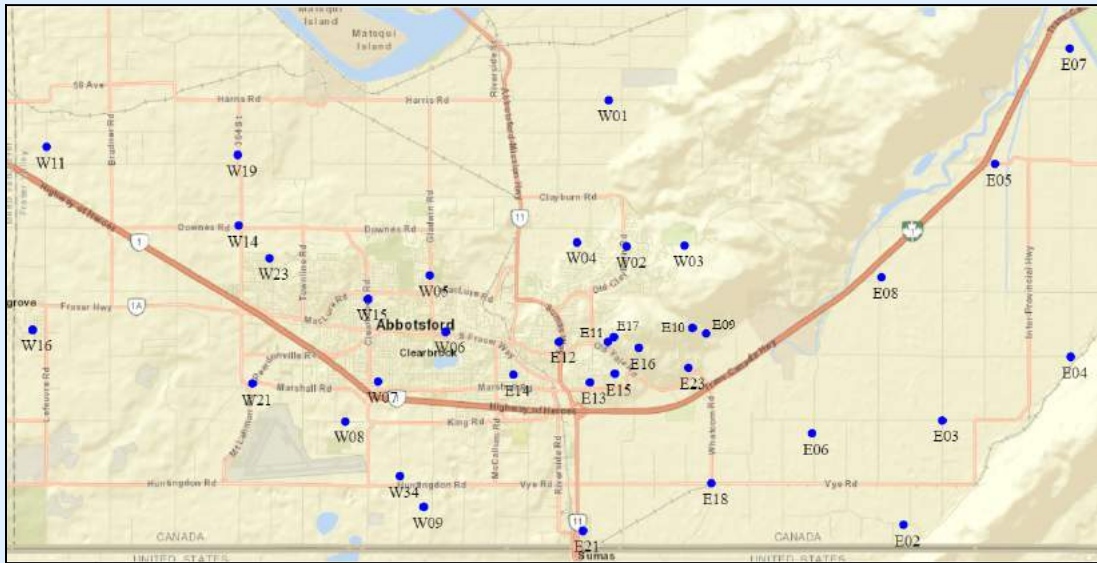
**Note: Turbidity and Total Chlorine are measured with field instruments. Result trends are used as indicators of significant water quality changes; specific values are not necessarily accurate.**

# City of Abbotsford Water Distribution System

Recent Water Quality Results

Updated: 2023-08-15 15:18

## Sample Locations



- Refer to following pages for results.
- Water quality parameter descriptions on last page.

### Week A

Southeast Route - E02, E07, E09, E10, E11, E12, E13, E14, E17, E18, W02, W03

Northwest Route - W01, W04, W05, W07, W11, W13, W15, W16, W19, W21, W23, W34

### Week B

Southeast Route - E07, E08, E09, E12, E13, E15, E16, E18, E21, E23, W02, W03

Northwest Route - W01, W04, W06, W07, W11, W13, W15, W16, W19, W21, W23, W34

Each week is tested biweekly.

### Questions?

City of Abbotsford Engineering

604-864-5511

[eng-info@abbotsford.ca](mailto:eng-info@abbotsford.ca)

# City of Abbotsford Water Distribution System

Recent Water Quality Results

Updated: 2023-08-15 15:18



	Turbidity	Total Chlorine	Total Coliforms (counts)	E.coli (counts)
Units	NTU	mg/L	CFU/100mL	CFU/100mL
<b>E02 - 310 Arnold Road</b>				
July 5	0.15	1.52	0	0
July 18	0.16	1.49	0	0
<b>E07 - 6230 Tolmie Road</b>				
July 5	0.20	1.12	0	0
July 11	0.20	0.95	0	0
July 18	0.10	0.93	0	0
July 25	0.11	0.79	0	0
<b>E08 - 3434 McDermott Road</b>				
July 11	0.19	0.96	0	0
July 25	0.10	0.91	0	0
<b>E09 - 36232 Lower Sumas Mountain Road</b>				
July 5	0.21	1.86	0	0
July 11	0.24	1.60	0	0
July 18	0.18	1.68	0	0
July 25	0.11	1.26	0	0
<b>E10 - 36101 Regal Parkway</b>				
July 5	0.16	1.81	0	0
July 18	0.13	1.66	0	0
<b>E11 - 2598 St. Moritz Way</b>				
July 5	0.13	1.49	0	0
July 18	0.16	1.26	0	0
<b>E12 - 2691 Beck Road</b>				
July 5	0.14	1.95	0	0
July 11	0.16	1.40	0	0
July 18	0.20	1.31	0	0
July 25	0.10	1.39	0	0
<b>E13 - 2087 McMillan Road</b>				
July 5	0.15	1.91	0	0
July 11	0.19	1.43	0	0
July 18	0.11	1.31	0	0
July 25	0.13	1.38	0	0
<b>E14 - 2211 Mouldstade Road</b>				
July 5	0.19	1.36	0	0
July 18	0.16	1.28	0	0

# City of Abbotsford Water Distribution System

Recent Water Quality Results

Updated: 2023-08-15 15:18



	Turbidity	Total Chlorine	Total Coliforms (counts)	E.coli (counts)
Units	NTU	mg/L	CFU/100mL	CFU/100mL
<b>E15 - 2215 Orchard Drive</b>				
July 11	0.18	1.19	0	0
July 25	0.11	1.62	0	0
<b>E16 - 2540 Eagle Mountain Drive</b>				
July 11	0.15	1.60	0	0
July 25	0.11	1.26	0	0
<b>E17 - 2720 St. Moritz Way</b>				
July 5	0.16	1.31	0	0
July 18	0.13	0.96	0	0
<b>E18 - 36321 Vye Road</b>				
July 5	0.20	1.55	0	0
July 11	0.17	1.40	0	0
July 18	0.25	1.44	0	0
July 25	0.11	1.41	0	0
<b>E21 - 34694 5th Avenue</b>				
July 11	0.18	1.37	0	0
July 25	0.21	1.46	0	0
<b>E23 - 36026 Village Knoll</b>				
July 11	0.25	1.32	0	0
July 25	0.12	1.39	0	0
<b>W01 - 35041 Harris Road</b>				
July 5	0.11	1.59	0	0
July 11	0.10	1.20	0	0
July 18	0.17	1.21	0	0
July 25	0.11	1.22	0	0
<b>W02 - 3836 Old Clayburn Road</b>				
July 5	0.21	1.82	0	0
July 11	0.20	1.69	0	0
July 18	0.10	1.75	0	0
July 25	0.14	1.65	0	0
<b>W03 - 35944 McKee Road</b>				
July 5	0.19	1.87	0	0
July 11	0.23	1.67	0	0
July 18	0.24	1.78	0	0
July 25	0.13	1.75	0	0

# City of Abbotsford Water Distribution System

Recent Water Quality Results

Updated: 2023-08-15 15:18



	Turbidity	Total Chlorine	Total Coliforms (counts)	E.coli (counts)
Units	NTU	mg/L	CFU/100mL	CFU/100mL
<b>W04 - 34638 Bateman Road</b>				
July 5	0.40	1.35	0	0
July 11	0.29	1.32	0	0
July 18	0.29	1.25	0	0
July 25	0.14	1.16	0	0
<b>W05 - 3315 Gladwin Road</b>				
July 5	0.23	1.90	0	0
July 18	0.22	1.53	0	0
<b>W06 - 32961 South Fraser Way</b>				
July 11	0.10	1.42	0	0
July 25	0.13	1.25	0	0
<b>W07 - 32111 Joyce Avenue</b>				
July 5	0.18	1.33	0	0
July 11	0.11	1.42	0	0
July 18	0.15	1.28	0	0
July 25	0.16	1.16	0	0
<b>W11 - 5030 Lefevre Road</b>				
July 5	0.15	1.56	0	0
July 11	0.13	1.36	0	0
July 18	0.22	1.39	0	0
July 25	0.17	1.20	0	0
<b>W13 - 7942 Bradner Road</b>				
July 5	0.14	1.66	0	0
July 11	0.15	0.92	0	0
July 18	0.12	0.78	0	0
July 25	0.18	1.28	0	0
<b>W15 - 3154 Clearbrook Road</b>				
July 5	0.24	1.44	0	0
July 11	0.11	1.58	0	0
July 18	0.13	1.60	0	0
July 25	0.11	1.36	0	0
<b>W16 - 27875 Swensson Avenue</b>				
July 5	0.19	1.48	0	0
July 11	0.10	1.27	0	0
July 18	0.23	1.28	0	0
July 25	0.20	1.10	0	0

# City of Abbotsford Water Distribution System

Recent Water Quality Results

Updated: 2023-08-15 15:18



	Turbidity	Total Chlorine	Total Coliforms (counts)	E.coli (counts)
Units	NTU	mg/L	CFU/100mL	CFU/100mL
<b>W19 - 4945 Mt. Lehman Road</b>				
July 5	0.14	1.82	0	0
July 11	0.09	1.66	0	0
July 18	0.20	1.74	0	0
July 25	0.12	1.59	0	0
<b>W21 - 2059 Peardonville Road</b>				
July 5	0.38	1.21	0	0
July 11	0.23	1.25	0	0
July 18	0.32	1.30	0	0
July 25	0.18	1.44	0	0
<b>W23 - 3612 Blue Jay Street</b>				
July 5	0.31	1.47	0	0
July 11	0.13	1.40	0	0
July 18	0.15	1.45	0	0
July 25	0.12	1.25	0	0
<b>W34 - 926 Columbia Street</b>				
July 5	0.25	1.12	0	0
July 11	0.21	1.17	0	0
July 18	0.38	1.14	0	0
July 25	0.38	0.93	0	0
<b>Blank Cell = No Data Collected</b>				

# City of Abbotsford Water Distribution System

Recent Water Quality Results

Updated: 2023-08-15 15:18



Parameter	Description	Acceptable Range
<b>Turbidity</b>	Suspended matter that interferes with the clarity of the water. While not a health concern itself, turbidity is an indicator of possible contamination.	There are no regulations for distribution system turbidity; water system operators aim for less than 1.0 NTU.
<b>Total Chlorine</b>	Used to monitor the level of disinfectant used to inactivate microorganisms such as bacteria and viruses.	There are no regulations for distribution system total chlorine; system operators aim to maintain a detectable residual. As long as there are no total coliforms, lower values are not a concern. Higher values are not deemed a health concern unless they exceed the World Health Organization's recommended limit of 5ppm.
<b>Total Coliforms</b>	A group of bacteria that generally do not cause human disease, but their presence in water may indicate possible contamination.	The BC Drinking Water Act stipulates that no more than 10% of samples during a 30-day period may be positive for Total Coliforms and that no single sample may contain more than 10 counts.
<b>E. Coli</b>	A member of the Total Coliform group and its presence in water indicates contamination.	The BC Drinking Water Act stipulates that no E.Coli should be detected in drinking water.

**Note: Turbidity and Total Chlorine are measured with field instruments. Result trends are used as indicators of significant water quality changes; specific values are not necessarily accurate.**

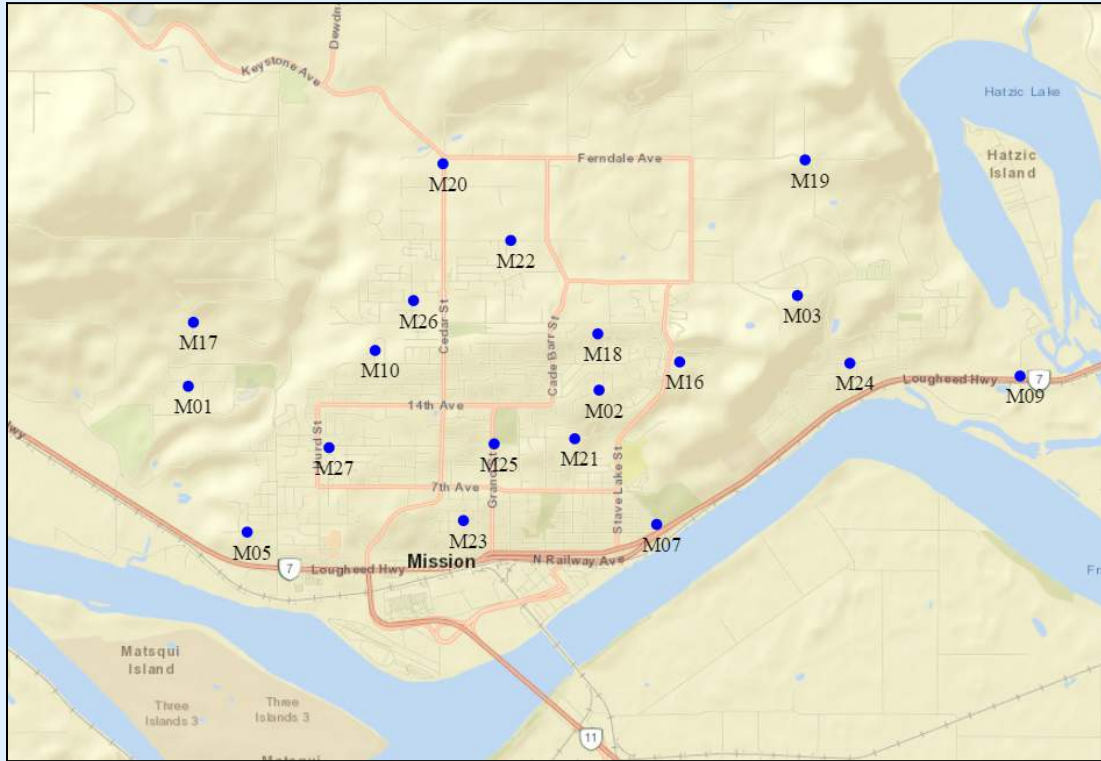


# City of Mission Water Distribution System

Recent Water Quality Results

Updated: 2023-09-06 15:26

## Sample Locations



- Refer to following pages for results.
- Water quality parameter descriptions on last page.

Route A - M1, M16, M19, M21, M22, M23, M24, M26, M27

Route B - M2, M3, M4, M5, M7, M9, M17, M18, M20, M25

Each route is tested biweekly.

### Questions?

District of Mission Public Works

604-820-3769

# City of Mission Water Distribution System

Recent Water Quality Results

Updated: 2023-09-06 15:26



	Turbidity	Total Chlorine	Total Coliforms (counts)	E.coli (counts)
Units	NTU	mg/L	CFU/100mL	CFU/100mL
<b>M01 - Israel</b>				
August 1	0.28	2.08	0	0
August 15	0.28	1.76	0	0
August 29	0.17	1.47	0	0
<b>M02 - Balsam</b>				
August 9	0.45	2.02	0	0
August 22	0.28	1.95	0	0
<b>M03 - Penner</b>				
August 9	0.31	2.09	0	0
August 22	0.29	2.16	0	0
<b>M05 - Hillcrest</b>				
August 9	0.18	1.85	0	0
August 22	0.11	1.60	0	0
<b>M07 - 4th &amp; Mary</b>				
August 9	0.15	1.93	0	0
August 22	0.13	1.74	0	0
<b>M09 - Shook</b>				
August 1	0.09	2.09	0	0
August 9	0.11	2.00	0	0
August 15	0.12	2.00	0	0
August 22	0.10	1.99	0	0
August 29	0.09	1.86	0	0
<b>M10 - Miller</b>				
August 9	0.29	1.93	0	0
August 22	0.28	1.89	0	0
<b>M16 - Best @ Barker</b>				
August 1	0.12	2.14	0	0
August 15	0.33	2.10	0	0
August 29	0.29	2.05	0	0
<b>M17 - TH Booster</b>				
August 9	0.20	1.92	0	0
August 22	0.13	1.58	0	0
<b>M18 - Blueberry</b>				
August 9	0.27	2.21	0	0
August 22	0.25	2.10	0	0

# City of Mission Water Distribution System

Recent Water Quality Results

Updated: 2023-09-06 15:26



	Turbidity	Total Chlorine	Total Coliforms (counts)	E.coli (counts)
Units	NTU	mg/L	CFU/100mL	CFU/100mL
<b>M19 - Ferndale @ Erikson</b>				
August 1	0.31	2.14	0	0
August 15	0.26	1.93	0	0
August 29	0.31	1.97	0	0
<b>M20 - DTR &amp; Cedar</b>				
August 9	0.31	2.38	0	0
August 22	0.33	2.25	0	0
<b>M21 - 11th &amp; Dunsmuir</b>				
August 1	0.10	1.89	0	0
August 15	0.13	1.90	0	0
August 29	0.15	1.77	0	0
<b>M22 - Tunbridge @ DTR</b>				
August 1	0.35	2.24	0	0
August 15	0.32	2.20	0	0
August 29	0.31	2.16	0	0
<b>M23 - 4th @ Alder</b>				
August 1	0.09	1.95	0	0
August 15	0.10	1.90	0	0
August 29	0.12	1.74	0	0
<b>M24 - Moffat</b>				
August 1	0.11	1.91	0	0
August 15	0.13	1.78	0	0
August 29	0.14	1.81	0	0
<b>M25 - 11th &amp; Grand</b>				
August 9	0.10	1.83	0	0
August 22	0.08	1.67	0	0
<b>M26 - Fennel</b>				
August 1	0.40	2.38	0	0
August 15	0.30	2.20	0	0
August 29	0.41	2.22	0	0
<b>M27 - McRae &amp; Hurd</b>				
August 1	0.12	1.96	0	0
August 15	0.14	1.90	0	0
August 29	0.10	1.67	0	0
<b>Blank Cell = No Data Collected</b>				

# City of Mission Water Distribution System

Recent Water Quality Results

Updated: 2023-09-06 15:26



Parameter	Description	Acceptable Range
<b>Turbidity</b>	Suspended matter that interferes with the clarity of the water. While not a health concern itself, turbidity is an indicator of possible contamination.	There are no regulations for distribution system turbidity; water system operators aim for less than 1.0 NTU.
<b>Total Chlorine</b>	Used to monitor the level of disinfectant used to inactivate microorganisms such as bacteria and viruses.	There are no regulations for distribution system total chlorine; system operators aim to maintain a detectable residual. As long as there are no total coliforms, lower values are not a concern. Higher values are not deemed a health concern unless they exceed the World Health Organization's recommended limit of 5ppm.
<b>Total Coliforms</b>	A group of bacteria that generally do not cause human disease, but their presence in water may indicate possible contamination.	The BC Drinking Water Act stipulates that no more than 10% of samples during a 30-day period may be positive for Total Coliforms and that no single sample may contain more than 10 counts.
<b>E. Coli</b>	A member of the Total Coliform group and its presence in water indicates contamination.	The BC Drinking Water Act stipulates that no E.Coli should be detected in drinking water.

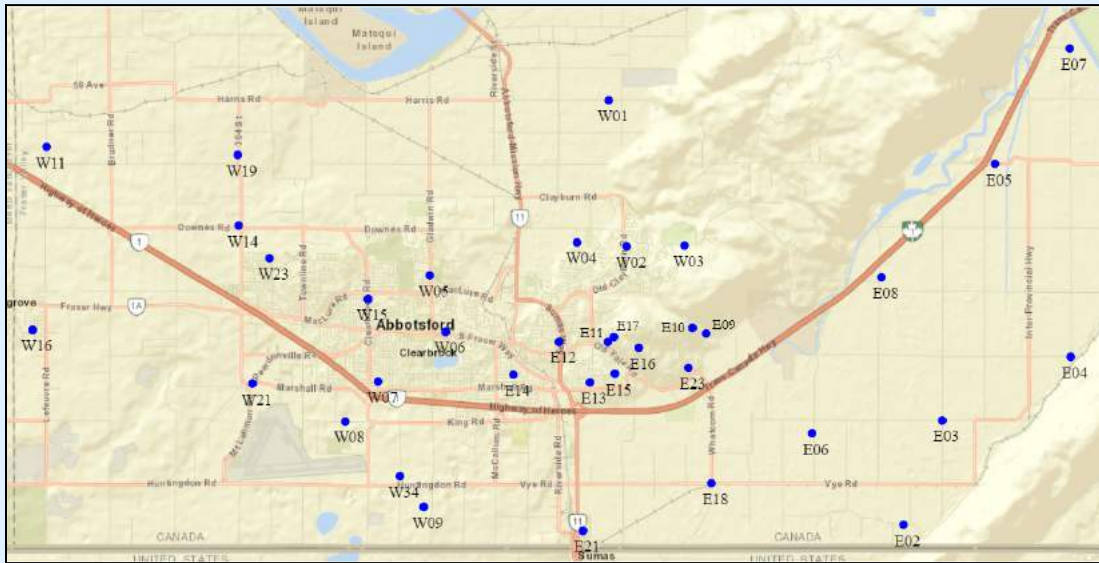
**Note: Turbidity and Total Chlorine are measured with field instruments. Result trends are used as indicators of significant water quality changes; specific values are not necessarily accurate.**

# City of Abbotsford Water Distribution System

Recent Water Quality Results

Updated: 2023-09-06 15:23

## Sample Locations



- Refer to following pages for results.
- Water quality parameter descriptions on last page.

### Week A

Southeast Route - E02, E07, E09, E10, E11, E12, E13, E14, E17, E18, W02, W03

Northwest Route - W01, W04, W05, W07, W11, W13, W15, W16, W19, W21, W23, W34

### Week B

Southeast Route - E07, E08, E09, E12, E13, E15, E16, E18, E21, E23, W02, W03

Northwest Route - W01, W04, W06, W07, W11, W13, W15, W16, W19, W21, W23, W34

Each week is tested biweekly.

### Questions?

City of Abbotsford Engineering

604-864-5511

[eng-info@abbotsford.ca](mailto:eng-info@abbotsford.ca)

# City of Abbotsford Water Distribution System

Recent Water Quality Results

Updated: 2023-09-06 15:23



	Turbidity	Total Chlorine	Total Coliforms (counts)	E.coli (counts)
Units	NTU	mg/L	CFU/100mL	CFU/100mL
<b>E02 - 310 Arnold Road</b>				
August 1	0.17	1.39	0	0
August 15	0.33	1.45	0	0
August 29	0.29	1.33	0	0
<b>E07 - 6230 Tolmie Road</b>				
August 1	0.35	0.80	0	0
August 9	0.23	0.86	0	0
August 15	0.16	0.79	0	0
August 22	0.31	0.72	0	0
August 29	0.37	0.80	0	0
<b>E08 - 3434 McDermott Road</b>				
August 9	0.25	1.46	0	0
August 22	0.28	0.88	0	0
<b>E09 - 36232 Lower Sumas Mountain Road</b>				
August 1	0.20	1.53	0	0
August 9	0.17	1.16	0	0
August 15	0.20	1.40	0	0
August 22	0.25	1.25	0	0
August 29	0.39	1.25	0	0
<b>E10 - 36101 Regal Parkway</b>				
August 1	0.15	1.66	0	0
August 15	0.14	1.41	0	0
August 29	0.36	1.47	0	0
<b>E11 - 2598 St. Moritz Way</b>				
August 1	0.18	1.58	0	0
August 15	0.18	1.03	0	0
August 29	0.17	1.16	0	0
<b>E12 - 2691 Beck Road</b>				
August 1	0.16	1.49	0	0
August 9	0.16	1.42	0	0
August 15	0.17	1.32	0	0
August 22	0.24	1.47	0	0
August 29	0.22	1.41	0	0
<b>E13 - 2087 McMillan Road</b>				
August 1	0.12	1.39	0	0
August 9	0.13	1.29	0	0

# City of Abbotsford Water Distribution System

Recent Water Quality Results

Updated: 2023-09-06 15:23



	Turbidity	Total Chlorine	Total Coliforms (counts)	E.coli (counts)
Units	NTU	mg/L	CFU/100mL	CFU/100mL
<b>E13 - 2087 McMillan Road</b>				
August 15	0.20	1.23	0	0
August 22	0.21	1.23	0	0
August 29	0.25	1.28	0	0
<b>E14 - 2211 Mouldstade Road</b>				
August 1	0.18	1.32	0	0
August 15	0.25	1.35	0	0
August 29	0.15	1.23	0	0
<b>E15 - 2215 Orchard Drive</b>				
August 9	0.16	1.18	0	0
August 22	0.23	1.35	0	0
<b>E16 - 2540 Eagle Mountain Drive</b>				
August 9	0.12	1.55	0	0
August 22	0.25	1.71	0	0
<b>E17 - 2720 St. Moritz Way</b>				
August 1	0.18	1.45	0	0
August 15	0.16	0.85	0	0
August 29	0.20	1.12	0	0
<b>E18 - 36321 Vye Road</b>				
August 1	0.15	1.54	0	0
August 9	0.24	1.47	0	0
August 15	0.27	1.46	0	0
August 22	0.22	1.43	0	0
August 29	0.19	1.31	0	0
<b>E21 - 34694 5th Avenue</b>				
August 9	0.20	1.43	0	0
August 22	0.20	1.38	0	0
<b>E23 - 36026 Village Knoll</b>				
August 9	0.17	1.33	0	0
August 22	0.25	1.27	0	0
<b>W01 - 35041 Harris Road</b>				
August 1	0.17	1.57	0	0
August 9	0.15	1.14	0	0
August 15	0.20	1.26	0	0
August 22	0.36	1.03	0	0
August 29	0.16	1.18	0	0

# City of Abbotsford Water Distribution System

Recent Water Quality Results

Updated: 2023-09-06 15:23



	Turbidity	Total Chlorine	Total Coliforms (counts)	E.coli (counts)
Units	NTU	mg/L	CFU/100mL	CFU/100mL
<b>W02 - 3836 Old Clayburn Road</b>				
August 1	0.10	1.80	0	0
August 9	0.22	1.65	0	0
August 15	0.38	1.67	0	0
August 22	0.25	1.74	0	0
August 29	0.39	1.63	0	0
<b>W03 - 35944 McKee Road</b>				
August 1	0.14	1.71	0	0
August 9	0.16	1.78	0	0
August 15	0.21	1.16	0	0
August 22	0.29	1.25	0	0
August 29	0.18	1.38	0	0
<b>W04 - 34638 Bateman Road</b>				
August 1	0.22	1.18	0	0
August 9	0.16	1.13	0	0
August 15	0.35	1.27	0	0
August 22	0.14	1.13	0	0
August 29	0.21	1.27	0	0
<b>W05 - 3315 Gladwin Road</b>				
August 1	0.26	1.87	0	0
August 15	0.19	1.31	0	0
August 29	0.26	1.43	0	0
<b>W06 - 32961 South Fraser Way</b>				
August 9	0.17	1.43	0	0
August 22	0.18	1.21	0	0
<b>W07 - 32111 Joyce Avenue</b>				
August 1	0.19	1.22	0	0
August 9	0.14	1.09	0	0
August 15	0.28	1.27	0	0
August 22	0.35	1.17	0	0
August 29	0.49	1.24	0	0
<b>W11 - 5030 Lefeuve Road</b>				
August 1	0.18	1.23	0	0
August 9	0.17	1.28	0	0
August 15	0.20	1.30	0	0
August 22	0.19	1.12	0	0
August 29	0.19	1.23	0	0



# City of Abbotsford Water Distribution System

Recent Water Quality Results

Updated: 2023-09-06 15:23



	Turbidity	Total Chlorine	Total Coliforms (counts)	E.coli (counts)
Units	NTU	mg/L	CFU/100mL	CFU/100mL
<b>W13 - 7942 Bradner Road</b>				
August 1	0.17	0.95	0	0
August 9	0.12	0.90	0	0
August 15	0.25	1.38	0	0
August 22	0.17	0.88	0	0
August 29	0.34	0.81	0	0
<b>W15 - 3154 Clearbrook Road</b>				
August 1	0.16	1.39	0	0
August 9	0.19	1.62	0	0
August 15	0.21	1.42	0	0
August 22	0.12	1.39	0	0
August 29	0.21	1.56	0	0
<b>W16 - 27875 Swensson Avenue</b>				
August 1	0.25	1.18	0	0
August 9	0.19	1.25	0	0
August 15	0.15	1.19	0	0
August 22	0.23	1.13	0	0
August 29	0.27	1.25	0	0
<b>W19 - 4945 Mt. Lehman Road</b>				
August 1	0.33	1.90	0	0
August 9	0.12	1.74	0	0
August 15	0.18	1.71	0	0
August 22	0.16	1.58	0	0
August 29	0.23	1.62	0	0
<b>W21 - 2059 Peardonville Road</b>				
August 1	0.23	1.36	0	0
August 9	0.20	1.18	0	0
August 15	0.40	1.27	0	0
August 22	0.29	1.28	0	0
August 29	0.86	1.17	0	0
<b>W23 - 3612 Blue Jay Street</b>				
August 1	0.33	1.24	0	0
August 9	0.28	1.33	0	0
August 15	0.18	1.26	0	0
August 22	0.17	1.25	0	0
August 29	0.21	1.45	0	0

# City of Abbotsford Water Distribution System

Recent Water Quality Results

Updated: 2023-09-06 15:23



	Turbidity	Total Chlorine	Total Coliforms (counts)	E.coli (counts)
Units	NTU	mg/L	CFU/100mL	CFU/100mL
<b>W34 - 926 Columbia Street</b>				
August 1	0.35	0.98	0	0
August 9	0.38	0.92	0	0
August 15	0.22	1.14	0	0
August 22	0.44	1.05	0	0
August 29	0.95	1.27	0	0
<b>Blank Cell = No Data Collected</b>				

# City of Abbotsford Water Distribution System

Recent Water Quality Results

Updated: 2023-09-06 15:23



Parameter	Description	Acceptable Range
<b>Turbidity</b>	Suspended matter that interferes with the clarity of the water. While not a health concern itself, turbidity is an indicator of possible contamination.	There are no regulations for distribution system turbidity; water system operators aim for less than 1.0 NTU.
<b>Total Chlorine</b>	Used to monitor the level of disinfectant used to inactivate microorganisms such as bacteria and viruses.	There are no regulations for distribution system total chlorine; system operators aim to maintain a detectable residual. As long as there are no total coliforms, lower values are not a concern. Higher values are not deemed a health concern unless they exceed the World Health Organization's recommended limit of 5ppm.
<b>Total Coliforms</b>	A group of bacteria that generally do not cause human disease, but their presence in water may indicate possible contamination.	The BC Drinking Water Act stipulates that no more than 10% of samples during a 30-day period may be positive for Total Coliforms and that no single sample may contain more than 10 counts.
<b>E. Coli</b>	A member of the Total Coliform group and its presence in water indicates contamination.	The BC Drinking Water Act stipulates that no E.Coli should be detected in drinking water.

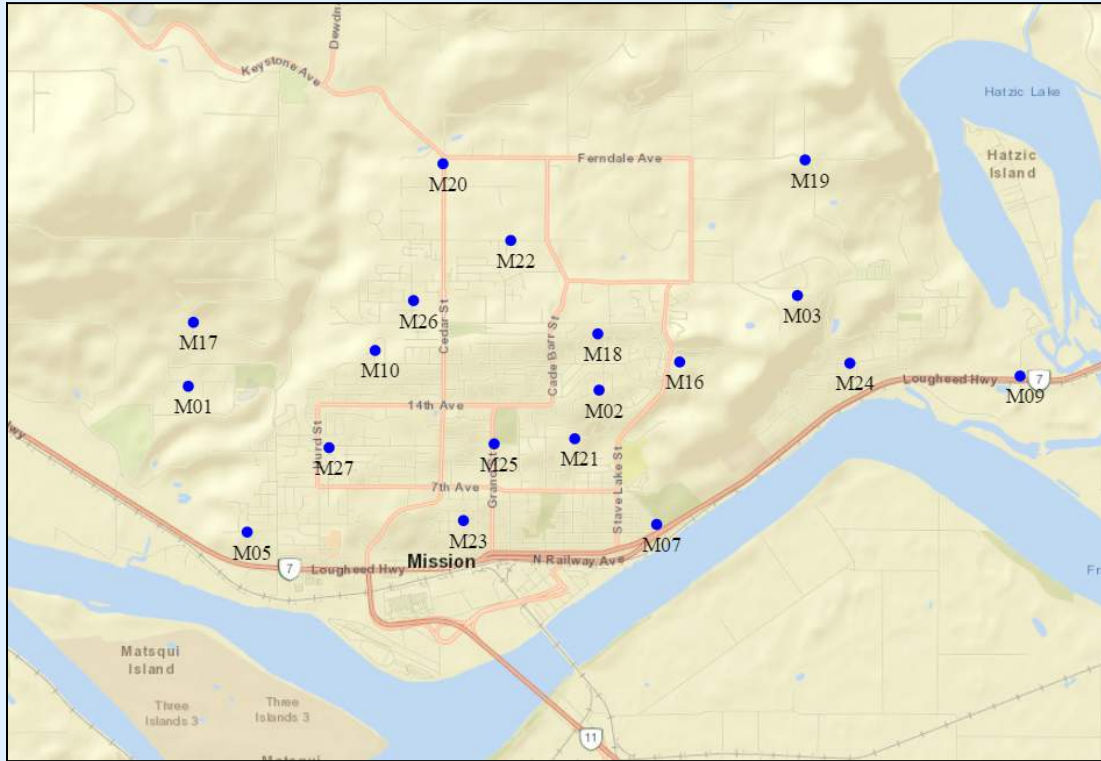
**Note: Turbidity and Total Chlorine are measured with field instruments. Result trends are used as indicators of significant water quality changes; specific values are not necessarily accurate.**

# City of Mission Water Distribution System

Recent Water Quality Results

Updated: 2023-10-13 11:52

## Sample Locations



- Refer to following pages for results.
- Water quality parameter descriptions on last page.

Route A - M1, M16, M19, M21, M22, M23, M24, M26, M27

Route B - M2, M3, M4, M5, M7, M9, M17, M18, M20, M25

Each route is tested biweekly.

### Questions?

District of Mission Public Works

604-820-3769

# City of Mission Water Distribution System

Recent Water Quality Results

Updated: 2023-10-13 11:52



	Turbidity	Total Chlorine	Total Coliforms (counts)	E.coli (counts)
Units	NTU	mg/L	CFU/100mL	CFU/100mL
<b>M01 - Israel</b>				
September 12	<0.10	1.59	0	0
September 26	0.11	1.84	0	0
<b>M02 - Balsam</b>				
September 6	0.28	1.85	0	0
September 19	0.35	2.10	0	0
<b>M03 - Penner</b>				
September 6	0.29	2.00	0	0
September 19	0.34	2.24	0	0
<b>M05 - Hillcrest</b>				
September 6	0.15	1.56	0	0
September 19	0.14	1.62	0	0
<b>M07 - 4th &amp; Mary</b>				
September 6	0.09	1.64	0	0
September 19	0.17	1.67	0	0
<b>M09 - Shook</b>				
September 6	0.09	1.82	0	0
September 12	0.08	2.15	0	0
September 19	0.18	1.78	0	0
September 26	0.09	1.80	0	0
<b>M10 - Miller</b>				
September 6	0.28	1.73	0	0
September 19	0.30	1.83	0	0
<b>M16 - Best @ Barker</b>				
September 12	0.29	1.87	0	0
September 26	0.31	1.90	0	0
<b>M17 - TH Booster</b>				
September 6	0.11	1.60	0	0
September 19	0.35	2.06	0	0
<b>M18 - Blueberry</b>				
September 6	0.38	1.94	0	0
September 19	0.37	2.06	0	0
<b>M19 - Ferndale @ Erikson</b>				
September 12	0.26	2.15	0	0
September 26	0.27	2.14	0	0

# City of Mission Water Distribution System

Recent Water Quality Results

Updated: 2023-10-13 11:52



	Turbidity	Total Chlorine	Total Coliforms (counts)	E.coli (counts)
Units	NTU	mg/L	CFU/100mL	CFU/100mL
<b>M20 - DTR &amp; Cedar</b>				
September 6	0.36	2.71	0	0
September 19	0.66	2.62	0	0
<b>M21 - 11th &amp; Dunsmuir</b>				
September 12	0.10	1.90	0	0
September 26	0.08	1.89	0	0
<b>M22 - Tunbridge @ DTR</b>				
September 12	0.29	2.35	0	0
September 26	0.28	2.36	0	0
<b>M23 - 4th @ Alder</b>				
September 12	<0.10	1.92	0	0
September 26	0.08	1.71	0	0
<b>M24 - Moffat</b>				
September 12	<0.10	2.09	0	0
September 26	0.10	1.74	0	0
<b>M25 - 11th &amp; Grand</b>				
September 6	0.11	1.56	0	0
September 19	0.09	1.62	0	0
<b>M26 - Fennel</b>				
September 12	0.32	2.48	0	0
September 26	0.68	2.33	0	0
<b>M27 - McRae &amp; Hurd</b>				
September 12	0.10	1.96	0	0
September 26	0.11	1.80	0	0
<b>Blank Cell = No Data Collected</b>				

# City of Mission Water Distribution System

Recent Water Quality Results

Updated: 2023-10-13 11:52



Parameter	Description	Acceptable Range
<b>Turbidity</b>	Suspended matter that interferes with the clarity of the water. While not a health concern itself, turbidity is an indicator of possible contamination.	There are no regulations for distribution system turbidity; water system operators aim for less than 1.0 NTU.
<b>Total Chlorine</b>	Used to monitor the level of disinfectant used to inactivate microorganisms such as bacteria and viruses.	There are no regulations for distribution system total chlorine; system operators aim to maintain a detectable residual. As long as there are no total coliforms, lower values are not a concern. Higher values are not deemed a health concern unless they exceed the World Health Organization's recommended limit of 5ppm.
<b>Total Coliforms</b>	A group of bacteria that generally do not cause human disease, but their presence in water may indicate possible contamination.	The BC Drinking Water Act stipulates that no more than 10% of samples during a 30-day period may be positive for Total Coliforms and that no single sample may contain more than 10 counts.
<b>E. Coli</b>	A member of the Total Coliform group and its presence in water indicates contamination.	The BC Drinking Water Act stipulates that no E.Coli should be detected in drinking water.

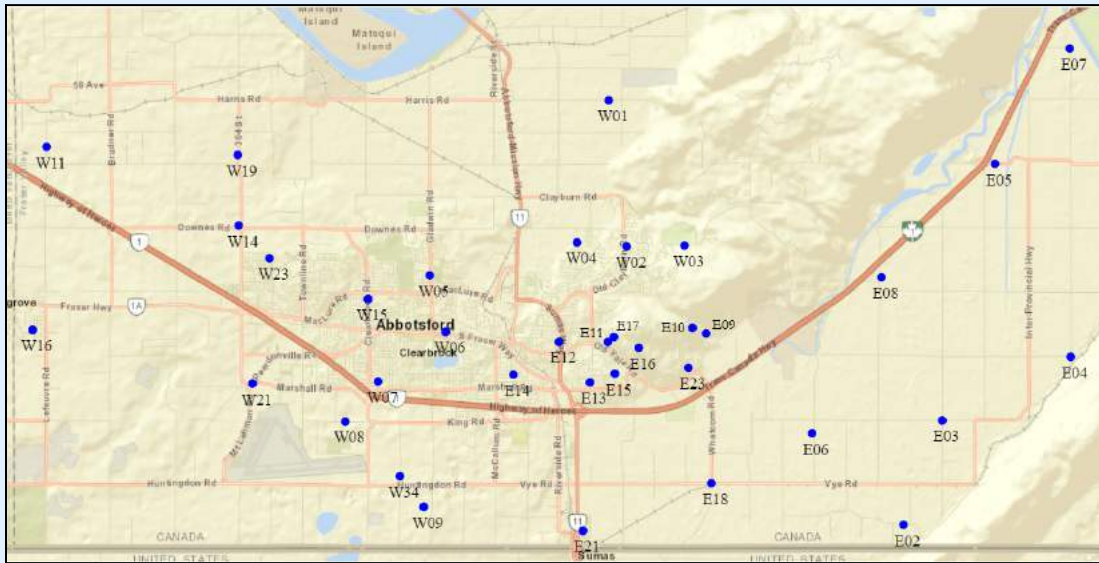
**Note: Turbidity and Total Chlorine are measured with field instruments. Result trends are used as indicators of significant water quality changes; specific values are not necessarily accurate.**

# City of Abbotsford Water Distribution System

Recent Water Quality Results

Updated: 2023-10-13 11:44

## Sample Locations



- Refer to following pages for results.
- Water quality parameter descriptions on last page.

### Week A

Southeast Route - E02, E07, E09, E10, E11, E12, E13, E14, E17, E18, W02, W03

Northwest Route - W01, W04, W05, W07, W11, W13, W15, W16, W19, W21, W23, W34

### Week B

Southeast Route - E07, E08, E09, E12, E13, E15, E16, E18, E21, E23, W02, W03

Northwest Route - W01, W04, W06, W07, W11, W13, W15, W16, W19, W21, W23, W34

Each week is tested biweekly.

### Questions?

City of Abbotsford Engineering

604-864-5511

[eng-info@abbotsford.ca](mailto:eng-info@abbotsford.ca)



# City of Abbotsford Water Distribution System

Recent Water Quality Results

Updated: 2023-10-13 11:44



	Turbidity	Total Chlorine	Total Coliforms (counts)	E.coli (counts)
Units	NTU	mg/L	CFU/100mL	CFU/100mL
<b>E02 - 310 Arnold Road</b>				
September 12	0.44	1.25	0	0
September 26	0.38	1.16	0	0
<b>E07 - 6230 Tolmie Road</b>				
September 6	<0.10	0.41	0	0
September 12	0.31	0.44	0	0
September 19	0.15	0.65	0	0
September 26	0.48	0.63	0	0
<b>E08 - 3434 McDermott Road</b>				
September 6	0.10	0.73	0	0
September 19	0.20	0.84	0	0
<b>E09 - 36232 Lower Sumas Mountain Road</b>				
September 6	0.12	1.18	0	0
September 12	0.22	1.30	0	0
September 19	0.20	1.22	0	0
September 26	0.43	1.11	0	0
<b>E10 - 36101 Regal Parkway</b>				
September 12	0.25	1.48	0	0
September 26	0.55	1.68	0	0
<b>E11 - 2598 St. Moritz Way</b>				
September 12	0.36	1.25	0	0
September 26	0.23	1.69	0	0
<b>E12 - 2691 Beck Road</b>				
September 6	<0.10	1.44	0	0
September 12	0.35	1.42	0	0
September 19	0.22	1.35	0	0
September 26	0.18	1.44	0	0
<b>E13 - 2087 McMillan Road</b>				
September 6	<0.10	1.34	0	0
September 12	0.40	1.36	1.0*	0
September 15	0.15	1.41	0	0
September 19	0.12	1.42	0	0
September 26	0.29	1.51	0	0
<b>E14 - 2211 Mouldstade Road</b>				
September 12	0.21	1.24	0	0
September 26	0.23	1.35	0	0

# City of Abbotsford Water Distribution System

Recent Water Quality Results

Updated: 2023-10-13 11:44



	Turbidity	Total Chlorine	Total Coliforms (counts)	E.coli (counts)
Units	NTU	mg/L	CFU/100mL	CFU/100mL
<b>E15 - 2215 Orchard Drive</b>				
September 6	0.15	1.42	0	0
September 19	0.15	1.61	0	0
<b>E16 - 2540 Eagle Mountain Drive</b>				
September 6	0.18	1.45	0	0
September 19	0.27	1.24	0	0
<b>E17 - 2720 St. Moritz Way</b>				
September 12	0.19	1.31	0	0
September 26	0.32	1.33	0	0
<b>E18 - 36321 Vye Road</b>				
September 6	<0.10	1.31	0	0
September 12	0.19	1.47	0	0
September 19	0.42	1.46	0	0
September 26	0.49	1.25	0	0
<b>E21 - 34694 5th Avenue</b>				
September 6	<0.10	1.19	0	0
September 19	0.53	1.44	0	0
<b>E23 - 36026 Village Knoll</b>				
September 6	<0.10	1.29	0	0
September 19	0.16	1.46	0	0
<b>W01 - 35041 Harris Road</b>				
September 6	0.19	1.40	0	0
September 12	0.15	1.57	0	0
September 19	0.22	1.32	0	0
September 26	0.18	1.64	0	0
<b>W02 - 3836 Old Clayburn Road</b>				
September 6	0.11	1.55	0	0
September 12	0.27	1.62	0	0
September 19	0.12	1.29	0	0
September 26	0.16	1.56	0	0
<b>W03 - 35944 McKee Road</b>				
September 6	0.13	1.63	0	0
September 12	0.38	1.70	0	0
September 19	0.21	1.48	0	0
September 26	0.26	1.23	0	0

# City of Abbotsford Water Distribution System

Recent Water Quality Results

Updated: 2023-10-13 11:44



	Turbidity	Total Chlorine	Total Coliforms (counts)	E.coli (counts)
Units	NTU	mg/L	CFU/100mL	CFU/100mL
<b>W04 - 34638 Bateman Road</b>				
September 6	0.16	1.17	0	0
September 12	0.23	1.18	0	0
September 19	0.25	1.35	0	0
September 26	0.20	1.20	0	0
<b>W05 - 3315 Gladwin Road</b>				
September 12	0.22	1.31	0	0
September 26	0.30	1.61	0	0
<b>W06 - 32961 South Fraser Way</b>				
September 6	0.10	1.34	0	0
September 19	0.16	1.26	0	0
<b>W07 - 32111 Joyce Avenue</b>				
September 6	0.11	1.33	0	0
September 12	0.49	1.32	0	0
September 19	0.13	1.36	0	0
September 26	0.13	1.27	0	0
<b>W11 - 5030 Lefeuve Road</b>				
September 6	0.20	0.99	0	0
September 12	0.22	1.20	0	0
September 19	0.21	1.28	0	0
September 26	0.15	1.31	0	0
<b>W13 - 7942 Bradner Road</b>				
September 6	0.16	0.67	0	0
September 12	0.26	0.76	0	0
September 19	0.23	1.42	0	0
September 26	0.20	1.44	0	0
<b>W15 - 3154 Clearbrook Road</b>				
September 6	0.17	1.56	0	0
September 12	0.12	1.53	0	0
September 19	0.16	1.51	0	0
September 26	0.24	1.57	0	0
<b>W16 - 27875 Swensson Avenue</b>				
September 6	0.13	1.20	0	0
September 12	0.22	1.18	0	0
September 19	0.25	1.17	0	0
September 26	0.21	1.21	0	0

# City of Abbotsford Water Distribution System

Recent Water Quality Results

Updated: 2023-10-13 11:44



	Turbidity	Total Chlorine	Total Coliforms (counts)	E.coli (counts)
Units	NTU	mg/L	CFU/100mL	CFU/100mL
<b>W19 - 4945 Mt. Lehman Road</b>				
September 6	0.15	1.57	0	0
September 12	0.25	1.76	0	0
September 19	0.20	1.61	0	0
September 26	0.32	1.61	0	0
<b>W21 - 2059 Peardonville Road</b>				
September 6	0.12	0.84	0	0
September 12	0.26	1.31	0	0
September 19	0.25	1.13	0	0
September 26	0.37	1.08	0	0
<b>W23 - 3612 Blue Jay Street</b>				
September 6	0.22	1.40	0	0
September 12	0.18	1.34	0	0
September 19	0.24	1.36	0	0
September 26	0.36	1.41	0	0
<b>W34 - 926 Columbia Street</b>				
September 6	0.13	1.28	0	0
September 12	0.25	1.15	0	0
September 19	0.33	1.06	0	0
September 26	0.31	1.32	0	0
<b>Blank Cell = No Data Collected</b>				

# City of Abbotsford Water Distribution System

Recent Water Quality Results

Updated: 2023-10-13 11:44



Parameter	Description	Acceptable Range
<b>Turbidity</b>	Suspended matter that interferes with the clarity of the water. While not a health concern itself, turbidity is an indicator of possible contamination.	There are no regulations for distribution system turbidity; water system operators aim for less than 1.0 NTU.
<b>Total Chlorine</b>	Used to monitor the level of disinfectant used to inactivate microorganisms such as bacteria and viruses.	There are no regulations for distribution system total chlorine; system operators aim to maintain a detectable residual. As long as there are no total coliforms, lower values are not a concern. Higher values are not deemed a health concern unless they exceed the World Health Organization's recommended limit of 5ppm.
<b>Total Coliforms</b>	A group of bacteria that generally do not cause human disease, but their presence in water may indicate possible contamination.	The BC Drinking Water Act stipulates that no more than 10% of samples during a 30-day period may be positive for Total Coliforms and that no single sample may contain more than 10 counts.
<b>E. Coli</b>	A member of the Total Coliform group and its presence in water indicates contamination.	The BC Drinking Water Act stipulates that no E.Coli should be detected in drinking water.

**Note: Turbidity and Total Chlorine are measured with field instruments. Result trends are used as indicators of significant water quality changes; specific values are not necessarily accurate.**

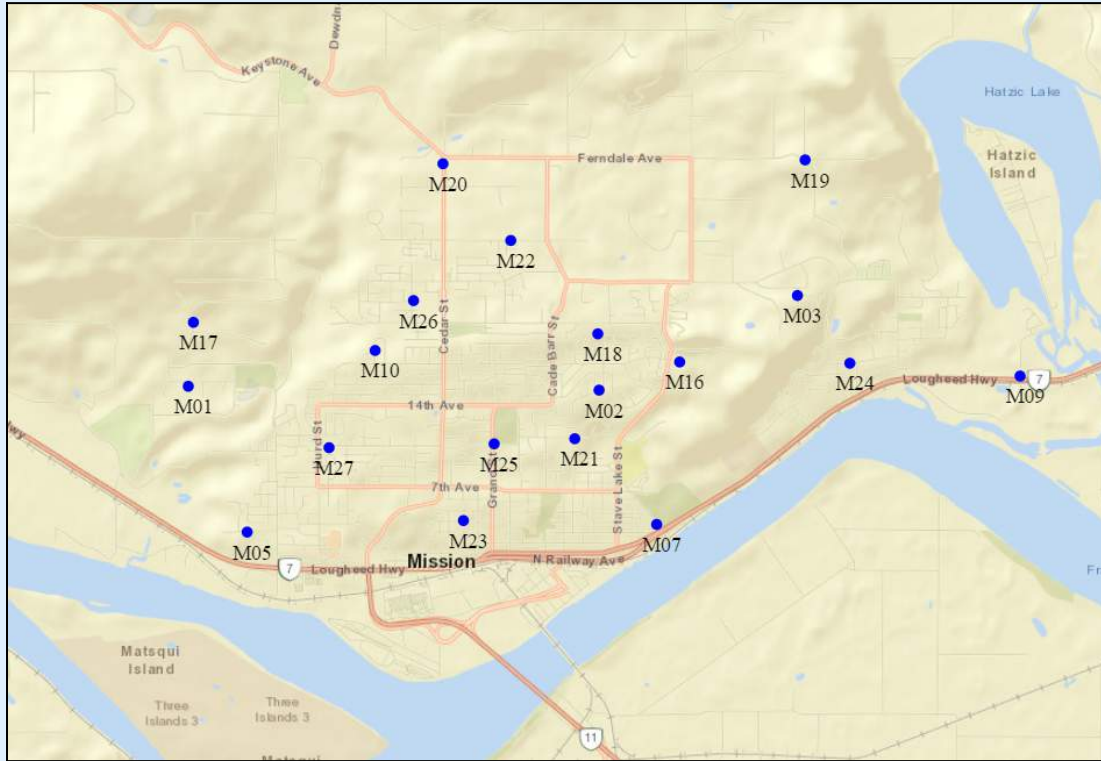
**\*Low TC count. Fraser Health is informed of all adverse results.**

# City of Mission Water Distribution System

Recent Water Quality Results

Updated: 2023-11-09 15:07

## Sample Locations



- Refer to following pages for results.
- Water quality parameter descriptions on last page.

Route A - M1, M16, M19, M21, M22, M23, M24, M26, M27

Route B - M2, M3, M4, M5, M7, M9, M17, M18, M20, M25

Each route is tested biweekly.

### Questions?

District of Mission Public Works

604-820-3769

# City of Mission Water Distribution System

Recent Water Quality Results

Updated: 2023-11-09 15:07



	Turbidity	Total Chlorine	Total Coliforms (counts)	E.coli (counts)
Units	NTU	mg/L	CFU/100mL	CFU/100mL
<b>M01 - Israel</b>				
October 11	0.11	1.69	0	0
October 24	0.34	1.94	0	0
<b>M02 - Balsam</b>				
October 4	0.32	1.51	0	0
October 17	0.35	1.84	0	0
October 31	0.40	1.83	0	0
<b>M03 - Penner</b>				
October 4	0.33	1.49	0	0
October 17	0.32	2.19	0	0
October 31	0.60	2.12	0	0
<b>M05 - Hillcrest</b>				
October 4	0.10	1.67	0	0
October 17	0.13	1.56	0	0
October 31	0.22	1.94	0	0
<b>M07 - 4th &amp; Mary</b>				
October 4	0.13	1.79	0	0
October 17	0.10	1.74	0	0
October 31	0.11	1.87	0	0
<b>M09 - Shook</b>				
October 4	0.11	1.97	0	0
October 11	0.08	1.79	0	0
October 17	0.13	1.63	0	0
October 24	0.13	2.04	0	0
October 31	0.10	1.88	0	0
<b>M10 - Miller</b>				
October 4	0.29	1.31	0	0
October 17	0.28	2.33	0	0
October 31	0.39	2.39	0	0
<b>M16 - Best @ Barker</b>				
October 11	0.28	1.91	0	0
October 24	0.44	2.02	0	0
<b>M17 - TH Booster</b>				
October 4	0.32	1.45	0	0
October 17	0.24	1.35	0	0
October 31	0.55	2.14	0	0

# City of Mission Water Distribution System

Recent Water Quality Results

Updated: 2023-11-09 15:07



	Turbidity	Total Chlorine	Total Coliforms (counts)	E.coli (counts)
Units	NTU	mg/L	CFU/100mL	CFU/100mL
<b>M18 - Blueberry</b>				
October 4	0.47	1.59	0	0
October 17	0.34	2.45	0	0
October 31	0.39	2.56	0	0
<b>M19 - Ferndale @ Erikson</b>				
October 11	0.30	1.76	0	0
October 24	0.39	2.15	0	0
<b>M20 - DTR &amp; Cedar</b>				
October 4	0.44	2.48	0	0
October 17	0.36	2.69	0	0
October 31	1.33	2.60	0	0
<b>M21 - 11th &amp; Dunsmuir</b>				
October 11	0.08	1.90	0	0
October 24	0.12	1.98	0	0
<b>M22 - Tunbridge @ DTR</b>				
October 11	0.35	2.76	0	0
October 24	0.36	2.31	0	0
<b>M23 - 4th @ Alder</b>				
October 11	0.08	1.91	0	0
October 24	0.10	1.97	0	0
<b>M24 - Moffat</b>				
October 11	0.09	1.72	0	0
October 24	0.14	1.98	0	0
<b>M25 - 11th &amp; Grand</b>				
October 4	0.10	1.78	0	0
October 17	0.14	1.69	0	0
October 31	0.12	1.79	0	0
<b>M26 - Fennel</b>				
October 11	0.32	2.71	0	0
October 24	0.44	2.27	0	0
<b>M27 - McRae &amp; Hurd</b>				
October 11	0.07	1.85	0	0
October 24	0.13	1.92	0	0

Blank Cell = No Data Collected



# City of Mission Water Distribution System

Recent Water Quality Results

Updated: 2023-11-09 15:07



Parameter	Description	Acceptable Range
<b>Turbidity</b>	Suspended matter that interferes with the clarity of the water. While not a health concern itself, turbidity is an indicator of possible contamination.	There are no regulations for distribution system turbidity; water system operators aim for less than 1.0 NTU.
<b>Total Chlorine</b>	Used to monitor the level of disinfectant used to inactivate microorganisms such as bacteria and viruses.	There are no regulations for distribution system total chlorine; system operators aim to maintain a detectable residual. As long as there are no total coliforms, lower values are not a concern. Higher values are not deemed a health concern unless they exceed the World Health Organization's recommended limit of 5ppm.
<b>Total Coliforms</b>	A group of bacteria that generally do not cause human disease, but their presence in water may indicate possible contamination.	The BC Drinking Water Act stipulates that no more than 10% of samples during a 30-day period may be positive for Total Coliforms and that no single sample may contain more than 10 counts.
<b>E. Coli</b>	A member of the Total Coliform group and its presence in water indicates contamination.	The BC Drinking Water Act stipulates that no E.Coli should be detected in drinking water.

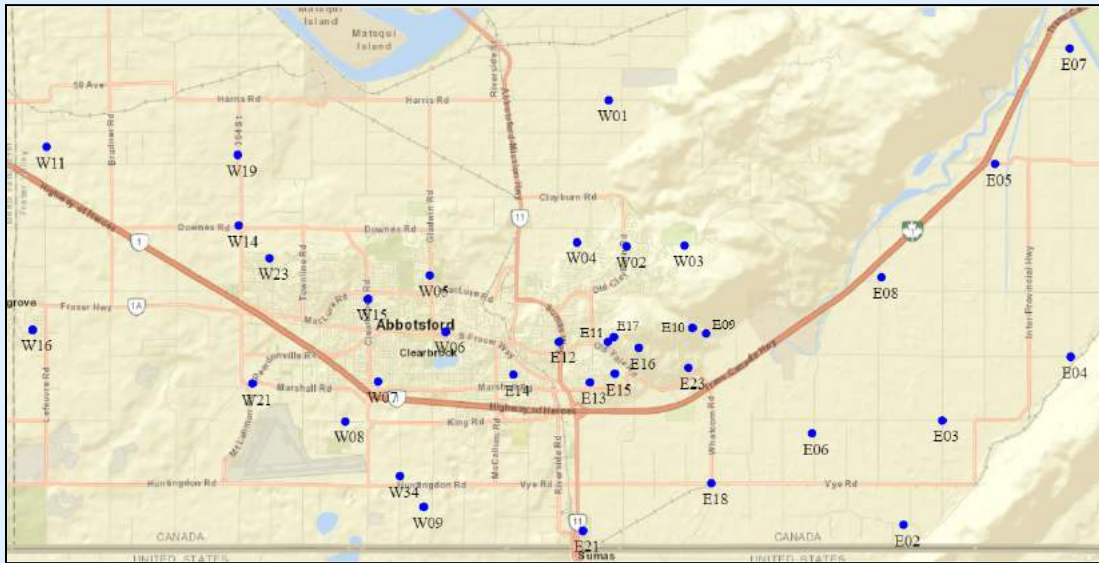
**Note: Turbidity and Total Chlorine are measured with field instruments. Result trends are used as indicators of significant water quality changes; specific values are not necessarily accurate.**

# City of Abbotsford Water Distribution System

Recent Water Quality Results

Updated: 2023-11-09 15:02

## Sample Locations



- Refer to following pages for results.
- Water quality parameter descriptions on last page.

### Week A

Southeast Route - E02, E07, E09, E10, E11, E12, E13, E14, E17, E18, W02, W03

Northwest Route - W01, W04, W05, W07, W11, W13, W15, W16, W19, W21, W23, W34

### Week B

Southeast Route - E07, E08, E09, E12, E13, E15, E16, E18, E21, E23, W02, W03

Northwest Route - W01, W04, W06, W07, W11, W13, W15, W16, W19, W21, W23, W34

Each week is tested biweekly.

### Questions?

City of Abbotsford Engineering

604-864-5511

[eng-info@abbotsford.ca](mailto:eng-info@abbotsford.ca)

# City of Abbotsford Water Distribution System

Recent Water Quality Results

Updated: 2023-11-09 15:02



	Turbidity	Total Chlorine	Total Coliforms (counts)	E.coli (counts)
Units	NTU	mg/L	CFU/100mL	CFU/100mL
<b>E02 - 310 Arnold Road</b>				
October 11	0.13	1.47	0	0
October 24	0.37	1.21	0	0
<b>E07 - 6230 Tolmie Road</b>				
October 4	0.18	0.55	0	0
October 11	0.20	0.67	0	0
October 17	0.23	0.70	0	0
October 24	0.18	0.30	0	0
October 31	0.17	0.47	0	0
<b>E08 - 3434 McDermott Road</b>				
October 4	0.31	1.10	0	0
October 17	0.26	0.90	0	0
October 31	0.15	1.64	0	0
<b>E09 - 36232 Lower Sumas Mountain Road</b>				
October 4	0.40	1.22	0	0
October 11	0.32	1.33	0	0
October 17	0.19	1.36	0	0
October 24	0.32	1.07	0	0
October 31	0.19	1.66	0	0
<b>E10 - 36101 Regal Parkway</b>				
October 11	0.15	1.76	0	0
October 24	0.26	1.60	0	0
<b>E11 - 2598 St. Moritz Way</b>				
October 11	0.13	1.79	0	0
October 24	0.24	1.63	0	0
<b>E12 - 2691 Beck Road</b>				
October 4	0.22	1.91	0	0
October 11	0.14	1.76	0	0
October 17	0.18	1.43	0	0
October 24	0.36	1.57	0	0
October 31	0.13	1.76	0	0
<b>E13 - 2087 McMillan Road</b>				
October 4	0.26	1.42	0	0
October 11	0.27	1.63	0	0
October 17	0.49	1.66	0	0
October 24	0.51	1.44	0	0

# City of Abbotsford Water Distribution System

Recent Water Quality Results

Updated: 2023-11-09 15:02



	Turbidity	Total Chlorine	Total Coliforms (counts)	E.coli (counts)
Units	NTU	mg/L	CFU/100mL	CFU/100mL
<b>E13 - 2087 McMillan Road</b>				
October 31	0.15	1.92	0	0
<b>E14 - 2211 Mouldstade Road</b>				
October 11	0.12	1.66	0	0
October 24	0.21	1.27	0	0
<b>E15 - 2215 Orchard Drive</b>				
October 4	0.24	1.65	0	0
October 17	0.12	1.74	0	0
October 31	0.24	2.15	0	0
<b>E16 - 2540 Eagle Mountain Drive</b>				
October 4	0.25	1.01	0	0
October 17	0.20	1.19	0	0
October 31	0.21	1.37	0	0
<b>E17 - 2720 St. Moritz Way</b>				
October 11	0.24	1.28	0	0
October 24	0.29	1.58	0	0
<b>E18 - 36321 Vye Road</b>				
October 4	0.29	1.56	0	0
October 11	0.23	1.52	0	0
October 17	0.25	1.46	0	0
October 24	0.39	1.43	0	0
October 31	0.16	1.88	0	0
<b>E21 - 34694 5th Avenue</b>				
October 4	0.28	1.40	0	0
October 17	0.21	0.95	0	0
October 31	0.17	1.48	0	0
<b>E23 - 36026 Village Knoll</b>				
October 4	0.24	1.24	0	0
October 17	0.16	1.54	0	0
October 31	0.13	1.85	0	0
<b>W01 - 35041 Harris Road</b>				
October 4	0.23	1.35	0	0
October 11	0.25	1.69	0	0
October 17	0.36	1.59	0	0
October 24	0.17	1.62	0	0
October 31	0.20	1.93	0	0

# City of Abbotsford Water Distribution System

Recent Water Quality Results

Updated: 2023-11-09 15:02



	Turbidity	Total Chlorine	Total Coliforms (counts)	E.coli (counts)
Units	NTU	mg/L	CFU/100mL	CFU/100mL
<b>W02 - 3836 Old Clayburn Road</b>				
October 4	0.25	1.48	0	0
October 11	0.21	1.83	0	0
October 17	0.12	1.66	0	0
October 24	0.11	1.83	0	0
October 31	0.11	2.02	0	0
<b>W03 - 35944 McKee Road</b>				
October 4	0.28	1.33	0	0
October 11	0.20	1.50	0	0
October 17	0.11	1.80	0	0
October 24	0.45	1.22	0	0
October 31	0.17	1.70	0	0
<b>W04 - 34638 Bateman Road</b>				
October 4	0.35	1.34	0	0
October 11	0.19	1.62	0	0
October 17	0.37	1.26	0	0
October 24	0.20	1.18	0	0
October 31	0.22	1.83	0	0
<b>W05 - 3315 Gladwin Road</b>				
October 11	0.17	1.74	0	0
October 24	0.16	1.87	0	0
<b>W06 - 32961 South Fraser Way</b>				
October 4	0.20	1.52	0	0
October 17	NT	NT		
October 31	0.42	2.13	0	0
<b>W07 - 32111 Joyce Avenue</b>				
October 4	0.45	1.36	0	0
October 11	0.22	1.35	0	0
October 17	0.34	0.82	0	0
October 24	0.17	1.29	0	0
October 31	0.23	2.08	0	0
<b>W11 - 5030 Lefeuve Road</b>				
October 4	0.31	1.09	0	0
October 11	0.27	1.24	0	0
October 17	0.24	1.38	0	0
October 24	0.12	1.00	0	0
October 31	0.22	1.76	0	0

# City of Abbotsford Water Distribution System

Recent Water Quality Results

Updated: 2023-11-09 15:02



	Turbidity	Total Chlorine	Total Coliforms (counts)	E.coli (counts)
Units	NTU	mg/L	CFU/100mL	CFU/100mL
<b>W13 - 7942 Bradner Road</b>				
October 4	0.29	1.36	0	0
October 11	0.30	0.70	0	0
October 17	0.33	0.66	0	0
October 24	0.10	1.23	0	0
October 31	0.35	0.83	0	0
<b>W15 - 3154 Clearbrook Road</b>				
October 4	0.29	1.68	0	0
October 11	0.24	1.80	0	0
October 17	0.32	1.56	0	0
October 24	0.11	1.41	0	0
October 31	0.20	2.13	0	0
<b>W16 - 27875 Swensson Avenue</b>				
October 4	0.33	1.15	0	0
October 11	0.22	1.41	0	0
October 17	0.30	1.34	0	0
October 24	0.11	1.06	0	0
October 31	0.16	1.72	0	0
<b>W19 - 4945 Mt. Lehman Road</b>				
October 4	0.33	1.81	0	0
October 11	0.33	1.77	0	0
October 17	0.27	1.44	0	0
October 24	0.18	1.72	0	0
October 31	0.35	1.85	0	0
<b>W21 - 2059 Peardonville Road</b>				
October 4	0.32	1.23	0	0
October 11	0.25	1.04	0	0
October 17	0.31	0.73	0	0
October 24	0.30	1.08	0	0
October 31	0.13	1.35	0	0
<b>W23 - 3612 Blue Jay Street</b>				
October 4	0.34	1.53	0	0
October 11	0.20	1.86	0	0
October 17	0.27	1.93	0	0
October 24	0.12	1.34	0	0
October 31	0.31	2.18	0	0

# City of Abbotsford Water Distribution System

Recent Water Quality Results

Updated: 2023-11-09 15:02



	Turbidity	Total Chlorine	Total Coliforms (counts)	E.coli (counts)
Units	NTU	mg/L	CFU/100mL	CFU/100mL
<b>W34 - 926 Columbia Street</b>				
October 4	0.35	1.14	0	0
October 11	0.22	1.45	0	0
October 17	0.30	0.83	0	0
October 24	0.10	1.24	0	0
October 31	0.21	1.45	0	0
<b>Blank Cell = No Data Collected</b>				

# City of Abbotsford Water Distribution System

Recent Water Quality Results

Updated: 2023-11-09 15:02



Parameter	Description	Acceptable Range
<b>Turbidity</b>	Suspended matter that interferes with the clarity of the water. While not a health concern itself, turbidity is an indicator of possible contamination.	There are no regulations for distribution system turbidity; water system operators aim for less than 1.0 NTU.
<b>Total Chlorine</b>	Used to monitor the level of disinfectant used to inactivate microorganisms such as bacteria and viruses.	There are no regulations for distribution system total chlorine; system operators aim to maintain a detectable residual. As long as there are no total coliforms, lower values are not a concern. Higher values are not deemed a health concern unless they exceed the World Health Organization's recommended limit of 5ppm.
<b>Total Coliforms</b>	A group of bacteria that generally do not cause human disease, but their presence in water may indicate possible contamination.	The BC Drinking Water Act stipulates that no more than 10% of samples during a 30-day period may be positive for Total Coliforms and that no single sample may contain more than 10 counts.
<b>E. Coli</b>	A member of the Total Coliform group and its presence in water indicates contamination.	The BC Drinking Water Act stipulates that no E.Coli should be detected in drinking water.

**Note: Turbidity and Total Chlorine are measured with field instruments. Result trends are used as indicators of significant water quality changes; specific values are not necessarily accurate.**

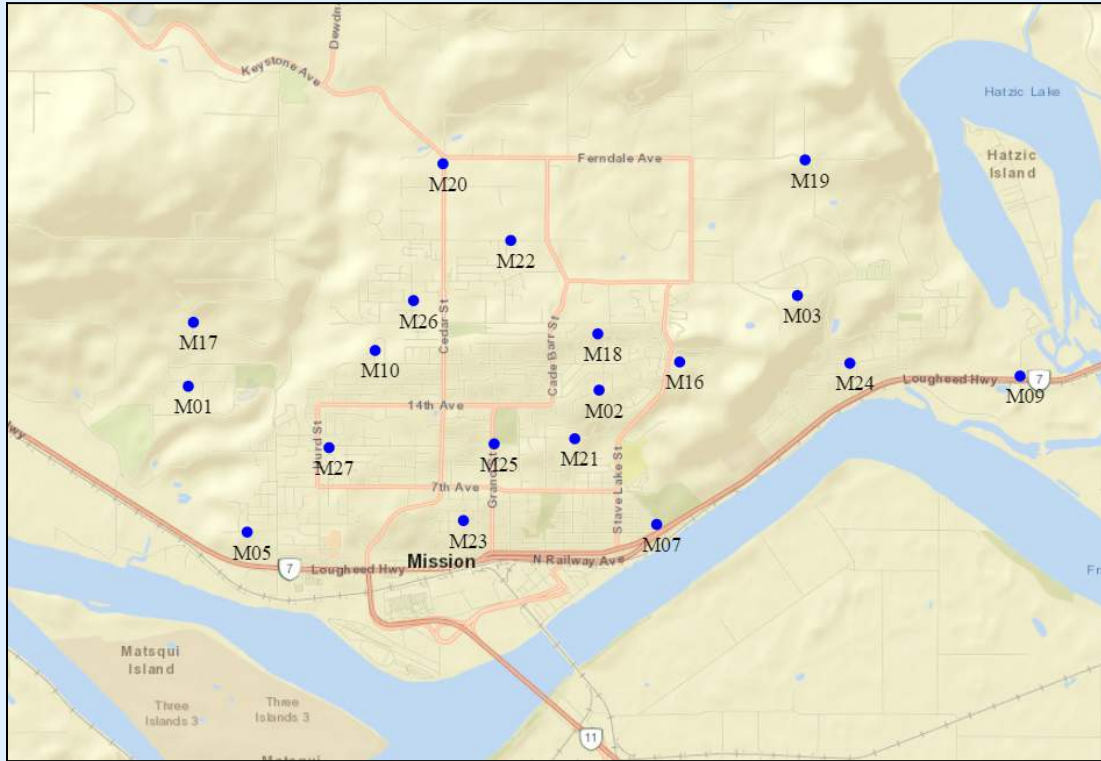


# City of Mission Water Distribution System

Recent Water Quality Results

Updated: 2023-12-08 16:33

## Sample Locations



- Refer to following pages for results.
- Water quality parameter descriptions on last page.

Route A - M1, M16, M19, M21, M22, M23, M24, M26, M27

Route B - M2, M3, M4, M5, M7, M9, M17, M18, M20, M25

Each route is tested biweekly.

### Questions?

District of Mission Public Works

604-820-3769

# City of Mission Water Distribution System

Recent Water Quality Results

Updated: 2023-12-08 16:33



	Turbidity	Total Chlorine	Total Coliforms (counts)	E.coli (counts)
Units	NTU	mg/L	CFU/100mL	CFU/100mL
<b>M01 - Israel</b>				
November 7	0.39	1.90	0	0
November 21	0.49	2.34	0	0
<b>M02 - Balsam</b>				
November 15	0.20	2.12	0	0
November 28	0.42	1.81	0	0
<b>M03 - Penner</b>				
November 15	0.41	2.37	0	0
November 28	0.64	1.87	0	0
<b>M05 - Hillcrest</b>				
November 15	0.15	1.82	0	0
November 28	0.12	1.84	0	0
<b>M07 - 4th &amp; Mary</b>				
November 15	0.11	1.85	0	0
November 28	0.08	2.06	0	0
<b>M09 - Shook</b>				
November 7	0.09	2.00	0	0
November 15	0.26	1.94	0	0
November 21	0.15	1.86	0	0
November 28	0.24	2.09	0	0
<b>M10 - Miller</b>				
November 15	0.54	1.64	0	0
November 28	0.35	1.62	0	0
<b>M16 - Best @ Barker</b>				
November 7	0.50	2.05	0	0
November 21	0.40	1.95	0	0
<b>M17 - TH Booster</b>				
November 15	0.48	2.17	0	0
November 28	0.38	1.65	0	0
<b>M18 - Blueberry</b>				
November 15	0.62	2.64	0	0
November 28	0.41	1.83	0	0
<b>M19 - Ferndale @ Erikson</b>				
November 7	0.35	2.27	0	0
November 21	0.33	2.29	0	0

# City of Mission Water Distribution System

Recent Water Quality Results

Updated: 2023-12-08 16:33



	Turbidity	Total Chlorine	Total Coliforms (counts)	E.coli (counts)
Units	NTU	mg/L	CFU/100mL	CFU/100mL
<b>M20 - DTR &amp; Cedar</b>				
November 15	0.50	2.74	0	0
November 28	0.42	2.28	0	0
<b>M21 - 11th &amp; Dunsmuir</b>				
November 7	0.18	1.89	0	0
November 21	0.11	1.86	0	0
<b>M22 - Tunbridge @ DTR</b>				
November 7	0.38	2.54	0	0
November 21	0.36	2.54	0	0
<b>M23 - 4th @ Alder</b>				
November 7	0.12	1.91	0	0
November 21	0.17	1.88	0	0
<b>M24 - Moffat</b>				
November 7	0.09	1.90	0	0
November 21	0.10	1.87	0	0
<b>M25 - 11th &amp; Grand</b>				
November 15	0.09	1.81	0	0
November 28	0.11	1.95	0	0
<b>M26 - Fennel</b>				
November 7	0.39	2.60	0	0
November 21	0.41	2.58	0	0
<b>M27 - McRae &amp; Hurd</b>				
November 7	0.17	1.84	0	0
November 21	0.15	1.84	0	0
<b>Blank Cell = No Data Collected</b>				

# City of Mission Water Distribution System

Recent Water Quality Results

Updated: 2023-12-08 16:33



Parameter	Description	Acceptable Range
<b>Turbidity</b>	Suspended matter that interferes with the clarity of the water. While not a health concern itself, turbidity is an indicator of possible contamination.	There are no regulations for distribution system turbidity; water system operators aim for less than 1.0 NTU.
<b>Total Chlorine</b>	Used to monitor the level of disinfectant used to inactivate microorganisms such as bacteria and viruses.	There are no regulations for distribution system total chlorine; system operators aim to maintain a detectable residual. As long as there are no total coliforms, lower values are not a concern. Higher values are not deemed a health concern unless they exceed the World Health Organization's recommended limit of 5ppm.
<b>Total Coliforms</b>	A group of bacteria that generally do not cause human disease, but their presence in water may indicate possible contamination.	The BC Drinking Water Act stipulates that no more than 10% of samples during a 30-day period may be positive for Total Coliforms and that no single sample may contain more than 10 counts.
<b>E. Coli</b>	A member of the Total Coliform group and its presence in water indicates contamination.	The BC Drinking Water Act stipulates that no E.Coli should be detected in drinking water.

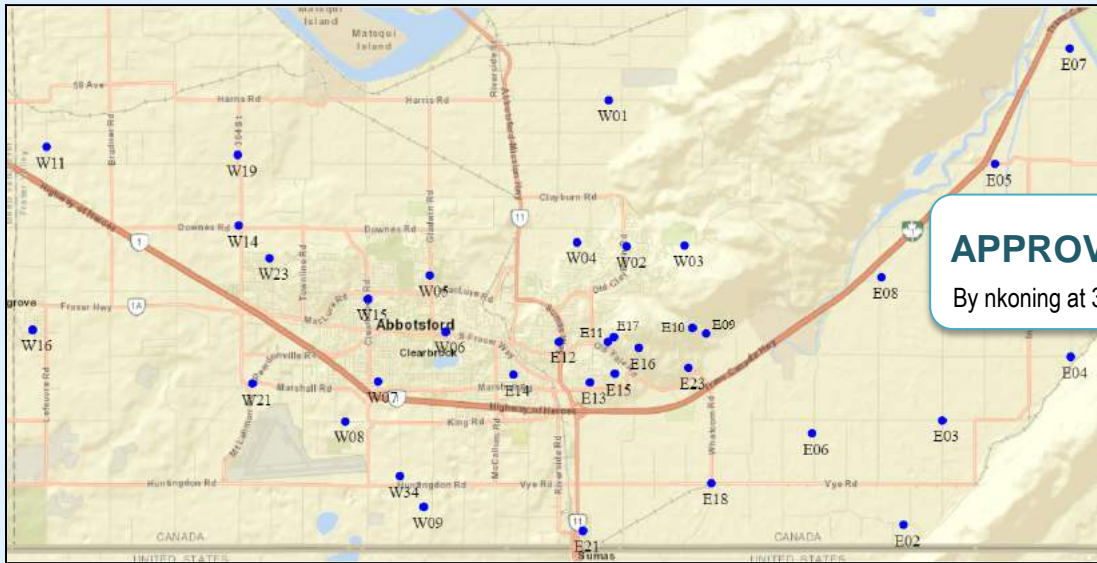
**Note: Turbidity and Total Chlorine are measured with field instruments. Result trends are used as indicators of significant water quality changes; specific values are not necessarily accurate.**

APPROVED

By Ifuratian at 3:38 pm, Jan 09, 2024



### Sample Locations



- Refer to following pages for results.
- Water quality parameter descriptions on last page.

APPROVED

By nkoning at 3:32 pm, Jan 18, 2024



#### Week A

Southeast Route - E02, E07, E09, E10, E11, E12, E13, E14, E17, E18, W02, W03

Northwest Route - W01, W04, W05, W07, W11, W13, W15, W16, W19, W21, W23, W34

#### Week B

Southeast Route - E07, E08, E09, E12, E13, E15, E16, E18, E21, E23, W02, W03

Northwest Route - W01, W04, W06, W07, W11, W13, W15, W16, W19, W21, W23, W34

Each week is tested biweekly.

#### Questions?

City of Abbotsford Engineering

604-864-5511

eng-info@abbotsford.ca

# City of Abbotsford Water Distribution System

Recent Water Quality Results

Updated: 2023-12-08 09:42



	Turbidity	Total Chlorine	Total Coliforms (counts)	E.coli (counts)
Units	NTU	mg/L	CFU/100mL	CFU/100mL
<b>E02 - 310 Arnold Road</b>				
November 7	0.46	1.38	0	0
November 21	0.22	1.64	0	0
<b>E07 - 6230 Tolmie Road</b>				
November 7	0.09	1.02	0	0
November 15	0.71	0.76	0	0
November 21	0.11	0.81	0	0
November 28	0.16	1.03	0	0
<b>E08 - 3434 McDermott Road</b>				
November 15	0.52	1.26	0	0
November 28	0.09	1.10	0	0
<b>E09 - 36232 Lower Sumas Mountain Road</b>				
November 7	0.17	1.28	0	0
November 15	0.28	1.26	0	0
November 21	0.29	1.75	0	0
November 28	0.22	1.89	0	0
<b>E10 - 36101 Regal Parkway</b>				
November 7	0.17	1.46	0	0
November 21	0.22	1.86	0	0
<b>E11 - 2598 St. Moritz Way</b>				
November 7	0.10	1.47	0	0
November 21	0.13	1.54	0	0
<b>E12 - 2691 Beck Road</b>				
November 7	0.16	1.03	0	0
November 15	1.23	1.53	0	0
November 21	0.23	1.83	0	0
November 28	0.32	1.78	0	0
<b>E13 - 2087 McMillan Road</b>				
November 7	0.27	1.53	0	0
November 15	0.74	1.55	0	0
November 21	0.14	1.77	0	0
November 28	0.10	1.91	0	0
<b>E14 - 2211 Mouldstade Road</b>				
November 7	0.30	1.34	0	0
November 21	0.39	1.38	0	0

# City of Abbotsford Water Distribution System

Recent Water Quality Results

Updated: 2023-12-08 09:42



	Turbidity	Total Chlorine	Total Coliforms (counts)	E.coli (counts)
Units	NTU	mg/L	CFU/100mL	CFU/100mL
<b>E15 - 2215 Orchard Drive</b>				
November 15	0.65	1.75	0	0
November 28	0.13	1.83	0	0
<b>E16 - 2540 Eagle Mountain Drive</b>				
November 15	0.41	1.19	0	0
November 28	0.15	2.02	0	0
<b>E17 - 2720 St. Moritz Way</b>				
November 7	0.12	1.16	0	0
November 21	0.16	1.53	0	0
<b>E18 - 36321 Vye Road</b>				
November 7	0.39	1.20	0	0
November 15	0.48	1.52	0	0
November 21	0.43	1.71	0	0
November 28	0.10	1.88	0	0
<b>E21 - 34694 5th Avenue</b>				
November 15	0.80	1.56	0	0
November 28	0.17	1.46	0	0
<b>E23 - 36026 Village Knoll</b>				
November 15	0.44	1.41	0	0
November 28	0.17	1.98	0	0
<b>W01 - 35041 Harris Road</b>				
November 7	0.22	1.43	0	0
November 15	0.14	1.69	0	0
November 21	0.40	1.66	0	0
November 28	0.30	1.84	0	0
<b>W02 - 3836 Old Clayburn Road</b>				
November 7	0.39	0.75	0	0
November 15	0.41	1.45	0	0
November 21	0.23	1.85	0	0
November 28	0.09	1.86	0	0
<b>W03 - 35944 McKee Road</b>				
November 7	0.33	1.71	0	0
November 15	0.27	1.67	0	0
November 21	0.21	1.90	0	0
November 28	0.11	1.98	0	0

# City of Abbotsford Water Distribution System

Recent Water Quality Results

Updated: 2023-12-08 09:42



	Turbidity	Total Chlorine	Total Coliforms (counts)	E.coli (counts)
Units	NTU	mg/L	CFU/100mL	CFU/100mL
<b>W04 - 34638 Bateman Road</b>				
November 7	0.21	1.37	0	0
November 15	0.07	1.32	0	0
November 21	0.79	1.31	0	0
November 28	0.37	1.98	0	0
<b>W05 - 3315 Gladwin Road</b>				
November 7	0.25	1.85	0	0
November 21	0.42	1.78	0	0
<b>W06 - 32961 South Fraser Way</b>				
November 15	0.07	1.55	0	0
November 28	0.25	2.08	0	0
<b>W07 - 32111 Joyce Avenue</b>				
November 7	0.24	1.32	0	0
November 15	0.19	1.49	0	0
November 21	0.30	1.40	0	0
November 28	0.38	1.64	0	0
<b>W11 - 5030 Lefeuve Road</b>				
November 7	0.23	1.02	0	0
November 15	0.11	1.18	0	0
November 21	0.20	1.15	0	0
November 28	0.54	1.60	0	0
<b>W13 - 7942 Bradner Road</b>				
November 7	0.20	0.82	0	0
November 15	0.16	0.80	0	0
November 21	0.29	0.89	0	0
November 28	0.25	1.06	0	0
<b>W15 - 3154 Clearbrook Road</b>				
November 7	0.23	1.77	0	0
November 15	0.06	1.57	0	0
November 21	0.39	1.65	0	0
November 28	0.25	2.01	0	0
<b>W16 - 27875 Swensson Avenue</b>				
November 7	0.23	1.39	0	0
November 15	0.13	1.29	0	0
November 21	0.22	1.23	0	0
November 28	0.29	1.89	0	0



# City of Abbotsford Water Distribution System

Recent Water Quality Results

Updated: 2023-12-08 09:42



	Turbidity	Total Chlorine	Total Coliforms (counts)	E.coli (counts)
Units	NTU	mg/L	CFU/100mL	CFU/100mL
<b>W19 - 4945 Mt. Lehman Road</b>				
November 7	0.27	1.52	0	0
November 15	0.20	1.71	0	0
November 21	0.28	1.75	0	0
November 28	0.36	1.83	0	0
<b>W21 - 2059 Peardonville Road</b>				
November 7	0.32	1.33	0	0
November 15	0.19	1.30	0	0
November 21	0.32	1.27	0	0
November 28	0.90	1.60	0	0
<b>W23 - 3612 Blue Jay Street</b>				
November 7	0.22	1.43	0	0
November 15	0.14	1.46	0	0
November 21	0.20	1.63	0	0
November 28	0.26	2.17	0	0
<b>W34 - 926 Columbia Street</b>				
November 7	0.31	1.24	0	0
November 15	0.18	1.51	0	0
November 21	0.80	1.43	0	0
November 28	0.52	1.54	0	0
<b>Blank Cell = No Data Collected</b>				

# City of Abbotsford Water Distribution System

Recent Water Quality Results

Updated: 2023-12-08 09:42



Parameter	Description	Acceptable Range
<b>Turbidity</b>	Suspended matter that interferes with the clarity of the water. While not a health concern itself, turbidity is an indicator of possible contamination.	There are no regulations for distribution system turbidity; water system operators aim for less than 1.0 NTU.
<b>Total Chlorine</b>	Used to monitor the level of disinfectant used to inactivate microorganisms such as bacteria and viruses.	There are no regulations for distribution system total chlorine; system operators aim to maintain a detectable residual. As long as there are no total coliforms, lower values are not a concern. Higher values are not deemed a health concern unless they exceed the World Health Organization's recommended limit of 5ppm.
<b>Total Coliforms</b>	A group of bacteria that generally do not cause human disease, but their presence in water may indicate possible contamination.	The BC Drinking Water Act stipulates that no more than 10% of samples during a 30-day period may be positive for Total Coliforms and that no single sample may contain more than 10 counts.
<b>E. Coli</b>	A member of the Total Coliform group and its presence in water indicates contamination.	The BC Drinking Water Act stipulates that no E.Coli should be detected in drinking water.

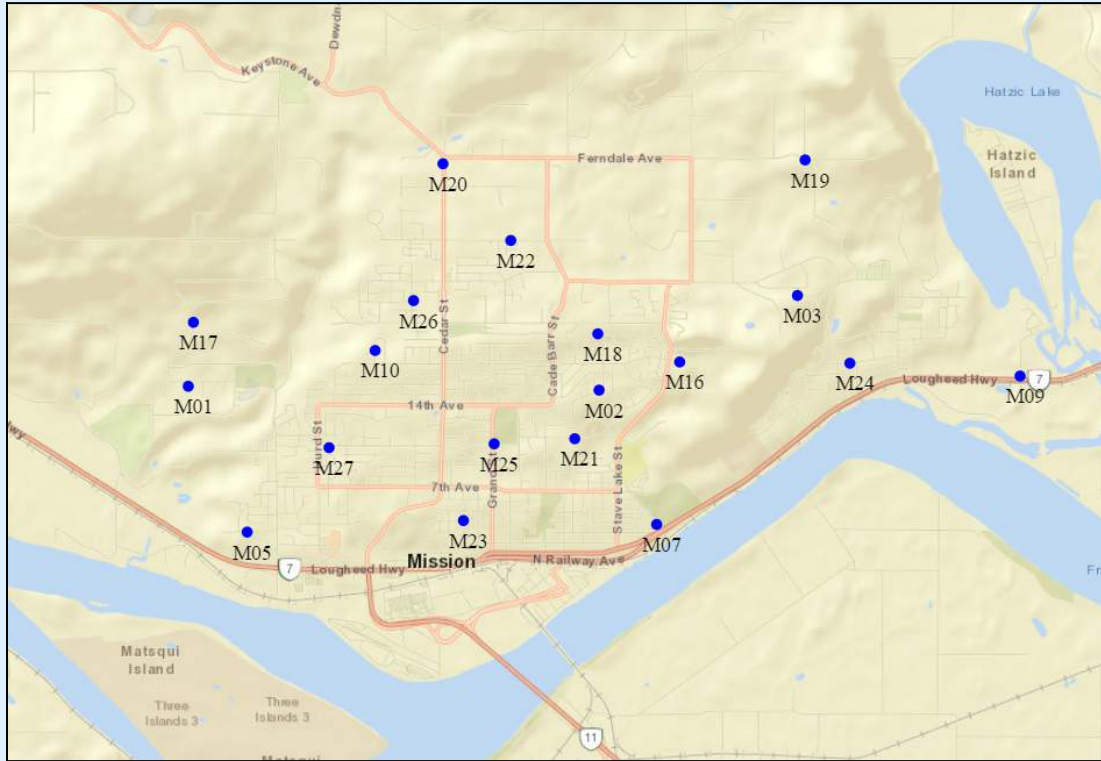
**Note: Turbidity and Total Chlorine are measured with field instruments. Result trends are used as indicators of significant water quality changes; specific values are not necessarily accurate.**

# City of Mission Water Distribution System

Recent Water Quality Results

Updated: 2024-01-09 09:25

## Sample Locations



- Refer to following pages for results.
- Water quality parameter descriptions on last page.

Route A - M1, M16, M19, M21, M22, M23, M24, M26, M27

Route B - M2, M3, M4, M5, M7, M9, M17, M18, M20, M25

Each route is tested biweekly.

### Questions?

District of Mission Public Works

604-820-3769

# City of Mission Water Distribution System

Recent Water Quality Results

Updated: 2024-01-09 09:25



	Turbidity	Total Chlorine	Total Coliforms (counts)	E.coli (counts)
Units	NTU	mg/L	CFU/100mL	CFU/100mL
<b>M01 - Israel</b>				
December 5	0.28	1.82	0	0
December 19	0.34	1.69	0	0
<b>M02 - Balsam</b>				
December 12	0.26	1.96	0	0
December 27	0.28	1.67	0	0
<b>M03 - Penner</b>				
December 12	0.42	2.28	0	0
December 27	0.36	1.84	0	0
<b>M05 - Hillcrest</b>				
December 12	0.29	1.74	0	0
December 27	0.22	1.74	0	0
<b>M07 - 4th &amp; Mary</b>				
December 12	0.07	1.88	0	0
December 27	0.17	1.83	0	0
<b>M09 - Shook</b>				
December 5	0.69	2.41	0	0
December 12	0.10	1.75	0	0
December 19	0.08	2.11	0	0
December 27	0.11	1.91	0	0
<b>M10 - Miller</b>				
December 12	0.71	1.89	0	0
December 27	0.34	1.44	0	0
<b>M16 - Best @ Barker</b>				
December 5	0.58	2.21	0	0
December 19	0.34	1.78	0	0
<b>M17 - TH Booster</b>				
December 12	0.33	1.73	0	0
December 27	0.25	1.62	0	0
<b>M18 - Blueberry</b>				
December 12	0.67	1.89	0	0
December 27	0.33	1.96	0	0
<b>M19 - Ferndale @ Erikson</b>				
December 5	0.31	2.11	0	0
December 19	0.32	2.21	0	0

# City of Mission Water Distribution System

Recent Water Quality Results

Updated: 2024-01-09 09:25



	Turbidity	Total Chlorine	Total Coliforms (counts)	E.coli (counts)
Units	NTU	mg/L	CFU/100mL	CFU/100mL
<b>M20 - DTR &amp; Cedar</b>				
December 12	0.38	2.59	0	0
December 27	0.78	2.14	0	0
<b>M21 - 11th &amp; Dunsmuir</b>				
December 5	0.78	2.67	1.0*	0
December 7			0	0
December 8			0	0
December 19	0.07	2.05	0	0
<b>M22 - Tunbridge @ DTR</b>				
December 5	0.44	2.66	0	0
December 19	0.34	2.30	0	0
<b>M23 - 4th @ Alder</b>				
December 5	0.61	2.56	0	0
December 19	0.10	2.11	0	0
<b>M24 - Moffat</b>				
December 5	0.63	2.54	0	0
December 19	0.11	2.09	0	0
<b>M25 - 11th &amp; Grand</b>				
December 12	<0.10	1.70	0	0
December 27	0.16	1.91	0	0
<b>M26 - Fennel</b>				
December 5	0.65	2.71	0	0
December 19	0.78	2.49	0	0
<b>M27 - McRae &amp; Hurd</b>				
December 5	0.55	2.53	0	0
December 19	0.19	2.00	0	0
<b>Blank Cell = No Data Collected</b>				

# City of Mission Water Distribution System

Recent Water Quality Results

Updated: 2024-01-09 09:25

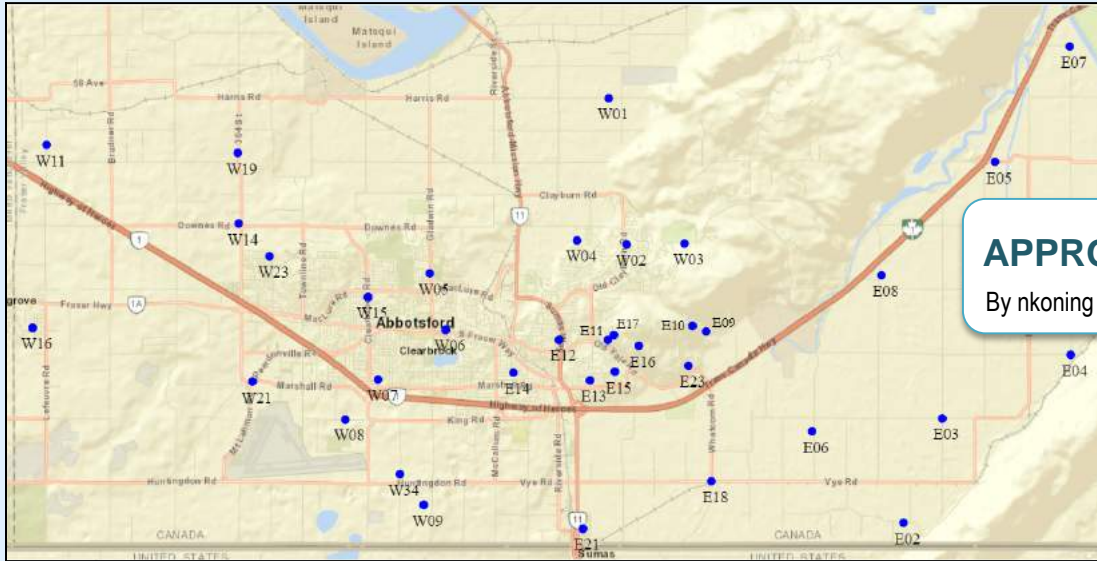


Parameter	Description	Acceptable Range
<b>Turbidity</b>	Suspended matter that interferes with the clarity of the water. While not a health concern itself, turbidity is an indicator of possible contamination.	There are no regulations for distribution system turbidity; water system operators aim for less than 1.0 NTU.
<b>Total Chlorine</b>	Used to monitor the level of disinfectant used to inactivate microorganisms such as bacteria and viruses.	There are no regulations for distribution system total chlorine; system operators aim to maintain a detectable residual. As long as there are no total coliforms, lower values are not a concern. Higher values are not deemed a health concern unless they exceed the World Health Organization's recommended limit of 5ppm.
<b>Total Coliforms</b>	A group of bacteria that generally do not cause human disease, but their presence in water may indicate possible contamination.	The BC Drinking Water Act stipulates that no more than 10% of samples during a 30-day period may be positive for Total Coliforms and that no single sample may contain more than 10 counts.
<b>E. Coli</b>	A member of the Total Coliform group and its presence in water indicates contamination.	The BC Drinking Water Act stipulates that no E.Coli should be detected in drinking water.

**Note: Turbidity and Total Chlorine are measured with field instruments. Result trends are used as indicators of significant water quality changes; specific values are not necessarily accurate.**

**\*Low TC Count detected. FH is informed of all adverse results.**

### Sample Locations



- Refer to following pages for results.
- Water quality parameter descriptions on last page.

#### Week A

Southeast Route - E02, E07, E09, E10, E11, E12, E13, E14, E17, E18, W02, W03

Northwest Route - W01, W04, W05, W07, W11, W13, W15, W16, W19, W21, W23, W34

#### Week B

Southeast Route - E07, E08, E09, E12, E13, E15, E16, E18, E21, E23, W02, W03

Northwest Route - W01, W04, W06, W07, W11, W13, W15, W16, W19, W21, W23, W34

Each week is tested biweekly.

#### Questions?

City of Abbotsford Engineering

604-864-5511

eng-info@abbotsford.ca

# City of Abbotsford Water Distribution System

Recent Water Quality Results

Updated: 2024-01-09 09:22



	Turbidity	Total Chlorine	Total Coliforms (counts)	E.coli (counts)
Units	NTU	mg/L	CFU/100mL	CFU/100mL
<b>E02 - 310 Arnold Road</b>				
December 5	0.12	1.60	0	0
December 19	0.57	1.63	0	0
<b>E07 - 6230 Tolmie Road</b>				
December 5	0.11	1.13	0	0
December 12	0.31	0.98	0	0
December 19	0.42	0.84	0	0
December 27	0.17	0.84	0	0
<b>E08 - 3434 McDermott Road</b>				
December 12	0.30	1.28	0	0
December 27	0.22	1.42	0	0
<b>E09 - 36232 Lower Sumas Mountain Road</b>				
December 5	0.35	1.66	0	0
December 12	0.23	1.84	0	0
December 19	0.65	1.85	0	0
December 27	0.24	1.72	0	0
<b>E10 - 36101 Regal Parkway</b>				
December 5	0.10	1.75	0	0
December 19	0.68	1.89	0	0
<b>E11 - 2598 St. Moritz Way</b>				
December 5	<0.10	1.62	0	0
December 19	0.43	1.71	0	0
<b>E12 - 2691 Beck Road</b>				
December 5	0.41	1.76	0	0
December 12	0.49	1.85	0	0
December 19	0.77	1.80	0	0
December 27	0.25	1.76	0	0
<b>E13 - 2087 McMillan Road</b>				
December 5	<0.10	1.73	0	0
December 12	0.25	1.76	0	0
December 19	0.47	1.20	0	0
December 27	0.24	1.78	0	0
<b>E14 - 2211 Mouldstade Road</b>				
December 5	<0.10	1.44	0	0
December 19	0.29	1.29	0	0



# City of Abbotsford Water Distribution System

Recent Water Quality Results

Updated: 2024-01-09 09:22



	Turbidity	Total Chlorine	Total Coliforms (counts)	E.coli (counts)
Units	NTU	mg/L	CFU/100mL	CFU/100mL
<b>E15 - 2215 Orchard Drive</b>				
December 12	0.38	1.88	0	0
December 27	0.37	1.91	0	0
<b>E16 - 2540 Eagle Mountain Drive</b>				
December 12	0.33	1.44	0	0
December 27	0.36	1.44	0	0
<b>E17 - 2720 St. Moritz Way</b>				
December 5	<0.10	0.70	0	0
December 19	0.69	1.60	0	0
<b>E18 - 36321 Vye Road</b>				
December 5	0.29	1.64	0	0
December 12	0.65	1.64	0	0
December 19	0.30	1.67	0	0
December 27	0.30	1.67	0	0
<b>E21 - 34694 5th Avenue</b>				
December 12	0.72	1.34	0	0
December 27	0.40	1.44	0	0
<b>E23 - 36026 Village Knoll</b>				
December 12	0.19	1.74	0	0
December 27	0.19	1.80	0	0
<b>W01 - 35041 Harris Road</b>				
December 5	0.73	1.70	0	0
December 12	0.25	1.83	0	0
December 19	0.43	1.69	0	0
December 27	0.19	1.83	0	0
<b>W02 - 3836 Old Clayburn Road</b>				
December 5	<0.10	1.71	0	0
December 12	0.40	1.91	0	0
December 19	0.54	1.71	0	0
December 27	0.28	2.00	0	0
<b>W03 - 35944 McKee Road</b>				
December 5	<0.10	1.70	0	0
December 12	0.34	1.74	0	0
December 19	0.47	1.74	0	0
December 27	0.24	1.63	0	0

# City of Abbotsford Water Distribution System

Recent Water Quality Results

Updated: 2024-01-09 09:22



	Turbidity	Total Chlorine	Total Coliforms (counts)	E.coli (counts)
Units	NTU	mg/L	CFU/100mL	CFU/100mL
<b>W04 - 34638 Bateman Road</b>				
December 5	<0.10	1.67	0	0
December 12	0.26	1.77	0	0
December 19	0.67	1.25	0	0
December 27	0.41	1.79	0	0
<b>W05 - 3315 Gladwin Road</b>				
December 5	0.95	2.62	0	0
December 19	0.71	2.12	0	0
<b>W06 - 32961 South Fraser Way</b>				
December 12	0.22	1.87	0	0
December 27	0.40	1.87	0	0
<b>W07 - 32111 Joyce Avenue</b>				
December 5	0.22	1.64	0	0
December 12	0.22	1.76	0	0
December 19	0.56	1.16	0	0
December 27	0.29	1.59	0	0
<b>W11 - 5030 Lefeuve Road</b>				
December 5	<0.10	1.54	0	0
December 12	0.22	1.60	0	0
December 19	0.73	1.34	0	0
December 27	0.16	1.63	0	0
<b>W13 - 7942 Bradner Road</b>				
December 5	<0.10	1.09	0	0
December 12	0.30	1.22	0	0
December 19	0.78	1.74	0	0
December 27	0.17	1.13	0	0
<b>W15 - 3154 Clearbrook Road</b>				
December 5	0.31	1.87	0	0
December 12	0.19	1.87	0	0
December 19	0.29	1.84	0	0
December 27	0.30	1.90	0	0
<b>W16 - 27875 Swensson Avenue</b>				
December 5	0.50	1.62	0	0
December 12	0.14	1.61	0	0
December 19	0.63	1.42	0	0
December 27	0.35	1.57	0	0

# City of Abbotsford Water Distribution System

Recent Water Quality Results

Updated: 2024-01-09 09:22



	Turbidity	Total Chlorine	Total Coliforms (counts)	E.coli (counts)
Units	NTU	mg/L	CFU/100mL	CFU/100mL
<b>W19 - 4945 Mt. Lehman Road</b>				
December 5	0.34	2.67	0	0
December 12	0.24	1.85	0	0
December 19	0.55	1.88	0	0
December 27	0.43	1.74	0	0
<b>W21 - 2059 Peardonville Road</b>				
December 5	0.84	1.55	0	0
December 12	0.22	1.33	0	0
December 19	0.68	1.30	0	0
December 27	0.28	1.53	0	0
<b>W23 - 3612 Blue Jay Street</b>				
December 5	<0.10	1.79	0	0
December 12	0.20	1.82	0	0
December 19	0.47	1.75	0	0
December 27	0.15	1.90	0	0
<b>W34 - 926 Columbia Street</b>				
December 5	0.81	1.48	0	0
December 12	0.27	1.31	0	0
December 19	0.62	1.37	0	0
December 27	0.25	1.56	0	0
<b>Blank Cell = No Data Collected</b>				

# City of Abbotsford Water Distribution System

Recent Water Quality Results

Updated: 2024-01-09 09:22



Parameter	Description	Acceptable Range
<b>Turbidity</b>	Suspended matter that interferes with the clarity of the water. While not a health concern itself, turbidity is an indicator of possible contamination.	There are no regulations for distribution system turbidity; water system operators aim for less than 1.0 NTU.
<b>Total Chlorine</b>	Used to monitor the level of disinfectant used to inactivate microorganisms such as bacteria and viruses.	There are no regulations for distribution system total chlorine; system operators aim to maintain a detectable residual. As long as there are no total coliforms, lower values are not a concern. Higher values are not deemed a health concern unless they exceed the World Health Organization's recommended limit of 5ppm.
<b>Total Coliforms</b>	A group of bacteria that generally do not cause human disease, but their presence in water may indicate possible contamination.	The BC Drinking Water Act stipulates that no more than 10% of samples during a 30-day period may be positive for Total Coliforms and that no single sample may contain more than 10 counts.
<b>E. Coli</b>	A member of the Total Coliform group and its presence in water indicates contamination.	The BC Drinking Water Act stipulates that no E.Coli should be detected in drinking water.

**Note: Turbidity and Total Chlorine are measured with field instruments. Result trends are used as indicators of significant water quality changes; specific values are not necessarily accurate.**