

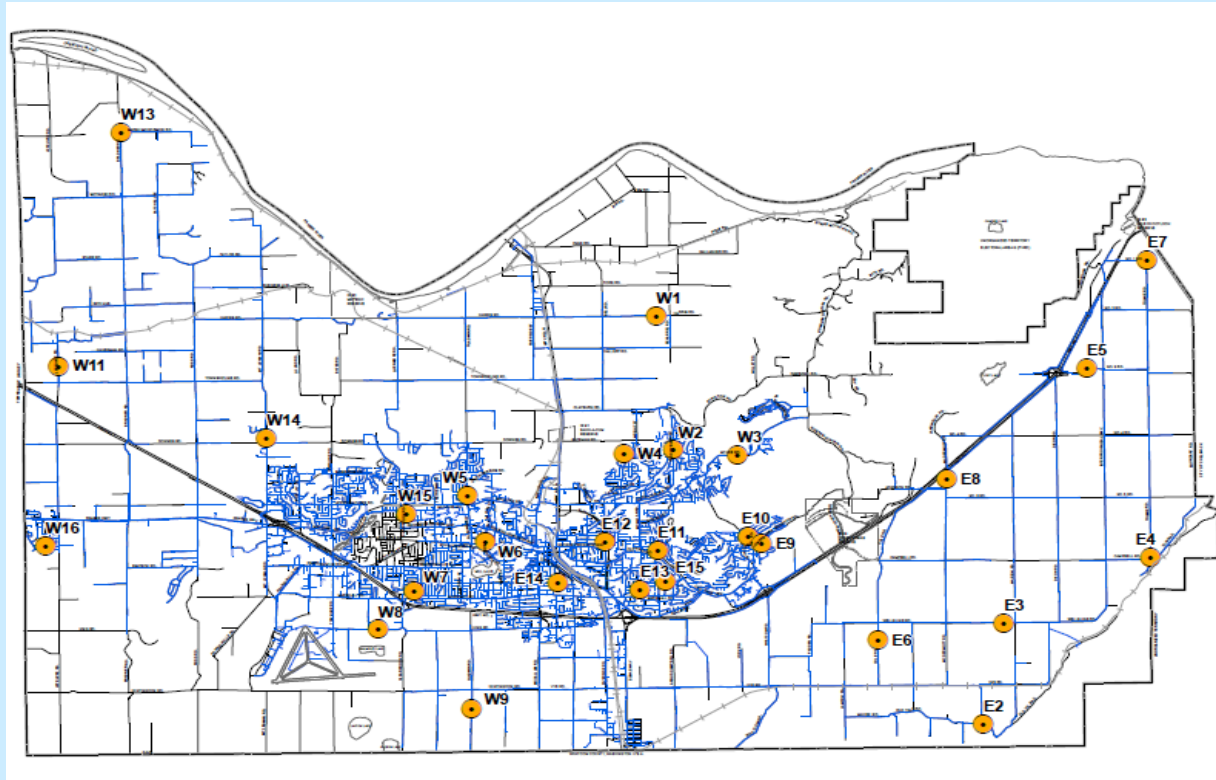
Abbotsford Water Distribution System

Recent Water Quality Results

Updated: 10-Jan-19



Sample Locations



- Refer to following pages for results.
- Water quality parameter descriptions on last page.

Questions?

Engineering
604-864-5514
eng-info@abbotsford.ca

Abbotsford Water Distribution System

Recent Water Quality Results

Updated: 10-Jan-19



E2	Turbidity	Total Chlorine	Total Coliforms	E.Coli
Units	NTU	ppm	counts	counts
Target	< 1.0	0.2 - 1.2	< 10	0
DEC				
DEC 4	0.19	1.15	0	0
DEC 11	0.23	1.17	0	0
DEC 18	0.14	1.07	0	0
DEC 27	0.22	1.30	0	0
NOV				
NOV 6	0.13	0.06	0	0
NOV 14	0.16	0.99	0	0
NOV 20	0.19	1.25	0	0
NOV 27	0.26	0.11	0	0
OCT				
OCT 2	0.11	0.93	0	0
OCT 10	0.16	1.25	0	0
OCT 16	0.08	1.26	0	0
OCT 23	0.24	1.18	0	0
OCT 30	0.19	0.69	0	0

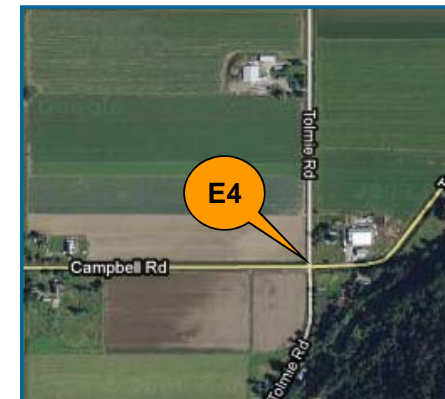
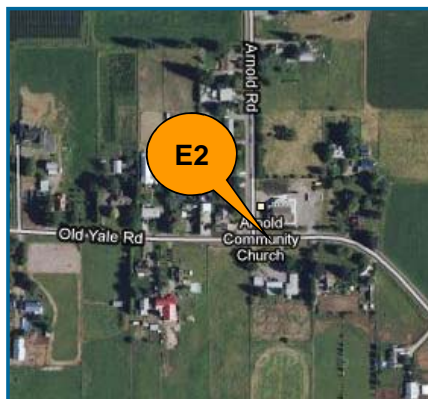
Blank Cell = No Data Collected

E3	Turbidity	Total Chlorine	Total Coliforms	E.Coli
Units	NTU	ppm	counts	counts
Target	< 1.0	0.2 - 1.2	< 10	0
DEC				
DEC 4	0.17	0.77	0	0
DEC 11	0.21	1.00	0	0
DEC 18	0.18	1.05	0	0
DEC 27	0.21	0.91	0	0
NOV				
NOV 6	0.21	0.15	0	0
NOV 14	0.14	1.21	0	0
NOV 20	0.15	0.79	0	0
NOV 27	0.23	0.18	0	0
OCT				
OCT 2	0.10	0.83	0	0
OCT 10	0.13	1.17	0	0
OCT 16	0.14	1.21	0	0
OCT 23	0.26	1.26	0	0
OCT 30	0.20	0.82	0	0

Blank Cell = No Data Collected

E4	Turbidity	Total Chlorine	Total Coliforms	E.Coli
Units	NTU	ppm	counts	counts
Target	< 1.0	0.2 - 1.2	< 10	0
DEC				
DEC 4	0.15	0.59	0	0
DEC 11	0.20	1.05	0	0
DEC 18	0.27	1.02	0	0
DEC 27	0.22	0.78	0	0
NOV				
NOV 6	0.14	0.14	0	0
NOV 14	0.19	0.73	0	0
NOV 20	0.14	1.06	0	0
NOV 27	0.13	0.61	0	0
OCT				
OCT 2	0.12	0.69	0	0
OCT 10	0.15	0.72	0	0
OCT 16	0.18	1.09	0	0
OCT 23	0.14	0.72	0	0
OCT 30	0.20	0.76	0	0

Blank Cell = No Data Collected



Abbotsford Water Distribution System

Recent Water Quality Results

Updated: 10-Jan-19



E5	Turbidity	Total Chlorine	Total Coliforms	E. Coli
Units	NTU	ppm	counts	counts
Target	< 1.0	0.2 - 1.2	< 10	0
DEC				
DEC 4	0.18	0.48	0	0
DEC 11	0.19	0.42	0	0
DEC 18	0.27	0.63	0	0
DEC 27	0.17	0.39	0	0
NOV				
NOV 6	0.19	0.08	0	0
NOV 14	0.17	0.31	0	0
NOV 20	0.18	0.20	0	0
NOV 27	0.17	0.45	0	0
OCT				
OCT 2	0.15	0.25	0	0
OCT 10	0.15	0.17	0	0
OCT 16	0.16	0.40	0	0
OCT 23	0.22	0.21	0	0
OCT 30	0.11	0.36	0	0

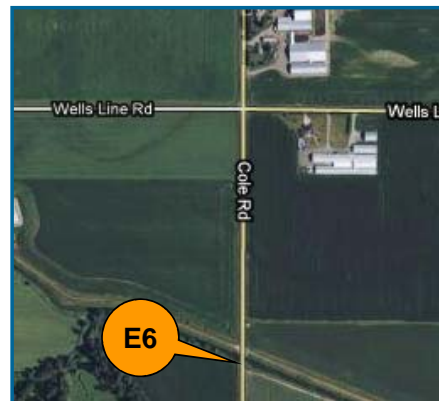
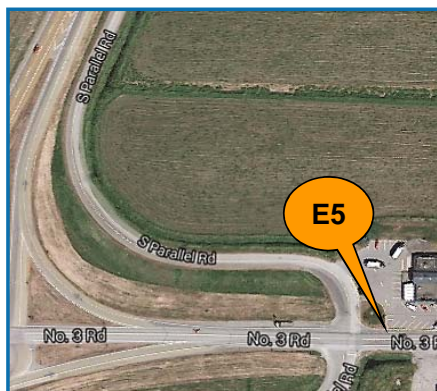
Blank Cell = No Data Collected

E6	Turbidity	Total Chlorine	Total Coliforms	E. Coli
Units	NTU	ppm	counts	counts
Target	< 1.0	0.2 - 1.2	< 10	0
DEC				
DEC 4	0.21	1.25	0	0
DEC 11	0.17	1.09	0	0
DEC 18	0.17	1.08	0	0
DEC 27	0.16	1.26	0	0
NOV				
NOV 6	0.19	0.12	0	0
NOV 14	0.17	1.42	0	0
NOV 20	0.17	1.30	0	0
NOV 27	0.15	0.50	0	0
OCT				
OCT 2	0.14	0.90	0	0
OCT 10	0.16	1.33	0	0
OCT 16	0.13	1.29	0	0
OCT 23	0.27	1.16	0	0
OCT 30	0.18	0.70	0	0

Blank Cell = No Data Collected

E7	Turbidity	Total Chlorine	Total Coliforms	E. Coli
Units	NTU	ppm	counts	counts
Target	< 1.0	0.2 - 1.2	< 10	0
DEC				
DEC 4	0.22	0.30	0	0
DEC 11	0.19	0.39	0	0
DEC 18	0.16	0.57	0	0
DEC 27	0.22	0.31	0	0
NOV				
NOV 6	0.16	0.05	0	0
NOV 14	0.23	0.07	0	0
NOV 20	0.16	0.19	0	0
NOV 27	0.17	0.04	0	0
OCT				
OCT 2	0.14	0.56	0	0
OCT 10	0.17	0.10	0	0
OCT 16	0.15	0.48	0	0
OCT 23	0.21	0.22	0	0
OCT 30	0.18	0.14	0	0

Blank Cell = No Data Collected



Abbotsford Water Distribution System

Recent Water Quality Results

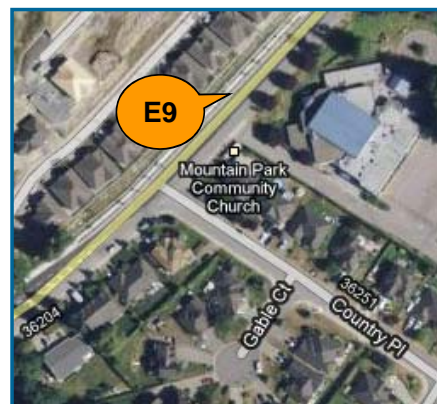
Updated: 10-Jan-19



E8	Turbidity	Total Chlorine	Total Coliforms	E. Coli
Units	NTU	ppm	counts	counts
Target	< 1.0	0.2 - 1.2	< 10	0
DEC				
DEC 4	0.18	1.26	0	0
DEC 11	0.32	0.62	0	0
DEC 18	0.24	1.10	0	0
DEC 27	0.13	0.48	0	0
NOV				
NOV 6	0.14	0.15	0	0
NOV 14	0.25	0.39	0	0
NOV 20	0.22	0.78	0	0
NOV 27	0.34	0.51	0	0
OCT				
OCT 2	0.13	0.85	0	0
OCT 10	0.14	0.38	0	0
OCT 16	0.13	1.08	0	0
OCT 23	0.25	0.77	0	0
OCT 30	0.16	0.88	0	0
Blank Cell = No Data Collected				

E9	Turbidity	Total Chlorine	Total Coliforms	E. Coli
Units	NTU	ppm	counts	counts
Target	< 1.0	0.2 - 1.2	< 10	0
DEC				
DEC 4	0.18	1.31	0	0
DEC 11	0.14	1.25	0	0
DEC 18	0.19	1.16	0	0
DEC 27	0.23	1.26	0	0
NOV				
NOV 6	0.22	1.01	0	0
NOV 14	0.13	1.36	0	0
NOV 20	0.16	1.17	0	0
NOV 27	0.27	1.00	0	0
OCT				
OCT 2	0.15	0.94	0	0
OCT 10	0.15	1.01	0	0
OCT 16	0.16	1.21	0	0
OCT 23	0.17	1.21	0	0
OCT 30	0.16	1.13	0	0
Blank Cell = No Data Collected				

E10	Turbidity	Total Chlorine	Total Coliforms	E. Coli
Units	NTU	ppm	counts	counts
Target	< 1.0	0.2 - 1.2	< 10	0
DEC				
DEC 4	0.17	1.31	0	0
DEC 11	0.17	1.24	0	0
DEC 18	0.20	1.18	0	0
DEC 27	0.15	1.33	0	0
NOV				
NOV 6	0.32	1.22	0	0
NOV 14	0.41	1.45	0	0
NOV 20	0.15	1.24	0	0
NOV 27	0.16	1.12	0	0
OCT				
OCT 2	0.10	1.17	0	0
OCT 10	0.14	1.43	0	0
OCT 16	0.11	1.33	0	0
OCT 23	0.12	1.38	0	0
OCT 30	0.19	1.14	0	0
Blank Cell = No Data Collected				



Abbotsford Water Distribution System

Recent Water Quality Results

Updated: 10-Jan-19



E11	Turbidity	Total Chlorine	Total Coliforms	E. Coli
Units	NTU	ppm	counts	counts
Target	< 1.0	0.2 - 1.2	< 10	0
DEC				
DEC 4	0.16	1.39	0	0
DEC 11	0.15	1.32	0	0
DEC 18	0.21	1.19	0	0
DEC 27	0.16	1.34	0	0
NOV				
NOV 6	0.16	1.49	0	0
NOV 14	0.38	1.30	0	0
NOV 20	0.13	1.26	0	0
NOV 27	0.19	1.11	0	0
OCT				
OCT 2	0.12	1.07	0	0
OCT 10	0.15	1.22	0	0
OCT 16	0.18	1.50		
OCT 23	0.11	1.42	0	0
OCT 30	0.27	1.10	0	0

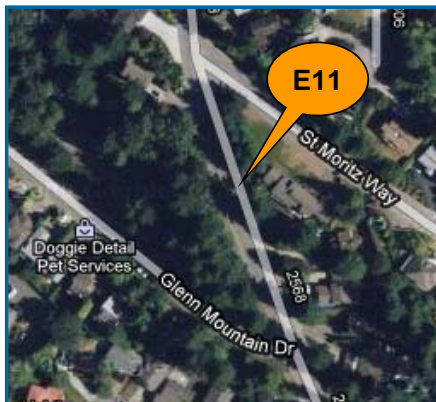
Blank Cell = No Data Collected

E12	Turbidity	Total Chlorine	Total Coliforms	E. Coli
Units	NTU	ppm	counts	counts
Target	< 1.0	0.2 - 1.2	< 10	0
DEC				
DEC 4	0.21	1.52	0	0
DEC 11	0.24	1.32	0	0
DEC 18	0.21	1.30	0	0
DEC 27	0.18	1.52	0	0
NOV				
NOV 6	0.25	1.58	0	0
NOV 14	0.34	1.69	0	0
NOV 20	0.14	1.21	0	0
NOV 27	0.21	1.07	0	0
OCT				
OCT 2	0.08	1.11	0	0
OCT 10	0.13	1.42	0	0
OCT 16	0.19	1.47	0	0
OCT 23	0.27	1.43	0	0
OCT 30	0.19	1.31	0	0

Blank Cell = No Data Collected

E13	Turbidity	Total Chlorine	Total Coliforms	E. Coli
Units	NTU	ppm	counts	counts
Target	< 1.0	0.2 - 1.2	< 10	0
DEC				
DEC 4	0.17	1.49	0	0
DEC 11	0.18	1.15	0	0
DEC 18	0.25	1.29	0	0
DEC 27	0.17	1.53	0	0
NOV				
NOV 6	0.22	1.06	0	0
NOV 14	0.16	1.36	0	0
NOV 20	0.16	1.21	0	0
NOV 27	0.19	1.02	0	0
OCT				
OCT 2	0.12	1.11	0	0
OCT 10	0.12	1.42	0	0
OCT 16	0.16	1.24	0	0
OCT 23	0.19	1.35	0	0
OCT 30	0.18	1.18	0	0

Blank Cell = No Data Collected



Abbotsford Water Distribution System

Recent Water Quality Results

Updated: 10-Jan-19



E14	Turbidity	Total Chlorine	Total Coliforms	E. Coli
Units	NTU	ppm	counts	counts
Target	< 1.0	0.2 - 1.2	< 10	0
DEC				
DEC 4	0.21	1.35	0	0
DEC 11	0.20	1.27	0	0
DEC 18	0.25	1.04	0	0
DEC 27	0.15	1.46	0	0
NOV				
NOV 6	0.17	0.83	0	0
NOV 14	0.14	1.48	0	0
NOV 20	0.16	1.28	0	0
NOV 27	0.24	0.66	0	0
OCT				
OCT 2	0.09	1.00	0	0
OCT 10	0.14	1.48	0	0
OCT 16	0.17	1.33	0	0
OCT 23	0.29	1.43	0	0
OCT 30	0.15	0.42	0	0

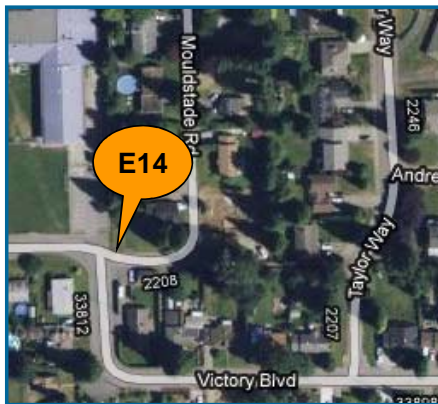
Blank Cell = No Data Collected

E15	Turbidity	Total Chlorine	Total Coliforms	E. Coli
Units	NTU	ppm	counts	counts
Target	< 1.0	0.2 - 1.2	< 10	0
DEC				
DEC 4	0.16	1.25	0	0
DEC 11	0.18	1.22	0	0
DEC 18	0.21	1.16	0	0
DEC 27	0.18	1.40	0	0
NOV				
NOV 6	0.22	1.13	0	0
NOV 14	0.18	1.20	0	0
NOV 20	0.14	1.17	0	0
NOV 27	0.23	1.16	0	0
OCT				
OCT 2	0.07	1.07	0	0
OCT 10	0.14	1.01	0	0
OCT 16	0.15	1.17	0	0
OCT 23	0.21	1.37	0	0
OCT 30	0.15	0.96	0	0

Blank Cell = No Data Collected

W1	Turbidity	Total Chlorine	Total Coliforms	E. Coli
Units	NTU	ppm	counts	counts
Target	< 1.0	0.2 - 1.2	< 10	0
DEC				
DEC 4	0.25	1.06	0	0
DEC 11	0.21	1.26	0	0
DEC 18	0.19	1.12	0	0
DEC 27	0.14	1.33	0	0
NOV				
NOV 6	0.20	1.34	0	0
NOV 14	0.15	1.44	0	0
NOV 20	0.20	1.29	0	0
NOV 27	0.17	1.12	0	0
OCT				
OCT 2	0.16	0.89	0	0
OCT 10	0.17	1.29	0	0
OCT 16	0.00	1.24	0	0
OCT 23	0.12	1.32	0	0
OCT 30	0.28	1.11	0	0

Blank Cell = No Data Collected



Abbotsford Water Distribution System

Recent Water Quality Results

Updated: 10-Jan-19



W2	Turbidity	Total Chlorine	Total Coliforms	E. Coli
Units	NTU	ppm	counts	counts
Target	< 1.0	0.2 - 1.2	< 10	0
DEC				
DEC 4	0.16	1.26	0	0
DEC 11	0.17	1.17	0	0
DEC 18	0.11	1.19	0	0
DEC 27	0.13	1.33	0	0
NOV				
NOV 6	0.40	1.42	0	0
NOV 14	0.13	1.58	0	0
NOV 20	0.17	1.33	0	0
NOV 27	0.16	1.09	0	0
OCT				
OCT 2	0.22	1.00	0	0
OCT 10	0.24	1.28	0	0
OCT 16	0.14	1.32	0	0
OCT 23	0.11	1.33	0	0
OCT 30	0.17	1.12	0	0

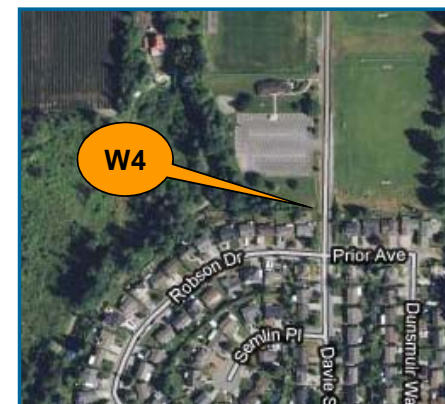
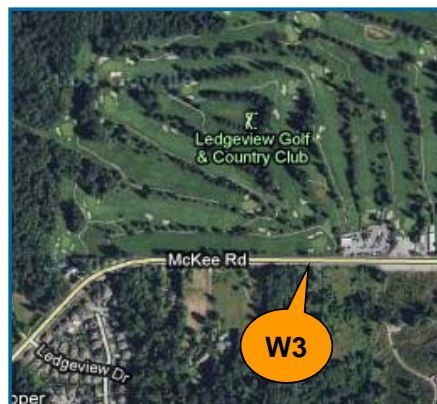
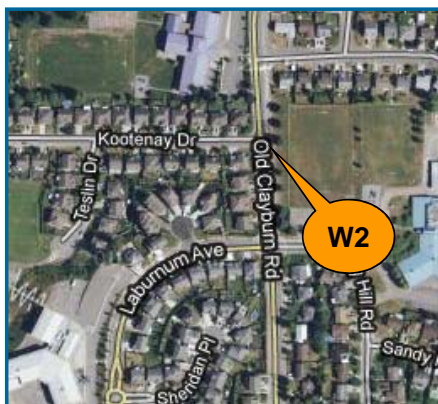
Blank Cell = No Data Collected

W3	Turbidity	Total Chlorine	Total Coliforms	E. Coli
Units	NTU	ppm	counts	counts
Target	< 1.0	0.2 - 1.2	< 10	0
DEC				
DEC 4	0.10	1.43	0	0
DEC 11	0.22	0.98	0	0
DEC 18	0.22	1.20	0	0
DEC 27	0.30	1.27	0	0
NOV				
NOV 6	0.26	1.44	0	0
NOV 14	0.30	1.74	0	0
NOV 20	0.16	1.31	0	0
NOV 27	0.19	1.20	0	0
OCT				
OCT 2	0.28	1.08	0	0
OCT 10	0.17	1.38	0	0
OCT 16	0.22	1.34	0	0
OCT 23	0.12	1.59	0	0
OCT 30	0.24	1.18	0	0

Blank Cell = No Data Collected

W4	Turbidity	Total Chlorine	Total Coliforms	E. Coli
Units	NTU	ppm	counts	counts
Target	< 1.0	0.2 - 1.2	< 10	0
DEC				
DEC 4	0.19	1.29	0	0
DEC 11	0.22	1.14	0	0
DEC 18	0.20	1.08	0	0
DEC 27	0.15	1.34	0	0
NOV				
NOV 6	0.25	1.01	0	0
NOV 14	0.19	1.47	0	0
NOV 20	0.14	1.29	0	0
NOV 27	0.24	1.11	0	0
OCT				
OCT 2	0.09	0.97	0	0
OCT 10	0.18	1.36	0	0
OCT 16	0.16	1.27	0	0
OCT 23	0.18	1.36	0	0
OCT 30	0.21	0.87	0	0

Blank Cell = No Data Collected



Abbotsford Water Distribution System

Recent Water Quality Results

Updated: 10-Jan-19



W5	Turbidity	Total Chlorine	Total Coliforms	E. Coli
Units	NTU	ppm	counts	counts
Target	< 1.0	0.2 - 1.2	< 10	0
DEC				
DEC 4	0.15	1.47	0	0
DEC 11	0.18	1.33	0	0
DEC 18	0.17	1.33	0	0
DEC 27	0.16	1.50	0	0
NOV				
NOV 6	0.25	1.81	0	0
NOV 14	0.32	1.43	0	0
NOV 20	0.24	1.26	0	0
NOV 27	0.47	1.36	0	0
OCT				
OCT 2	0.19	1.34	0	0
OCT 10	0.22	1.47	0	0
OCT 16	0.26	1.55	0	0
OCT 23	0.07	1.68	0	0
OCT 30	0.14	1.23	0	0

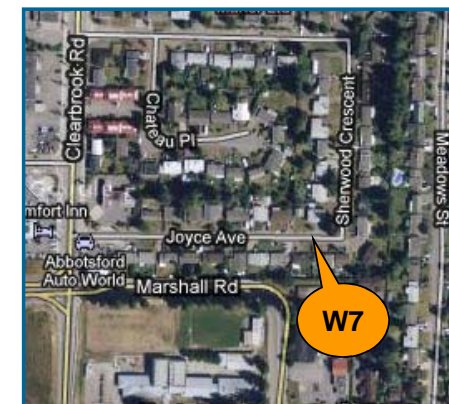
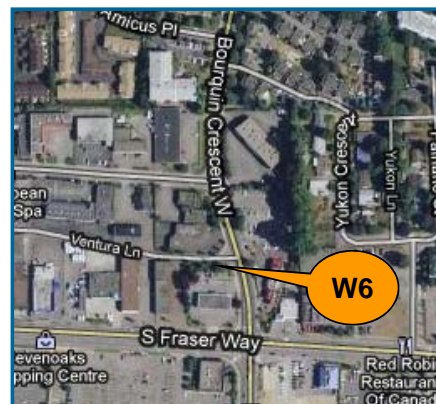
Blank Cell = No Data Collected

W6	Turbidity	Total Chlorine	Total Coliforms	E. Coli
Units	NTU	ppm	counts	counts
Target	< 1.0	0.2 - 1.2	< 10	0
DEC				
DEC 4	0.11	1.46	0	0
DEC 11	0.20	1.10	0	0
DEC 18	0.33	1.27	0	0
DEC 27	0.26	1.47	0	0
NOV				
NOV 6	0.27	1.57	0	0
NOV 14	0.31	1.62	0	0
NOV 20	0.07	1.22	0	0
NOV 27	0.41	1.35	0	0
OCT				
OCT 2	0.16	1.07	0	0
OCT 10	0.20	1.42	0	0
OCT 16	0.24	1.97	0	0
OCT 23	0.13	1.56	0	0
OCT 30	0.23	1.05	0	0

Blank Cell = No Data Collected

W7	Turbidity	Total Chlorine	Total Coliforms	E. Coli
Units	NTU	ppm	counts	counts
Target	< 1.0	0.2 - 1.2	< 10	0
DEC				
DEC 4	0.16	1.11	0	0
DEC 11	0.17	1.26	0	0
DEC 18	0.21	1.07	0	0
DEC 27	0.06	1.13	0	0
NOV				
NOV 6	0.15	0.62	0	0
NOV 14	0.20	1.15	0	0
NOV 20	0.16	1.10	0	0
NOV 27	0.24	0.40	0	0
OCT				
OCT 2	0.32	1.03	0	0
OCT 10	0.21	1.13	0	0
OCT 16	0.20	1.54	0	0
OCT 23	0.16	1.16	0	0
OCT 30	0.19	0.41	0	0

Blank Cell = No Data Collected



Abbotsford Water Distribution System

Recent Water Quality Results

Updated: 10-Jan-19



W8	Turbidity	Total Chlorine	Total Coliforms	E. Coli
Units	NTU	ppm	counts	counts
Target	< 1.0	0.2 - 1.2	< 10	0
DEC				
DEC 4	0.15	0.86	0	0
DEC 11	0.18	1.02	0	0
DEC 18	0.15	0.89	0	0
DEC 27	0.19	0.29	0	0
NOV				
NOV 6	0.26	0.28	0	0
NOV 14	0.20	0.67	0	0
NOV 20	0.21	0.59	0	0
NOV 27	0.19	0.76	0	0
OCT				
OCT 2	0.22	0.43	0	0
OCT 10	0.22	0.53	0	0
OCT 16	0.15	1.07	0	0
OCT 23	0.13	0.61	0	0
OCT 30	0.38	0.20	0	0

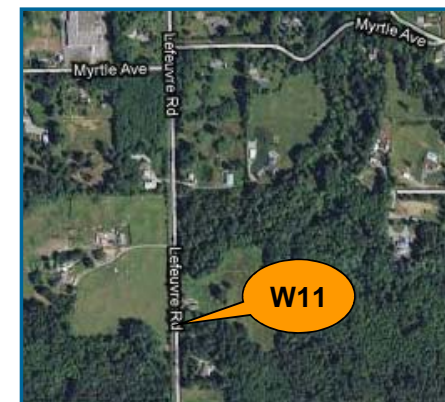
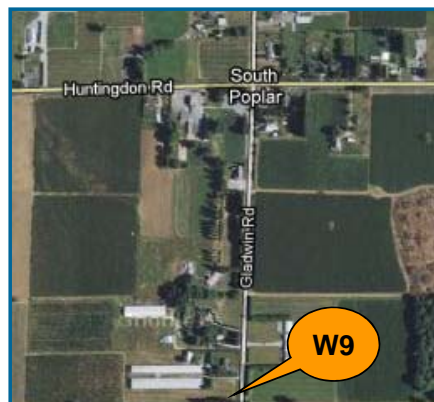
Blank Cell = No Data Collected

W9	Turbidity	Total Chlorine	Total Coliforms	E. Coli
Units	NTU	ppm	counts	counts
Target	< 1.0	0.2 - 1.2	< 10	0
DEC				
DEC 4	0.13	0.98	0	0
DEC 11	0.15	1.11	0	0
DEC 18	0.11	0.68	0	0
DEC 27	0.11	0.92	0	0
NOV				
NOV 6	0.16	0.39	0	0
NOV 14	0.24	0.91	0	0
NOV 20	0.12	0.83	0	0
NOV 27	0.12	0.37	0	0
OCT				
OCT 2	0.19	0.74	0	0
OCT 10	0.20	0.77	0	0
OCT 16	0.25	1.60	0	0
OCT 23	0.10	0.89	0	0
OCT 30	0.11	0.40	0	0

Blank Cell = No Data Collected

W11	Turbidity	Total Chlorine	Total Coliforms	E. Coli
Units	NTU	ppm	counts	counts
Target	< 1.0	0.2 - 1.2	< 10	0
DEC				
DEC 4	0.20	1.19	0	0
DEC 11	0.27	1.28	0	0
DEC 18	0.18	1.14	0	0
DEC 27	0.31	1.22	0	0
NOV				
NOV 6	0.37	1.03	0	0
NOV 14	0.29	1.33	0	0
NOV 20	1.12	1.23	0	0
NOV 27	0.16	1.06	0	0
OCT				
OCT 2	0.23	1.08	0	0
OCT 10	0.23	1.33	0	0
OCT 16	0.19	1.33	0	0
OCT 23	0.22	1.30	0	0
OCT 30	0.21	1.11	0	0

Blank Cell = No Data Collected



Abbotsford Water Distribution System

Recent Water Quality Results

Updated: 10-Jan-19



W13	Turbidity	Total Chlorine	Total Coliforms	E. Coli
Units	NTU	ppm	counts	counts
Target	< 1.0	0.2 - 1.2	< 10	0
DEC				
DEC 4	0.19	1.01	0	0
DEC 11	0.20	0.83	0	0
DEC 18	0.13	0.91	0	0
DEC 27	0.25	0.64	0	0
NOV				
NOV 6	0.35	0.74	0	0
NOV 14	0.22	0.32	0	0
NOV 20	0.33	0.98	0	0
NOV 27	0.13	0.79	0	0
OCT				
OCT 2	0.21	0.36	0	0
OCT 10	0.22	0.93	0	0
OCT 16	0.19	0.91	0	0
OCT 23	0.18	0.52	0	0
OCT 30	0.24	0.48	0	0
Blank Cell = No Data Collected				

W14	Turbidity	Total Chlorine	Total Coliforms	E. Coli
Units	NTU	ppm	counts	counts
Target	< 1.0	0.2 - 1.2	< 10	0
DEC				
DEC 4	0.25	0.67	0	0
DEC 11	0.18	0.75	0	0
DEC 18	0.18	0.71	0	0
DEC 27	0.18	0.74	0	0
NOV				
NOV 6	0.31	0.34	0	0
NOV 14	0.33	0.61	0	0
NOV 20	0.52	0.60	0	0
NOV 27	0.24	0.52	0	0
OCT				
OCT 2	0.45	0.47	0	0
OCT 10	0.15	0.44	0	0
OCT 16	0.22	0.55	0	0
OCT 23	0.18	0.58	0	0
OCT 30	0.37	0.51	0	0
Blank Cell = No Data Collected				

W15	Turbidity	Total Chlorine	Total Coliforms	E. Coli
Units	NTU	ppm	counts	counts
Target	< 1.0	0.2 - 1.2	< 10	0
DEC				
DEC 4	0.17	1.40	0	0
DEC 11	0.16	1.18	0	0
DEC 18	0.16	1.22	0	0
DEC 27	0.25	1.42	0	0
NOV				
NOV 6	0.25	1.49	0	0
NOV 14	0.18	1.77	0	0
NOV 20	0.18	1.32	0	0
NOV 27	0.28	0.97	0	0
OCT				
OCT 2	0.19	1.16	0	0
OCT 10	0.15	1.46	0	0
OCT 16	0.23	1.50	0	0
OCT 23	0.08	1.45	0	0
OCT 30	0.21	1.18	0	0
Blank Cell = No Data Collected				



Abbotsford Water Distribution System

Recent Water Quality Results

Updated: 10-Jan-19



W16	Turbidity	Total Chlorine	Total Coliforms	E. Coli
Units	NTU	ppm	counts	counts
Target	< 1.0	0.2 - 1.2	< 10	0
DEC				
DEC 4	0.15	1.10	0	0
DEC 11	0.29	1.23	0	0
DEC 18	0.19	1.13	0	0
DEC 27	0.18	1.18	0	0
NOV				
NOV 6	0.31	0.69	0	0
NOV 14	0.26	1.29	0	0
NOV 20	0.34	1.01	0	0
NOV 27	0.18	1.00	0	0
OCT				
OCT 2	0.18	0.99	0	0
OCT 10	0.22	1.12	0	0
OCT 16	0.23	1.24	0	0
OCT 23	0.29	1.19	0	0
OCT 30	0.32	1.12	0	0
Blank Cell = No Data Collected				



Abbotsford Water Distribution System

Recent Water Quality Results

Updated: 10-Jan-19



Parameter	Description	Acceptable Range
Turbidity	Suspended matter that interferes with the clarity of the water. While not a health concern itself, turbidity is an indicator of possible contamination.	There are no regulations for distribution system turbidity; water system operators aim for less than 1.0 NTU.
Total Chlorine	Used to monitor the level of disinfectant used to inactivate microorganisms such as bacteria and viruses.	There are no regulations for distribution system total chlorine; system operators aim to maintain 0.2 - 1.2 ppm. As long as there are no total coliforms, lower values are not a concern. Higher values are not deemed a health concern unless they exceed the World Health Organization's recommended limit of 5 ppm.
Total Coliforms	A group of bacteria that generally do not cause human disease, but their presence in water may indicate possible contamination.	The BC Drinking Water Act stipulates that no more than 10% of samples during a 30-day period may be positive for Total Coliforms and that no single sample may contain more than 10 counts.
E. Coli	A member of the Total Coliform group and its presence in water indicates contamination.	The BC Drinking Water Act stipulates that no E.Coli should be detected in drinking water.

Note: Turbidity and Total Chlorine are measured with field instruments. Result trends are used as indicators of significant water quality changes; specific values are not necessarily accurate.