

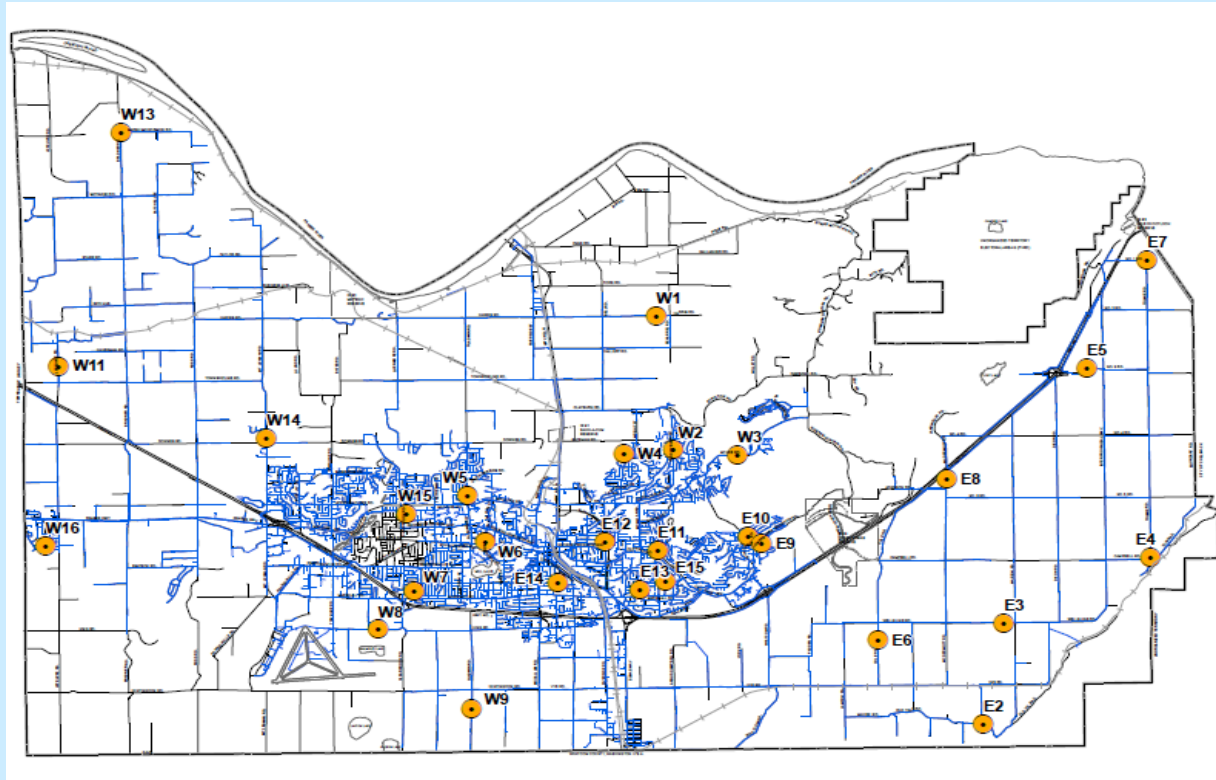
# Abbotsford Water Distribution System

## Recent Water Quality Results

Updated: 11-Feb-19



### Sample Locations



- Refer to following pages for results.
- Water quality parameter descriptions on last page.

### Questions?

Engineering  
604-864-5514  
eng-info@abbotsford.ca

# Abbotsford Water Distribution System

## Recent Water Quality Results

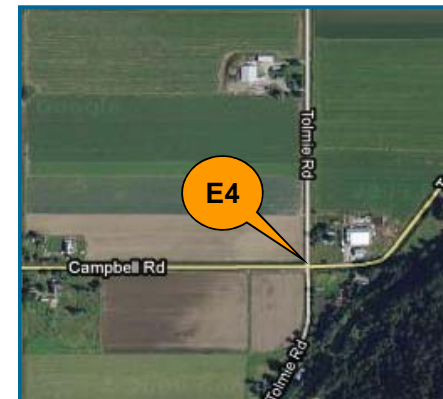
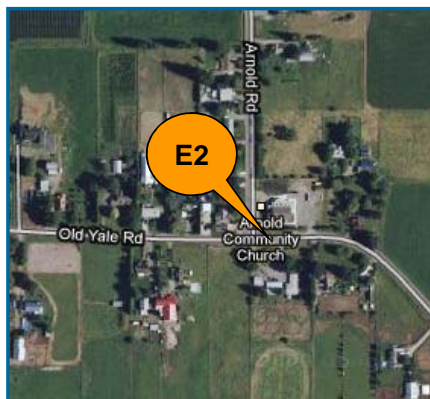
Updated: 11-Feb-19



<b>E2</b>	Turbidity	Total Chlorine	Total Coliforms	E.Coli
Units	NTU	ppm	counts	counts
Target	< 1.0	0.2 - 1.2	< 10	0
<b>JAN</b>				
JAN 3	0.16	1.40	0	0
JAN 8	0.19	0.22	0	0
JAN 15	0.08	1.31	0	0
JAN 22	0.34	1.15	0	0
JAN 29	0.17	1.28	0	0
<b>DEC</b>				
DEC 4	0.19	1.15	0	0
DEC 11	0.23	1.17	0	0
DEC 18	0.14	1.07	0	0
DEC 27	0.22	1.30	0	0
<b>NOV</b>				
NOV 6	0.13	0.06	0	0
NOV 14	0.16	0.99	0	0
NOV 20	0.19	1.25	0	0
NOV 27	0.26	0.11	0	0
Blank Cell = No Data Collected				

<b>E3</b>	Turbidity	Total Chlorine	Total Coliforms	E.Coli
Units	NTU	ppm	counts	counts
Target	< 1.0	0.2 - 1.2	< 10	0
<b>JAN</b>				
JAN 3	0.20	1.32	0	0
JAN 8	0.19	0.36	0	0
JAN 15	0.14	1.54	0	0
JAN 22	0.36	0.99	0	0
JAN 29	0.15	1.25	0	0
<b>DEC</b>				
DEC 4	0.17	0.77	0	0
DEC 11	0.21	1.00	0	0
DEC 18	0.18	1.05	0	0
DEC 27	0.21	0.91	0	0
<b>NOV</b>				
NOV 6	0.21	0.15	0	0
NOV 14	0.14	1.21	0	0
NOV 20	0.15	0.79	0	0
NOV 27	0.23	0.18	0	0
Blank Cell = No Data Collected				

<b>E4</b>	Turbidity	Total Chlorine	Total Coliforms	E.Coli
Units	NTU	ppm	counts	counts
Target	< 1.0	0.2 - 1.2	< 10	0
<b>JAN</b>				
JAN 3	0.16	0.76	0	0
JAN 8	0.20	0.78	0	0
JAN 15	0.18	0.76	0	0
JAN 22	0.18	1.15	0	0
JAN 29	0.13	1.13	0	0
<b>DEC</b>				
DEC 4	0.15	0.59	0	0
DEC 11	0.20	1.05	0	0
DEC 18	0.27	1.02	0	0
DEC 27	0.22	0.78	0	0
<b>NOV</b>				
NOV 6	0.14	0.14	0	0
NOV 14	0.19	0.73	0	0
NOV 20	0.14	1.06	0	0
NOV 27	0.13	0.61	0	0
Blank Cell = No Data Collected				



# Abbotsford Water Distribution System

## Recent Water Quality Results

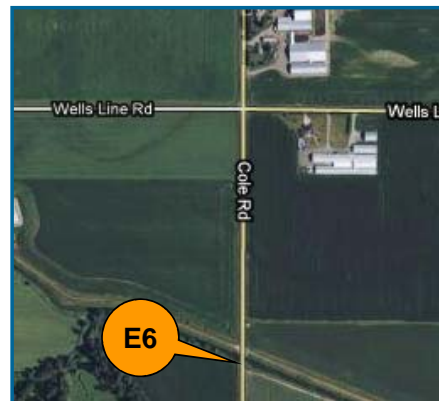
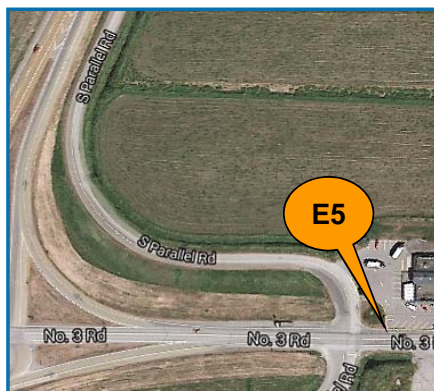
Updated: 11-Feb-19



<b>E5</b>	Turbidity	Total Chlorine	Total Coliforms	E. Coli
Units	NTU	ppm	counts	counts
Target	< 1.0	0.2 - 1.2	< 10	0
<b>JAN</b>				
JAN 3	0.27	0.29	0	0
JAN 8	0.18	0.33	0	0
JAN 15	0.22	0.41	0	0
JAN 22	0.19	0.66	0	0
JAN 29	0.10	0.87	0	0
<b>DEC</b>				
DEC 4	0.18	0.48	0	0
DEC 11	0.19	0.42	0	0
DEC 18	0.27	0.63	0	0
DEC 27	0.17	0.39	0	0
<b>NOV</b>				
NOV 6	0.19	0.08	0	0
NOV 14	0.17	0.31	0	0
NOV 20	0.18	0.20	0	0
NOV 27	0.17	0.45	0	0
Blank Cell = No Data Collected				

<b>E6</b>	Turbidity	Total Chlorine	Total Coliforms	E. Coli
Units	NTU	ppm	counts	counts
Target	< 1.0	0.2 - 1.2	< 10	0
<b>JAN</b>				
JAN 3	0.23	1.38	0	0
JAN 8	0.19	0.36	0	0
JAN 15	0.19	1.30	0	0
JAN 22	0.47	1.18	0	0
JAN 29	0.16	1.30	0	0
<b>DEC</b>				
DEC 4	0.21	1.25	0	0
DEC 11	0.17	1.09	0	0
DEC 18	0.17	1.08	0	0
DEC 27	0.16	1.26	0	0
<b>NOV</b>				
NOV 6	0.19	0.12	0	0
NOV 14	0.17	1.42	0	0
NOV 20	0.17	1.30	0	0
NOV 27	0.15	0.50	0	0
Blank Cell = No Data Collected				

<b>E7</b>	Turbidity	Total Chlorine	Total Coliforms	E. Coli
Units	NTU	ppm	counts	counts
Target	< 1.0	0.2 - 1.2	< 10	0
<b>JAN</b>				
JAN 3	0.19	0.38	0	0
JAN 8	0.18	0.05	0	0
JAN 15	0.17	0.21	0	0
JAN 22	0.25	0.09	0	0
JAN 29	0.11	0.25	0	0
<b>DEC</b>				
DEC 4	0.22	0.30	0	0
DEC 11	0.19	0.39	0	0
DEC 18	0.16	0.57	0	0
DEC 27	0.22	0.31	0	0
<b>NOV</b>				
NOV 6	0.16	0.05	0	0
NOV 14	0.23	0.07	0	0
NOV 20	0.16	0.19	0	0
NOV 27	0.17	0.04	0	0
Blank Cell = No Data Collected				



# Abbotsford Water Distribution System

## Recent Water Quality Results

Updated: 11-Feb-19



<b>E8</b>	Turbidity	Total Chlorine	Total Coliforms	E. Coli
Units	NTU	ppm	counts	counts
Target	< 1.0	0.2 - 1.2	< 10	0
<b>JAN</b>				
JAN 3	0.20	0.49	0	0
JAN 8	0.18	0.55	0	0
JAN 15	0.17	1.22	0	0
JAN 22	0.43	0.71	0	0
JAN 29	0.12	0.88	0	0
<b>DEC</b>				
DEC 4	0.18	1.26	0	0
DEC 11	0.32	0.62	0	0
DEC 18	0.24	1.10	0	0
DEC 27	0.13	0.48	0	0
<b>NOV</b>				
NOV 6	0.14	0.15	0	0
NOV 14	0.25	0.39	0	0
NOV 20	0.22	0.78	0	0
NOV 27	0.34	0.51	0	0
Blank Cell = No Data Collected				

<b>E9</b>	Turbidity	Total Chlorine	Total Coliforms	E. Coli
Units	NTU	ppm	counts	counts
Target	< 1.0	0.2 - 1.2	< 10	0
<b>JAN</b>				
JAN 3	0.16	1.39	0	0
JAN 8	0.17	1.24	0	0
JAN 15	0.18	1.29	0	0
JAN 22	0.21	1.20	0	0
JAN 29	0.12	1.26	0	0
<b>DEC</b>				
DEC 4	0.18	1.31	0	0
DEC 11	0.14	1.25	0	0
DEC 18	0.19	1.16	0	0
DEC 27	0.23	1.26	0	0
<b>NOV</b>				
NOV 6	0.22	1.01	0	0
NOV 14	0.13	1.36	0	0
NOV 20	0.16	1.17	0	0
NOV 27	0.27	1.00	0	0
Blank Cell = No Data Collected				

<b>E10</b>	Turbidity	Total Chlorine	Total Coliforms	E. Coli
Units	NTU	ppm	counts	counts
Target	< 1.0	0.2 - 1.2	< 10	0
<b>JAN</b>				
JAN 3	0.20	1.38	0	0
JAN 8	0.19	1.30	0	0
JAN 15	0.13	1.34	0	0
JAN 22	0.19	1.23	0	0
JAN 29	0.10	1.36	0	0
<b>DEC</b>				
DEC 4	0.17	1.31	0	0
DEC 11	0.17	1.24	0	0
DEC 18	0.20	1.18	0	0
DEC 27	0.15	1.33	0	0
<b>NOV</b>				
NOV 6	0.32	1.22	0	0
NOV 14	0.41	1.45	0	0
NOV 20	0.15	1.24	0	0
NOV 27	0.16	1.12	0	0
Blank Cell = No Data Collected				



# Abbotsford Water Distribution System

## Recent Water Quality Results

Updated: 11-Feb-19



<b>E11</b>	Turbidity	Total Chlorine	Total Coliforms	E. Coli
Units	NTU	ppm	counts	counts
Target	< 1.0	0.2 - 1.2	< 10	0
<b>JAN</b>				
JAN 3	0.13	1.51	0	0
JAN 8	0.16	1.21	0	0
JAN 15	0.12	1.47	0	0
JAN 22	0.20	1.38	0	0
JAN 29	0.11	1.46	0	0
<b>DEC</b>				
DEC 4	0.16	1.39	0	0
DEC 11	0.15	1.32	0	0
DEC 18	0.21	1.19	0	0
DEC 27	0.16	1.34	0	0
<b>NOV</b>				
NOV 6	0.16	1.49	0	0
NOV 14	0.38	1.30	0	0
NOV 20	0.13	1.26	0	0
NOV 27	0.19	1.11	0	0
Blank Cell = No Data Collected				

<b>E12</b>	Turbidity	Total Chlorine	Total Coliforms	E. Coli
Units	NTU	ppm	counts	counts
Target	< 1.0	0.2 - 1.2	< 10	0
<b>JAN</b>				
JAN 3	0.23	1.50	0	0
JAN 8	0.17	1.01	0	0
JAN 15	0.11	1.47	0	0
JAN 22	0.12	1.48	0	0
JAN 29	0.13	1.40	0	0
<b>DEC</b>				
DEC 4	0.21	1.52	0	0
DEC 11	0.24	1.32	0	0
DEC 18	0.21	1.30	0	0
DEC 27	0.18	1.52	0	0
<b>NOV</b>				
NOV 6	0.25	1.58	0	0
NOV 14	0.34	1.69	0	0
NOV 20	0.14	1.21	0	0
NOV 27	0.21	1.07	0	0
Blank Cell = No Data Collected				

<b>E13</b>	Turbidity	Total Chlorine	Total Coliforms	E. Coli
Units	NTU	ppm	counts	counts
Target	< 1.0	0.2 - 1.2	< 10	0
<b>JAN</b>				
JAN 3	0.16	1.52	0	0
JAN 8	0.19	1.18	0	0
JAN 15	0.20	1.48	0	0
JAN 22	0.17	1.21	0	0
JAN 29	0.12	1.35	0	0
<b>DEC</b>				
DEC 4	0.17	1.49	0	0
DEC 11	0.18	1.15	0	0
DEC 18	0.25	1.29	0	0
DEC 27	0.17	1.53	0	0
<b>NOV</b>				
NOV 6	0.22	1.06	0	0
NOV 14	0.16	1.36	0	0
NOV 20	0.16	1.21	0	0
NOV 27	0.19	1.02	0	0
Blank Cell = No Data Collected				



# Abbotsford Water Distribution System

## Recent Water Quality Results

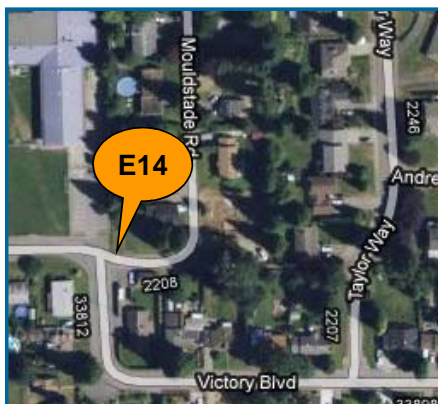
Updated: 11-Feb-19



<b>E14</b>	Turbidity	Total Chlorine	Total Coliforms	E. Coli
Units	NTU	ppm	counts	counts
Target	< 1.0	0.2 - 1.2	< 10	0
<b>JAN</b>				
JAN 3	0.13	1.45	0	0
JAN 8	0.15	0.38	0	0
JAN 15	0.21	1.46	0	0
JAN 22	0.24	1.36	0	0
JAN 29	0.12	1.58	0	0
<b>DEC</b>				
DEC 4	0.21	1.35	0	0
DEC 11	0.20	1.27	0	0
DEC 18	0.25	1.04	0	0
DEC 27	0.15	1.46	0	0
<b>NOV</b>				
NOV 6	0.17	0.83	0	0
NOV 14	0.14	1.48	0	0
NOV 20	0.16	1.28	0	0
NOV 27	0.24	0.66	0	0
Blank Cell = No Data Collected				

<b>E15</b>	Turbidity	Total Chlorine	Total Coliforms	E. Coli
Units	NTU	ppm	counts	counts
Target	< 1.0	0.2 - 1.2	< 10	0
<b>JAN</b>				
JAN 3	0.15	1.45	0	0
JAN 8	0.17	1.24	0	0
JAN 15	0.11	1.45	0	0
JAN 22	0.13	1.31	0	0
JAN 29	0.09	1.36	0	0
<b>DEC</b>				
DEC 4	0.16	1.25	0	0
DEC 11	0.18	1.22	0	0
DEC 18	0.21	1.16	0	0
DEC 27	0.18	1.40	0	0
<b>NOV</b>				
NOV 6	0.22	1.13	0	0
NOV 14	0.18	1.20	0	0
NOV 20	0.14	1.17	0	0
NOV 27	0.23	1.16	0	0
Blank Cell = No Data Collected				

<b>W1</b>	Turbidity	Total Chlorine	Total Coliforms	E. Coli
Units	NTU	ppm	counts	counts
Target	< 1.0	0.2 - 1.2	< 10	0
<b>JAN</b>				
JAN 3	0.38	1.36	0	0
JAN 8	0.15	1.30	0	0
JAN 15	0.28	1.20	0	0
JAN 22	0.19	1.05	0	0
JAN 29	0.27	1.32	0	0
<b>DEC</b>				
DEC 4	0.25	1.06	0	0
DEC 11	0.21	1.26	0	0
DEC 18	0.19	1.12	0	0
DEC 27	0.14	1.33	0	0
<b>NOV</b>				
NOV 6	0.20	1.34	0	0
NOV 14	0.15	1.44	0	0
NOV 20	0.00	1.29	0	0
NOV 27	0.17	1.12	0	0
Blank Cell = No Data Collected				



# Abbotsford Water Distribution System

## Recent Water Quality Results

Updated: 11-Feb-19



W2	Turbidity	Total Chlorine	Total Coliforms	E. Coli
Units	NTU	ppm	counts	counts
Target	< 1.0	0.2 - 1.2	< 10	0
JAN				
JAN 3	0.29	1.33	0	0
JAN 8	0.23	1.36	0	0
JAN 15	0.17	1.27	0	0
JAN 22	0.36	1.30	0	0
JAN 29	0.17	1.32	0	0
DEC				
DEC 4	0.16	1.26	0	0
DEC 11	0.17	1.17	0	0
DEC 18	0.11	1.19	0	0
DEC 27	0.13	1.33	0	0
NOV				
NOV 6	0.40	1.42	0	0
NOV 14	0.13	1.58	0	0
NOV 20	0.17	1.33	0	0
NOV 27	0.16	1.09	0	0

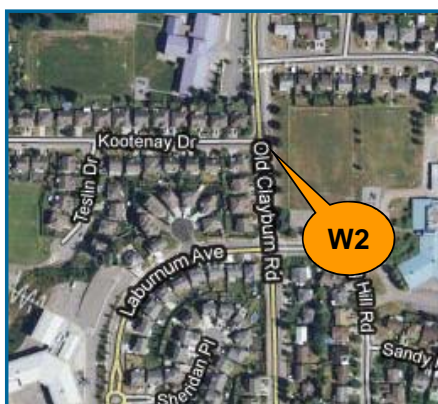
Blank Cell = No Data Collected

W3	Turbidity	Total Chlorine	Total Coliforms	E. Coli
Units	NTU	ppm	counts	counts
Target	< 1.0	0.2 - 1.2	< 10	0
JAN				
JAN 3	0.30	1.44	0	0
JAN 8	0.16	1.21	0	0
JAN 15	0.16	1.48	0	0
JAN 22	0.39	1.33	0	0
JAN 29	0.25	1.48	0	0
DEC				
DEC 4	0.10	1.43	0	0
DEC 11	0.22	0.98	0	0
DEC 18	0.22	1.20	0	0
DEC 27	0.30	1.27	0	0
NOV				
NOV 6	0.26	1.44	0	0
NOV 14	0.30	1.74	0	0
NOV 20	0.16	1.31	0	0
NOV 27	0.19	1.20	0	0

Blank Cell = No Data Collected

W4	Turbidity	Total Chlorine	Total Coliforms	E. Coli
Units	NTU	ppm	counts	counts
Target	< 1.0	0.2 - 1.2	< 10	0
JAN				
JAN 3	0.23	1.38	0	0
JAN 8	0.25	1.11	0	0
JAN 15	0.17	1.27	0	0
JAN 22	0.39	1.33	0	0
JAN 29	0.18	1.33	0	0
DEC				
DEC 4	0.19	1.29	0	0
DEC 11	0.22	1.14	0	0
DEC 18	0.20	1.08	0	0
DEC 27	0.15	1.34	0	0
NOV				
NOV 6	0.25	1.01	0	0
NOV 14	0.19	1.47	0	0
NOV 20	0.14	1.29	0	0
NOV 27	0.24	1.11	0	0

Blank Cell = No Data Collected



# Abbotsford Water Distribution System

## Recent Water Quality Results

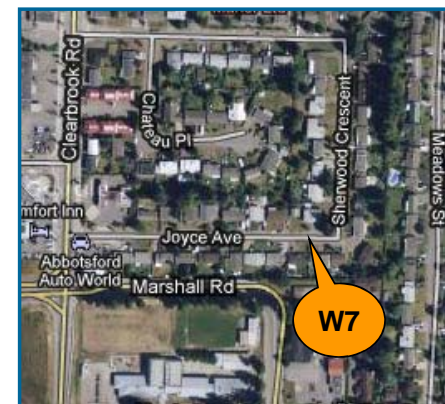
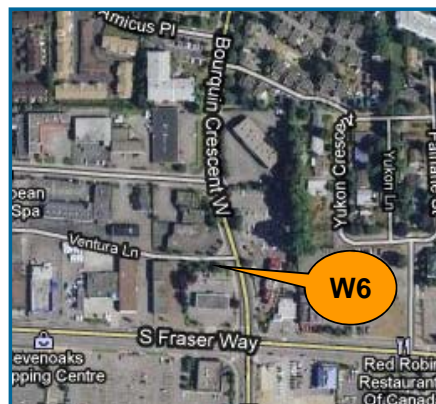
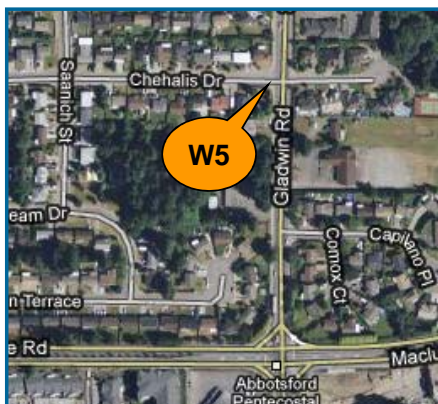
Updated: 11-Feb-19



W5	Turbidity	Total Chlorine	Total Coliforms	E. Coli
Units	NTU	ppm	counts	counts
Target	< 1.0	0.2 - 1.2	< 10	0
JAN				
JAN 3	0.21	1.53	0	0
JAN 8	0.38	1.41	0	0
JAN 15	0.13	1.42	0	0
JAN 22	0.39	1.46	0	0
JAN 29	0.18	1.34	0	0
DEC				
DEC 4	0.15	1.47	0	0
DEC 11	0.18	1.33	0	0
DEC 18	0.17	1.33	0	0
DEC 27	0.16	1.50	0	0
NOV				
NOV 6	0.25	1.81	0	0
NOV 14	0.32	1.43	0	0
NOV 20	0.24	1.26	0	0
NOV 27	0.47	1.36	0	0
Blank Cell = No Data Collected				

W6	Turbidity	Total Chlorine	Total Coliforms	E. Coli
Units	NTU	ppm	counts	counts
Target	< 1.0	0.2 - 1.2	< 10	0
JAN				
JAN 3	0.17	1.45	0	0
JAN 8	0.28	1.36	0	0
JAN 15	0.12	1.39	0	0
JAN 22	0.22	1.39	0	0
JAN 29	0.22	1.45	0	0
DEC				
DEC 4	0.11	1.46	0	0
DEC 11	0.20	1.10	0	0
DEC 18	0.33	1.27	0	0
DEC 27	0.26	1.47	0	0
NOV				
NOV 6	0.27	1.57	0	0
NOV 14	0.31	1.62	0	0
NOV 20	0.07	1.22	0	0
NOV 27	0.41	1.35	0	0
Blank Cell = No Data Collected				

W7	Turbidity	Total Chlorine	Total Coliforms	E. Coli
Units	NTU	ppm	counts	counts
Target	< 1.0	0.2 - 1.2	< 10	0
JAN				
JAN 3	0.26	1.35	0	0
JAN 8	0.17	0.68	0	0
JAN 15	0.10	1.30	0	0
JAN 22	0.12	1.27	0	0
JAN 29	0.17	1.34	0	0
DEC				
DEC 4	0.16	1.11	0	0
DEC 11	0.17	1.26	0	0
DEC 18	0.21	1.07	0	0
DEC 27	0.06	1.13	0	0
NOV				
NOV 6	0.15	0.62	0	0
NOV 14	0.20	1.15	0	0
NOV 20	0.16	1.10	0	0
NOV 27	0.24	0.40	0	0
Blank Cell = No Data Collected				





# Abbotsford Water Distribution System

## Recent Water Quality Results

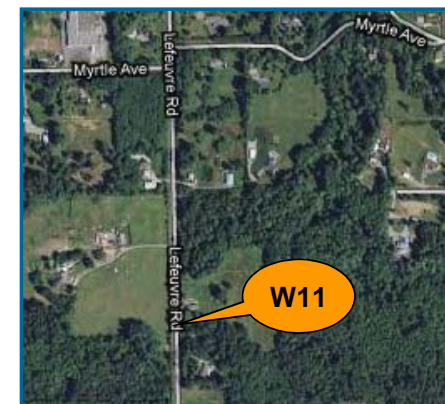
Updated: 11-Feb-19



W8	Turbidity	Total Chlorine	Total Coliforms	E. Coli
Units	NTU	ppm	counts	counts
Target	< 1.0	0.2 - 1.2	< 10	0
JAN				
JAN 3	0.20	0.42	0	0
JAN 8	0.26	0.70	0	0
JAN 15	0.29	0.72	0	0
JAN 22	0.38	0.87	0	0
JAN 29	0.11	0.96	0	0
DEC				
DEC 4	0.15	0.86	0	0
DEC 11	0.18	1.02	0	0
DEC 18	0.15	0.89	0	0
DEC 27	0.19	0.29	0	0
NOV				
NOV 6	0.26	0.28	0	0
NOV 14	0.20	0.67	0	0
NOV 20	0.21	0.59	0	0
NOV 27	0.19	0.76	0	0
Blank Cell = No Data Collected				

W9	Turbidity	Total Chlorine	Total Coliforms	E. Coli
Units	NTU	ppm	counts	counts
Target	< 1.0	0.2 - 1.2	< 10	0
JAN				
JAN 3	0.21	0.48	0	0
JAN 8	0.09	0.45	0	0
JAN 15	0.08	0.93	0	0
JAN 22	0.32	1.09	0	0
JAN 29	0.18	1.03	0	0
DEC				
DEC 4	0.13	0.98	0	0
DEC 11	0.15	1.11	0	0
DEC 18	0.11	0.68	0	0
DEC 27	0.11	0.92	0	0
NOV				
NOV 6	0.16	0.39	0	0
NOV 14	0.24	0.91	0	0
NOV 20	0.12	0.83	0	0
NOV 27	0.12	0.37	0	0
Blank Cell = No Data Collected				

W11	Turbidity	Total Chlorine	Total Coliforms	E. Coli
Units	NTU	ppm	counts	counts
Target	< 1.0	0.2 - 1.2	< 10	0
JAN				
JAN 3	0.22	1.17	0	0
JAN 8	0.18	1.20	0	0
JAN 15	0.19	1.16	0	0
JAN 22	0.21	1.14	0	0
JAN 29	0.20	0.70	0	0
DEC				
DEC 4	0.20	1.19	0	0
DEC 11	0.27	1.28	0	0
DEC 18	0.18	1.14	0	0
DEC 27	0.31	1.22	0	0
NOV				
NOV 6	0.37	1.03	0	0
NOV 14	0.29	1.33	0	0
NOV 20	1.12	1.23	0	0
NOV 27	0.16	1.06	0	0
Blank Cell = No Data Collected				



# Abbotsford Water Distribution System

## Recent Water Quality Results

Updated: 11-Feb-19



W13	Turbidity	Total Chlorine	Total Coliforms	E. Coli
Units	NTU	ppm	counts	counts
Target	< 1.0	0.2 - 1.2	< 10	0
JAN				
JAN 3	0.15	1.04	0	0
JAN 8	0.19	0.40	0	0
JAN 15	0.15	1.02	0	0
JAN 22	0.20	0.45	0	0
JAN 29	0.19	1.07	0	0
DEC				
DEC 4	0.19	1.01	0	0
DEC 11	0.20	0.83	0	0
DEC 18	0.13	0.91	0	0
DEC 27	0.25	0.64	0	0
NOV				
NOV 6	0.35	0.74	0	0
NOV 14	0.22	0.32	0	0
NOV 20	0.33	0.98	0	0
NOV 27	0.13	0.79	0	0
Blank Cell = No Data Collected				

W14	Turbidity	Total Chlorine	Total Coliforms	E. Coli
Units	NTU	ppm	counts	counts
Target	< 1.0	0.2 - 1.2	< 10	0
JAN				
JAN 3	0.27	0.74	0	0
JAN 8	0.20	0.85	0	0
JAN 15	0.15	0.84	0	0
JAN 22	0.50	0.80	0	0
JAN 29	0.28	0.70	0	0
DEC				
DEC 4	0.25	0.67	0	0
DEC 11	0.18	0.75	0	0
DEC 18	0.18	0.71	0	0
DEC 27	0.18	0.74	0	0
NOV				
NOV 6	0.31	0.34	0	0
NOV 14	0.33	0.61	0	0
NOV 20	0.52	0.60	0	0
NOV 27	0.24	0.52	0	0
Blank Cell = No Data Collected				

W15	Turbidity	Total Chlorine	Total Coliforms	E. Coli
Units	NTU	ppm	counts	counts
Target	< 1.0	0.2 - 1.2	< 10	0
JAN				
JAN 3	0.20	1.55	0	0
JAN 8	0.33	1.37	0	0
JAN 15	0.13	1.42	0	0
JAN 22	0.30	1.35	0	0
JAN 29	0.16	1.45	0	0
DEC				
DEC 4	0.17	1.40	0	0
DEC 11	0.16	1.18	0	0
DEC 18	0.16	1.22	0	0
DEC 27	0.25	1.42	0	0
NOV				
NOV 6	0.25	1.49	0	0
NOV 14	0.18	1.77	0	0
NOV 20	0.18	1.32	0	0
NOV 27	0.28	0.97	0	0
Blank Cell = No Data Collected				



# Abbotsford Water Distribution System

## Recent Water Quality Results

Updated: 11-Feb-19



<b>W16</b>	Turbidity	Total Chlorine	Total Coliforms	E. Coli
Units	NTU	ppm	counts	counts
Target	< 1.0	0.2 - 1.2	< 10	0
<b>JAN</b>				
JAN 3	0.19	0.88	0	0
JAN 8	0.23	1.16	0	0
JAN 15	0.24	1.17	0	0
JAN 22	0.27	1.11	0	0
JAN 29	0.29	1.11	0	0
<b>DEC</b>				
DEC 4	0.15	1.10	0	0
DEC 11	0.29	1.23	0	0
DEC 18	0.19	1.13	0	0
DEC 27	0.18	1.18	0	0
<b>NOV</b>				
NOV 6	0.31	0.69	0	0
NOV 14	0.26	1.29	0	0
NOV 20	0.34	1.01	0	0
NOV 27	0.18	1.00	0	0
Blank Cell = No Data Collected				



# Abbotsford Water Distribution System

## Recent Water Quality Results

Updated: 11-Feb-19



Parameter	Description	Acceptable Range
<b>Turbidity</b>	Suspended matter that interferes with the clarity of the water. While not a health concern itself, turbidity is an indicator of possible contamination.	There are no regulations for distribution system turbidity; water system operators aim for less than 1.0 NTU.
<b>Total Chlorine</b>	Used to monitor the level of disinfectant used to inactivate microorganisms such as bacteria and viruses.	There are no regulations for distribution system total chlorine; system operators aim to maintain 0.2 - 1.2 ppm. As long as there are no total coliforms, lower values are not a concern. Higher values are not deemed a health concern unless they exceed the World Health Organization's recommended limit of 5 ppm.
<b>Total Coliforms</b>	A group of bacteria that generally do not cause human disease, but their presence in water may indicate possible contamination.	The BC Drinking Water Act stipulates that no more than 10% of samples during a 30-day period may be positive for Total Coliforms and that no single sample may contain more than 10 counts.
<b>E. Coli</b>	A member of the Total Coliform group and its presence in water indicates contamination.	The BC Drinking Water Act stipulates that no E.Coli should be detected in drinking water.

**Note: Turbidity and Total Chlorine are measured with field instruments. Result trends are used as indicators of significant water quality changes; specific values are not necessarily accurate.**