

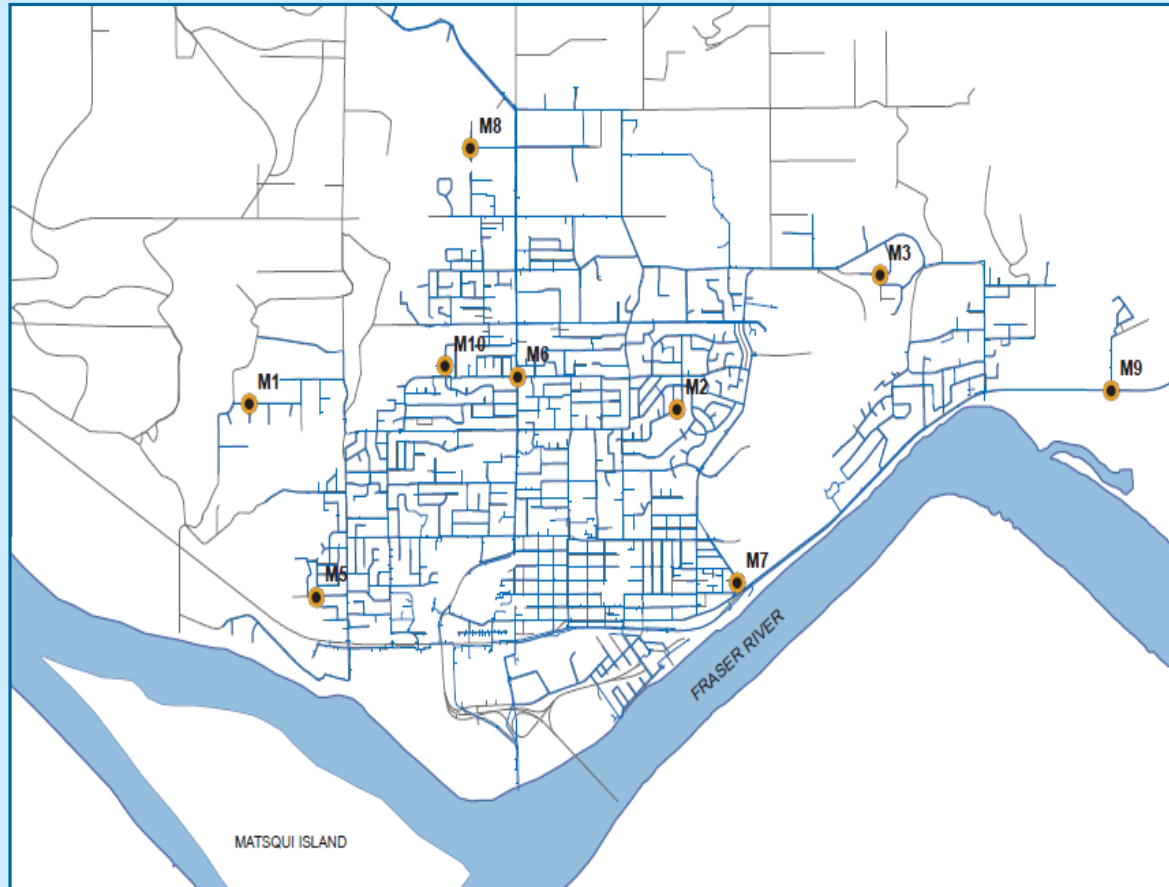
Mission Water Distribution System

Recent Water Quality Results

Updated: 1-Mar-20



Sample Locations



- Refer to following pages for results.
- Water quality parameter descriptions on last

Questions?

Paul Algra
District of Mission Public Works
604-820-3769
palgra@mission.ca

Mission Water Distribution System

Recent Water Quality Results

Updated: 1-Mar-20



M1	Turbidity	Total Chlorine	Total Coliforms	E.Coli
Units	NTU	ppm	counts	counts
Target	< 1.0	0.2 - 1.2	< 10	0
FEB				
FEB 4	0.24	1.32	0	0
FEB 11	0.25	1.46	0	0
FEB 19	0.14	1.39	0	0
FEB 25	0.09	1.25	0	0
JAN				
JAN 7	0.53	1.39	0	0
JAN 14	0.12	0.82	0	0
JAN 21	0.09	1.35	0	0
JAN 30	0.16	1.11	0	0
DEC				
DEC 3	0.07	1.41	0	0
DEC 10	0.07	0.87	0	0
DEC 23	0.11	1.01	0	0
DEC 30	0.19	1.15	0	0

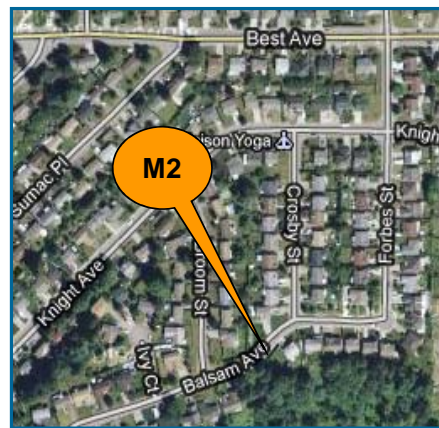
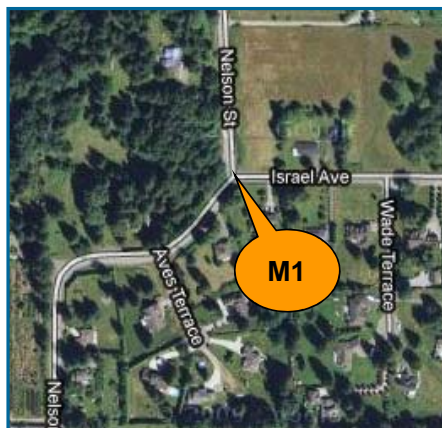
Blank Cell = No Data Collected

M2	Turbidity	Total Chlorine	Total Coliforms	E.Coli
Units	NTU	ppm	counts	counts
Target	< 1.0	0.2 - 1.2	< 10	0
FEB				
FEB 4	0.27	1.47	0	0
FEB 11	0.32	1.55	0	0
FEB 19	0.25	1.23	0	0
FEB 25	0.23	1.02	0	0
JAN				
JAN 7	0.28	1.38	0	0
JAN 14	0.33	1.19	0	0
JAN 21	0.25	1.12	0	0
JAN 30	0.28	1.26	0	0
DEC				
DEC 3	0.29	1.13	0	0
DEC 10	0.29	1.27	0	0
DEC 23	0.26	0.73	0	0
DEC 30	0.35	1.07	0	0

Blank Cell = No Data Collected

M3	Turbidity	Total Chlorine	Total Coliforms	E.Coli
Units	NTU	ppm	counts	counts
Target	< 1.0	0.2 - 1.2	< 10	0
FEB				
FEB 4	0.28	1.54	0	0
FEB 11	0.44	1.56	0	0
FEB 19	0.22	1.65	0	0
FEB 25	0.22	1.45	0	0
JAN				
JAN 7	0.26	1.68	0	0
JAN 14	0.30	1.52	0	0
JAN 21	0.26	1.53	0	0
JAN 30	0.23	1.38	0	0
DEC				
DEC 3	0.27	1.33	0	0
DEC 10	0.31	1.53	0	0
DEC 23	0.26	1.27	0	0
DEC 30	0.23	1.39	0	0

Blank Cell = No Data Collected



Mission Water Distribution System

Recent Water Quality Results

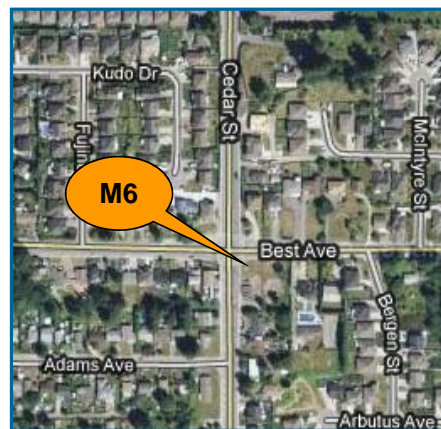
Updated: 1-Mar-20



M5	Turbidity	Total Chlorine	Total Coliforms	E. Coli
Units	NTU	ppm	counts	counts
Target	< 1.0	0.2 - 1.2	< 10	0
FEB				
FEB 4	0.42	1.49	0	0
FEB 11	0.26	1.59	0	0
FEB 19	0.14	1.52	0	0
FEB 25	0.21	1.35	0	0
JAN				
JAN 7	0.25	1.51	0	0
JAN 14	0.10	1.19	0	0
JAN 21	0.27	1.32	0	0
JAN 30	0.14	1.20	0	0
DEC				
DEC 3	0.08	1.58	0	0
DEC 10	0.08	1.12	0	0
DEC 23	0.08	1.08	0	0
DEC 30	0.11	1.26	0	0
Blank Cell = No Data Collected				

M6	Turbidity	Total Chlorine	Total Coliforms	E. Coli
Units	NTU	ppm	counts	counts
Target	< 1.0	0.2 - 1.2	< 10	0
FEB				
FEB 4	0.29	1.82	0	0
FEB 11	0.27	1.71	0	0
FEB 19			0	0
FEB 25	0.26	1.21	0	0
JAN				
JAN 7	0.27	1.78	0	0
JAN 14	0.35	1.38	0	0
JAN 21	0.27	1.39	0	0
JAN 30	0.33	1.54	0	0
DEC				
DEC 3	0.30	1.28	0	0
DEC 10	0.37	1.37	0	0
DEC 23	0.30	0.54	0	0
DEC 30	0.32	0.81	0	0
Blank Cell = No Data Collected				

M7	Turbidity	Total Chlorine	Total Coliforms	E. Coli
Units	NTU	ppm	counts	counts
Target	< 1.0	0.2 - 1.2	< 10	0
FEB				
FEB 4	0.26	1.74	0	0
FEB 11	0.30	1.61	0	0
FEB 19	0.12	1.50	0	0
FEB 25	0.14	1.31	0	0
JAN				
JAN 7	0.08	1.38	0	0
JAN 14	0.44	1.41	0	0
JAN 21	0.21	1.48	0	0
JAN 30	0.30	1.60	0	0
DEC				
DEC 3	0.29	1.54	0	0
DEC 10	0.22	1.41	0	0
DEC 23	0.14	1.15	0	0
DEC 30	0.15	1.24	0	0
Blank Cell = No Data Collected				



Mission Water Distribution System

Recent Water Quality Results

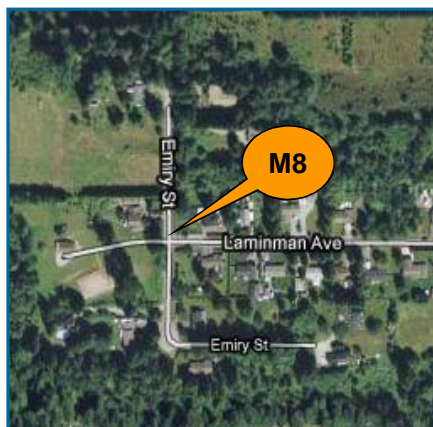
Updated: 1-Mar-20



M8	Turbidity	Total Chlorine	Total Coliforms	E. Coli
Units	NTU	ppm	counts	counts
Target	< 1.0	0.2 - 1.2	< 10	0
FEB				
FEB 4	0.44	1.44	0	0
FEB 11	0.29	1.50	0	0
FEB 19	0.31	1.65	0	0
FEB 25	0.21	1.48	0	0
JAN				
JAN 7	0.23	1.53	0	0
JAN 14	0.23	1.50	0	0
JAN 21	0.28	1.47	0	0
JAN 30	0.36	1.39	0	0
DEC				
DEC 3	0.33	1.36	0	0
DEC 10	0.26	1.24	0	0
DEC 23	0.28	1.37	0	0
DEC 30	0.21	1.43	0	0
Blank Cell = No Data Collected				

M9	Turbidity	Total Chlorine	Total Coliforms	E. Coli
Units	NTU	ppm	counts	counts
Target	< 1.0	0.2 - 1.2	< 10	0
FEB				
FEB 4	0.25	1.75	0	0
FEB 11	0.32	1.68	0	0
FEB 19	0.09	1.59	0	0
FEB 25	0.10	1.64	0	0
JAN				
JAN 7	0.13	1.33	0	0
JAN 14	0.17	1.57	0	0
JAN 21	0.09	1.53	0	0
JAN 30	0.28	1.65	0	0
DEC				
DEC 3	0.06	1.52	0	0
DEC 10	0.20	1.51	0	0
DEC 23	0.10	1.29	0	0
DEC 30	0.11	1.35	0	0
Blank Cell = No Data Collected				

M10	Turbidity	Total Chlorine	Total Coliforms	E. Coli
Units	NTU	ppm	counts	counts
Target	< 1.0	0.2 - 1.2	< 10	0
FEB				
FEB 4	0.40	1.09	0	0
FEB 11	0.23	1.27	0	0
FEB 19	0.39	1.21	0	0
FEB 25	0.13	1.08	0	0
JAN				
JAN 7	0.38	1.24	0	0
JAN 14	0.43	1.16	0	0
JAN 21	0.47	1.01	0	0
JAN 30	0.40	1.15	0	0
DEC				
DEC 3	0.24	1.27	0	0
DEC 10	0.17	0.85	0	0
DEC 23	0.19	0.86	0	0
DEC 30	0.24	1.13	0	0
Blank Cell = No Data Collected				



Mission Water Distribution System

Recent Water Quality Results

Updated: 1-Mar-20



Parameter	Description	Acceptable Range
Turbidity	Suspended matter that interferes with the clarity of the water. While not a health concern itself, turbidity is an indicator of possible contamination.	There are no regulations for distribution system turbidity; water system operators aim for less than 1.0 NTU.
Total Chlorine	Used to monitor the level of disinfectant used to inactivate microorganisms such as bacteria and viruses.	There are no regulations for distribution system total chlorine; system operators aim to maintain 0.2 - 1.2 ppm. As long as there are no total coliforms, lower values are not a concern. Higher values are not deemed a health concern unless they exceed the World Health Organization's recommended limit of 5ppm.
Total Coliforms	A group of bacteria that generally do not cause human disease, but their presence in water may indicate possible contamination.	The BC Drinking Water Act stipulates that no more than 10% of samples during a 30-day period may be positive for Total Coliforms and that no single sample may contain more than 10 counts.
E. Coli	A member of the Total Coliform group and its presence in water indicates contamination.	The BC Drinking Water Act stipulates that no E.Coli should be detected in drinking water.