

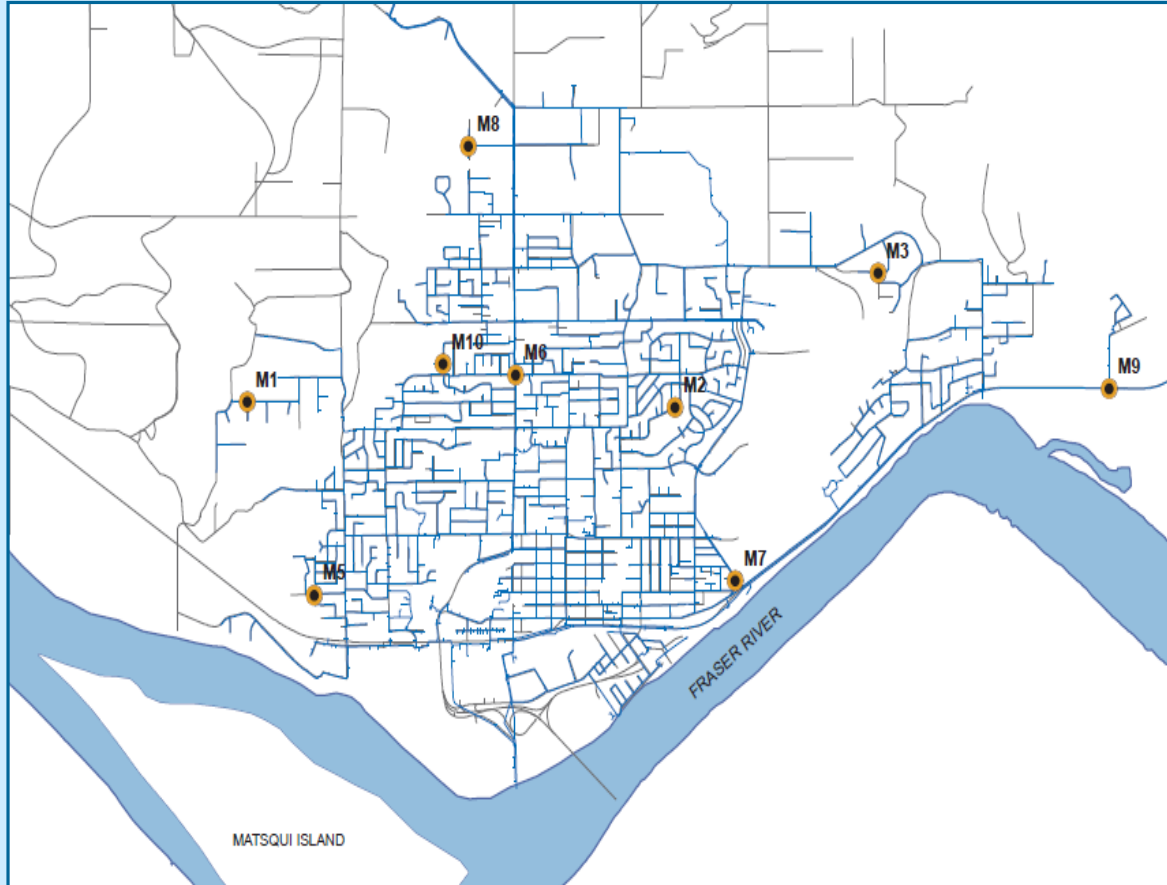
# Mission Water Distribution System

## Recent Water Quality Results

Updated: 1-Feb-20



### Sample Locations



- Refer to following pages for results.
- Water quality parameter descriptions on last

### Questions?

Paul Algra  
District of Mission Public Works  
604-820-3769  
palgra@mission.ca

# Mission Water Distribution System

## Recent Water Quality Results

Updated: 1-Feb-20



M1	Turbidity	Total Chlorine	Total Coliforms	E.Coli
Units	NTU	ppm	counts	counts
Target	< 1.0	0.2 - 1.2	< 10	0
JAN				
JAN 7	0.53	1.39	0	0
JAN 14	0.12	0.82	0	0
JAN 21	0.09	1.35	0	0
JAN 30	0.16	1.11	0	0
DEC				
DEC 3	0.07	1.41	0	0
DEC 10	0.07	0.87	0	0
DEC 23	0.11	1.01	0	0
DEC 30	0.19	1.15	0	0
NOV				
NOV 4	0.11	1.36	0	0
NOV 12	0.12	1.39	0	0
NOV 18	0.19	1.26	0	0
NOV 25	0.17	1.36	0	0

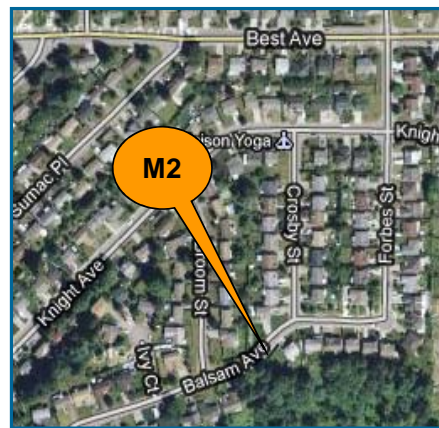
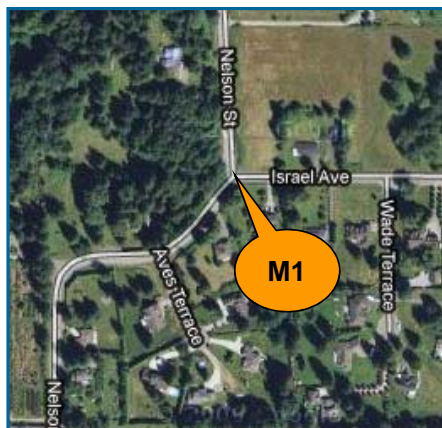
Blank Cell = No Data Collected

M2	Turbidity	Total Chlorine	Total Coliforms	E.Coli
Units	NTU	ppm	counts	counts
Target	< 1.0	0.2 - 1.2	< 10	0
JAN				
JAN 7	0.28	1.38	0	0
JAN 14	0.33	1.19	0	0
JAN 21	0.25	1.12	0	0
JAN 30	0.28	1.26	0	0
DEC				
DEC 3	0.29	1.13	0	0
DEC 10	0.29	1.27	0	0
DEC 23	0.31	1.18	0	0
DEC 30	0.35	1.07	0	0
NOV				
NOV 4	0.46	1.13	0	0
NOV 12	0.27	1.15	0	0
NOV 18	0.26	0.73	0	0
NOV 25	0.36	1.19	0	0

Blank Cell = No Data Collected

M3	Turbidity	Total Chlorine	Total Coliforms	E.Coli
Units	NTU	ppm	counts	counts
Target	< 1.0	0.2 - 1.2	< 10	0
JAN				
JAN 7	0.26	1.68	0	0
JAN 14	0.30	1.52	0	0
JAN 21	0.26	1.53	0	0
JAN 30	0.23	1.38	0	0
DEC				
DEC 3	0.27	1.33	0	0
DEC 10	0.31	1.53	0	0
DEC 23	0.26	1.27	0	0
DEC 30	0.23	1.39	0	0
NOV				
NOV 4	0.30	1.29	0	0
NOV 12	0.25	1.37	0	0
NOV 18	0.45	1.42	0	0
NOV 25	0.29	1.22	0	0

Blank Cell = No Data Collected



# Mission Water Distribution System

## Recent Water Quality Results

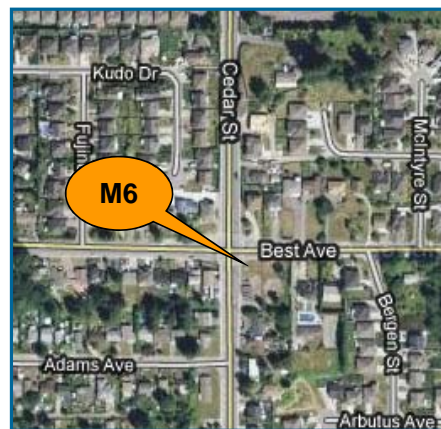
Updated: 1-Feb-20



M5	Turbidity	Total Chlorine	Total Coliforms	E. Coli
Units	NTU	ppm	counts	counts
Target	< 1.0	0.2 - 1.2	< 10	0
JAN				
JAN 7	0.25	1.51	0	0
JAN 14	0.10	1.19	0	0
JAN 21	0.27	1.32	0	0
JAN 30	0.14	1.20	0	0
DEC				
DEC 3	0.08	1.58	0	0
DEC 10	0.08	1.12	0	0
DEC 23	0.08	1.08	0	0
DEC 30	0.11	1.26	0	0
NOV				
NOV 4	0.19	1.42	0	0
NOV 12	0.19	1.42	0	0
NOV 18	0.20	1.34	0	0
NOV 25	0.30	1.45	0	0
Blank Cell = No Data Collected				

M6	Turbidity	Total Chlorine	Total Coliforms	E. Coli
Units	NTU	ppm	counts	counts
Target	< 1.0	0.2 - 1.2	< 10	0
JAN				
JAN 7	0.27	1.78	0	0
JAN 14	0.35	1.38	0	0
JAN 21	0.27	1.39	0	0
JAN 30	0.33	1.54	0	0
DEC				
DEC 3	0.30	1.28	0	0
DEC 10	0.37	1.37	0	0
DEC 23	0.30	0.54	0	0
DEC 30	0.32	0.81	0	0
NOV				
NOV 4	0.30	1.31	0	0
NOV 12	0.15	1.44	0	0
NOV 18	0.39	1.78	0	0
NOV 25	0.39	1.28	0	0
Blank Cell = No Data Collected				

M7	Turbidity	Total Chlorine	Total Coliforms	E. Coli
Units	NTU	ppm	counts	counts
Target	< 1.0	0.2 - 1.2	< 10	0
JAN				
JAN 7	0.08	1.38	0	0
JAN 14	0.44	1.41	0	0
JAN 21	0.21	1.48	0	0
JAN 30	0.30	1.60	0	0
DEC				
DEC 3	0.29	1.54	0	0
DEC 10	0.22	1.41	0	0
DEC 23	0.14	1.15	0	0
DEC 30	0.15	1.24	0	0
NOV				
NOV 4	0.14	1.65	0	0
NOV 12	0.10	1.48	0	0
NOV 18	0.36	1.43	0	0
NOV 25	0.15	1.26	0	0
Blank Cell = No Data Collected				



# Mission Water Distribution System

## Recent Water Quality Results

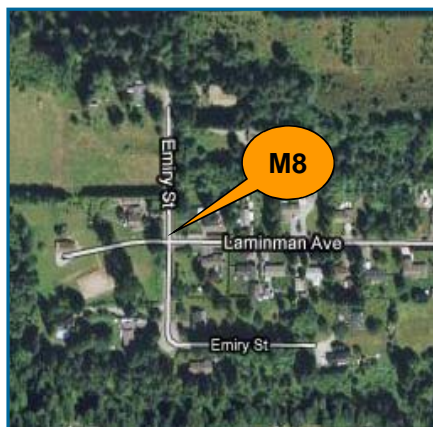
Updated: 1-Feb-20



<b>M8</b>	Turbidity	Total Chlorine	Total Coliforms	E. Coli
Units	NTU	ppm	counts	counts
Target	< 1.0	0.2 - 1.2	< 10	0
<b>JAN</b>				
JAN 7	0.23	1.53	0	0
JAN 14	0.23	1.50	0	0
JAN 21	0.28	1.47	0	0
JAN 30	0.36	1.39	0	0
<b>DEC</b>				
DEC 3	0.33	1.36	0	0
DEC 10	0.26	1.24	0	0
DEC 23	0.28	1.37	0	0
DEC 30	0.21	1.43	0	0
<b>NOV</b>				
NOV 4	0.27	1.18	0	0
NOV 12	0.13	1.47	0	0
NOV 18	0.15	1.39	0	0
NOV 25	0.24	1.13	0	0
Blank Cell = No Data Collected				

<b>M9</b>	Turbidity	Total Chlorine	Total Coliforms	E. Coli
Units	NTU	ppm	counts	counts
Target	< 1.0	0.2 - 1.2	< 10	0
<b>JAN</b>				
JAN 7	0.13	1.33	0	0
JAN 14	0.17	1.57	0	0
JAN 21	0.09	1.53	0	0
JAN 30	0.28	1.65	0	0
<b>DEC</b>				
DEC 3	0.06	1.52	0	0
DEC 10	0.20	1.51	0	0
DEC 23	0.10	1.29	0	0
DEC 30	0.11	1.35	0	0
<b>NOV</b>				
NOV 4	0.13	1.78	0	0
NOV 12	0.15	1.60	0	0
NOV 18	0.33	1.71	0	0
NOV 25	0.29	1.52	0	0
Blank Cell = No Data Collected				

<b>M10</b>	Turbidity	Total Chlorine	Total Coliforms	E. Coli
Units	NTU	ppm	counts	counts
Target	< 1.0	0.2 - 1.2	< 10	0
<b>JAN</b>				
JAN 7	0.38	1.24	0	0
JAN 14	0.43	1.16	0	0
JAN 21	0.47	1.01	0	0
JAN 30	0.40	1.15	0	0
<b>DEC</b>				
DEC 3	0.24	1.27	0	0
DEC 10	0.17	0.85	0	0
DEC 23	0.24	1.14	0	0
DEC 30	0.24	1.13	0	0
<b>NOV</b>				
NOV 4	0.18	1.15	0	0
NOV 12	0.16	1.31	0	0
NOV 18	0.19	0.86	0	0
NOV 25	0.15	1.28	0	0
Blank Cell = No Data Collected				



# Mission Water Distribution System

## Recent Water Quality Results

Updated: 1-Feb-20



Parameter	Description	Acceptable Range
<b>Turbidity</b>	Suspended matter that interferes with the clarity of the water. While not a health concern itself, turbidity is an indicator of possible contamination.	There are no regulations for distribution system turbidity; water system operators aim for less than 1.0 NTU.
<b>Total Chlorine</b>	Used to monitor the level of disinfectant used to inactivate microorganisms such as bacteria and viruses.	There are no regulations for distribution system total chlorine; system operators aim to maintain 0.2 - 1.2 ppm. As long as there are no total coliforms, lower values are not a concern. Higher values are not deemed a health concern unless they exceed the World Health Organization's recommended limit of 5ppm.
<b>Total Coliforms</b>	A group of bacteria that generally do not cause human disease, but their presence in water may indicate possible contamination.	The BC Drinking Water Act stipulates that no more than 10% of samples during a 30-day period may be positive for Total Coliforms and that no single sample may contain more than 10 counts.
<b>E. Coli</b>	A member of the Total Coliform group and its presence in water indicates contamination.	The BC Drinking Water Act stipulates that no E.Coli should be detected in drinking water.