

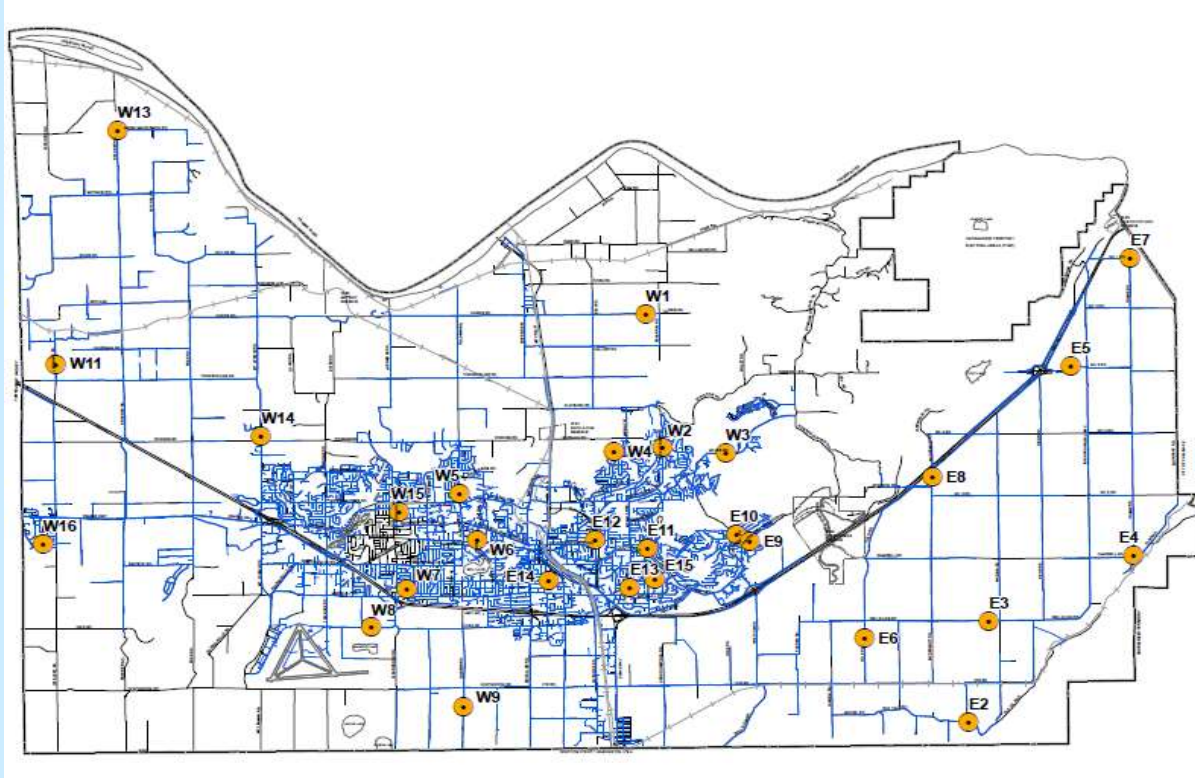
Abbotsford Water Distribution System

Recent Water Quality Results

Updated: 10/1/2020



Sample Locations



- Refer to following pages for results.
- Water quality parameter descriptions on last page.

APPROVED



By tbowie at 11:12 am, Nov 26, 2020

APPROVED



By risaac at 2:08 pm, Nov 30, 2020

Questions?

Engineering
604-864-5514
eng-info@abbotsford.ca

Abbotsford Water Distribution System

Recent Water Quality Results

Updated: 10/1/2020



E2	Turbidity	Total Chlorine	Total Coliforms	E.Coli
Units	NTU	ppm	counts	counts
Target	< 1.0	0.2 - 2.2	< 10	0
SEP				
SEP 1	0.14	1.11	0	0
SEP 9	0.12	1.12	0	0
SEP 15	0.16	1.07	0	0
SEP 22	0.11	1.06	0	0
SEP 29	0.28	1.03	0	0
AUG				
AUG 5	0.27	1.24	0	0
AUG 11	0.16	0.66	0	0
AUG 18	0.26	1.13	0	0
AUG 25	0.27	0.98	0	0
AUG 26				
AUG 27				
JUL				
JUL 7	0.22	1.18	0	0
JUL 14	0.30	1.17	0	0
JUL 21	0.09	1.13	0	0
JUL 28	0.06	1.19	0	0

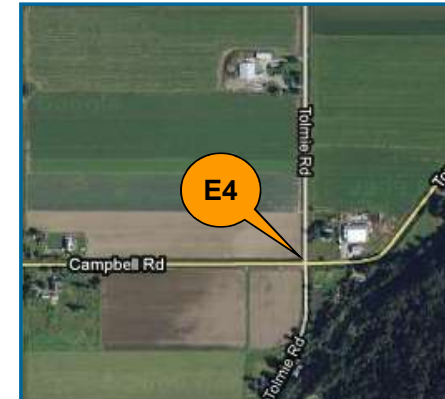
Blank Cell = No Data Collected

E3	Turbidity	Total Chlorine	Total Coliforms	E.Coli
Units	NTU	ppm	counts	counts
Target	< 1.0	0.2 - 2.2	< 10	0
SEP				
SEP 1	0.14	0.80	0	0
SEP 9	0.11	1.07	0	0
SEP 15	0.18	0.81	0	0
SEP 22	0.14	0.76	0	0
SEP 29	0.21	0.73	0	0
AUG				
AUG 5	0.24	1.21	0	0
AUG 11	0.17	0.74	0	0
AUG 18	0.36	1.07	0	0
AUG 25	0.23	0.68	0	0
AUG 26				
AUG 27				
JUL				
JUL 7	0.23	1.13	0	0
JUL 14	0.21	1.07	0	0
JUL 21	0.09	1.09	0	0
JUL 28	0.11	0.81	0	0

Blank Cell = No Data Collected

E4	Turbidity	Total Chlorine	Total Coliforms	E.Coli
Units	NTU	ppm	counts	counts
Target	< 1.0	0.2 - 2.2	< 10	0
SEP				
SEP 1	0.16	0.80	0	0
SEP 9	0.13	0.92	0	0
SEP 15	0.13	0.79	0	0
SEP 22	0.13	0.87	0	0
SEP 29	0.25	0.78	0	0
AUG				
AUG 5	0.25	1.06	0	0
AUG 11	0.22	0.81	0	0
AUG 18	0.28	0.94	0	0
AUG 25	0.29	0.82	4*	0
AUG 26			2*	0
AUG 27			0	0
JUL				
JUL 7	0.18	0.86	0	0
JUL 14	0.18	0.92	0	0
JUL 21	0.15	0.92	0	0
JUL 28	0.12	0.93	0	0

Blank Cell = No Data Collected



Abbotsford Water Distribution System

Recent Water Quality Results

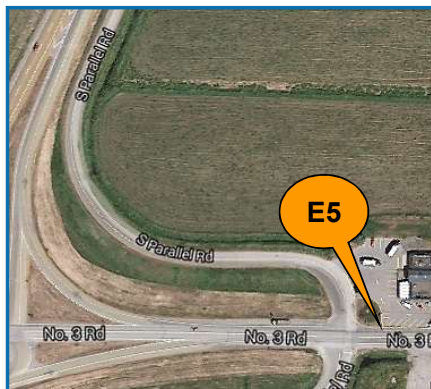
Updated: 10/1/2020



E5	Turbidity	Total Chlorine	Total Coliforms	E. Coli
Units	NTU	ppm	counts	counts
Target	< 1.0	0.2 - 2.2	< 10	0
SEP				
SEP 1	0.15	0.33	0	0
SEP 9	0.11	0.39	0	0
SEP 15	0.12	0.29	0	0
SEP 22	0.13	0.32	0	0
SEP 29	0.27	0.23	0	0
AUG				
AUG 5	0.21	0.53	0	0
AUG 11	0.17	0.36	0	0
AUG 18	0.32	0.51	0	0
AUG 25	0.26	0.26	0	0
JUL				
JUL 7	0.19	0.25	0	0
JUL 14	0.26	0.43	0	0
JUL 21	0.14	0.48	0	0
JUL 28	0.11	0.56	0	0
Blank Cell = No Data Collected				

E6	Turbidity	Total Chlorine	Total Coliforms	E. Coli
Units	NTU	ppm	counts	counts
Target	< 1.0	0.2 - 2.2	< 10	0
SEP				
SEP 1	0.13	1.10	0	0
SEP 9	0.14	1.10	0	0
SEP 15	0.15	1.06	0	0
SEP 22	0.16	1.10	0	0
SEP 29	0.25	1.03	0	0
AUG				
AUG 5	0.34	1.19	0	0
AUG 11	0.20	0.80	0	0
AUG 18	0.38	1.06	0	0
AUG 25	0.37	0.90	0	0
JUL				
JUL 7	0.26	1.16	0	0
JUL 14	0.39	1.15	0	0
JUL 21	0.16	1.10	0	0
JUL 28	0.08	1.14	0	0
Blank Cell = No Data Collected				

E7	Turbidity	Total Chlorine	Total Coliforms	E. Coli
Units	NTU	ppm	counts	counts
Target	< 1.0	0.2 - 2.2	< 10	0
SEP				
SEP 1	0.19	0.42	0	0
SEP 9	0.13	0.12	0	0
SEP 15	0.13	0.35	0	0
SEP 22	0.15	0.11	0	0
SEP 29	0.27	0.42	0	0
AUG				
AUG 5	0.20	0.10	0	0
AUG 11	0.21	0.40	0	0
AUG 18	0.30	0.20	0	0
AUG 25	0.20	0.06	0	0
JUL				
JUL 7	0.22	0.51	0	0
JUL 14	0.25	0.10**	0	0
JUL 21	0.15	0.51	0	0
JUL 28	0.11	0.38	0	0
Blank Cell = No Data Collected				



Abbotsford Water Distribution System

Recent Water Quality Results

Updated: 10/1/2020



E8	Turbidity	Total Chlorine	Total Coliforms	E. Coli
Units	NTU	ppm	counts	counts
Target	< 1.0	0.2 - 2.2	< 10	0
SEP				
SEP 1	0.19	0.61	0	0
SEP 9	0.14	1.09	0	0
SEP 15	0.14	0.59	0	0
SEP 22	0.18	0.61	0	0
SEP 29	0.58	0.60	0	0
AUG				
AUG 5	0.45	1.20	0	0
AUG 11	0.20	0.60	0	0
AUG 18	0.40	0.98	0	0
AUG 25	0.38	0.56	0	0
JUL				
JUL 7	0.25	1.20	0	0
JUL 14	0.39	0.95	0	0
JUL 21	0.15	1.08	1***	0
JUL 28	0.13	0.65	0	0

Blank Cell = No Data Collected

E9	Turbidity	Total Chlorine	Total Coliforms	E. Coli
Units	NTU	ppm	counts	counts
Target	< 1.0	0.2 - 2.2	< 10	0
SEP				
SEP 1	0.16	0.94	0	0
SEP 9	0.13	0.93	0	0
SEP 15	0.13	0.82	0	0
	0.15	0.81	0	0
SEP 29	0.37	0.82	0	0
AUG				
AUG 5	0.27	1.15	0	0
AUG 11	0.17	1.03	0	0
AUG 18	0.63	1.18	0	0
AUG 25	0.23	0.98	0	0
JUL				
JUL 7	0.18	1.08	0	0
JUL 14	0.25	1.02	0	0
JUL 21	0.10	1.13	0	0
JUL 28	0.11	1.23	0	0

Blank Cell = No Data Collected

E10	Turbidity	Total Chlorine	Total Coliforms	E. Coli
Units	NTU	ppm	counts	counts
Target	< 1.0	0.2 - 2.2	< 10	0
SEP				
SEP 1	0.14	1.08	0	0
SEP 9	0.13	1.02	0	0
SEP 15	0.13	1.05	0	0
	0.17	1.02	0	0
SEP 29	0.29	0.96	0	0
AUG				
AUG 5	0.27	1.10	0	0
AUG 11	0.76	1.76	0	0
AUG 18	0.28	1.34	0	0
AUG 25	0.20	1.05	0	0
JUL				
JUL 7	0.25	1.21	0	0
JUL 14	0.16	1.19	0	0
JUL 21	0.12	1.03	0	0
JUL 28	0.14	1.20	0	0

Blank Cell = No Data Collected



Abbotsford Water Distribution System

Recent Water Quality Results

Updated: 10/1/2020



E11	Turbidity	Total Chlorine	Total Coliforms	E.Coli
Units	NTU	ppm	counts	counts
Target	< 1.0	0.2 - 2.2	< 10	0
SEP				
SEP 1	0.15	1.14	0	0
SEP 9	0.13	0.99	0	0
SEP 15	0.12	1.16	0	0
SEP 22	0.55	1.38	0	0
SEP 29	0.22	1.05		
AUG				
AUG 5	0.50	1.02	0	0
AUG 11	0.42	1.12	0	0
AUG 18	0.21	1.32	0	0
AUG 25	0.26	1.13	0	0
JUL				
JUL 7	0.27	1.27	0	0
JUL 14	0.19	1.18	0	0
JUL 21	0.12	1.17	0	0
JUL 28	0.13	0.98	0	0

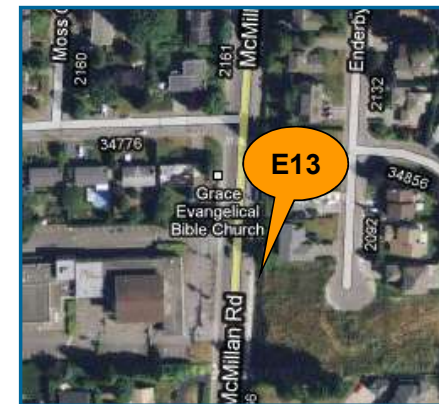
Blank Cell = No Data Collected

E12	Turbidity	Total Chlorine	Total Coliforms	E.Coli
Units	NTU	ppm	counts	counts
Target	< 1.0	0.2 - 2.2	< 10	0
SEP				
SEP 1	0.16	1.32	0	0
SEP 9	0.14	1.30	0	0
SEP 15	0.13	1.17	0	0
SEP 22	0.24	0.88	0	0
SEP 29	0.24	1.07	0	0
AUG				
AUG 5	0.37	1.45	0	0
AUG 11	0.71	2.14	0	0
AUG 18	0.31	1.26	0	0
AUG 25	0.20	1.21	0	0
JUL				
JUL 7	0.19	1.23	0	0
JUL 14	0.23	1.32	0	0
JUL 21	0.09	1.27	0	0
JUL 28	0.08	1.38	0	0

Blank Cell = No Data Collected

E13	Turbidity	Total Chlorine	Total Coliforms	E.Coli
Units	NTU	ppm	counts	counts
Target	< 1.0	0.2 - 2.2	< 10	0
SEP				
SEP 1	0.19	1.32	0	0
SEP 9	0.13	0.92	0	0
SEP 15	0.15	1.26	0	0
SEP 22	0.16	0.89	0	0
SEP 29	0.34	1.21	0	0
AUG				
AUG 5	0.25	1.00	0	0
AUG 11	0.20	0.86	0	0
AUG 18	0.29	1.40	0	0
AUG 25	0.22	1.02	0	0
JUL				
JUL 7	0.25	1.05	0	0
JUL 14	0.17	1.10	0	0
JUL 21	0.13	1.04	0	0
JUL 28	0.20	1.09	0	0

Blank Cell = No Data Collected



Abbotsford Water Distribution System

Recent Water Quality Results

Updated: 10/1/2020



E14	Turbidity	Total Chlorine	Total Coliforms	E. Coli
Units	NTU	ppm	counts	counts
Target	< 1.0	0.2 - 2.2	< 10	0
SEP				
SEP 1	0.15	0.91	0	0
SEP 9	0.10	0.92	0	0
SEP 15	0.13	1.01	0	0
SEP 22	0.20	1.18	0	0
SEP 29	0.27	0.98	0	0
AUG				
AUG 5	0.22	1.15	0	0
AUG 11	0.10	0.58	0	0
AUG 18	0.16	0.85	0	0
AUG 25	0.20	0.90	0	0
JUL				
JUL 7	0.13	0.68	0	0
JUL 14	0.10	0.82	0	0
JUL 21	0.11	0.89	0	0
JUL 28	0.13	1.09	0	0

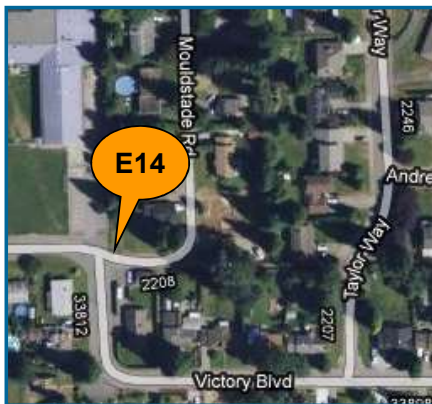
Blank Cell = No Data Collected

E15	Turbidity	Total Chlorine	Total Coliforms	E. Coli
Units	NTU	ppm	counts	counts
Target	< 1.0	0.2 - 2.2	< 10	0
SEP				
SEP 1	0.11	0.95	0	0
SEP 9	0.14	0.96	0	0
SEP 15	0.12	1.11	0	0
SEP 22	0.15	1.06	0	0
SEP 29	0.27	0.82	0	0
AUG				
AUG 5	0.25	0.92	0	0
AUG 11	0.25	1.17	0	0
AUG 18	0.23	1.25	0	0
AUG 25	0.23	1.02	0	0
JUL				
JUL 7	0.26	1.27	0	0
JUL 14	0.15	1.30	0	0
JUL 21	0.09	1.25	0	0
JUL 28	0.16	1.33	0	0

Blank Cell = No Data Collected

W1	Turbidity	Total Chlorine	Total Coliforms	E. Coli
Units	NTU	ppm	counts	counts
Target	< 1.0	0.2 - 2.2	< 10	0
SEP				
SEP 1	0.13	0.50	0	0
SEP 9	0.19	0.98	0	0
SEP 15	0.17	0.90	0	0
SEP 22	0.15	0.92	0	0
SEP 29	0.23	0.81	0	0
AUG				
AUG 5	0.21	1.01	0	0
AUG 11	0.24	1.01	0	0
AUG 18	0.25	1.13	0	0
AUG 25	0.25	0.96	0	0
JUL				
JUL 7	0.15	1.16	0	0
JUL 14	0.07	1.07	0	0
JUL 21	0.15	1.14	0	0
JUL 28	0.12	1.18	0	0

Blank Cell = No Data Collected



Abbotsford Water Distribution System

Recent Water Quality Results

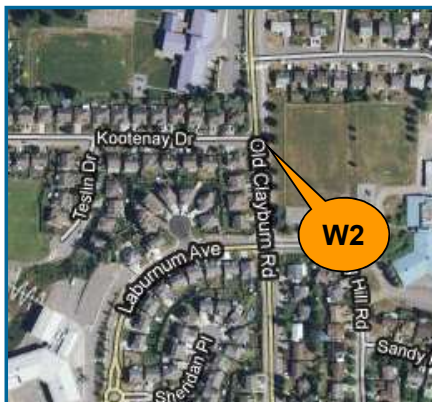
Updated: 10/1/2020



W2	Turbidity	Total Chlorine	Total Coliforms	E. Coli
Units	NTU	ppm	counts	counts
Target	< 1.0	0.2 - 2.2	< 10	0
SEP				
SEP 1	0.13	0.98	0	0
SEP 9	0.21	1.14	0	0
SEP 15	0.16	1.08	0	0
SEP 22	0.20	0.99	0	0
SEP 29	0.23	0.95	0	0
AUG				
AUG 5	0.19	1.28	0	0
AUG 11	0.48	1.31	0	0
AUG 18	0.25	1.10	0	0
AUG 25	0.18	0.99	0	0
JUL				
JUL 7	0.23	1.11	0	0
JUL 14	0.09	1.12	0	0
JUL 21	0.12	1.12	0	0
JUL 28	0.11	1.13	0	0
Blank Cell = No Data Collected				

W3	Turbidity	Total Chlorine	Total Coliforms	E. Coli
Units	NTU	ppm	counts	counts
Target	< 1.0	0.2 - 2.2	< 10	0
SEP				
SEP 1	0.14	0.92	0	0
SEP 9	0.17	1.23	0	0
SEP 15	0.16	0.89	0	0
SEP 22	0.23	0.91	0	0
SEP 29	0.26	0.74	0	0
AUG				
AUG 5	0.22	1.33	0	0
AUG 11	0.26	0.82	0	0
AUG 18	0.22	1.25	0	0
AUG 25	0.18	1.16	0	0
JUL				
JUL 7	0.15	0.99	0	0
JUL 14	0.17	0.97	0	0
JUL 21	0.15	1.26	0	0
JUL 28	0.09	1.35	0	0
Blank Cell = No Data Collected				

W4	Turbidity	Total Chlorine	Total Coliforms	E. Coli
Units	NTU	ppm	counts	counts
Target	< 1.0	0.2 - 2.2	< 10	0
SEP				
SEP 1	0.06	0.82	0	0
SEP 9	0.15	0.89	0	0
SEP 15	0.22	0.81	0	0
SEP 22	0.38	1.54	0	0
SEP 29	0.21	0.84	0	0
AUG				
AUG 5	0.11	1.02	0	0
AUG 11	0.30	1.28	0	0
AUG 18	0.08	0.74	0	0
AUG 25	0.10	0.73	0	0
JUL				
JUL 7	0.22	0.87	0	0
JUL 14	0.09	0.78	0	0
JUL 21	0.14	0.80	0	0
JUL 28	0.15	1.01	0	0
Blank Cell = No Data Collected				



Abbotsford Water Distribution System

Recent Water Quality Results

Updated: 10/1/2020



W5	Turbidity	Total Chlorine	Total Coliforms	E. Coli
Units	NTU	ppm	counts	counts
Target	< 1.0	0.2 - 2.2	< 10	0
SEP				
SEP 1	0.13	1.35	0	0
SEP 9	0.16	1.27	0	0
SEP 15	0.17	1.25	0	0
SEP 22	0.20	0.91	0	0
SEP 29	0.13	0.82	0	0
AUG				
AUG 5	0.20	1.33	0	0
AUG 11	0.50	2.29	74*	0
AUG 12			0	0
AUG 13			3*	0
AUG 14			1*	0
AUG 15			0	0
AUG 18	0.33	1.52	0	0
AUG 25	0.15	1.20	0	0
JUL				
JUL 7	0.21	1.44	0	0
JUL 14	0.10	1.31	0	0
JUL 21	0.17	1.29	0	0
JUL 28	0.10	1.36	0	0

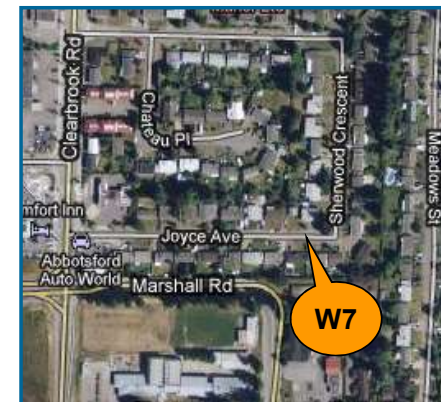
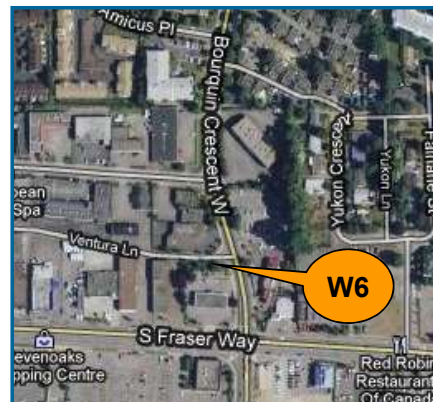
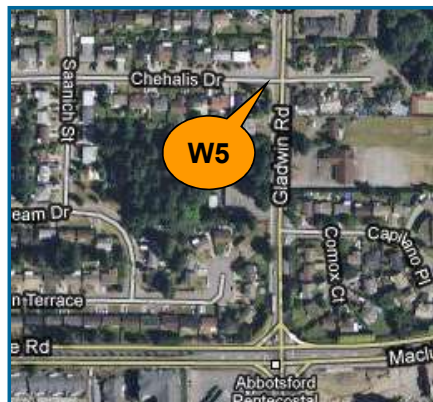
Blank Cell = No Data Collected

W6	Turbidity	Total Chlorine	Total Coliforms	E. Coli
Units	NTU	ppm	counts	counts
Target	< 1.0	0.2 - 2.2	< 10	0
SEP				
SEP 1	0.15	1.26	0	0
SEP 9	0.19	0.91	0	0
SEP 15	0.19	1.20	0	0
SEP 22	0.23	1.20	0	0
SEP 29	0.29	1.10	0	0
AUG				
AUG 5	0.12	1.07	0	0
AUG 11	0.13	0.77	0	0
AUG 18	0.13	0.89	0	0
AUG 25	0.17	1.12	0	0
JUL				
JUL 7	0.18	1.32	0	0
JUL 14	0.08	1.22	0	0
JUL 21	0.12	1.12	0	0
JUL 28	0.13	1.17	0	0

Blank Cell = No Data Collected

W7	Turbidity	Total Chlorine	Total Coliforms	E. Coli
Units	NTU	ppm	counts	counts
Target	< 1.0	0.2 - 2.2	< 10	0
SEP				
SEP 1	0.16	0.58	0	0
SEP 9	0.09	0.67	0	0
SEP 15	0.12	0.66	0	0
SEP 22	0.08	0.70	0	0
SEP 29	0.13	0.70	0	0
AUG				
AUG 5	0.07	0.93	0	0
AUG 11	0.12	0.77	0	0
AUG 18	0.13	0.78	0	0
AUG 25	0.23	0.71	0	0
JUL				
JUL 7	0.06	0.82	0	0
JUL 14	0.07	0.76	0	0
JUL 21	0.12	0.92	0	0
JUL 28	0.10	0.96	0	0

Blank Cell = No Data Collected



Abbotsford Water Distribution System

Recent Water Quality Results

Updated: 10/1/2020



W8	Turbidity	Total Chlorine	Total Coliforms	E. Coli
Units	NTU	ppm	counts	counts
Target	< 1.0	0.2 - 2.2	< 10	0
SEP				
SEP 1	0.13	0.64	0	0
SEP 9	0.14	0.59	0	0
SEP 15	0.20	0.43	0	0
SEP 22	0.15	0.46	0	0
SEP 29	0.18	0.53	0	0
AUG				
AUG 5	0.13	0.71	0	0
AUG 11	0.13	0.58	0	0
AUG 18	0.21	0.49	0	0
AUG 25	0.18	0.44	0	0
JUL				
JUL 7	0.23	0.51	0	0
JUL 14	0.17	0.55	0	0
JUL 21	0.19	0.69	0	0
JUL 28	0.16	0.70	0	0

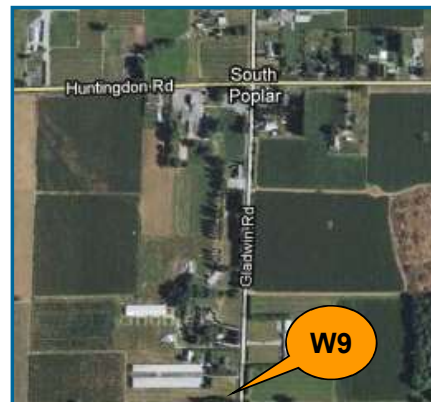
Blank Cell = No Data Collected

W9	Turbidity	Total Chlorine	Total Coliforms	E. Coli
Units	NTU	ppm	counts	counts
Target	< 1.0	0.2 - 2.2	< 10	0
SEP				
SEP 1	0.14	0.71	0	0
SEP 9	0.14	0.71	0	0
SEP 15	0.16	0.70	0	0
SEP 22	0.10	0.62	0	0
SEP 29	0.13	0.62	0	0
AUG				
AUG 5	0.09	0.88	0	0
AUG 11	0.17	0.72	0	0
AUG 18	0.09	0.64	0	0
AUG 25	0.12	ND****	0	0
JUL				
JUL 7	0.08	0.74	0	0
JUL 14	0.64	0.79	0	0
JUL 21	0.18	0.58	0	0
JUL 28	0.10	0.34	0	0

Blank Cell = No Data Collected; ND = Non-Detect

W11	Turbidity	Total Chlorine	Total Coliforms	E. Coli
Units	NTU	ppm	counts	counts
Target	< 1.0	0.2 - 2.2	< 10	0
SEP				
SEP 1	0.14	0.85	0	0
SEP 9	0.20	0.83	0	0
SEP 15	0.17	0.79	0	0
SEP 22	0.13	0.82	0	0
SEP 29	0.19	0.77	0	0
AUG				
AUG 5	0.19	1.05	0	0
AUG 11	0.23	0.84	0	0
AUG 18	0.27	0.98	0	0
AUG 25	0.20	0.92	0	0
JUL				
JUL 7	0.13	0.76	0	0
JUL 14	0.10	0.83	0	0
JUL 21	0.18	0.92	0	0
JUL 28	0.13	1.03	0	0

Blank Cell = No Data Collected



Abbotsford Water Distribution System

Recent Water Quality Results

Updated: 10/1/2020



W13	Turbidity	Total Chlorine	Total Coliforms	E. Coli
Units	NTU	ppm	counts	counts
Target	< 1.0	0.2 - 2.2	< 10	0
SEP				
SEP 1	0.20	0.30	0	0
SEP 9	0.17	0.75	0	0
SEP 15	0.16	0.29	0	0
SEP 22	0.16	0.14	0	0
SEP 29	0.20	0.40	0	0
AUG				
AUG 5	0.16	0.94	0	0
AUG 11	0.23	0.49	0	0
AUG 15				
AUG 18	0.21	0.46	2*	0
AUG 25	0.23	0.26	0	0
JUL				
JUL 7	0.15	0.69	0	0
JUL 14	0.07	0.77	0	0
JUL 21	0.14	0.27	0	0
JUL 28	0.14	0.81	0	0

Blank Cell = No Data Collected

W14	Turbidity	Total Chlorine	Total Coliforms	E. Coli
Units	NTU	ppm	counts	counts
Target	< 1.0	0.2 - 2.2	< 10	0
SEP				
SEP 1	0.11	0.95	0	0
SEP 9	0.16	1.06	0	0
SEP 15	0.19	0.99	0	0
SEP 22	0.25	1.24	0	0
SEP 29	0.23	0.91	0	0
AUG				
AUG 5	0.15	1.16	0	0
AUG 11	0.20	0.70	0	0
AUG 15				
AUG 18	0.18	1.12	0	0
AUG 25	0.21	1.02	0	0
JUL				
JUL 7	0.11	0.94	0	0
JUL 14	0.12	0.97	0	0
JUL 21	0.19	0.93	0	0
JUL 28	0.09	1.15	0	0

Blank Cell = No Data Collected

W15	Turbidity	Total Chlorine	Total Coliforms	E. Coli
Units	NTU	ppm	counts	counts
Target	< 1.0	0.2 - 2.2	< 10	0
SEP				
SEP 1	0.13	1.01	0	0
SEP 9	0.17	1.26	0	0
SEP 15	0.15	1.02	0	0
SEP 22	0.17	1.05	0	0
SEP 29	0.22	1.10	0	0
AUG				
AUG 5	0.18	1.13	0	0
AUG 11	0.52	2.26	0	0
AUG 15			9*	0
AUG 18	0.23	1.50	0	0
AUG 25	0.13	1.00	0	0
JUL				
JUL 7	0.20	1.23	0	0
JUL 14	0.11	1.25	0	0
JUL 21	0.13	1.26	0	0
JUL 28	0.11	1.35	0	0

Blank Cell = No Data Collected



Abbotsford Water Distribution System

Recent Water Quality Results

Updated: 10/1/2020



W16	Turbidity	Total Chlorine	Total Coliforms	E. Coli
Units	NTU	ppm	counts	counts
Target	< 1.0	0.2 - 2.2	< 10	0
SEP				
SEP 1	0.18	0.70	0	0
SEP 9	0.19	0.69	0	0
SEP 15	0.17	0.69	0	0
SEP 22	0.15	0.73	0	0
SEP 29	0.20	0.68	0	0
AUG				
AUG 5	0.16	0.90	0	0
AUG 11	0.19	0.74	0	0
AUG 18	0.19	0.74	0	0
AUG 25	0.23	0.71	0	0
AUG 26				
JUL				
JUL 7	0.12	0.77	0	0
JUL 14	0.10	0.82	0	0
JUL 21	0.11	0.88	0	0
JUL 28	0.16	0.97	0	0
Blank Cell = No Data Collected				



Abbotsford Water Distribution System

Recent Water Quality Results

Updated: 10/1/2020



Parameter	Description	Acceptable Range
Turbidity	Suspended matter that interferes with the clarity of the water. While not a health concern itself, turbidity is an indicator of possible contamination.	There are no regulations for distribution system turbidity; water system operators aim for less than 1.0 NTU.
Total Chlorine	Used to monitor the level of disinfectant used to inactivate microorganisms such as bacteria and viruses.	There are no regulations for distribution system total chlorine; system operators aim to maintain 0.2 - 2.2 ppm. As long as there are no total coliforms, lower values are not a concern. Higher values are not deemed a health concern unless they exceed the World Health Organization's recommended limit of 5 ppm.
Total Coliforms	A group of bacteria that generally do not cause human disease, but their presence in water may indicate possible contamination.	The BC Drinking Water Act stipulates that no more than 10% of samples during a 30-day period may be positive for Total Coliforms and that no single sample may contain more than 10 counts.
E. Coli	A member of the Total Coliform group and its presence in water indicates contamination.	The BC Drinking Water Act stipulates that no E.Coli should be detected in drinking water.

Note: Turbidity and Total Chlorine are measured with field instruments. Result trends are used as indicators of significant water quality changes; specific values are not necessarily accurate.

* Total Coliforms were detected at E4, W5 and W13 in mid-August. Samples were taken regularly until they were non-detect and no *E. coli* was detected. Staff were in regular communication with Fraser Health and treatment was adjusted to reflect the changes in the raw water quality.

**Far end of the system. Operations flush this area regularly. *E. coli* and Total Coliforms were non-detect.

***Total Coliforms were detected at E8 on Jul 21, 2020. A resample was taken on the 22nd and the results were non-detect.

**** Due to an operational malfunction. *E. coli* and Total Coliforms were non-detect.