

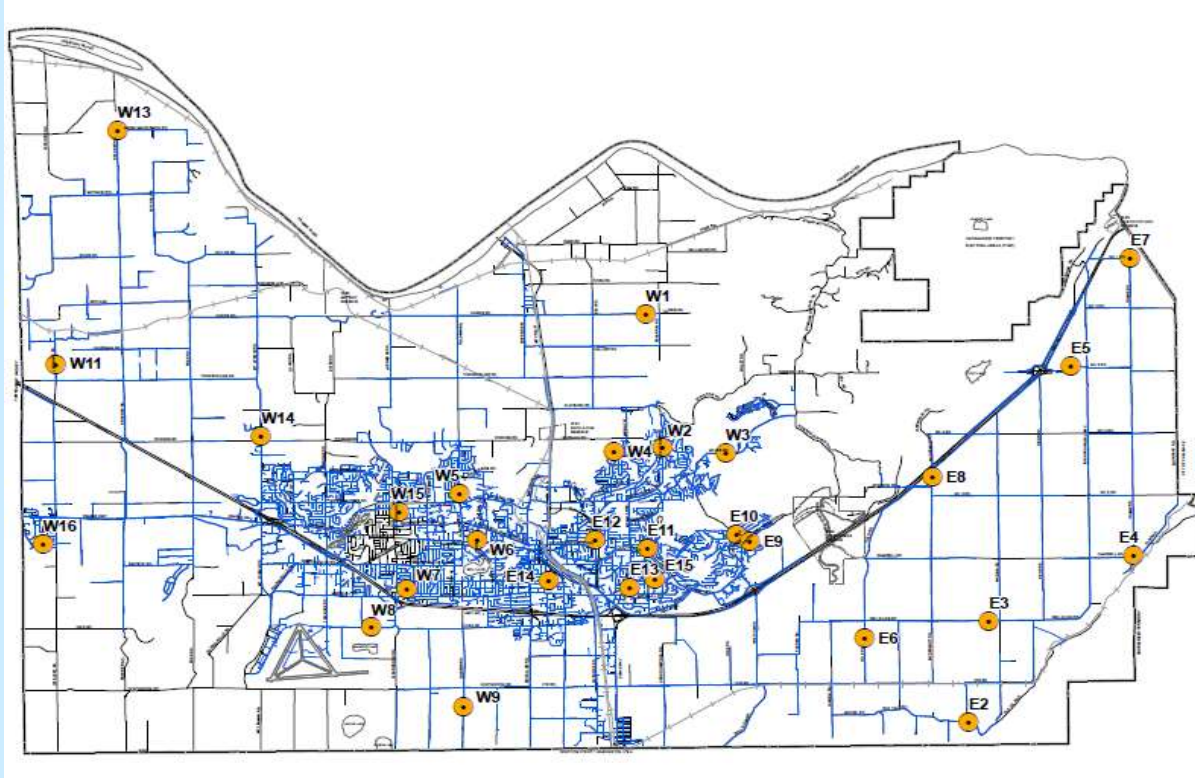
Abbotsford Water Distribution System

Recent Water Quality Results

Updated: 6/1/2020



Sample Locations



- Refer to following pages for results.
- Water quality parameter descriptions on last page.

APPROVED

By risaac at 10:38 am, Jul 24, 2020



APPROVED

By tbowie at 1:30 pm, Jul 27, 2020



Questions?
Engineering
604-864-5514
eng-info@abbotsford.ca

Abbotsford Water Distribution System

Recent Water Quality Results

Updated: 6/1/2020



E2	Turbidity	Total Chlorine	Total Coliforms	E.Coli
Units	NTU	ppm	counts	counts
Target	< 1.0	0.2 - 1.2	< 10	0
MAY				
MAY 5	0.09	1.04	0	0
MAY 12	0.27	0.95	0	0
MAY 20	0.15	0.83	0	0
MAY 26	0.07	0.92	0	0
APR				
APR 7	0.10	1.22	0	0
APR 15	0.08	1.13	0	0
APR 21	0.15	1.06	0	0
APR 28	0.23	0.87	0	0
MAR				
MAR 3	0.21	1.31	0	0
MAR 10	0.13	1.23	0	0
MAR 17	0.19	1.29	0	0
MAR 24	0.14	1.24	0	0
MAR 31	0.23	1.25	0	0

Blank Cell = No Data Collected

E3	Turbidity	Total Chlorine	Total Coliforms	E.Coli
Units	NTU	ppm	counts	counts
Target	< 1.0	0.2 - 1.2	< 10	0
MAY				
MAY 5	0.11	0.88	0	0
MAY 12	0.13	0.94	0	0
MAY 20	0.19	0.76	0	0
MAY 26	0.07	0.66	0	0
APR				
APR 7	0.11	1.01	0	0
APR 15	0.17	0.90	0	0
APR 21	0.17	0.87	0	0
APR 28	0.14	0.74	0	0
MAR				
MAR 3	0.11	1.04	0	0
MAR 10	0.20	1.07	0	0
MAR 17	0.12	1.05	0	0
MAR 24	0.57	1.05	0	0
MAR 31	0.17	1.01	0	0

Blank Cell = No Data Collected

E4	Turbidity	Total Chlorine	Total Coliforms	E.Coli
Units	NTU	ppm	counts	counts
Target	< 1.0	0.2 - 1.2	< 10	0
MAY				
MAY 5	0.11	0.88	0	0
MAY 12	0.19	0.82	0	0
MAY 20	0.20	0.74	0	0
MAY 26	0.10	0.76	0	0
APR				
APR 7	0.08	1.09	0	0
APR 15	0.24	1.04	0	0
APR 21	0.23	0.86	0	0
APR 28	0.12	0.86	0	0
MAR				
MAR 3	0.09	1.05	0	0
MAR 10	0.20	1.09	0	0
MAR 17	0.14	1.05	0	0
MAR 24	0.40	1.03	0	0
MAR 31	0.25	1.03	0	0

Blank Cell = No Data Collected



Abbotsford Water Distribution System

Recent Water Quality Results

Updated: 6/1/2020



E5	Turbidity	Total Chlorine	Total Coliforms	E. Coli
Units	NTU	ppm	counts	counts
Target	< 1.0	0.2 - 1.2	< 10	0
MAY				
MAY 5	0.07	0.54	0	0
MAY 12	0.15	0.57	0	0
MAY 20	0.12	0.51	0	0
MAY 26	0.14	0.40	0	0
APR				
APR 7	0.14	0.77	0	0
APR 15	0.09	0.74	0	0
APR 21	0.07	0.72	0	0
APR 28	0.06	0.50	0	0
MAR				
MAR 3	0.12	0.88	0	0
MAR 10	0.11	0.74	0	0
MAR 17	0.24	0.85	0	0
MAR 24	0.18	0.84	0	0
MAR 31	0.09	0.85	0	0

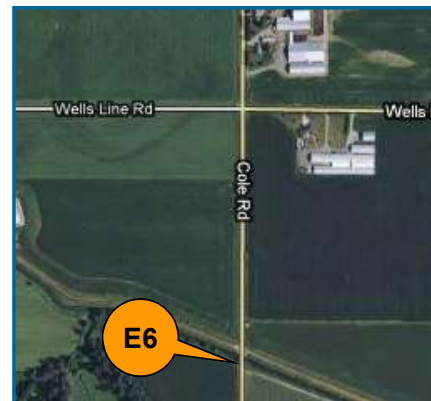
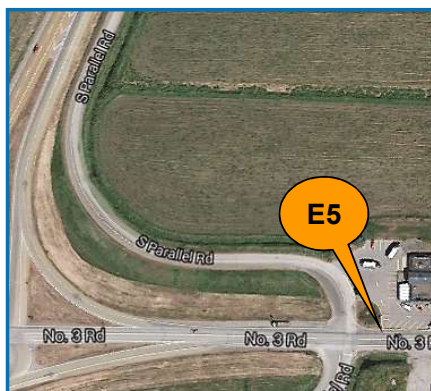
Blank Cell = No Data Collected

E6	Turbidity	Total Chlorine	Total Coliforms	E. Coli
Units	NTU	ppm	counts	counts
Target	< 1.0	0.2 - 1.2	< 10	0
MAY				
MAY 5	0.08	1.09	0	0
MAY 12	0.21	0.93	0	0
MAY 20	0.16	0.86	0	0
MAY 26	0.06	0.93	0	0
APR				
APR 7	0.17	1.24	0	0
APR 15	0.19	1.13	0	0
APR 21	0.26	0.99	0	0
APR 28	0.18	0.88	0	0
MAR				
MAR 3	0.09	1.33	0	0
MAR 10	0.17	1.28	0	0
MAR 17	0.12	1.29	0	0
MAR 24	0.16	1.22	0	0
MAR 31	0.25	1.26	0	0

Blank Cell = No Data Collected

E7	Turbidity	Total Chlorine	Total Coliforms	E. Coli
Units	NTU	ppm	counts	counts
Target	< 1.0	0.2 - 1.2	< 10	0
MAY				
MAY 5	0.09	0.29	0	0
MAY 12	0.12	0.45	0	0
MAY 20	0.13	0.35	0	0
MAY 26	0.07	0.32	0	0
APR				
APR 7	0.17	0.63	0	0
APR 15	0.23	0.61	0	0
APR 21	0.06	0.69	0	0
APR 28	0.15	0.46	0	0
MAR				
MAR 3	0.09	0.83	0	0
MAR 10	0.22	0.72	0	0
MAR 17	0.11	0.71	0	0
MAR 24	0.25	0.78	0	0
MAR 31	0.14	0.80	0	0

Blank Cell = No Data Collected



Abbotsford Water Distribution System

Recent Water Quality Results

Updated: 6/1/2020



E8	Turbidity	Total Chlorine	Total Coliforms	E. Coli
Units	NTU	ppm	counts	counts
Target	< 1.0	0.2 - 1.2	< 10	0
MAY				
MAY 5	0.07	0.73	0	0
MAY 12	0.57	0.96	0	0
MAY 20	0.19	0.56	0	0
MAY 26	0.07	0.51	0	0
APR				
APR 7	0.31	0.91	0	0
APR 15	0.46	0.81	0	0
APR 21	0.32	0.79	0	0
APR 28	0.27	0.67	0	0
MAR				
MAR 3	0.33	1.00	0	0
MAR 10	0.27	0.93	0	0
MAR 17	0.40	0.93	0	0
MAR 24	0.35	1.04	0	0
MAR 31	0.15	0.91	0	0

Blank Cell = No Data Collected

E9	Turbidity	Total Chlorine	Total Coliforms	E. Coli
Units	NTU	ppm	counts	counts
Target	< 1.0	0.2 - 1.2	< 10	0
MAY				
MAY 5	0.11	1.10	0	0
MAY 12	0.09	1.09	0	0
MAY 20	0.15	1.01	0	0
MAY 26	0.10	1.09	0	0
APR				
APR 7	0.09	1.29	0	0
APR 15	0.09	1.30	0	0
APR 21	0.11	1.15	0	0
APR 28	0.12	1.00	0	0
MAR				
MAR 3	0.10	1.28	0	0
MAR 10	0.10	1.33	0	0
MAR 17	0.13	1.35	0	0
MAR 24	0.09	1.28	0	0
MAR 31	0.24	1.32	0	0

Blank Cell = No Data Collected

E10	Turbidity	Total Chlorine	Total Coliforms	E. Coli
Units	NTU	ppm	counts	counts
Target	< 1.0	0.2 - 1.2	< 10	0
MAY				
MAY 5	0.14	1.13	0	0
MAY 12	0.10	0.99	0	0
MAY 20	0.12	1.02	0	0
MAY 26	0.06	1.07	0	0
APR				
APR 7	0.12	1.29	0	0
APR 15	0.08	1.23	0	0
APR 21	0.15	1.15	0	0
APR 28	0.17	0.97	0	0
MAR				
MAR 3	0.11	1.35	0	0
MAR 10	0.08	1.32	0	0
MAR 17	0.08	1.35	0	0
MAR 24	0.07	1.29	0	0
MAR 31	0.33	1.25	0	0

Blank Cell = No Data Collected



Abbotsford Water Distribution System

Recent Water Quality Results

Updated: 6/1/2020



E11	Turbidity	Total Chlorine	Total Coliforms	E.Coli
Units	NTU	ppm	counts	counts
Target	< 1.0	0.2 - 1.2	< 10	0
MAY				
MAY 5	0.15	1.05	0	0
MAY 12	0.10	1.08	0	0
MAY 20	0.12	1.00	0	0
MAY 26	0.06	1.14	0	0
APR				
APR 7	0.15	1.25	0	0
APR 15	0.11	1.24	0	0
APR 21	0.12	1.16	0	0
APR 28	0.18	1.00	0	0
MAR				
MAR 3	0.16	1.37	0	0
MAR 10	0.09	1.16	0	0
MAR 17	0.28	1.38	0	0
MAR 24	0.28	1.31	0	0
MAR 31	0.18	1.33	0	0

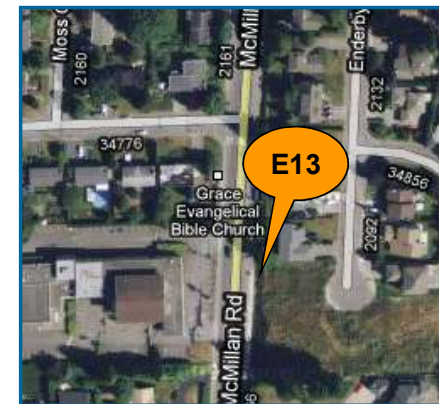
Blank Cell = No Data Collected

E12	Turbidity	Total Chlorine	Total Coliforms	E.Coli
Units	NTU	ppm	counts	counts
Target	< 1.0	0.2 - 1.2	< 10	0
MAY				
MAY 5	0.13	1.06	0	0
MAY 12	0.22	1.08	0	0
MAY 20	0.10	1.04	0	0
MAY 26	0.06	1.05	0	0
APR				
APR 7	0.12	1.25	0	0
APR 15	0.08	1.26	0	0
APR 21	0.08	1.19	0	0
APR 28	0.05	1.08	0	0
MAR				
MAR 3	0.09	1.45	0	0
MAR 10	0.12	1.32	0	0
MAR 17	0.10	1.35	0	0
MAR 24	0.07	1.38	0	0
MAR 31	0.22	1.43	0	0

Blank Cell = No Data Collected

E13	Turbidity	Total Chlorine	Total Coliforms	E.Coli
Units	NTU	ppm	counts	counts
Target	< 1.0	0.2 - 1.2	< 10	0
MAY				
MAY 5	0.10	1.06	0	0
MAY 12	0.09	1.05	0	0
MAY 20	0.16	1.02	0	0
MAY 26	0.06	1.00	0	0
APR				
APR 7	0.08	1.26	0	0
APR 15	0.14	1.27	0	0
APR 21	0.13	1.16	0	0
APR 28	0.05	1.05	0	0
MAR				
MAR 3	0.08	1.35	0	0
MAR 10	0.24	1.28	0	0
MAR 17	0.09	1.25	0	0
MAR 24	0.27	1.32	0	0
MAR 31	0.21	1.29	0	0

Blank Cell = No Data Collected



Abbotsford Water Distribution System

Recent Water Quality Results

Updated: 6/1/2020



E14	Turbidity	Total Chlorine	Total Coliforms	E. Coli
Units	NTU	ppm	counts	counts
Target	< 1.0	0.2 - 1.2	< 10	0
MAY				
MAY 5	0.06	0.65	0	0
MAY 12	0.07	0.91	0	0
MAY 20	0.07	0.85	0	0
MAY 26	0.05	1.00	0	0
APR				
APR 7	0.15	0.77	0	0
APR 15	0.16	0.10	0	0
APR 21	0.08	0.16	0	0
APR 28	0.08	0.84	0	0
MAR				
MAR 3	0.06	1.25	0	0
MAR 10	0.08	0.79	0	0
MAR 17	0.06	0.88	0	0
MAR 24	0.86	0.86	0	0
MAR 31	0.11	0.49	0	0

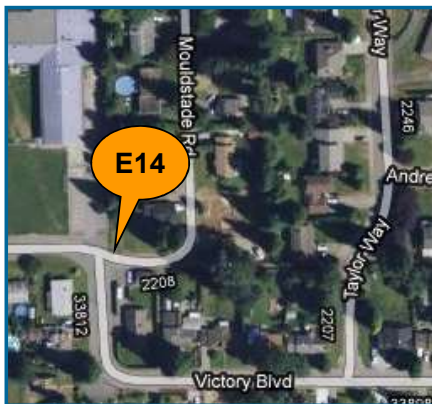
Blank Cell = No Data Collected

E15	Turbidity	Total Chlorine	Total Coliforms	E. Coli
Units	NTU	ppm	counts	counts
Target	< 1.0	0.2 - 1.2	< 10	0
MAY				
MAY 5	0.12	1.20	0	0
MAY 12	0.11	1.01	0	0
MAY 20	0.15	0.94	0	0
MAY 26	0.08	1.16	0	0
APR				
APR 7	0.21	1.11	0	0
APR 15	0.09	1.33	0	0
APR 21	0.16	1.10	0	0
APR 28	0.08	0.99	0	0
MAR				
MAR 3	0.14	1.55	0	0
MAR 10	0.19	1.44	0	0
MAR 17	0.12	1.27	0	0
MAR 24	0.10	1.20	0	0
MAR 31	0.25	1.37	0	0

Blank Cell = No Data Collected

W1	Turbidity	Total Chlorine	Total Coliforms	E. Coli
Units	NTU	ppm	counts	counts
Target	< 1.0	0.2 - 1.2	< 10	0
MAY				
MAY 5	0.09	1.03	0	0
MAY 12	0.14	0.91	0	0
MAY 20	0.06	0.95	0	0
MAY 26	0.20	1.04	0	0
APR				
APR 7	0.19	1.18	0	0
APR 15	0.10	1.20	0	0
APR 21	0.15	1.03	0	0
APR 28	0.08	0.92	0	0
MAR				
MAR 3	0.14	1.30	0	0
MAR 10	0.12	1.30	0	0
MAR 17	0.19	1.04	0	0
MAR 24	0.18	1.19	0	0
MAR 31	0.30	1.23	0	0

Blank Cell = No Data Collected



Abbotsford Water Distribution System

Recent Water Quality Results

Updated: 6/1/2020



W2	Turbidity	Total Chlorine	Total Coliforms	E. Coli
Units	NTU	ppm	counts	counts
Target	< 1.0	0.2 - 1.2	< 10	0
MAY				
MAY 5	0.12	1.07	0	0
MAY 12	0.16	1.04	0	0
MAY 20	0.06	0.92	0	0
MAY 26	0.15	0.99	0	0
APR				
APR 7	0.12	1.30	0	0
APR 15	0.11	1.25	0	0
APR 21	0.11	1.12	0	0
APR 28	0.12	0.93	0	0
MAR				
MAR 3	0.14	1.53	0	0
MAR 10	0.20	1.29	0	0
MAR 17	0.15	1.39	0	0
MAR 24	0.30	1.29	0	0
MAR 31	0.21	1.42	0	0

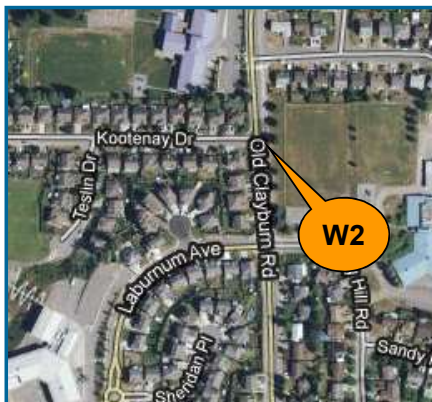
Blank Cell = No Data Collected

W3	Turbidity	Total Chlorine	Total Coliforms	E. Coli
Units	NTU	ppm	counts	counts
Target	< 1.0	0.2 - 1.2	< 10	0
MAY				
MAY 5	0.08	0.99	0	0
MAY 12	0.13	1.11	0	0
MAY 20	0.08	1.08	0	0
MAY 26	0.17	0.97	0	0
APR				
APR 7	0.09	1.20	0	0
APR 15	0.13	1.18	0	0
APR 21	0.11	1.15	0	0
APR 28	0.06	0.98	0	0
MAR				
MAR 3	0.16	1.31	0	0
MAR 10	0.22	1.37	0	0
MAR 17	0.12	1.28	0	0
MAR 24	0.26	1.29	0	0
MAR 31	0.22	1.48	0	0

Blank Cell = No Data Collected

W4	Turbidity	Total Chlorine	Total Coliforms	E. Coli
Units	NTU	ppm	counts	counts
Target	< 1.0	0.2 - 1.2	< 10	0
MAY				
MAY 5	0.11	1.03	0	0
MAY 12	0.18	0.91	0	0
MAY 20	0.04	0.89	0	0
MAY 26	0.19	1.00	0	0
APR				
APR 7	0.10	1.13	0	0
APR 15	0.14	1.24	0	0
APR 21	0.15	1.09	0	0
APR 28	0.12	0.86	0	0
MAR				
MAR 3	0.14	1.32	0	0
MAR 10	0.14	0.99	0	0
MAR 17	0.15	0.83	0	0
MAR 24	0.18	0.71	0	0
MAR 31	0.14	0.63	0	0

Blank Cell = No Data Collected



Abbotsford Water Distribution System

Recent Water Quality Results

Updated: 6/1/2020



W5	Turbidity	Total Chlorine	Total Coliforms	E. Coli
Units	NTU	ppm	counts	counts
Target	< 1.0	0.2 - 1.2	< 10	0
MAY				
MAY 5	0.11	1.31	0	0
MAY 12	0.12	1.10	0	0
MAY 20	0.08	1.13	0	0
MAY 26	0.10	1.18	0	0
APR				
APR 7	0.08	1.35	0	0
APR 15	0.13	1.37	0	0
APR 21	0.09	1.22	0	0
APR 28	0.08	1.21	0	0
MAR				
MAR 3	0.21	1.57	0	0
MAR 10	0.17	1.42	0	0
MAR 17	0.18	1.43	0	0
MAR 24	0.14	1.54	0	0
MAR 31	0.28	1.53	0	0

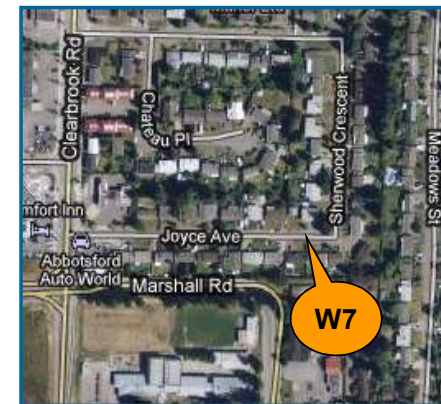
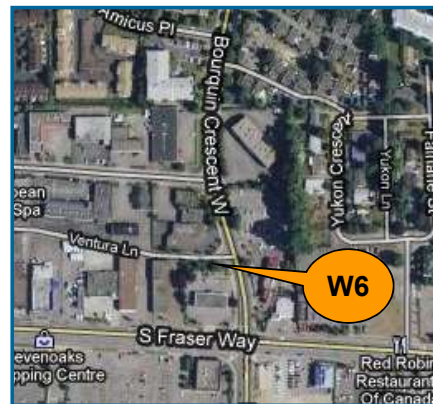
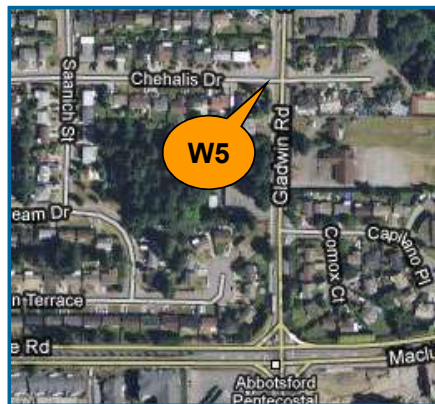
Blank Cell = No Data Collected

W6	Turbidity	Total Chlorine	Total Coliforms	E. Coli
Units	NTU	ppm	counts	counts
Target	< 1.0	0.2 - 1.2	< 10	0
MAY				
MAY 5	0.08	1.21	0	0
MAY 12	0.11	1.10	0	0
MAY 20	0.07	1.05	0	0
MAY 26	0.08	1.20	0	0
APR				
APR 7	0.14	1.29	0	0
APR 15	0.13	1.32	0	0
APR 21	0.10	1.18	0	0
APR 28	0.06	1.14	0	0
MAR				
MAR 3	0.13	1.55	0	0
MAR 10	0.13	1.35	0	0
MAR 17	0.14	1.37	0	0
MAR 24	0.13	1.36	0	0
MAR 31	0.18	1.31	0	0

Blank Cell = No Data Collected

W7	Turbidity	Total Chlorine	Total Coliforms	E. Coli
Units	NTU	ppm	counts	counts
Target	< 1.0	0.2 - 1.2	< 10	0
MAY				
MAY 5	0.07	0.71	0	0
MAY 12	0.12	0.80	0	0
MAY 20	0.07	0.78	0	0
MAY 26	0.14	0.78	0	0
APR				
APR 7	0.07	0.82	0	0
APR 15	0.10	0.63	0	0
APR 21	0.07	0.58	0	0
APR 28	0.07	0.57	0	0
MAR				
MAR 3	0.17	0.68	0	0
MAR 10	0.18	0.68	0	0
MAR 17	0.13	0.76	0	0
MAR 24	0.15	0.77	0	0
MAR 31	0.05	0.73	0	0

Blank Cell = No Data Collected



Abbotsford Water Distribution System

Recent Water Quality Results

Updated: 6/1/2020



W8	Turbidity	Total Chlorine	Total Coliforms	E. Coli
Units	NTU	ppm	counts	counts
Target	< 1.0	0.2 - 1.2	< 10	0
MAY				
MAY 5	0.40	0.69	0	0
MAY 12	0.18	0.70	0	0
MAY 20	0.09	0.73	0	0
MAY 26	0.16	0.58	0	0
APR				
APR 7	0.09	0.78	0	0
APR 15	0.12	0.61	0	0
APR 21	0.09	0.61	0	0
APR 28	0.14	0.22	0	0
MAR				
MAR 3	0.10	0.70	0	0
MAR 10	0.18	0.59	0	0
MAR 17	0.16	0.56	0	0
MAR 24	0.16	0.48	0	0
MAR 31	0.18	0.61	0	0

Blank Cell = No Data Collected

W9	Turbidity	Total Chlorine	Total Coliforms	E. Coli
Units	NTU	ppm	counts	counts
Target	< 1.0	0.2 - 1.2	< 10	0
MAY				
MAY 5	0.07	0.68		
MAY 12	0.64	0.79	0	0
MAY 20	0.08	0.58	0	0
MAY 26	0.56	0.54	0	0
APR				
APR 7	0.17	0.63	0	0
APR 15	1.82**	0.07*	0	0
APR 21	0.22	ND*	0	0
APR 28	0.10	0.74	0	0
MAR				
MAR 3	0.32	0.52	0	0
MAR 10	0.19	0.63	0	0
MAR 17	0.26	0.77	0	0
MAR 24	0.40	0.69	0	0
MAR 31	0.11	0.69	0	0

Blank Cell = No Data Collected; ND = Non-Detect

W11	Turbidity	Total Chlorine	Total Coliforms	E. Coli
Units	NTU	ppm	counts	counts
Target	< 1.0	0.2 - 1.2	< 10	0
MAY				
MAY 5	0.08	0.96	0	0
MAY 12	0.25	0.86	0	0
MAY 20	0.05	0.85	0	0
MAY 26	0.21	0.76	0	0
APR				
APR 7	0.17	1.08	0	0
APR 15	0.12	1.13	0	0
APR 21	0.13	1.07	0	0
APR 28	0.13	0.92	0	0
MAR				
MAR 3	0.19	1.29	0	0
MAR 10	0.19	1.12	0	0
MAR 17	0.25	1.03	0	0
MAR 24	0.26	1.03	0	0
MAR 31	0.07	0.97	0	0

Blank Cell = No Data Collected



Abbotsford Water Distribution System

Recent Water Quality Results

Updated: 6/1/2020



W13	Turbidity	Total Chlorine	Total Coliforms	E. Coli
Units	NTU	ppm	counts	counts
Target	< 1.0	0.2 - 1.2	< 10	0
MAY				
MAY 5	0.12	0.50	0	0
MAY 12	0.23	0.58	0	0
MAY 20	0.06	0.50	0	0
MAY 26	0.19	0.36	0	0
APR				
APR 7	0.14	0.97	0	0
APR 15	0.10	0.96	0	0
APR 21	0.17	0.81	0	0
APR 28	0.06	0.73	0	0
MAR				
MAR 3	0.22	0.79	0	0
MAR 10	0.22	0.77	0	0
MAR 17	0.26	1.10	0	0
MAR 24	0.22	0.94	0	0
MAR 31	0.16	0.88	0	0

Blank Cell = No Data Collected

W14	Turbidity	Total Chlorine	Total Coliforms	E. Coli
Units	NTU	ppm	counts	counts
Target	< 1.0	0.2 - 1.2	< 10	0
MAY				
MAY 5	0.09	0.93	0	0
MAY 12	0.13	0.89	0	0
MAY 20	0.06	0.88	0	0
MAY 26	0.14	0.87	0	0
APR				
APR 7	0.10	1.07	0	0
APR 15	0.17	0.94	0	0
APR 21	0.19	0.81	0	0
APR 28	0.07	0.45	0	0
MAR				
MAR 3	0.15	1.14	0	0
MAR 10	0.15	1.09	0	0
MAR 17	0.14	0.57	0	0
MAR 24	0.15	0.59	0	0
MAR 31	0.09	0.60	0	0

Blank Cell = No Data Collected

W15	Turbidity	Total Chlorine	Total Coliforms	E. Coli
Units	NTU	ppm	counts	counts
Target	< 1.0	0.2 - 1.2	< 10	0
MAY				
MAY 5	0.07	1.31	0	0
MAY 12	0.12	1.07	0	0
MAY 20	0.07	1.20	0	0
MAY 26	0.14	1.15	0	0
APR				
APR 7	0.15	1.31	0	0
APR 15	0.07	1.34	0	0
APR 21	0.10	1.20	0	0
APR 28	0.08	1.14	0	0
MAR				
MAR 3	0.16	1.55	0	0
MAR 10	0.21	1.39	0	0
MAR 17	0.15	1.43	0	0
MAR 24	0.22	1.37	0	0
MAR 31	0.24	1.53	0	0

Blank Cell = No Data Collected



Abbotsford Water Distribution System

Recent Water Quality Results

Updated: 6/1/2020



W16	Turbidity	Total Chlorine	Total Coliforms	E. Coli
Units	NTU	ppm	counts	counts
Target	< 1.0	0.2 - 1.2	< 10	0
MAY				
MAY 5	0.16	0.87	0	0
MAY 12	0.30	0.85	0	0
MAY 20	0.06	0.90	0	0
MAY 26	0.27	0.70	0	0
APR				
APR 7	0.16	1.00	0	0
APR 15	0.15	0.90	0	0
APR 21	0.45	0.83	0	0
APR 28	0.10	0.77	0	0
MAR				
MAR 3	0.17	1.04	0	0
MAR 10	0.23	0.92	0	0
MAR 17	0.37	0.74	0	0
MAR 24	0.22	0.90	0	0
MAR 31	0.07	0.86	0	0

Blank Cell = No Data Collected



Abbotsford Water Distribution System

Recent Water Quality Results

Updated: 6/1/2020



Parameter	Description	Acceptable Range
Turbidity	Suspended matter that interferes with the clarity of the water. While not a health concern itself, turbidity is an indicator of possible contamination.	There are no regulations for distribution system turbidity; water system operators aim for less than 1.0 NTU.
Total Chlorine	Used to monitor the level of disinfectant used to inactivate microorganisms such as bacteria and viruses.	There are no regulations for distribution system total chlorine; system operators aim to maintain 0.2 - 1.2 ppm. As long as there are no total coliforms, lower values are not a concern. Higher values are not deemed a health concern unless they exceed the World Health Organization's recommended limit of 5 ppm.
Total Coliforms	A group of bacteria that generally do not cause human disease, but their presence in water may indicate possible contamination.	The BC Drinking Water Act stipulates that no more than 10% of samples during a 30-day period may be positive for Total Coliforms and that no single sample may contain more than 10 counts.
E. Coli	A member of the Total Coliform group and its presence in water indicates contamination.	The BC Drinking Water Act stipulates that no E.Coli should be detected in drinking water.

Note: Turbidity and Total Chlorine are measured with field instruments. Result trends are used as indicators of significant water quality changes; specific values are not necessarily accurate.

* Surface water was diluted by undisinfected well water. Total Coliform and E.Coli counts were non-detect.

**Anomolous result. Resample results below 1 NTU.