

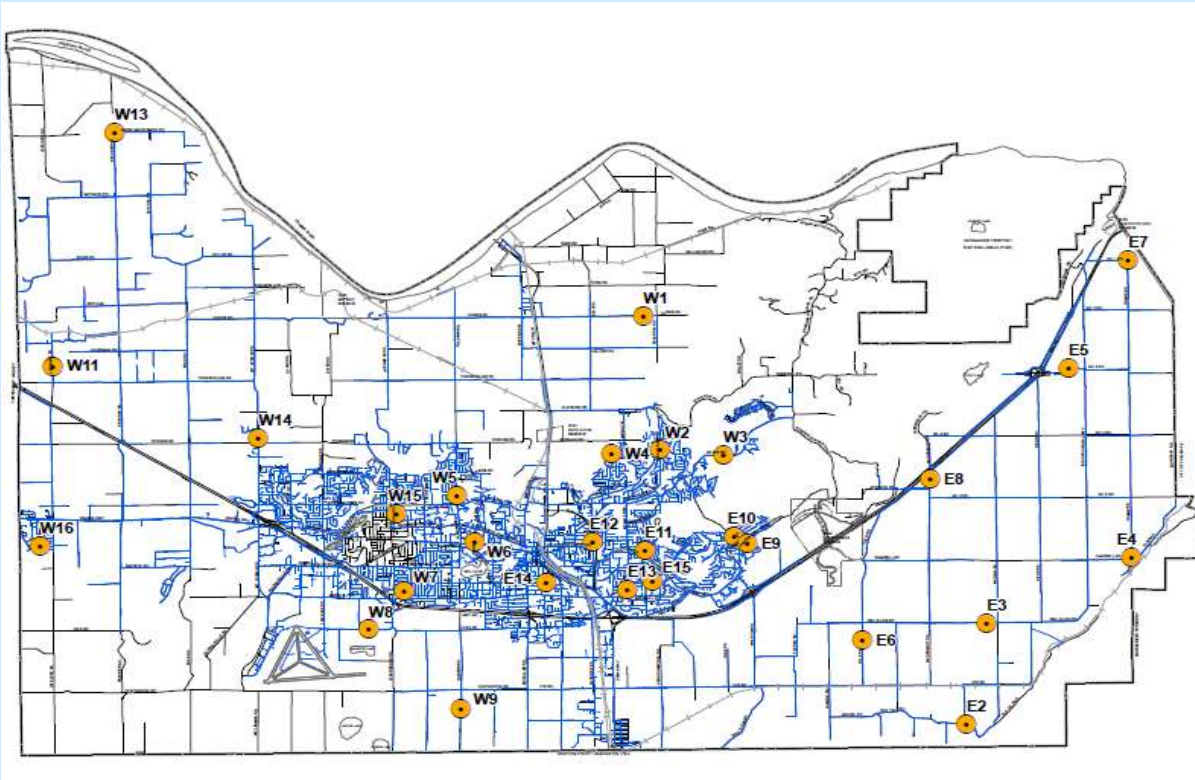
# Abbotsford Water Distribution System

## Recent Water Quality Results

Updated: 7/1/2020



### Sample Locations



- Refer to following pages for results.
- Water quality parameter descriptions on last page.

**APPROVED**

By risaac at 10:38 am, Jul 24, 2020



**APPROVED**

By thowie at 1:29 pm, Jul 27, 2020



**Questions?**  
Engineering  
604-864-5514  
eng-info@abbotsford.ca

# Abbotsford Water Distribution System

## Recent Water Quality Results

Updated: 7/1/2020



E2	Turbidity	Total Chlorine	Total Coliforms	E.Coli
Units	NTU	ppm	counts	counts
Target	< 1.0	0.2 - 1.2	< 10	0
JUN				
JUN 2	0.19	1.17	0	0
JUN 9	0.10	0.93	0	0
JUN 16	0.17	0.94	0	0
JUN 23	0.16	1.13	0	0
JUN 30	0.15	1.17	0	0
MAY				
MAY 5	0.09	1.04	0	0
MAY 12	0.27	0.95	0	0
MAY 20	0.15	0.83	0	0
MAY 26	0.07	0.92	0	0
APR				
APR 7	0.10	1.22	0	0
APR 15	0.08	1.13	0	0
APR 21	0.15	1.06	0	0
APR 28	0.23	0.87	0	0

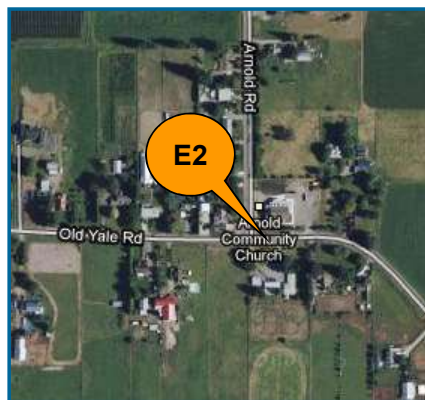
Blank Cell = No Data Collected

E3	Turbidity	Total Chlorine	Total Coliforms	E.Coli
Units	NTU	ppm	counts	counts
Target	< 1.0	0.2 - 1.2	< 10	0
JUN				
JUN 2	0.21	0.73	0	0
JUN 9	0.12	0.80	0	0
JUN 16	0.16	0.73	0	0
JUN 23	0.19	1.00	0	0
JUN 30	0.16	1.06	0	0
MAY				
MAY 5	0.11	0.88	0	0
MAY 12	0.13	0.94	0	0
MAY 20	0.19	0.76	0	0
MAY 26	0.07	0.66	0	0
APR				
APR 7	0.11	1.01	0	0
APR 15	0.17	0.90	0	0
APR 21	0.17	0.87	0	0
APR 28	0.14	0.74	0	0

Blank Cell = No Data Collected

E4	Turbidity	Total Chlorine	Total Coliforms	E.Coli
Units	NTU	ppm	counts	counts
Target	< 1.0	0.2 - 1.2	< 10	0
JUN				
JUN 2	0.14	1.03	0	0
JUN 9	0.11	0.81	0	0
JUN 16	0.17	0.78	0	0
JUN 23	0.13	0.89	0	0
JUN 30	0.10	0.87	0	0
MAY				
MAY 5	0.11	0.88	0	0
MAY 12	0.19	0.82	0	0
MAY 20	0.20	0.74	0	0
MAY 26	0.10	0.76	0	0
APR				
APR 7	0.08	1.09	0	0
APR 15	0.24	1.04	0	0
APR 21	0.23	0.86	0	0
APR 28	0.12	0.86	0	0

Blank Cell = No Data Collected



# Abbotsford Water Distribution System

## Recent Water Quality Results

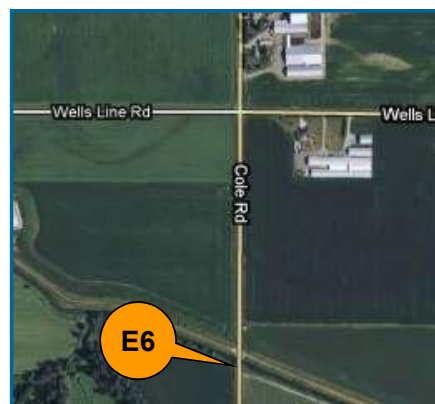
Updated: 7/1/2020



<b>E5</b>	Turbidity	Total Chlorine	Total Coliforms	E. Coli
Units	NTU	ppm	counts	counts
Target	< 1.0	0.2 - 1.2	< 10	0
<b>JUN</b>				
JUN 2	0.20	0.59	0	0
JUN 9	0.12	0.49	0	0
JUN 16	0.12	0.43	0	0
JUN 23	0.13	0.52	0	0
JUN 30	0.12	0.49	0	0
<b>MAY</b>				
MAY 5	0.07	0.54	0	0
MAY 12	0.15	0.57	0	0
MAY 20	0.12	0.51	0	0
MAY 26	0.14	0.40	0	0
<b>APR</b>				
APR 7	0.14	0.77	0	0
APR 15	0.09	0.74	0	0
APR 21	0.07	0.72	0	0
APR 28	0.06	0.50	0	0
Blank Cell = No Data Collected				

<b>E6</b>	Turbidity	Total Chlorine	Total Coliforms	E. Coli
Units	NTU	ppm	counts	counts
Target	< 1.0	0.2 - 1.2	< 10	0
<b>JUN</b>				
JUN 2	0.26	1.10	0	0
JUN 9	0.15	1.04	0	0
JUN 16	0.15	0.95	0	0
JUN 23	0.19	1.11	0	0
JUN 30	0.16	1.13	0	0
<b>MAY</b>				
MAY 5	0.08	1.09	0	0
MAY 12	0.21	0.93	0	0
MAY 20	0.16	0.86	0	0
MAY 26	0.06	0.93	0	0
<b>APR</b>				
APR 7	0.17	1.24	0	0
APR 15	0.19	1.13	0	0
APR 21	0.26	0.99	0	0
APR 28	0.18	0.88	0	0
Blank Cell = No Data Collected				

<b>E7</b>	Turbidity	Total Chlorine	Total Coliforms	E. Coli
Units	NTU	ppm	counts	counts
Target	< 1.0	0.2 - 1.2	< 10	0
<b>JUN</b>				
JUN 2	0.23	0.41	0	0
JUN 9	0.13	0.29	0	0
JUN 16	0.19	0.20	0	0
JUN 23	0.16	0.33	0	0
JUN 30	0.09	0.09	0	0
<b>MAY</b>				
MAY 5	0.09	0.29	0	0
MAY 12	0.12	0.45	0	0
MAY 20	0.13	0.35	0	0
MAY 26	0.07	0.32	0	0
<b>APR</b>				
APR 7	0.17	0.63	0	0
APR 15	0.23	0.61	0	0
APR 21	0.06	0.69	0	0
APR 28	0.15	0.46	0	0
Blank Cell = No Data Collected				



# Abbotsford Water Distribution System

## Recent Water Quality Results

Updated: 7/1/2020



<b>E8</b>	Turbidity	Total Chlorine	Total Coliforms	E. Coli
Units	NTU	ppm	counts	counts
Target	< 1.0	0.2 - 1.2	< 10	0
<b>JUN</b>				
JUN 2	0.34	0.57	0	0
JUN 9	0.12	0.65	0	0
JUN 16	0.17	0.59	0	0
JUN 23	0.18	1.01	0	0
JUN 30	0.14	1.07	0	0
<b>MAY</b>				
MAY 5	0.07	0.73	0	0
MAY 12	0.57	0.96	0	0
MAY 20	0.19	0.56	0	0
MAY 26	0.07	0.51	0	0
<b>APR</b>				
APR 7	0.31	0.91	0	0
APR 15	0.46	0.81	0	0
APR 21	0.32	0.79	0	0
APR 28	0.27	0.67	0	0

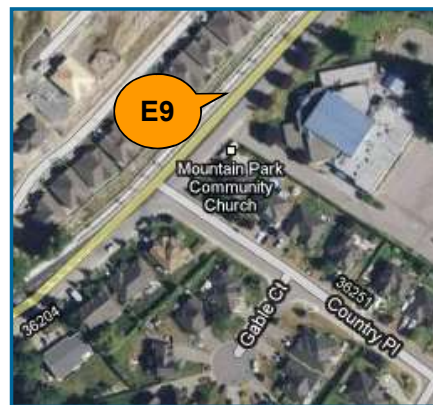
Blank Cell = No Data Collected

<b>E9</b>	Turbidity	Total Chlorine	Total Coliforms	E. Coli
Units	NTU	ppm	counts	counts
Target	< 1.0	0.2 - 1.2	< 10	0
<b>JUN</b>				
JUN 2	0.29	1.03	0	0
JUN 9	0.11	1.08	0	0
JUN 16	0.17	1.05	0	0
JUN 23	0.10	0.99	0	0
JUN 30	0.13	1.10	0	0
<b>MAY</b>				
MAY 5	0.11	1.10	0	0
MAY 12	0.09	1.09	0	0
MAY 20	0.15	1.01	0	0
MAY 26	0.10	1.09	0	0
<b>APR</b>				
APR 7	0.09	1.29	0	0
APR 15	0.09	1.30	0	0
APR 21	0.11	1.15	0	0
APR 28	0.12	1.00	0	0

Blank Cell = No Data Collected

<b>E10</b>	Turbidity	Total Chlorine	Total Coliforms	E. Coli
Units	NTU	ppm	counts	counts
Target	< 1.0	0.2 - 1.2	< 10	0
<b>JUN</b>				
JUN 2	0.14	1.14	0	0
JUN 9	0.09	1.15	0	0
JUN 16	0.17	1.06	0	0
JUN 23	0.23	1.17	0	0
JUN 30	0.13	1.24	0	0
<b>MAY</b>				
MAY 5	0.14	1.13	0	0
MAY 12	0.10	0.99	0	0
MAY 20	0.12	1.02	0	0
MAY 26	0.06	1.07	0	0
<b>APR</b>				
APR 7	0.12	1.29	0	0
APR 15	0.08	1.23	0	0
APR 21	0.15	1.15	0	0
APR 28	0.17	0.97	0	0

Blank Cell = No Data Collected



# Abbotsford Water Distribution System

## Recent Water Quality Results

Updated: 7/1/2020



E11	Turbidity	Total Chlorine	Total Coliforms	E. Coli
Units	NTU	ppm	counts	counts
Target	< 1.0	0.2 - 1.2	< 10	0
<b>JUN</b>				
JUN 2	0.13	1.21	0	0
JUN 9	0.14	0.96	0	0
JUN 16	0.14	1.10	0	0
JUN 23	0.13	1.14	0	0
JUN 30	0.11	1.25	0	0
<b>MAY</b>				
MAY 5	0.15	1.05	0	0
MAY 12	0.10	1.08	0	0
MAY 20	0.12	1.00	0	0
MAY 26	0.06	1.14	0	0
<b>APR</b>				
APR 7	0.15	1.25	0	0
APR 15	0.11	1.24	0	0
APR 21	0.12	1.16	0	0
APR 28	0.18	1.00	0	0
Blank Cell = No Data Collected				

E12	Turbidity	Total Chlorine	Total Coliforms	E. Coli
Units	NTU	ppm	counts	counts
Target	< 1.0	0.2 - 1.2	< 10	0
<b>JUN</b>				
JUN 2	0.12	1.21	0	0
JUN 9	0.09	1.08	0	0
JUN 16	0.15	1.30	0	0
JUN 23	0.11	1.08	0	0
JUN 30	0.16	1.18	0	0
<b>MAY</b>				
MAY 5	0.13	1.06	0	0
MAY 12	0.22	1.08	0	0
MAY 20	0.10	1.04	0	0
MAY 26	0.06	1.05	0	0
<b>APR</b>				
APR 7	0.12	1.25	0	0
APR 15	0.08	1.26	0	0
APR 21	0.08	1.19	0	0
APR 28	0.05	1.08	0	0
Blank Cell = No Data Collected				

E13	Turbidity	Total Chlorine	Total Coliforms	E. Coli
Units	NTU	ppm	counts	counts
Target	< 1.0	0.2 - 1.2	< 10	0
<b>JUN</b>				
JUN 2	0.14	1.10	0	0
JUN 9	0.10	1.05	0	0
JUN 16	0.13	1.03	0	0
JUN 23	0.16	1.04	0	0
JUN 30	0.11	1.15	0	0
<b>MAY</b>				
MAY 5	0.10	1.06	0	0
MAY 12	0.09	1.05	0	0
MAY 20	0.16	1.02	0	0
MAY 26	0.06	1.00	0	0
<b>APR</b>				
APR 7	0.08	1.26	0	0
APR 15	0.14	1.27	0	0
APR 21	0.13	1.16	0	0
APR 28	0.05	1.05	0	0
Blank Cell = No Data Collected				



# Abbotsford Water Distribution System

## Recent Water Quality Results

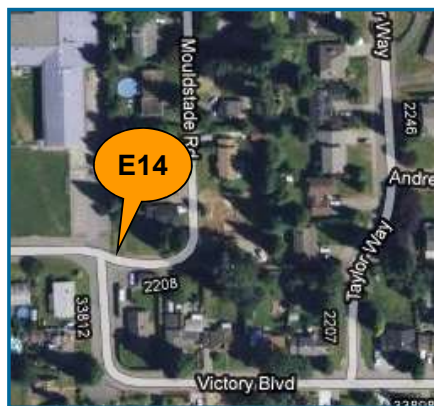
Updated: 7/1/2020



<b>E14</b>	Turbidity	Total Chlorine	Total Coliforms	E. Coli
Units	NTU	ppm	counts	counts
Target	< 1.0	0.2 - 1.2	< 10	0
<b>JUN</b>				
JUN 2	0.15	0.67	0	0
JUN 9	0.04	0.63	0	0
JUN 16	0.20	0.49	0	0
JUN 23	0.17	0.78	0	0
JUN 30	0.07	0.74	0	0
<b>MAY</b>				
MAY 5	0.06	0.65	0	0
MAY 12	0.07	0.91	0	0
MAY 20	0.07	0.85	0	0
MAY 26	0.05	1.00	0	0
<b>APR</b>				
APR 7	0.15	0.77	0	0
APR 15	0.16	0.10	0	0
APR 21	0.08	0.16	0	0
APR 28	0.08	0.84	0	0
Blank Cell = No Data Collected				

<b>E15</b>	Turbidity	Total Chlorine	Total Coliforms	E. Coli
Units	NTU	ppm	counts	counts
Target	< 1.0	0.2 - 1.2	< 10	0
<b>JUN</b>				
JUN 2	0.15	1.22	0	0
JUN 9	0.19	1.13	0	0
JUN 16	0.19	1.10	0	0
JUN 23	0.14	1.02	0	0
JUN 30	0.08	1.26	0	0
<b>MAY</b>				
MAY 5	0.12	1.20	0	0
MAY 12	0.11	1.01	0	0
MAY 20	0.15	0.94	0	0
MAY 26	0.08	1.16	0	0
<b>APR</b>				
APR 7	0.21	1.11	0	0
APR 15	0.09	1.33	0	0
APR 21	0.16	1.10	0	0
APR 28	0.08	0.99	0	0
Blank Cell = No Data Collected				

<b>W1</b>	Turbidity	Total Chlorine	Total Coliforms	E. Coli
Units	NTU	ppm	counts	counts
Target	< 1.0	0.2 - 1.2	< 10	0
<b>JUN</b>				
JUN 2	0.08	1.04	0	0
JUN 9	0.07	1.04	0	0
JUN 16	0.09	0.92	0	0
JUN 23	0.10	1.02	0	0
JUN 30	0.11	1.09	0	0
<b>MAY</b>				
MAY 5	0.09	1.03	0	0
MAY 12	0.14	0.91	0	0
MAY 20	0.06	0.95	0	0
MAY 26	0.20	1.04	0	0
<b>APR</b>				
APR 7	0.19	1.18	0	0
APR 15	0.10	1.20	0	0
APR 21	0.15	1.03	0	0
APR 28	0.08	0.92	0	0
Blank Cell = No Data Collected				



# Abbotsford Water Distribution System

## Recent Water Quality Results

Updated: 7/1/2020



W2	Turbidity	Total Chlorine	Total Coliforms	E. Coli
Units	NTU	ppm	counts	counts
Target	< 1.0	0.2 - 1.2	< 10	0
JUN				
JUN 2	0.08	1.14	0	0
JUN 9	0.15	1.13	0	0
JUN 16	0.08	1.02	0	0
JUN 23	0.14	1.12	0	0
JUN 30	0.13	1.13	0	0
MAY				
MAY 5	0.12	1.07	0	0
MAY 12	0.16	1.04	0	0
MAY 20	0.06	0.92	0	0
MAY 26	0.15	0.99	0	0
APR				
APR 7	0.12	1.30	0	0
APR 15	0.11	1.25	0	0
APR 21	0.11	1.12	0	0
APR 28	0.12	0.93	0	0

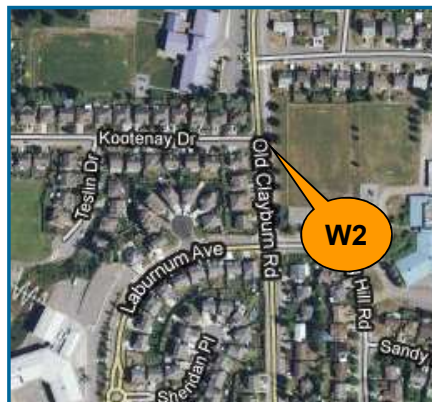
Blank Cell = No Data Collected

W3	Turbidity	Total Chlorine	Total Coliforms	E. Coli
Units	NTU	ppm	counts	counts
Target	< 1.0	0.2 - 1.2	< 10	0
JUN				
JUN 2	0.09	1.06	0	0
JUN 9	0.13	1.06	0	0
JUN 16	0.08	0.91	0	0
JUN 23	0.18	0.95	0	0
JUN 30	0.13	1.04	0	0
MAY				
MAY 5	0.08	0.99	0	0
MAY 12	0.13	1.11	0	0
MAY 20	0.08	1.08	0	0
MAY 26	0.17	0.97	0	0
APR				
APR 7	0.09	1.20	0	0
APR 15	0.13	1.18	0	0
APR 21	0.11	1.15	0	0
APR 28	0.06	0.98	0	0

Blank Cell = No Data Collected

W4	Turbidity	Total Chlorine	Total Coliforms	E. Coli
Units	NTU	ppm	counts	counts
Target	< 1.0	0.2 - 1.2	< 10	0
JUN				
JUN 2	0.08	1.03	0	0
JUN 9	0.08	0.81	0	0
JUN 16	0.11	0.79	0	0
JUN 23	0.26	0.79	0	0
JUN 30	0.08	0.77	0	0
MAY				
MAY 5	0.11	1.03	0	0
MAY 12	0.18	0.91	0	0
MAY 20	0.04	0.89	0	0
MAY 26	0.19	1.00	0	0
APR				
APR 7	0.10	1.13	0	0
APR 15	0.14	1.24	0	0
APR 21	0.15	1.09	0	0
APR 28	0.12	0.86	0	0

Blank Cell = No Data Collected



# Abbotsford Water Distribution System

## Recent Water Quality Results

Updated: 7/1/2020



W5	Turbidity	Total Chlorine	Total Coliforms	E. Coli
Units	NTU	ppm	counts	counts
Target	< 1.0	0.2 - 1.2	< 10	0
<b>JUN</b>				
JUN 2	0.06	1.39	0	0
JUN 9	0.16	1.11	0	0
JUN 16	0.12	1.27	0	0
JUN 23	0.11	1.34	0	0
JUN 30	0.12	1.36	0	0
<b>MAY</b>				
MAY 5	0.11	1.31	0	0
MAY 12	0.12	1.10	0	0
MAY 20	0.08	1.13	0	0
MAY 26	0.10	1.18	0	0
<b>APR</b>				
APR 7	0.08	1.35	0	0
APR 15	0.13	1.37	0	0
APR 21	0.09	1.22	0	0
APR 28	0.08	1.21	0	0

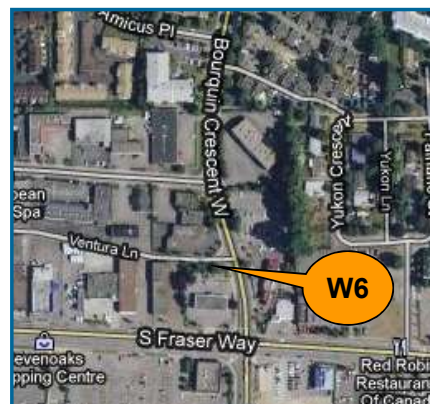
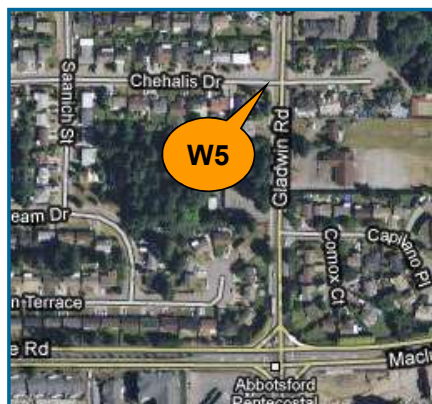
Blank Cell = No Data Collected

W6	Turbidity	Total Chlorine	Total Coliforms	E. Coli
Units	NTU	ppm	counts	counts
Target	< 1.0	0.2 - 1.2	< 10	0
<b>JUN</b>				
JUN 2	0.07	1.36	0	0
JUN 9	0.11	1.17	0	0
JUN 16	0.14	1.18	0	0
JUN 23	0.19	1.22	0	0
JUN 30	0.13	1.28	0	0
<b>MAY</b>				
MAY 5	0.08	1.21	0	0
MAY 12	0.11	1.10	0	0
MAY 20	0.07	1.05	0	0
MAY 26	0.08	1.20	0	0
<b>APR</b>				
APR 7	0.14	1.29	0	0
APR 15	0.13	1.32	0	0
APR 21	0.10	1.18	0	0
APR 28	0.06	1.14	0	0

Blank Cell = No Data Collected

W7	Turbidity	Total Chlorine	Total Coliforms	E. Coli
Units	NTU	ppm	counts	counts
Target	< 1.0	0.2 - 1.2	< 10	0
<b>JUN</b>				
JUN 2	0.05	0.63	0	0
JUN 9	0.06	0.54	0	0
JUN 16	0.05	0.88	0	0
JUN 23	0.10	0.80	0	0
JUN 30	0.11	0.74	0	0
<b>MAY</b>				
MAY 5	0.07	0.71	0	0
MAY 12	0.12	0.80	0	0
MAY 20	0.07	0.78	0	0
MAY 26	0.14	0.78	0	0
<b>APR</b>				
APR 7	0.07	0.82	0	0
APR 15	0.10	0.63	0	0
APR 21	0.07	0.58	0	0
APR 28	0.07	0.57	0	0

Blank Cell = No Data Collected





# Abbotsford Water Distribution System

## Recent Water Quality Results

Updated: 7/1/2020



W8	Turbidity	Total Chlorine	Total Coliforms	E. Coli
Units	NTU	ppm	counts	counts
Target	< 1.0	0.2 - 1.2	< 10	0
<b>JUN</b>				
JUN 2	0.10	0.68	0	0
JUN 9	0.13	0.54	0	0
JUN 16	0.16	0.61	0	0
JUN 23	0.09	0.54	0	0
JUN 30	0.12	0.60	0	0
<b>MAY</b>				
MAY 5	0.40	0.69	0	0
MAY 12	0.18	0.70	0	0
MAY 20	0.09	0.73	0	0
MAY 26	0.16	0.58	0	0
<b>APR</b>				
APR 7	0.09	0.78	0	0
APR 15	0.12	0.61	0	0
APR 21	0.09	0.61	0	0
APR 28	0.14	0.22	0	0

Blank Cell = No Data Collected

W9	Turbidity	Total Chlorine	Total Coliforms	E. Coli
Units	NTU	ppm	counts	counts
Target	< 1.0	0.2 - 1.2	< 10	0
<b>JUN</b>				
JUN 2	0.11	0.46	0	0
JUN 9	0.17	0.59	0	0
JUN 16	0.16	0.65	0	0
JUN 23	0.13	0.70	0	0
JUN 30	0.11	0.66	0	0
<b>MAY</b>				
MAY 5	0.07	0.68		
MAY 12	0.64	0.79	0	0
MAY 20	0.08	0.58	0	0
MAY 26	0.56	0.54	0	0
<b>APR</b>				
APR 7	0.17	0.63	0	0
APR 15	1.82**	0.07*	0	0
APR 21	0.22	ND*	0	0
APR 28	0.10	0.74	0	0

Blank Cell = No Data Collected; ND = Non-Detect

W11	Turbidity	Total Chlorine	Total Coliforms	E. Coli
Units	NTU	ppm	counts	counts
Target	< 1.0	0.2 - 1.2	< 10	0
<b>JUN</b>				
JUN 2	0.12	0.90	0	0
JUN 9	0.10	0.87	0	0
JUN 16	0.10	0.85	0	0
JUN 23	0.11	0.82	0	0
JUN 30	0.11	0.93	0	0
<b>MAY</b>				
MAY 5	0.08	0.96	0	0
MAY 12	0.25	0.86	0	0
MAY 20	0.05	0.85	0	0
MAY 26	0.21	0.76	0	0
<b>APR</b>				
APR 7	0.17	1.08	0	0
APR 15	0.12	1.13	0	0
APR 21	0.13	1.07	0	0
APR 28	0.13	0.92	0	0

Blank Cell = No Data Collected



# Abbotsford Water Distribution System

## Recent Water Quality Results

Updated: 7/1/2020



W13	Turbidity	Total Chlorine	Total Coliforms	E. Coli
Units	NTU	ppm	counts	counts
Target	< 1.0	0.2 - 1.2	< 10	0
<b>JUN</b>				
JUN 2	0.13	0.37	0	0
JUN 9	0.11	0.41	0	0
JUN 16	0.07	0.51	0	0
JUN 23	0.13	0.28	0	0
JUN 30	0.13	0.30	0	0
<b>MAY</b>				
MAY 5	0.12	0.50	0	0
MAY 12	0.23	0.58	0	0
MAY 20	0.06	0.50	0	0
MAY 26	0.19	0.36	0	0
<b>APR</b>				
APR 7	0.14	0.97	0	0
APR 15	0.10	0.96	0	0
APR 21	0.17	0.81	0	0
APR 28	0.06	0.73	0	0

Blank Cell = No Data Collected

W14	Turbidity	Total Chlorine	Total Coliforms	E. Coli
Units	NTU	ppm	counts	counts
Target	< 1.0	0.2 - 1.2	< 10	0
<b>JUN</b>				
JUN 2	0.12	1.04	0	0
JUN 9	0.11	0.97	0	0
JUN 16	0.08	0.74	0	0
JUN 23	0.15	0.29	0	0
JUN 30	0.10	1.00	0	0
<b>MAY</b>				
MAY 5	0.09	0.93	0	0
MAY 12	0.13	0.89	0	0
MAY 20	0.06	0.88	0	0
MAY 26	0.14	0.87	0	0
<b>APR</b>				
APR 7	0.10	1.07	0	0
APR 15	0.17	0.94	0	0
APR 21	0.19	0.81	0	0
APR 28	0.07	0.45	0	0

Blank Cell = No Data Collected

W15	Turbidity	Total Chlorine	Total Coliforms	E. Coli
Units	NTU	ppm	counts	counts
Target	< 1.0	0.2 - 1.2	< 10	0
<b>JUN</b>				
JUN 2	0.07	1.38	0	0
JUN 9	0.11	1.25	0	0
JUN 16	0.08	1.20	0	0
JUN 23	0.12	1.23	0	0
JUN 30	0.16	1.31	0	0
<b>MAY</b>				
MAY 5	0.07	1.31	0	0
MAY 12	0.12	1.07	0	0
MAY 20	0.07	1.20	0	0
MAY 26	0.14	1.15	0	0
<b>APR</b>				
APR 7	0.15	1.31	0	0
APR 15	0.07	1.34	0	0
APR 21	0.10	1.20	0	0
APR 28	0.08	1.14	0	0

Blank Cell = No Data Collected



# Abbotsford Water Distribution System

## Recent Water Quality Results

Updated: 7/1/2020



<b>W16</b>	Turbidity	Total Chlorine	Total Coliforms	E. Coli
Units	NTU	ppm	counts	counts
Target	< 1.0	0.2 - 1.2	< 10	0
<b>JUN</b>				
JUN 2	0.15	0.75	0	0
JUN 9	0.10	0.85	0	0
JUN 16	0.20	0.83	0	0
JUN 23	0.16	0.79	0	0
JUN 30	0.10	0.86	0	0
<b>MAY</b>				
MAY 5	0.16	0.87	0	0
MAY 12	0.30	0.85	0	0
MAY 20	0.06	0.90	0	0
MAY 26	0.27	0.70	0	0
<b>APR</b>				
APR 7	0.16	1.00	0	0
APR 15	0.15	0.90	0	0
APR 21	0.45	0.83	0	0
APR 28	0.10	0.77	0	0
Blank Cell = No Data Collected				



# Abbotsford Water Distribution System

## Recent Water Quality Results

Updated: 7/1/2020



Parameter	Description	Acceptable Range
<b>Turbidity</b>	Suspended matter that interferes with the clarity of the water. While not a health concern itself, turbidity is an indicator of possible contamination.	There are no regulations for distribution system turbidity; water system operators aim for less than 1.0 NTU.
<b>Total Chlorine</b>	Used to monitor the level of disinfectant used to inactivate microorganisms such as bacteria and viruses.	There are no regulations for distribution system total chlorine; system operators aim to maintain 0.2 - 1.2 ppm. As long as there are no total coliforms, lower values are not a concern. Higher values are not deemed a health concern unless they exceed the World Health Organization's recommended limit of 5 ppm.
<b>Total Coliforms</b>	A group of bacteria that generally do not cause human disease, but their presence in water may indicate possible contamination.	The BC Drinking Water Act stipulates that no more than 10% of samples during a 30-day period may be positive for Total Coliforms and that no single sample may contain more than 10 counts.
<b>E. Coli</b>	A member of the Total Coliform group and its presence in water indicates contamination.	The BC Drinking Water Act stipulates that no E.Coli should be detected in drinking water.

**Note: Turbidity and Total Chlorine are measured with field instruments. Result trends are used as indicators of significant water quality changes; specific values are not necessarily accurate.**

\* Surface water was diluted by undisinfected well water. Total Coliform and E.Coli counts were non-detect.

\*\*Anomalous result. Resample results below 1 NTU.