

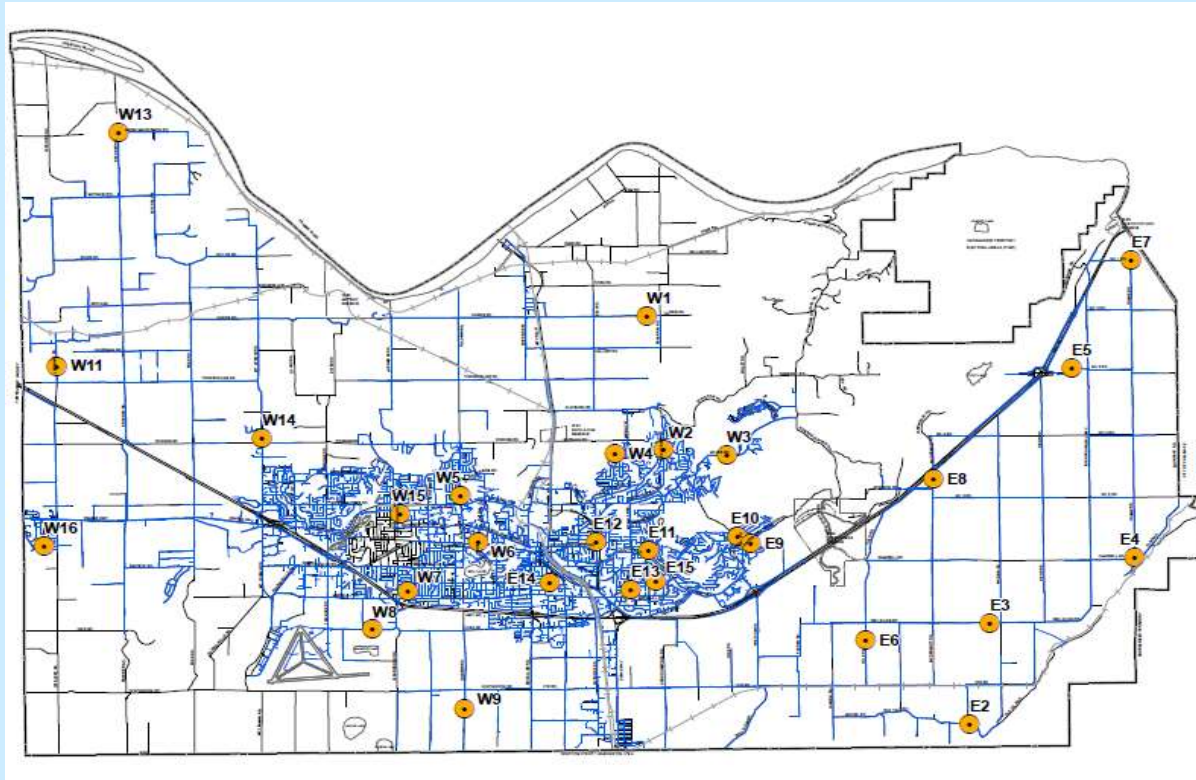
# Abbotsford Water Distribution System

## Recent Water Quality Results

Updated: 9/1/2020



### Sample Locations



- Refer to following pages for results.
- Water quality parameter descriptions on last page.

**APPROVED**

By tbowie at 11:12 am, Nov 26, 2020



**APPROVED**

By risaac at 2:09 pm, Nov 30, 2020



**Questions?**

Engineering  
604-864-5514  
eng-info@abbotsford.ca

# Abbotsford Water Distribution System

## Recent Water Quality Results

Updated: 9/1/2020



E2	Turbidity	Total Chlorine	Total Coliforms	E. Coli
Units	NTU	ppm	counts	counts
Target	< 1.0	0.2 - 2.2	< 10	0
<b>AUG</b>				
AUG 5	0.27	1.24	0	0
AUG 11	0.16	0.66	0	0
AUG 18	0.26	1.13	0	0
AUG 25	0.27	0.98	0	0
AUG 26				
AUG 27				
<b>JUL</b>				
JUL 7	0.22	1.18	0	0
JUL 14	0.30	1.17	0	0
JUL 21	0.09	1.13	0	0
JUL 28	0.06	1.19	0	0
<b>JUN</b>				
JUN 2	0.19	1.17	0	0
JUN 9	0.10	0.93	0	0
JUN 16	0.17	0.94	0	0
JUN 23	0.16	1.13	0	0
JUN 30	0.15	1.17	0	0

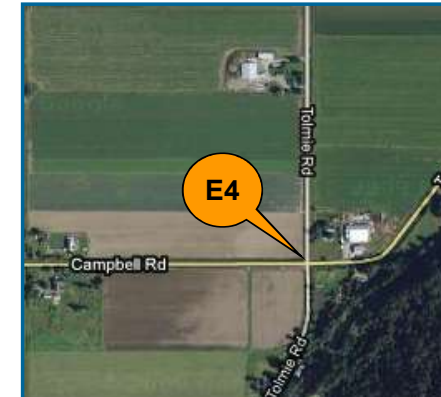
Blank Cell = No Data Collected

E3	Turbidity	Total Chlorine	Total Coliforms	E. Coli
Units	NTU	ppm	counts	counts
Target	< 1.0	0.2 - 2.2	< 10	0
<b>AUG</b>				
AUG 5	0.24	1.21	0	0
AUG 11	0.17	0.74	0	0
AUG 18	0.36	1.07	0	0
AUG 25	0.23	0.68	0	0
AUG 26				
AUG 27				
<b>JUL</b>				
JUL 7	0.23	1.13	0	0
JUL 14	0.21	1.07	0	0
JUL 21	0.09	1.09	0	0
JUL 28	0.11	0.81	0	0
<b>JUN</b>				
JUN 2	0.21	0.73	0	0
JUN 9	0.12	0.80	0	0
JUN 16	0.16	0.73	0	0
JUN 23	0.19	1.00	0	0
JUN 30	0.16	1.06	0	0

Blank Cell = No Data Collected

E4	Turbidity	Total Chlorine	Total Coliforms	E. Coli
Units	NTU	ppm	counts	counts
Target	< 1.0	0.2 - 2.2	< 10	0
<b>AUG</b>				
AUG 5	0.25	1.06	0	0
AUG 11	0.22	0.81	0	0
AUG 18	0.28	0.94	0	0
AUG 25	0.29	0.82	4*	0
AUG 26			2*	0
AUG 27			0	0
<b>JUL</b>				
JUL 7	0.18	0.86	0	0
JUL 14	0.18	0.92	0	0
JUL 21	0.15	0.92	0	0
JUL 28	0.12	0.93	0	0
<b>JUN</b>				
JUN 2	0.14	1.03	0	0
JUN 9	0.11	0.81	0	0
JUN 16	0.17	0.78	0	0
JUN 23	0.13	0.89	0	0
JUN 30	0.10	0.87	0	0

Blank Cell = No Data Collected



# Abbotsford Water Distribution System

## Recent Water Quality Results

Updated: 9/1/2020



<b>E5</b>	Turbidity	Total Chlorine	Total Coliforms	E. Coli
Units	NTU	ppm	counts	counts
Target	< 1.0	0.2 - 2.2	< 10	0
<b>AUG</b>				
AUG 5	0.21	0.53	0	0
AUG 11	0.17	0.36	0	0
AUG 18	0.32	0.51	0	0
AUG 25	0.26	0.26	0	0
<b>JUL</b>				
JUL 7	0.19	0.25	0	0
JUL 14	0.26	0.43	0	0
JUL 21	0.14	0.48	0	0
JUL 28	0.11	0.56	0	0
<b>JUN</b>				
JUN 2	0.20	0.59	0	0
JUN 9	0.12	0.49	0	0
JUN 16	0.12	0.43	0	0
JUN 23	0.13	0.52	0	0
JUN 30	0.12	0.49	0	0

Blank Cell = No Data Collected

<b>E6</b>	Turbidity	Total Chlorine	Total Coliforms	E. Coli
Units	NTU	ppm	counts	counts
Target	< 1.0	0.2 - 2.2	< 10	0
<b>AUG</b>				
AUG 5	0.34	1.19	0	0
AUG 11	0.20	0.80	0	0
AUG 18	0.38	1.06	0	0
AUG 25	0.37	0.90	0	0
<b>JUL</b>				
JUL 7	0.26	1.16	0	0
JUL 14	0.39	1.15	0	0
JUL 21	0.16	1.10	0	0
JUL 28	0.08	1.14	0	0
<b>JUN</b>				
JUN 2	0.26	1.10	0	0
JUN 9	0.15	1.04	0	0
JUN 16	0.15	0.95	0	0
JUN 23	0.19	1.11	0	0
JUN 30	0.16	1.13	0	0

Blank Cell = No Data Collected

<b>E7</b>	Turbidity	Total Chlorine	Total Coliforms	E. Coli
Units	NTU	ppm	counts	counts
Target	< 1.0	0.2 - 2.2	< 10	0
<b>AUG</b>				
AUG 5	0.20	0.10	0	0
AUG 11	0.21	0.40	0	0
AUG 18	0.30	0.20	0	0
AUG 25	0.20	0.06	0	0
<b>JUL</b>				
JUL 7	0.22	0.51	0	0
JUL 14	0.25	0.10**	0	0
JUL 21	0.15	0.51	0	0
JUL 28	0.11	0.38	0	0
<b>JUN</b>				
JUN 2	0.23	0.41	0	0
JUN 9	0.13	0.29	0	0
JUN 16	0.19	0.20	0	0
JUN 23	0.16	0.33	0	0
JUN 30	0.09	0.09	0	0

Blank Cell = No Data Collected



# Abbotsford Water Distribution System

## Recent Water Quality Results

Updated: 9/1/2020



<b>E8</b>	Turbidity	Total Chlorine	Total Coliforms	E. Coli
Units	NTU	ppm	counts	counts
Target	< 1.0	0.2 - 2.2	< 10	0
<b>AUG</b>				
AUG 5	0.45	1.20	0	0
AUG 11	0.20	0.60	0	0
AUG 18	0.40	0.98	0	0
AUG 25	0.38	0.56	0	0
<b>JUL</b>				
JUL 7	0.25	1.20	0	0
JUL 14	0.39	0.95	0	0
JUL 21	0.15	1.08	1***	0
JUL 28	0.13	0.65	0	0
<b>JUN</b>				
JUN 2	0.34	0.57	0	0
JUN 9	0.12	0.65	0	0
JUN 16	0.17	0.59	0	0
JUN 23	0.18	1.01	0	0
JUN 30	0.14	1.07	0	0

Blank Cell = No Data Collected

<b>E9</b>	Turbidity	Total Chlorine	Total Coliforms	E. Coli
Units	NTU	ppm	counts	counts
Target	< 1.0	0.2 - 2.2	< 10	0
<b>AUG</b>				
AUG 5	0.27	1.15	0	0
AUG 11	0.17	1.03	0	0
AUG 18	0.63	1.18	0	0
AUG 25	0.23	0.98	0	0
<b>JUL</b>				
JUL 7	0.18	1.08	0	0
JUL 14	0.25	1.02	0	0
JUL 21	0.10	1.13	0	0
JUL 28	0.11	1.23	0	0
<b>JUN</b>				
JUN 2	0.29	1.03	0	0
JUN 9	0.11	1.08	0	0
JUN 16	0.17	1.05	0	0
JUN 23	0.10	0.99	0	0
JUN 30	0.13	1.10	0	0

Blank Cell = No Data Collected

<b>E10</b>	Turbidity	Total Chlorine	Total Coliforms	E. Coli
Units	NTU	ppm	counts	counts
Target	< 1.0	0.2 - 2.2	< 10	0
<b>AUG</b>				
AUG 5	0.27	1.10	0	0
AUG 11	0.76	1.76	0	0
AUG 18	0.28	1.34	0	0
AUG 25	0.20	1.05	0	0
<b>JUL</b>				
JUL 7	0.25	1.21	0	0
JUL 14	0.16	1.19	0	0
JUL 21	0.12	1.03	0	0
JUL 28	0.14	1.20	0	0
<b>JUN</b>				
JUN 2	0.14	1.14	0	0
JUN 9	0.09	1.15	0	0
JUN 16	0.17	1.06	0	0
JUN 23	0.23	1.17	0	0
JUN 30	0.13	1.24	0	0

Blank Cell = No Data Collected





# Abbotsford Water Distribution System

## Recent Water Quality Results

Updated: 9/1/2020



E11	Turbidity	Total Chlorine	Total Coliforms	E. Coli
Units	NTU	ppm	counts	counts
Target	< 1.0	0.2 - 2.2	< 10	0
AUG				
AUG 5	0.50	1.02	0	0
AUG 11	0.42	1.12	0	0
AUG 18	0.21	1.32	0	0
AUG 25	0.26	1.13	0	0
JUL				
JUL 7	0.27	1.27	0	0
JUL 14	0.19	1.18	0	0
JUL 21	0.12	1.17	0	0
JUL 28	0.13	0.98	0	0
JUN				
JUN 2	0.13	1.21	0	0
JUN 9	0.14	0.96	0	0
JUN 16	0.14	1.10	0	0
JUN 23	0.13	1.14	0	0
JUN 30	0.11	1.25	0	0

Blank Cell = No Data Collected

E12	Turbidity	Total Chlorine	Total Coliforms	E. Coli
Units	NTU	ppm	counts	counts
Target	< 1.0	0.2 - 2.2	< 10	0
AUG				
AUG 5	0.37	1.45	0	0
AUG 11	0.71	2.14	0	0
AUG 18	0.31	1.26	0	0
AUG 25	0.20	1.21	0	0
JUL				
JUL 7	0.19	1.23	0	0
JUL 14	0.23	1.32	0	0
JUL 21	0.09	1.27	0	0
JUL 28	0.08	1.38	0	0
JUN				
JUN 2	0.12	1.21	0	0
JUN 9	0.09	1.08	0	0
JUN 16	0.15	1.30	0	0
JUN 23	0.11	1.08	0	0
JUN 30	0.16	1.18	0	0

Blank Cell = No Data Collected

E13	Turbidity	Total Chlorine	Total Coliforms	E. Coli
Units	NTU	ppm	counts	counts
Target	< 1.0	0.2 - 2.2	< 10	0
AUG				
AUG 5	0.25	1.00	0	0
AUG 11	0.20	0.86	0	0
AUG 18	0.29	1.40	0	0
AUG 25	0.22	1.02	0	0
JUL				
JUL 7	0.25	1.05	0	0
JUL 14	0.17	1.10	0	0
JUL 21	0.13	1.04	0	0
JUL 28	0.20	1.09	0	0
JUN				
JUN 2	0.14	1.10	0	0
JUN 9	0.10	1.05	0	0
JUN 16	0.13	1.03	0	0
JUN 23	0.16	1.04	0	0
JUN 30	0.11	1.15	0	0

Blank Cell = No Data Collected



# Abbotsford Water Distribution System

## Recent Water Quality Results

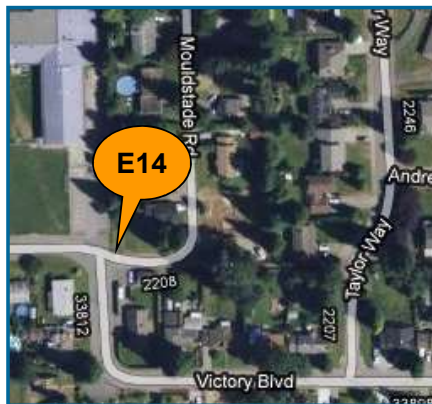
Updated: 9/1/2020



<b>E14</b>	Turbidity	Total Chlorine	Total Coliforms	E. Coli
Units	NTU	ppm	counts	counts
Target	< 1.0	0.2 - 2.2	< 10	0
<b>AUG</b>				
AUG 5	0.22	1.15	0	0
AUG 11	0.10	0.58	0	0
AUG 18	0.16	0.85	0	0
AUG 25	0.20	0.90	0	0
<b>JUL</b>				
JUL 7	0.13	0.68	0	0
JUL 14	0.10	0.82	0	0
JUL 21	0.11	0.89	0	0
JUL 28	0.13	1.09	0	0
<b>JUN</b>				
JUN 2	0.15	0.67	0	0
JUN 9	0.04	0.63	0	0
JUN 16	0.20	0.49	0	0
JUN 23	0.17	0.78	0	0
JUN 30	0.07	0.74	0	0
Blank Cell = No Data Collected				

<b>E15</b>	Turbidity	Total Chlorine	Total Coliforms	E. Coli
Units	NTU	ppm	counts	counts
Target	< 1.0	0.2 - 2.2	< 10	0
<b>AUG</b>				
AUG 5	0.25	0.92	0	0
AUG 11	0.25	1.17	0	0
AUG 18	0.23	1.25	0	0
AUG 25	0.23	1.02	0	0
<b>JUL</b>				
JUL 7	0.26	1.27	0	0
JUL 14	0.15	1.30	0	0
JUL 21	0.09	1.25	0	0
JUL 28	0.16	1.33	0	0
<b>JUN</b>				
JUN 2	0.15	1.22	0	0
JUN 9	0.19	1.13	0	0
JUN 16	0.19	1.10	0	0
JUN 23	0.14	1.02	0	0
JUN 30	0.08	1.26	0	0
Blank Cell = No Data Collected				

<b>W1</b>	Turbidity	Total Chlorine	Total Coliforms	E. Coli
Units	NTU	ppm	counts	counts
Target	< 1.0	0.2 - 2.2	< 10	0
<b>AUG</b>				
AUG 5	0.21	1.01	0	0
AUG 11	0.24	1.01	0	0
AUG 18	0.25	1.13	0	0
AUG 25	0.25	0.96	0	0
<b>JUL</b>				
JUL 7	0.15	1.16	0	0
JUL 14	0.07	1.07	0	0
JUL 21	0.15	1.14	0	0
JUL 28	0.12	1.18	0	0
<b>JUN</b>				
JUN 2	0.08	1.04	0	0
JUN 9	0.07	1.04	0	0
JUN 16	0.09	0.92	0	0
JUN 23	0.10	1.02	0	0
JUN 30	0.11	1.09	0	0
Blank Cell = No Data Collected				



# Abbotsford Water Distribution System

## Recent Water Quality Results

Updated: 9/1/2020



W2	Turbidity	Total Chlorine	Total Coliforms	E. Coli
Units	NTU	ppm	counts	counts
Target	< 1.0	0.2 - 2.2	< 10	0
<b>AUG</b>				
AUG 5	0.19	1.28	0	0
AUG 11	0.48	1.31	0	0
AUG 18	0.25	1.10	0	0
AUG 25	0.18	0.99	0	0
<b>JUL</b>				
JUL 7	0.23	1.11	0	0
JUL 14	0.09	1.12	0	0
JUL 21	0.12	1.12	0	0
JUL 28	0.11	1.13	0	0
<b>JUN</b>				
JUN 2	0.08	1.14	0	0
JUN 9	0.15	1.13	0	0
JUN 16	0.08	1.02	0	0
JUN 23	0.14	1.12	0	0
JUN 30	0.13	1.13	0	0

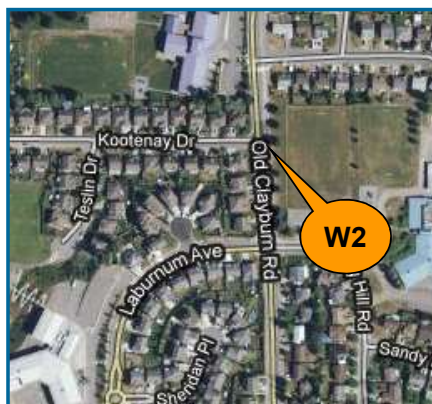
Blank Cell = No Data Collected

W3	Turbidity	Total Chlorine	Total Coliforms	E. Coli
Units	NTU	ppm	counts	counts
Target	< 1.0	0.2 - 2.2	< 10	0
<b>AUG</b>				
AUG 5	0.22	1.33	0	0
AUG 11	0.26	0.82	0	0
AUG 18	0.22	1.25	0	0
AUG 25	0.18	1.16	0	0
<b>JUL</b>				
JUL 7	0.15	0.99	0	0
JUL 14	0.17	0.97	0	0
JUL 21	0.15	1.26	0	0
JUL 28	0.09	1.35	0	0
<b>JUN</b>				
JUN 2	0.09	1.06	0	0
JUN 9	0.13	1.06	0	0
JUN 16	0.08	0.91	0	0
JUN 23	0.18	0.95	0	0
JUN 30	0.13	1.04	0	0

Blank Cell = No Data Collected

W4	Turbidity	Total Chlorine	Total Coliforms	E. Coli
Units	NTU	ppm	counts	counts
Target	< 1.0	0.2 - 2.2	< 10	0
<b>AUG</b>				
AUG 5	0.11	1.02	0	0
AUG 11	0.30	1.28	0	0
AUG 18	0.08	0.74	0	0
AUG 25	0.10	0.73	0	0
<b>JUL</b>				
JUL 7	0.22	0.87	0	0
JUL 14	0.09	0.78	0	0
JUL 21	0.14	0.80	0	0
JUL 28	0.15	1.01	0	0
<b>JUN</b>				
JUN 2	0.08	1.03	0	0
JUN 9	0.08	0.81	0	0
JUN 16	0.11	0.79	0	0
JUN 23	0.26	0.79	0	0
JUN 30	0.08	0.77	0	0

Blank Cell = No Data Collected





# Abbotsford Water Distribution System

## Recent Water Quality Results

Updated: 9/1/2020



W5	Turbidity	Total Chlorine	Total Coliforms	E. Coli
Units	NTU	ppm	counts	counts
Target	< 1.0	0.2 - 2.2	< 10	0
<b>AUG</b>				
AUG 5	0.20	1.33	0	0
AUG 11	0.50	2.29	74*	0
AUG 12	2.18	0.50	0	0
AUG 13			3*	0
AUG 14			1*	0
AUG 15			0	0
AUG 18	0.33	1.52	0	0
AUG 25	0.15	1.20	0	0
<b>JUL</b>				
JUL 7	0.21	1.44	0	0
JUL 14	0.10	1.31	0	0
JUL 21	0.17	1.29	0	0
JUL 28	0.10	1.36	0	0
<b>JUN</b>				
JUN 2	0.06	1.39	0	0
JUN 9	0.16	1.11	0	0
JUN 16	0.12	1.27	0	0
JUN 23	0.11	1.34	0	0
JUN 30	0.12	1.36	0	0

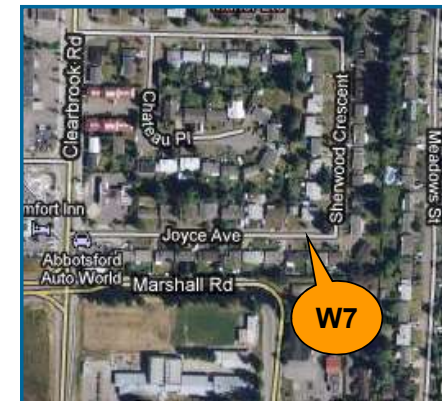
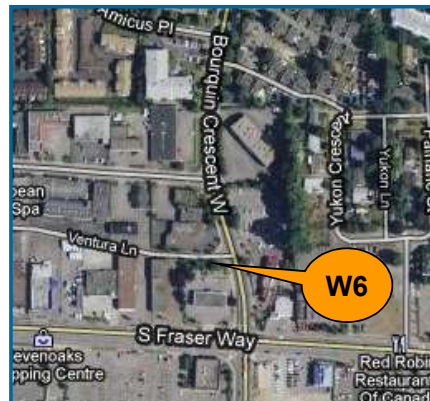
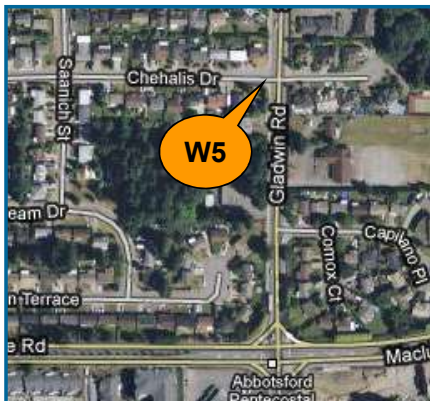
Blank Cell = No Data Collected

W6	Turbidity	Total Chlorine	Total Coliforms	E. Coli
Units	NTU	ppm	counts	counts
Target	< 1.0	0.2 - 2.2	< 10	0
<b>AUG</b>				
AUG 5	0.12	1.07	0	0
AUG 11	0.13	0.77	0	0
AUG 18	0.13	0.89	0	0
AUG 25	0.17	1.12	0	0
<b>JUL</b>				
JUL 7	0.18	1.32	0	0
JUL 14	0.08	1.22	0	0
JUL 21	0.12	1.12	0	0
JUL 28	0.13	1.17	0	0
<b>JUN</b>				
JUN 2	0.07	1.36	0	0
JUN 9	0.11	1.17	0	0
JUN 16	0.14	1.18	0	0
JUN 23	0.19	1.22	0	0
JUN 30	0.13	1.28	0	0

Blank Cell = No Data Collected

W7	Turbidity	Total Chlorine	Total Coliforms	E. Coli
Units	NTU	ppm	counts	counts
Target	< 1.0	0.2 - 2.2	< 10	0
<b>AUG</b>				
AUG 5	0.07	0.93	0	0
AUG 11	0.12	0.77	0	0
AUG 18	0.13	0.78	0	0
AUG 25	0.23	0.71	0	0
<b>JUL</b>				
JUL 7	0.06	0.82	0	0
JUL 14	0.07	0.76	0	0
JUL 21	0.12	0.92	0	0
JUL 28	0.10	0.96	0	0
<b>JUN</b>				
JUN 2	0.05	0.63	0	0
JUN 9	0.06	0.54	0	0
JUN 16	0.05	0.88	0	0
JUN 23	0.10	0.80	0	0
JUN 30	0.11	0.74	0	0

Blank Cell = No Data Collected





# Abbotsford Water Distribution System

## Recent Water Quality Results

Updated: 9/1/2020



W8	Turbidity	Total Chlorine	Total Coliforms	E. Coli
Units	NTU	ppm	counts	counts
Target	< 1.0	0.2 - 2.2	< 10	0
<b>AUG</b>				
AUG 5	0.13	0.71	0	0
AUG 11	0.13	0.58	0	0
AUG 18	0.21	0.49	0	0
AUG 25	0.18	0.44	0	0
<b>JUL</b>				
JUL 7	0.23	0.51	0	0
JUL 14	0.17	0.55	0	0
JUL 21	0.19	0.69	0	0
JUL 28	0.16	0.70	0	0
<b>JUN</b>				
JUN 2	0.10	0.68	0	0
JUN 9	0.13	0.54	0	0
JUN 16	0.16	0.61	0	0
JUN 23	0.09	0.54	0	0
JUN 30	0.12	0.60	0	0

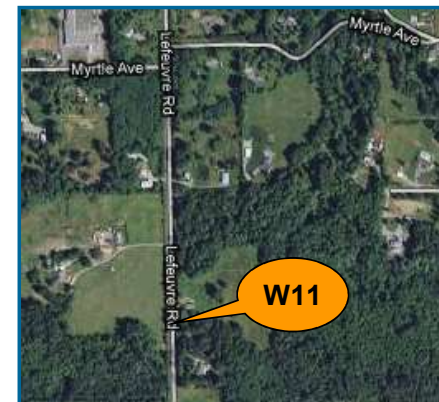
Blank Cell = No Data Collected

W9	Turbidity	Total Chlorine	Total Coliforms	E. Coli
Units	NTU	ppm	counts	counts
Target	< 1.0	0.2 - 2.2	< 10	0
<b>AUG</b>				
AUG 5	0.09	0.88	0	0
AUG 11	0.17	0.72	0	0
AUG 18	0.09	0.64	0	0
AUG 25	0.12	ND****	0	0
<b>JUL</b>				
JUL 7	0.08	0.74	0	0
JUL 14	0.07	0.63	0	0
JUL 21	0.18	0.72	0	0
JUL 28	0.10	0.34	0	0
<b>JUN</b>				
JUN 2	0.11	0.46	0	0
JUN 9	0.64	0.79	0	0
JUN 16	0.16	0.58	0	0
JUN 23	0.13	0.70	0	0
JUN 30	0.11	0.66	0	0

Blank Cell = No Data Collected; ND = Non-Detect

W11	Turbidity	Total Chlorine	Total Coliforms	E. Coli
Units	NTU	ppm	counts	counts
Target	< 1.0	0.2 - 2.2	< 10	0
<b>AUG</b>				
AUG 5	0.19	1.05	0	0
AUG 11	0.23	0.84	0	0
AUG 18	0.27	0.98	0	0
AUG 25	0.20	0.92	0	0
<b>JUL</b>				
JUL 7	0.13	0.76	0	0
JUL 14	0.10	0.83	0	0
JUL 21	0.18	0.92	0	0
JUL 28	0.13	1.03	0	0
<b>JUN</b>				
JUN 2	0.12	0.90	0	0
JUN 9	0.10	0.87	0	0
JUN 16	0.10	0.85	0	0
JUN 23	0.11	0.82	0	0
JUN 30	0.11	0.93	0	0

Blank Cell = No Data Collected



# Abbotsford Water Distribution System

## Recent Water Quality Results

Updated: 9/1/2020



W13	Turbidity	Total Chlorine	Total Coliforms	E. Coli
Units	NTU	ppm	counts	counts
Target	< 1.0	0.2 - 2.2	< 10	0
AUG				
AUG 5	0.16	0.94	0	0
AUG 11	0.23	0.49	0	0
AUG 15				
AUG 18	0.21	0.46	2*	0
AUG 19			0	0
AUG 25	0.23	0.26	0	0
JUL				
JUL 7	0.15	0.69	0	0
JUL 14	0.07	0.77	0	0
JUL 21	0.14	0.27	0	0
JUL 28	0.14	0.81	0	0
JUN				
JUN 2	0.13	0.37	0	0
JUN 9	0.11	0.41	0	0
JUN 16	0.07	0.51	0	0
JUN 23	0.13	0.28	0	0
JUN 30	0.13	0.30	0	0

Blank Cell = No Data Collected

W14	Turbidity	Total Chlorine	Total Coliforms	E. Coli
Units	NTU	ppm	counts	counts
Target	< 1.0	0.2 - 2.2	< 10	0
AUG				
AUG 5	0.15	1.16	0	0
AUG 11	0.20	0.70	0	0
AUG 15				
AUG 18	0.18	1.12	0	0
AUG 19				
AUG 25	0.21	1.02	0	0
JUL				
JUL 7	0.11	0.94	0	0
JUL 14	0.12	0.97	0	0
JUL 21	0.19	0.93	0	0
JUL 28	0.09	1.15	0	0
JUN				
JUN 2	0.12	1.04	0	0
JUN 9	0.11	0.97	0	0
JUN 16	0.08	0.74	0	0
JUN 23	0.15	0.29	0	0
JUN 30	0.10	1.00	0	0

Blank Cell = No Data Collected

W15	Turbidity	Total Chlorine	Total Coliforms	E. Coli
Units	NTU	ppm	counts	counts
Target	< 1.0	0.2 - 2.2	< 10	0
AUG				
AUG 5	0.18	1.13	0	0
AUG 11	0.52	2.26	0	0
AUG 15			9*	0
AUG 18	0.23	1.50	0	0
AUG 19				
AUG 25	0.13	1.00	0	0
JUL				
JUL 7	0.20	1.23	0	0
JUL 14	0.11	1.25	0	0
JUL 21	0.13	1.26	0	0
JUL 28	0.11	1.35	0	0
JUN				
JUN 2	0.07	1.38	0	0
JUN 9	0.11	1.25	0	0
JUN 16	0.08	1.20	0	0
JUN 23	0.12	1.23	0	0
JUN 30	0.16	1.31	0	0

Blank Cell = No Data Collected



# Abbotsford Water Distribution System

## Recent Water Quality Results

Updated: 9/1/2020



<b>W16</b>	Turbidity	Total Chlorine	Total Coliforms	E. Coli
Units	NTU	ppm	counts	counts
Target	< 1.0	0.2 - 2.2	< 10	0
<b>AUG</b>				
AUG 5	0.16	0.90	0	0
AUG 11	0.19	0.74	0	0
AUG 18	0.19	0.74	0	0
AUG 25	0.23	0.71	0	0
<b>JUL</b>				
JUL 7	0.12	0.77	0	0
JUL 14	0.10	0.82	0	0
JUL 21	0.11	0.88	0	0
JUL 28	0.16	0.97	0	0
<b>JUN</b>				
JUN 2	0.15	0.75	0	0
JUN 9	0.10	0.85	0	0
JUN 16	0.20	0.83	0	0
JUN 23	0.16	0.79	0	0
JUN 30	0.10	0.86	0	0

Blank Cell = No Data Collected



# Abbotsford Water Distribution System

## Recent Water Quality Results

Updated: 9/1/2020



Parameter	Description	Acceptable Range
<b>Turbidity</b>	Suspended matter that interferes with the clarity of the water. While not a health concern itself, turbidity is an indicator of possible contamination.	There are no regulations for distribution system turbidity; water system operators aim for less than 1.0 NTU.
<b>Total Chlorine</b>	Used to monitor the level of disinfectant used to inactivate microorganisms such as bacteria and viruses.	There are no regulations for distribution system total chlorine; system operators aim to maintain 0.2 - 2.2 ppm. As long as there are no total coliforms, lower values are not a concern. Higher values are not deemed a health concern unless they exceed the World Health Organization's recommended limit of 5 ppm.
<b>Total Coliforms</b>	A group of bacteria that generally do not cause human disease, but their presence in water may indicate possible contamination.	The BC Drinking Water Act stipulates that no more than 10% of samples during a 30-day period may be positive for Total Coliforms and that no single sample may contain more than 10 counts.
<b>E. Coli</b>	A member of the Total Coliform group and its presence in water indicates contamination.	The BC Drinking Water Act stipulates that no E.Coli should be detected in drinking water.

**Note: Turbidity and Total Chlorine are measured with field instruments. Result trends are used as indicators of significant water quality changes; specific values are not necessarily accurate.**

\* Total Coliforms were detected at E4,W5 and W13 in mid-August. Samples were taken regularly until they were non-detect and no *E. coli* was detected. Staff were in regular communication with Fraser Health and treatment was adjusted to reflect the changes in the raw water quality.

\*\*Far end of the system. Operations flush this area regularly. *E. coli* and Total Coliforms were non-detect.

\*\*\*Total Coliforms were detected at E8 on Jul 21, 2020. A resample was taken on the 22nd and the results were non-detect.

\*\*\*\* Due to an operational malfunction. *E. coli* and Total Coliforms were non-detect.