

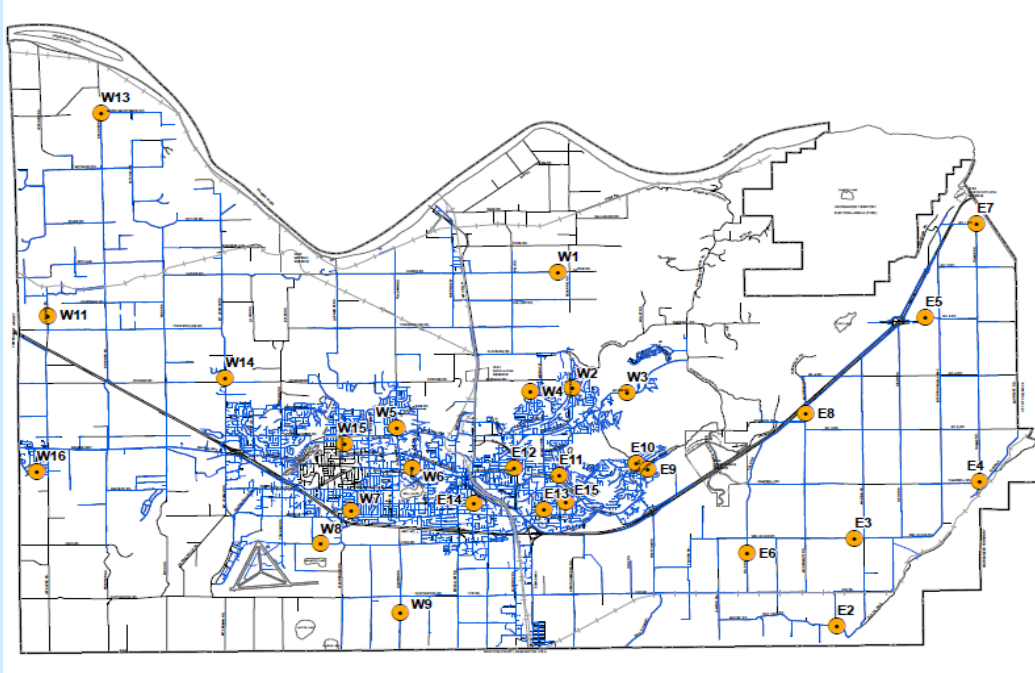
Abbotsford Water Distribution System

Recent Water Quality Results

Updated: 25-Jul-16



Sample Locations



- Refer to following pages for results.
- Water quality parameter descriptions on last page.

Questions?

Engineering
604-864-5514
eng-info@abbotsford.ca

Abbotsford Water Distribution System

Recent Water Quality Results

Updated: 25-Jul-16



E2	Turbidity	Total Chlorine	Total Coliforms	E.Coli
Units	NTU	ppm	counts	counts
Target	< 1.0	0.2 - 1.2	< 10	0
JAN				
JAN 6	0.12	0.48	0	0
JAN 13	0.14	1.00	0	0
JAN 20	0.14	1.00	0	0
JAN 27	0.17	1.05	0	0
FEB				
FEB 3	0.15	0.91	0	0
FEB 10	0.31	1.16	0	0
FEB 17	0.14	1.03	0	0
FEB 24	0.09	0.87	0	0
MAR				
MAR 8	0.14	0.16	0	0
MAR 14	0.07	0.07	0	0
MAR 21	0.17	0.36	0	0
MAR 28	0.18	0.48	0	0
APR				
APR 1	0.18	1.11	0	0
APR 8	0.17	0.99	0	0
APR 15	0.14	0.89	0	0
APR 23	0.12	0.93	0	0
APR 29	0.21	0.96	0	0
MAY				
MAY 5	0.14	0.28	0	0
MAY 12	0.12	0.52	0	0
MAY 20	0.14	0.50	0	0
MAY 26	0.13	0.29	0	0
JUN				
JUN 2	0.11	0.34	0	0
JUN 9	0.07	0.40	0	0
JUN 16	0.14	0.28	0	0
JUN 23	0.10	0.39	0	0
JUN 29	0.12	0.28	0	0
JUL				
JUL 7	0.11	0.34	0	0
JUL 14	0.12	0.23	0	0
JUL 21	0.06	0.52	0	0
JUL 28	0.18	0.48	0	0

E3	Turbidity	Total Chlorine	Total Coliforms	E.Coli
Units	NTU	ppm	counts	counts
Target	< 1.0	0.2 - 1.2	< 10	0
JAN				
JAN 6	0.09	0.56	0	0
JAN 13	0.29	0.88	0	0
JAN 20	0.18	0.86	0	0
JAN 27	0.18	0.83	0	0
FEB				
FEB 3	0.13	0.65	0	0
FEB 10	0.28	0.87	0	0
FEB 17	0.11	1.01	0	0
FEB 24	0.11	0.85	0	0
MAR				
MAR 8	0.11	0.17	0	0
MAR 14	0.07	0.17	0	0
MAR 21	0.18	0.44	0	0
MAR 28	0.16	0.41	0	0
APR				
APR 1	0.15	1.08	0	0
APR 8	0.17	0.99	0	0
APR 15	0.08	0.96	0	0
APR 23	0.08	0.84	0	0
APR 29	0.12	1.04	0	0
MAY				
MAY 5	0.18	0.25	0	0
MAY 12	0.18	0.57	0	0
MAY 20	0.13	0.42	0	0
MAY 26	0.08	0.39	0	0
JUN				
JUN 2	0.10	0.32	0	0
JUN 9	0.10	0.41	0	0
JUN 16	0.18	0.25	0	0
JUN 23	0.12	0.40	0	0
JUN 29	0.14	0.40	0	0
JUL				
JUL 7	0.09	0.29	0	0
JUL 14	0.11	0.28	0	0
JUL 21	0.12	0.39	0	0
JUL 28	0.15	0.69	0	0

E4	Turbidity	Total Chlorine	Total Coliforms	E.Coli
Units	NTU	ppm	counts	counts
Target	< 1.0	0.2 - 1.2	< 10	0
JAN				
JAN 6	0.12	0.29	0	0
JAN 13	0.16	0.84	0	0
JAN 20	0.12	0.77	0	0
JAN 27	0.19	0.66	0	0
FEB				
FEB 3	0.11	0.85	0	0
FEB 10	0.21	0.62	0	0
FEB 17	0.09	0.93	0	0
FEB 24	0.10	0.53	0	0
MAR				
MAR 8	0.19	0.18	0	0
MAR 14	0.10	0.14	0	0
MAR 21	0.17	0.12	0	0
MAR 28	0.15	0.44	0	0
APR				
APR 1	0.19	0.90	0	0
APR 8	0.20	0.67	0	0
APR 15	0.19	0.87	0	0
APR 23	0.18	0.77	0	0
APR 29	0.23	0.65	0	0
MAY				
MAY 5	0.15	0.19	0	0
MAY 12	0.13	0.33	0	0
MAY 20	0.15	0.28	0	0
MAY 26	0.07	0.19	0	0
JUN				
JUN 2	0.08	0.29	0	0
JUN 9	0.07	0.50	0	0
JUN 16	0.13	0.40	0	0
JUN 23	0.08	0.21	0	0
JUN 29	0.12	0.48	0	0
JUL				
JUL 7	0.12	0.37	0	0
JUL 14	0.08	0.35	0	0
JUL 21	0.05	0.47	0	0
JUL 28	0.09	0.32	0	0

Abbotsford Water Distribution System

Recent Water Quality Results

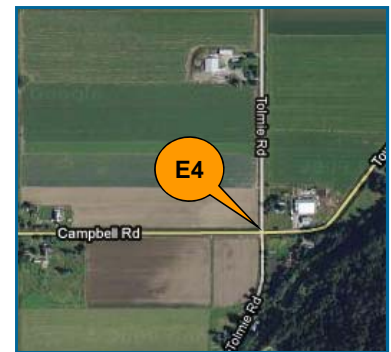
Updated: 25-Jul-16



AUG				
AUG 5	0.12	0.32	0	0
AUG 11	0.09	0.32	0	0
AUG 18	0.17	0.39	0	0
AUG 25	0.11	0.52	0	0
SEP				
SEP 1	0.11	0.37	0	0
SEP 9	0.08	0.51	0	0
SEP 15	0.07	0.51	0	0
SEP 22	0.06	0.37	0	0
SEP 29	0.16	0.68	0	0
OCT				
OCT 6	0.17	0.45	0	0
OCT 14	0.06	0.52	0	0
OCT 20	0.12	0.94	0	0
OCT 27	0.15	0.75	0	0
NOV				
NOV 3	0.12	0.13	0	0
NOV 9	0.10	0.10	0	0
NOV 17	0.13	0.38	0	0
NOV 24	0.11	0.21	0	0
DEC				
DEC 1	0.16	1.30	0	0
DEC 8	0.15	0.32	0	0
DEC 15	0.12	0.90	0	0
DEC 21	0.06	0.01	0	0
DEC 29	0.11	0.14	0	0
Blank Cell = No Data Collected				

AUG				
AUG 5	0.13	0.21	0	0
AUG 11	0.19	0.18	0	0
AUG 18	0.16	0.21	0	0
AUG 25	0.07	0.50	0	0
SEP				
SEP 1	0.06	0.42	0	0
SEP 9	0.10	0.38	0	0
SEP 15	0.10	0.48	0	0
SEP 22	0.11	0.45	0	0
SEP 29	0.09	0.59	0	0
OCT				
OCT 6	0.14	0.17	0	0
OCT 14	0.06	0.31	0	0
OCT 20	0.10	1.05	0	0
OCT 27	0.12	0.76	0	0
NOV				
NOV 3	0.13	0.20	0	0
NOV 9	0.12	0.08	0	0
NOV 17	0.14	0.34	0	0
NOV 24	0.15	0.15	0	0
DEC				
DEC 1	0.12	1.15	0	0
DEC 8	0.11	0.28	0	0
DEC 15	0.14	0.97	0	0
DEC 21	0.07	0.05	0	0
DEC 29	0.10	0.19	0	0
Blank Cell = No Data Collected				

AUG				
AUG 5	0.17	0.26	0	0
AUG 11	0.14	0.19	0	0
AUG 18	0.19	0.18	0	0
AUG 25	0.08	0.30	0	0
SEP				
SEP 1	0.06	0.41	0	0
SEP 9	0.07	0.31	0	0
SEP 15	0.07	0.65	0	0
SEP 22	0.08	0.43	0	0
SEP 29	0.08	0.51	0	0
OCT				
OCT 6	0.15	0.20	0	0
OCT 14	0.06	0.24	0	0
OCT 20	0.12	0.14	0	0
OCT 27	0.15	0.51	0	0
NOV				
NOV 3	0.18	0.17	0	0
NOV 9	0.14	0.18	0	0
NOV 17	0.11	0.23	0	0
NOV 24	0.12	0.16	0	0
DEC				
DEC 1	0.10	0.51	0	0
DEC 8	0.14	0.22	0	0
DEC 15	0.12	0.18	0	0
DEC 21	0.08	0.32	0	0
DEC 29	0.11	0.12	0	0
Blank Cell = No Data Collected				



Abbotsford Water Distribution System

Recent Water Quality Results

Updated: 25-Jul-16



E5	Turbidity	Total Chlorine	Total Coliforms	E.Coli
	Units	NTU	ppm	counts
	Target	< 1.0	0.2 - 1.2	< 10
JAN				
JAN 6	0.16	0.17	0	0
JAN 13	0.13	0.56	0	0
JAN 20	0.15	0.39	0	0
JAN 27	0.16	0.43	0	0
FEB				
FEB 3	0.16	0.52	0	0
FEB 10	0.12	0.28	0	0
FEB 17	0.08	0.61	0	0
FEB 24	0.07	0.46	0	0
MAR				
MAR 8	0.27	0.23	0	0
MAR 14	0.09	0.26	0	0
MAR 21	0.18	0.14	0	0
MAR 28	0.17	0.35	0	0
APR				
APR 1	0.22	0.78	0	0
APR 8	0.19	0.76	0	0
APR 15	0.16	0.72	0	0
APR 23	0.17	0.60	0	0
APR 29	0.18	0.56	0	0
MAY				
MAY 5	0.17	0.18	0	0
MAY 12	0.19	0.18	0	0
MAY 20	0.14	0.46	0	0
MAY 26	0.09	0.21	0	0
JUN				
JUN 2	0.18	0.28	0	0
JUN 9	0.08	0.23	0	0
JUN 16	0.11	0.35	0	0
JUN 23	0.13	0.26	0	0
JUN 29	0.14	0.22	0	0
JUL				
JUL 7	0.08	0.22	0	0
JUL 14	0.07	0.20	0	0
JUL 21	0.06	0.28	0	0
JUL 28	0.09	0.32	0	0

E6	Turbidity	Total Chlorine	Total Coliforms	E.Coli
	Units	NTU	ppm	counts
	Target	< 1.0	0.2 - 1.2	< 10
JAN				
JAN 6	0.11	0.65	0	0
JAN 13	0.25	0.84	0	0
JAN 20	0.12	0.92	0	0
JAN 27	0.15	0.84	0	0
FEB				
FEB 3	0.12	0.86	0	0
FEB 10	0.27	0.94	0	0
FEB 17	0.14	1.02	0	0
FEB 24	0.10	0.93	0	0
MAR				
MAR 8	0.30	0.28	0	0
MAR 14	0.10	0.26	0	0
MAR 21	0.15	0.40	0	0
MAR 28	0.14	0.16	0	0
APR				
APR 1	0.15	0.84	0	0
APR 8	0.15	0.95	0	0
APR 15	0.16	0.93	0	0
APR 23	0.12	0.93	0	0
APR 29	0.16	0.86	0	0
MAY				
MAY 5	0.17	0.24	0	0
MAY 12	0.16	0.37	0	0
MAY 20	0.13	0.32	0	0
MAY 26	0.08	0.45	0	0
JUN				
JUN 2	0.14	0.25	0	0
JUN 9	0.08	0.52	0	0
JUN 16	0.13	0.42	0	0
JUN 23	0.11	0.49	0	0
JUN 29	0.20	0.39	0	0
JUL				
JUL 7	0.14	0.38	0	0
JUL 14	0.09	0.38	0	0
JUL 21	0.09	0.40	0	0
JUL 28	0.18	0.80	0	0

E7	Turbidity	Total Chlorine	Total Coliforms	E.Coli
	Units	NTU	ppm	counts
	Target	< 1.0	0.2 - 1.2	< 10
JAN				
JAN 6	0.09	0.23	0	0
JAN 13	0.17	0.43	0	0
JAN 20	0.17	0.51	0	0
JAN 27	0.16	0.45	0	0
FEB				
FEB 3	0.22	0.41	0	0
FEB 10	0.14	0.37	0	0
FEB 17	0.05	0.42	0	0
FEB 24	0.09	0.39	0	0
MAR				
MAR 8	0.28	0.16	0	0
MAR 14	0.14	0.10	0	0
MAR 21	0.20	0.11	0	0
MAR 28	0.16	0.18	0	0
APR				
APR 1	0.21	0.77	0	0
APR 8	0.19	0.59	0	0
APR 15	0.17	0.73	0	0
APR 23	0.16	0.51	0	0
APR 29	0.20	0.55	0	0
MAY				
MAY 5	0.17	0.48	0	0
MAY 12	0.18	0.26	0	0
MAY 20	0.16	0.28	0	0
MAY 26	0.10	0.40	0	0
JUN				
JUN 2	0.20	0.23	0	0
JUN 9	0.07	0.20	0	0
JUN 16	0.08	0.30	0	0
JUN 23	0.17	0.41	0	0
JUN 29	0.12	0.34	0	0
JUL				
JUL 7	0.13	0.39	0	0
JUL 14	0.08	0.23	0	0
JUL 21	0.07	0.25	0	0
JUL 28	0.15	0.43	0	0

Abbotsford Water Distribution System

Recent Water Quality Results

Updated: 25-Jul-16



AUG				
AUG 5	0.11	0.18	0	0
AUG 11	0.12	0.36	0	0
AUG 18	0.18	0.16	0	0
AUG 25	0.09	0.23	0	0
SEP				
SEP 1	0.07	0.23	0	0
SEP 9	0.08	0.28	0	0
SEP 15	0.07	0.50	0	0
SEP 22	0.10	0.48	0	0
SEP 29	0.10	0.41	0	0
OCT				
OCT 6	0.17	0.16	0	0
OCT 14	0.06	0.10	0	0
OCT 20	0.18	0.08	0	0
OCT 27	0.18	0.18	0	0
NOV				
NOV 3	0.10	0.11	0	0
NOV 9	0.13	0.09	0	0
NOV 17	0.23	0.12	0	0
NOV 24	0.09	0.07	0	0
DEC				
DEC 1	0.14	0.21	0	0
DEC 8	0.09	0.20	0	0
DEC 15	0.10	0.03	0	0
DEC 21	0.20	0.26	0	0
DEC 29	0.09	0.03	0	0

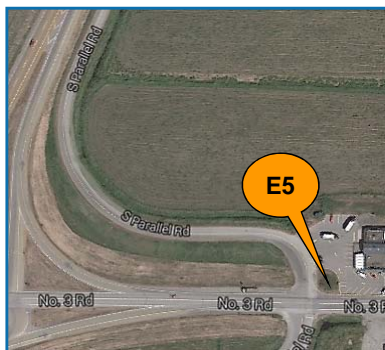
Blank Cell = No Data Collected

AUG				
AUG 5	0.13	0.41	0	0
AUG 11	0.12	0.20	0	0
AUG 18	0.15	0.32	0	0
AUG 25	0.07	0.39	0	0
SEP				
SEP 1	0.08	0.33	0	0
SEP 9	0.09	0.48	0	0
SEP 15	0.09	0.51	0	0
SEP 22	0.07	0.33	0	0
SEP 29	0.13	0.66	0	0
OCT				
OCT 6	0.09	0.70	0	0
OCT 14	0.16	0.21	0	0
OCT 20	0.12	0.92	0	0
OCT 27	0.10	0.76	0	0
NOV				
NOV 3	0.15	0.18	0	0
NOV 9	0.13	0.05	0	0
NOV 17	0.13	0.23	0	0
NOV 24	0.12	0.12	0	0
DEC				
DEC 1	0.18	1.32	0	0
DEC 8	0.12	0.28	0	0
DEC 15	0.16	0.86	0	0
DEC 21	0.06	0.24	0	0
DEC 29	0.14	0.52	0	0

Blank Cell = No Data Collected

AUG				
AUG 5	0.14	0.08	0	0
AUG 11	0.12	0.18	0	0
AUG 18	0.20	0.14	0	0
AUG 25	0.08	0.31	0	0
SEP				
SEP 1	0.09	0.31	0	0
SEP 9	0.09	0.21	0	0
SEP 15	0.07	0.34	0	0
SEP 22	0.08	0.40	0	0
SEP 29	0.15	0.49	0	0
OCT				
OCT 6	0.12	0.19	0	0
OCT 14	0.09	0.11	0	0
OCT 20	0.09	0.13	0	0
OCT 27	0.13	0.36	0	0
NOV				
NOV 3	0.13	0.10	0	0
NOV 9	0.14	0.10	0	0
NOV 17	0.13	0.07	0	0
NOV 24	0.16	0.10	0	0
DEC				
DEC 1	0.13	0.08	0	0
DEC 8	0.12	0.19	0	0
DEC 15	0.09	0.07	0	0
DEC 21	0.13	0.01	0	0
DEC 29	0.15	0.02	0	0

Blank Cell = No Data Collected



Abbotsford Water Distribution System

Recent Water Quality Results

Updated: 25-Jul-16



E8	Turbidity	Total Chlorine	Total Coliforms	E.Coli
	Units	NTU	ppm	counts
	Target	< 1.0	0.2 - 1.2	< 10
JAN				
JAN 6	0.10	0.61	0	0
JAN 13	0.14	0.51	0	0
JAN 20	0.17	0.67	0	0
JAN 27	0.13	0.43	0	0
FEB				
FEB 3	0.12	0.76	0	0
FEB 10	0.21	0.50	0	0
FEB 17	0.13	0.77	0	0
FEB 24	0.08	0.90	0	0
MAR				
MAR 8	0.27	0.21	0	0
MAR 14	0.09	0.22	0	0
MAR 21	0.20	0.16	0	0
MAR 28	0.19	0.47	0	0
APR				
APR 1	0.19	0.76	0	0
APR 8	0.17	1.10	0	0
APR 15	0.15	0.92	0	0
APR 23	0.15	0.87	0	0
APR 29	0.19	0.88	0	0
MAY				
MAY 5	0.15	0.39	0	0
MAY 12	0.16	0.29	0	0
MAY 20	0.18	0.23	0	0
MAY 26	0.08	0.31	0	0
JUN				
JUN 2	0.14	0.40	0	0
JUN 9	0.07	0.25	0	0
JUN 16	0.11	0.28	0	0
JUN 23	0.18	0.24	0	0
JUN 29	0.16	0.24	0	0
JUL				
JUL 7	0.07	0.35	0	0
JUL 14	0.09	0.40	0	0
JUL 21	0.08	0.38	0	0
JUL 28	0.11	0.60	0	0

E9	Turbidity	Total Chlorine	Total Coliforms	E.Coli
	Units	NTU	ppm	counts
	Target	< 1.0	0.2 - 1.2	< 10
JAN				
JAN 6	0.11	0.80	0	0
JAN 13	0.14	1.03	0	0
JAN 20	0.12	1.14	0	0
JAN 27	0.32	0.91	0	0
FEB				
FEB 3	0.11	1.06	0	0
FEB 10	0.18	0.87	0	0
FEB 17	0.11	0.95	0	0
FEB 24	0.15	0.97	0	0
MAR				
MAR 8	0.22	1.15	0	0
MAR 14	0.09	1.11	0	0
MAR 21	0.14	0.70	0	0
MAR 28	0.15	0.77	0	0
APR				
APR 1	0.15	0.92	0	0
APR 8	0.19	0.93	0	0
APR 15	0.18	1.00	0	0
APR 23	0.15	0.84	0	0
APR 29	0.15	0.94	0	0
MAY				
MAY 5	0.11	0.70	0	0
MAY 12	0.12	0.79	0	0
MAY 20	0.14	0.68	0	0
MAY 26	0.11	0.67	0	0
JUN				
JUN 2	0.07	0.87	0	0
JUN 9	0.07	0.74	0	0
JUN 16	0.11	0.65	0	0
JUN 23	0.11	0.85	0	0
JUN 29	0.13	0.64	0	0
JUL				
JUL 7	0.09	0.50	0	0
JUL 14	0.07	0.54	0	0
JUL 21	0.07	0.69	0	0
JUL 28	0.09	0.67	0	0

E10	Turbidity	Total Chlorine	Total Coliforms	E.Coli
	Units	NTU	ppm	counts
	Target	< 1.0	0.2 - 1.2	< 10
JAN				
JAN 6	0.15	0.81	0	0
JAN 13	0.15	1.08	0	0
JAN 20	0.15	1.11	0	0
JAN 27	0.20	0.98	0	0
FEB				
FEB 3	0.13	1.11	0	0
FEB 10	0.28	0.87	0	0
FEB 17	0.09	1.11	0	0
FEB 24	0.08	1.03	0	0
MAR				
MAR 8	0.38	1.08	0	0
MAR 14	0.10	0.97	0	0
MAR 21	0.13	0.84	0	0
MAR 28	0.18	0.99	0	0
APR				
APR 1	0.16	0.95	0	0
APR 8	0.22	1.04	0	0
APR 15	0.16	1.05	0	0
APR 23	0.12	0.94	0	0
APR 29	0.15	1.02	0	0
MAY				
MAY 5	0.14	0.66	0	0
MAY 12	0.11	0.72	0	0
MAY 20	0.20	0.86	0	0
MAY 26	0.09	0.79	0	0
JUN				
JUN 2	0.08	0.71	0	0
JUN 9	0.13	0.81	0	0
JUN 16	0.12	0.85	0	0
JUN 23	0.10	1.03	0	0
JUN 29	0.13	0.72	0	0
JUL				
JUL 7	0.07	0.77	0	0
JUL 14	0.07	0.65	0	0
JUL 21	0.07	0.92	0	0
JUL 28	0.10	0.84	0	0

Abbotsford Water Distribution System

Recent Water Quality Results

Updated: 25-Jul-16



AUG				
AUG 5	0.10	0.20	0	0
AUG 11	0.13	0.24	0	0
AUG 18	0.15	0.29	0	0
AUG 25	0.09	0.40	0	0
SEP				
SEP 1	0.08	0.35	0	0
SEP 9	0.12	0.19	0	0
SEP 15	0.10	0.25	0	0
SEP 22	0.12	0.34	0	0
SEP 29	0.09	0.73	0	0
OCT				
OCT 6	0.10	0.67	0	0
OCT 14	0.09	0.19	0	0
OCT 20	0.16	0.90	0	0
OCT 27	0.12	0.79	0	0
NOV				
NOV 3	0.11	0.15	0	0
NOV 9	0.15	0.14	0	0
NOV 17	0.11	0.18	0	0
NOV 24	0.15	0.12	0	0
DEC				
DEC 1	0.12	0.36	0	0
DEC 8	0.09	0.29	0	0
DEC 15	0.13	0.18	0	0
DEC 21	0.10	0.29	0	0
DEC 29	0.10	0.15	0	0

Blank Cell = No Data Collected

AUG				
AUG 5	0.16	0.66	0	0
AUG 11	0.14	0.51	0	0
AUG 18	0.19	0.63	0	0
AUG 25	0.06	0.56	0	0
SEP				
SEP 1	0.07	0.62	0	0
SEP 9	0.10	0.58	0	0
SEP 15	0.08	0.70	0	0
SEP 22	0.07	0.74	0	0
SEP 29	0.14	0.88	0	0
OCT				
OCT 6	0.11	0.80	0	0
OCT 14	0.19	0.69	0	0
OCT 20	0.10	0.87	0	0
OCT 27	0.12	0.89	0	0
NOV				
NOV 3	0.22	0.69	0	0
NOV 9	0.16	0.79	0	0
NOV 17	0.18	0.56	0	0
NOV 24	0.14	0.77	0	0
DEC				
DEC 1	0.14	1.37	0	0
DEC 8	0.09	0.56	0	0
DEC 15	0.13	0.95	0	0
DEC 21	0.08	1.27	0	0
DEC 29	0.09	1.08	0	0

Blank Cell = No Data Collected

AUG				
AUG 5	0.10	0.63	0	0
AUG 11	0.12	0.71	0	0
AUG 18	0.14	0.69	0	0
AUG 25	0.10	0.78	0	0
SEP				
SEP 1	0.09	0.38	0	0
SEP 9	0.09	0.90	0	0
SEP 15	0.07	0.80	0	0
SEP 22	0.13	0.68	0	0
SEP 29	0.15	0.90	0	0
OCT				
OCT 6	0.10	0.76	0	0
OCT 14	0.22	0.75	0	0
OCT 20	0.09	0.91	0	0
OCT 27	0.11	0.85	0	0
NOV				
NOV 3	0.17	0.63	0	0
NOV 9	0.16	0.91	0	0
NOV 17	0.22	1.32	0	0
NOV 24	0.18	0.78	0	0
DEC				
DEC 1	0.14	1.02	0	0
DEC 8	0.10	0.58	0	0
DEC 15	0.15	1.01	0	0
DEC 21	0.13	1.12	0	0
DEC 29	0.11	1.08	0	0

Blank Cell = No Data Collected



Abbotsford Water Distribution System

Recent Water Quality Results

Updated: 25-Jul-16



E11	Turbidity	Total Chlorine	Total Coliforms	E.Coli
	Units	ppm	counts	counts
	NTU	0.2 - 1.2	< 10	0
Target	< 1.0	0.2 - 1.2	< 10	0
JAN				
JAN 6	0.09	0.78	0	0
JAN 13	0.09	1.07	0	0
JAN 20	0.25	1.04	0	0
JAN 27	0.16	0.86	0	0
FEB				
FEB 3	0.15	0.94	0	0
FEB 10	0.29	1.09	0	0
FEB 17	0.15	1.01	0	0
FEB 24	0.07	0.98	0	0
MAR				
MAR 8	0.16	0.89	0	0
MAR 14	0.16	1.00	0	0
MAR 21	0.13	0.67	0	0
MAR 28	0.13	0.67	0	0
APR				
APR 1	0.16	1.06	0	0
APR 8	0.26	1.01	0	0
APR 15	0.21	1.00	0	0
APR 23	0.27	0.96	0	0
APR 29	0.28	1.00	0	0
MAY				
MAY 5	0.14	0.67	0	0
MAY 12	0.13	0.71	0	0
MAY 20	0.15	0.71	0	0
MAY 26	0.07	0.77	0	0
JUN				
JUN 2	0.08	0.67	0	0
JUN 9	0.06	0.86	0	0
JUN 16	0.14	0.64	0	0
JUN 23	0.10	0.76	0	0
JUN 29	0.14	0.62	0	0
JUL				
JUL 7	0.07	0.58	0	0
JUL 14	0.09	0.58	0	0
JUL 21	0.12	0.63	0	0
JUL 28	0.12	0.69	0	0

E12	Turbidity	Total Chlorine	Total Coliforms	E.Coli
	Units	ppm	counts	counts
	NTU	0.2 - 1.2	< 10	0
Target	< 1.0	0.2 - 1.2	< 10	0
JAN				
JAN 6	0.09	0.75	0	0
JAN 13	0.21	1.23	0	0
JAN 20	0.13	1.16	0	0
JAN 27	0.14	1.25	0	0
FEB				
FEB 3	0.09	1.14	0	0
FEB 10	0.15	1.21	0	0
FEB 17	0.10	1.25	0	0
FEB 24	0.08	0.97	0	0
MAR				
MAR 8	0.14	1.47	0	0
MAR 14	0.10	1.18	0	0
MAR 21	0.14	0.64	0	0
MAR 28	0.11	1.15	0	0
APR				
APR 1	0.29	1.14	0	0
APR 8	0.18	1.07	0	0
APR 15	0.23	0.97	0	0
APR 23	0.63	0.99	0	0
APR 29	0.23	1.09	0	0
MAY				
MAY 5	0.12	1.01	0	0
MAY 12	0.12	0.84	0	0
MAY 20	0.10	1.10	0	0
MAY 26	0.07	0.73	0	0
JUN				
JUN 2	0.07	1.01	0	0
JUN 9	0.08	1.05	0	0
JUN 16	0.11	1.13	0	0
JUN 23	0.10	0.96	0	0
JUN 29	0.12	1.04	0	0
JUL				
JUL 7	0.07	0.99	0	0
JUL 14	0.07	1.05	0	0
JUL 21	0.06	1.05	0	0
JUL 28	0.09	1.16	0	0

E13	Turbidity	Total Chlorine	Total Coliforms	E.Coli
	Units	ppm	counts	counts
	NTU	0.2 - 1.2	< 10	0
Target	< 1.0	0.2 - 1.2	< 10	0
JAN				
JAN 6	0.07	0.80	0	0
JAN 13	0.12	0.91	0	0
JAN 20	0.17	1.10	0	0
JAN 27	0.23	0.81	0	0
FEB				
FEB 3	0.12	1.18	0	0
FEB 10	0.19	1.28	0	0
FEB 17	0.14	1.04	0	0
FEB 24	0.09	1.02	0	0
MAR				
MAR 8	0.24	0.73	0	0
MAR 14	0.18	0.96	0	0
MAR 21	0.12	0.71	0	0
MAR 28	0.12	1.03	0	0
APR				
APR 1	0.18	1.15	0	0
APR 8	0.18	0.97	0	0
APR 15	0.14	0.98	0	0
APR 23	0.20	1.05	0	0
APR 29	0.15	0.90	0	0
MAY				
MAY 5	0.15	0.64	0	0
MAY 12	0.15	0.87	0	0
MAY 20	0.11	1.04	0	0
MAY 26	0.11	1.06	0	0
JUN				
JUN 2	0.12	0.57	0	0
JUN 9	0.06	1.10	0	0
JUN 16	0.10	0.93	0	0
JUN 23	0.10	1.14	0	0
JUN 29	0.18	0.64	0	0
JUL				
JUL 7	0.07	0.77	0	0
JUL 14	0.07	0.33	0	0
JUL 21	0.08	0.63	0	0
JUL 28	0.10	0.88	0	0

Abbotsford Water Distribution System

Recent Water Quality Results

Updated: 25-Jul-16



AUG				
AUG 5	0.14	0.57	0	0
AUG 11	0.09	0.57	0	0
AUG 18	0.16	0.62	0	0
AUG 25	0.11	0.71	0	0
SEP				
SEP 1	0.11	0.48	0	0
SEP 9	0.13	0.58	0	0
SEP 15	0.07	0.74	0	0
SEP 22	0.20	0.79	0	0
SEP 29	0.20	0.79	0	0
OCT				
OCT 6	0.16	0.96	0	0
OCT 14	0.16	0.89	0	0
OCT 20	0.15	0.89	0	0
OCT 27	0.20	0.95	0	0
NOV				
NOV 3	0.18	0.72	0	0
NOV 9	0.14	0.63	0	0
NOV 17	0.15	0.75	0	0
NOV 24	0.16	0.73	0	0
DEC				
DEC 1	0.14	0.96	0	0
DEC 8	0.09	0.69	0	0
DEC 15	0.19	0.95	0	0
DEC 21	0.16	1.05	0	0
DEC 29	0.09	1.20	0	0
Blank Cell = No Data Collected				

AUG				
AUG 5	0.12	0.96	0	0
AUG 11	0.10	0.74	0	0
AUG 18	0.12	0.96	0	0
AUG 25	0.07	1.07	0	0
SEP				
SEP 1	0.07	0.74	0	0
SEP 9	0.07	0.98	0	0
SEP 15	0.08	0.87	0	0
SEP 22	0.09	0.91	0	0
SEP 29	0.18	0.81	0	0
OCT				
OCT 6	0.12	0.89	0	0
OCT 14	0.09	0.95	0	0
OCT 20	0.14	0.99	0	0
OCT 27	0.15	0.92	0	0
NOV				
NOV 3	0.13	0.92	0	0
NOV 9	0.11	0.94	0	0
NOV 17	0.16	0.87	0	0
NOV 24	0.14	0.96	0	0
DEC				
DEC 1	0.07	1.19	0	0
DEC 8	0.17	0.72	0	0
DEC 15	0.16	1.05	0	0
DEC 21	0.06	1.40	0	0
DEC 29	0.10	1.31	0	0
Blank Cell = No Data Collected				

AUG				
AUG 5	0.15	0.92	0	0
AUG 11	0.08	0.46	0	0
AUG 18	0.12	0.89	0	0
AUG 25	0.06	1.02	0	0
SEP				
SEP 1	0.06	0.54	0	0
SEP 9	0.08	0.71	0	0
SEP 15	0.10	1.05	0	0
SEP 22	0.17	0.61	0	0
SEP 29	0.09	0.80	0	0
OCT				
OCT 6	0.10	0.87	0	0
OCT 14	0.12	0.95	0	0
OCT 20	0.16	0.73	0	0
OCT 27	0.10	0.90	0	0
NOV				
NOV 3	0.18	0.87	0	0
NOV 9	0.13	0.88	0	0
NOV 17	0.12	0.63	0	0
NOV 24	0.16	0.64	0	0
DEC				
DEC 1	0.10	1.35	0	0
DEC 8	0.15	0.65	0	0
DEC 15	0.11	1.10	0	0
DEC 21	0.15	1.29	0	0
DEC 29	0.09	1.03	0	0
Blank Cell = No Data Collected				



Abbotsford Water Distribution System

Recent Water Quality Results

Updated: 25-Jul-16



E14	Turbidity	Total Chlorine	Total Coliforms	E. Coli
	Units	NTU	ppm	counts
	Target	< 1.0	0.2 - 1.2	< 10
JAN				
JAN 6	0.12	0.78	0	0
JAN 13	0.12	1.20	0	0
JAN 20	0.16	1.01	0	0
JAN 27	0.14	1.06	0	0
FEB				
FEB 3	0.12	1.23	0	0
FEB 10	0.16	1.19	0	0
FEB 17	0.14	1.15	0	0
FEB 24	0.10	1.06	0	0
MAR				
MAR 8	0.13	1.30	0	0
MAR 14	0.14	0.94	0	0
MAR 21	0.19	0.87	0	0
MAR 28	0.14	1.16	0	0
APR				
APR 1	0.13	1.04	0	0
APR 8	0.17	1.09	0	0
APR 15	0.18	1.08	0	0
APR 23	0.17	0.95	0	0
APR 29	0.21	1.01	0	0
MAY				
MAY 5	0.13	0.90	0	0
MAY 12	0.17	0.85	0	0
MAY 20	0.10	0.85	0	0
MAY 26	0.17	0.74	0	0
JUN				
JUN 2	0.08	0.78	0	0
JUN 9	0.12	0.76	0	0
JUN 16	0.12	0.85	0	0
JUN 23	0.16	0.68	0	0
JUN 29	0.16	0.65	0	0
JUL				
JUL 7	0.17	0.59	0	0
JUL 14	0.09	0.61	0	0
JUL 21	0.09	0.75	0	0
JUL 28	0.08	0.83	0	0

E15	Turbidity	Total Chlorine	Total Coliforms	E. Coli
	Units	NTU	ppm	counts
	Target	< 1.0	0.2 - 1.2	< 10
JAN				
JAN 6	0.09	0.79	0	0
JAN 13	0.12	0.86	0	0
JAN 20	0.13	1.10	0	0
JAN 27	0.12	1.07	0	0
FEB				
FEB 3	0.13	0.97	0	0
FEB 10	0.25	0.75	0	0
FEB 17	0.11	0.95	0	0
FEB 24	0.09	1.03	0	0
MAR				
MAR 8	0.30	0.63	0	0
MAR 14	0.15	0.69	0	0
MAR 21	0.13	0.85	0	0
MAR 28	0.11	0.65	0	0
APR				
APR 1	0.16	1.06	0	0
APR 8	0.22	0.90	0	0
APR 15	0.22	0.70	0	0
APR 23	0.21	0.83	0	0
APR 29	0.22	0.70	0	0
MAY				
MAY 5	0.15	0.73	0	0
MAY 12	0.11	0.73	0	0
MAY 20	0.13	0.72	0	0
MAY 26	0.09	0.68	0	0
JUN				
JUN 2	0.07	0.74	0	0
JUN 9	0.09	1.02	0	0
JUN 16	0.11	0.74	0	0
JUN 23	0.14	0.66	0	0
JUN 29	0.11	0.83	0	0
JUL				
JUL 7	0.10	0.87	0	0
JUL 14	0.09	0.73	0	0
JUL 21	0.07	0.99	0	0
JUL 28	0.09	0.65	0	0

W1	Turbidity	Total Chlorine	Total Coliforms	E. Coli
	Units	NTU	ppm	counts
	Target	< 1.0	0.2 - 1.2	< 10
JAN				
JAN 6	0.13	1.10	0	0
JAN 13	0.10	0.75	0	0
JAN 20	0.43	0.98	0	0
JAN 27	0.12	0.92	0	0
FEB				
FEB 3	0.13	1.05	0	0
FEB 10	0.17	1.19	0	0
FEB 17	0.14	0.98	0	0
FEB 24	0.03	1.03	0	0
MAR				
MAR 8	0.16	1.10	0	0
MAR 14	0.17	0.76	0	0
MAR 21	0.09	0.98	0	0
MAR 28	0.15	0.99	0	0
APR				
APR 1	0.11	0.81	0	0
APR 8	0.12	0.93	0	0
APR 15	0.16	0.81	0	0
APR 23	0.10	0.78	0	0
APR 29	0.13	0.65	0	0
MAY				
MAY 5	0.11	1.01	0	0
MAY 12	0.03	0.89	0	0
MAY 20	0.15	1.05	0	0
MAY 26	0.22	0.86	0	0
JUN				
JUN 2	0.06	0.96	0	0
JUN 9	0.29	0.80	0	0
JUN 16	0.06	0.78	0	0
JUN 23	0.09	0.71	0	0
JUN 29	0.08	0.83	0	0
JUL				
JUL 7	0.10	0.90	0	0
JUL 14	0.08	0.45	0	0
JUL 21	0.07	0.61	0	0
JUL 28	0.10	0.22	0	0

Abbotsford Water Distribution System

Recent Water Quality Results

Updated: 25-Jul-16



AUG				
AUG 5	0.14	0.52	0	0
AUG 11	0.16	0.65	0	0
AUG 18	0.10	0.63	0	0
AUG 25	0.07	0.69	0	0
SEP				
SEP 1	0.11	0.53	0	0
SEP 9	0.08	0.84	0	0
SEP 15	0.07	0.88	0	0
SEP 22	0.09	0.85	0	0
SEP 29	0.10	0.85	0	0
OCT				
OCT 6	0.09	0.85	0	0
OCT 14	0.34	0.84	0	0
OCT 20	0.13	1.20	0	0
OCT 27	0.10	1.10	0	0
NOV				
NOV 3	0.18	0.71	0	0
NOV 9	0.14	0.75	0	0
NOV 17	0.17	0.94	0	0
NOV 24	0.13	0.83	0	0
DEC				
DEC 1	0.13	1.34	0	0
DEC 8	0.09	0.69	0	0
DEC 15	0.11	0.85	0	0
DEC 21	0.07	1.23	0	0
DEC 29	0.09	1.09	0	0

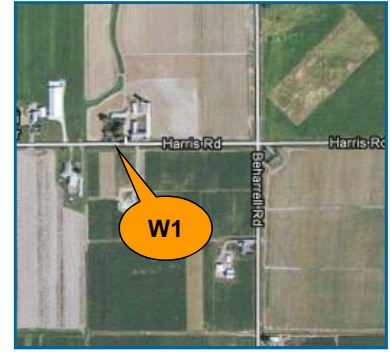
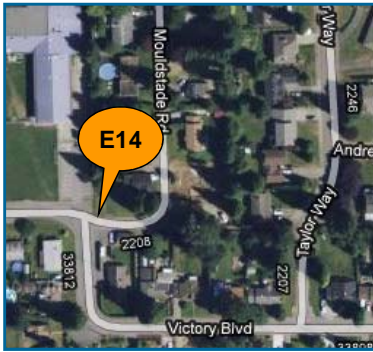
Blank Cell = No Data Collected

AUG				
AUG 5	0.09	0.76	0	0
AUG 11	0.11	0.67	0	0
AUG 18	0.13	0.68	0	0
AUG 25	0.07	0.78	0	0
SEP				
SEP 1	0.07	0.33	0	0
SEP 9	0.08	0.45	0	0
SEP 15	0.08	0.50	0	0
SEP 22	0.13	0.38	0	0
SEP 29	0.08	0.89	0	0
OCT				
OCT 6	0.15	0.51	0	0
OCT 14	0.18	0.66	0	0
OCT 20	0.09	0.81	0	0
OCT 27	0.12	1.02	0	0
NOV				
NOV 3	0.24	0.27	0	0
NOV 9	0.12	0.60	0	0
NOV 17	0.27	0.76	0	0
NOV 24	0.13	0.89	0	0
DEC				
DEC 1	0.13	1.15	0	0
DEC 8	0.10	0.72	0	0
DEC 15	0.17	0.91	0	0
DEC 21	0.09	1.22	0	0
DEC 29	0.09	1.05	0	0

Blank Cell = No Data Collected

AUG				
AUG 5	0.18	0.62	0	0
AUG 11	0.11	0.91	0	0
AUG 18	0.31	0.78	0	0
AUG 25	0.15	0.80	0	0
SEP				
SEP 1	0.07	0.16	0	0
SEP 9	0.15	0.65	0	0
SEP 15	0.12	0.54	0	0
SEP 22	0.38	0.65	0	0
SEP 29	0.18	0.72	0	0
OCT				
OCT 6	0.12	1.01	0	0
OCT 14	0.13	0.85	0	0
OCT 20	0.12	0.71	0	0
OCT 27	0.13	1.29	0	0
NOV				
NOV 3	0.12	0.47	0	0
NOV 9	0.12	0.70	0	0
NOV 17	0.15	1.09	0	0
NOV 24	0.20	1.26	0	0
DEC				
DEC 1	0.13	1.33	0	0
DEC 8	0.29	1.20	0	0
DEC 15	0.15	1.02	0	0
DEC 21	0.16	0.72	0	0
DEC 29	0.18	1.37	0	0

Blank Cell = No Data Collected



Abbotsford Water Distribution System

Recent Water Quality Results

Updated: 25-Jul-16



W2	Turbidity	Total Chlorine	Total Coliforms	E.Coli
	Units	NTU	ppm	counts
	Target	< 1.0	0.2 - 1.2	< 10
JAN				
JAN 6	0.20	1.14	0	0
JAN 13	0.09	0.76	0	0
JAN 20	0.57	0.93	0	0
JAN 27	0.16	1.13	0	0
FEB				
FEB 3	0.11	1.15	0	0
FEB 10	0.14	1.16	0	0
FEB 17	0.10	1.13	0	0
FEB 24	0.14	1.27	0	0
MAR				
MAR 8	0.27	1.09	0	0
MAR 14	0.12	1.10	0	0
MAR 21	0.10	1.17	0	0
MAR 28	0.12	1.16	0	0
APR				
APR 1	0.08	0.96	0	0
APR 8	0.17	1.01	0	0
APR 15	0.09	1.07	0	0
APR 23	0.09	0.90	0	0
APR 29	0.12	0.90	0	0
MAY				
MAY 5	0.02	1.14	0	0
MAY 12	0.10	1.18	0	0
MAY 20	0.14	0.99	0	0
MAY 26	0.02	1.08	0	0
JUN				
JUN 2	0.07	1.01	0	0
JUN 9	0.29	1.08	0	0
JUN 16	0.07	1.18	0	0
JUN 23	0.06	1.21	0	0
JUN 29	0.09	1.12	0	0
JUL				
JUL 7	0.10	0.98	0	0
JUL 14	0.08	0.84	0	0
JUL 21	0.11	0.80	0	0
JUL 28	0.07	1.02	0	0

W3	Turbidity	Total Chlorine	Total Coliforms	E.Coli
	Units	NTU	ppm	counts
	Target	< 1.0	0.2 - 1.2	< 10
JAN				
JAN 6	0.19	1.16	0	0
JAN 13	0.12	0.80	0	0
JAN 20	0.40	1.22	0	0
JAN 27	0.18	1.17	0	0
FEB				
FEB 3	0.12	1.20	0	0
FEB 10	0.20	1.36	0	0
FEB 17	0.09	1.15	0	0
FEB 24	0.07	1.31	0	0
MAR				
MAR 8	0.23	1.43	0	0
MAR 14	0.11	1.07	0	0
MAR 21	0.04	1.11	0	0
MAR 28	0.09	0.88	0	0
APR				
APR 1	0.10	0.87	0	0
APR 8	0.18	1.15	0	0
APR 15	0.08	0.89	0	0
APR 23	0.13	0.86	0	0
APR 29	0.14	0.92	0	0
MAY				
MAY 5	0.09	1.07	0	0
MAY 12	0.06	1.19	0	0
MAY 20	0.18	1.17	0	0
MAY 26	0.11	0.87	0	0
JUN				
JUN 2	0.07	1.14	0	0
JUN 9	0.21	1.09	0	0
JUN 16	0.07	1.16	0	0
JUN 23	0.06	1.18	0	0
JUN 29	0.04	1.05	0	0
JUL				
JUL 7	0.13	1.09	0	0
JUL 14	0.06	0.71	0	0
JUL 21	0.08	0.84	0	0
JUL 28	0.10	1.09	0	0

W4	Turbidity	Total Chlorine	Total Coliforms	E.Coli
	Units	NTU	ppm	counts
	Target	< 1.0	0.2 - 1.2	< 10
JAN				
JAN 6	0.16	1.15	0	0
JAN 13	0.09	0.78	0	0
JAN 20	0.81	0.91	0	0
JAN 27	0.13	1.06	0	0
FEB				
FEB 3	0.14	1.03	0	0
FEB 10	0.12	1.20	0	0
FEB 17	0.14	1.10	0	0
FEB 24	0.19	1.17	0	0
MAR				
MAR 8	0.20	1.15	0	0
MAR 14	0.12	0.99	0	0
MAR 21	0.08	1.09	0	0
MAR 28	0.15	1.11	0	0
APR				
APR 1	0.14	0.82	0	0
APR 8	0.13	1.04	0	0
APR 15	0.08	0.92	0	0
APR 23	0.11	0.81	0	0
APR 29	0.14	0.93	0	0
MAY				
MAY 5	0.09	1.11	0	0
MAY 12	0.05	0.98	0	0
MAY 20	0.18	0.89	0	0
MAY 26	0.10	1.08	0	0
JUN				
JUN 2	0.07	0.99	0	0
JUN 9	0.21	0.65	0	0
JUN 16	0.06	0.65	0	0
JUN 23	0.05	0.65	0	0
JUN 29	0.10	0.29	0	0
JUL				
JUL 7	0.10	0.55	0	0
JUL 14	0.13	0.65	0	0
JUL 21	0.09	0.62	0	0
JUL 28	0.10	0.57	0	0

Abbotsford Water Distribution System

Recent Water Quality Results

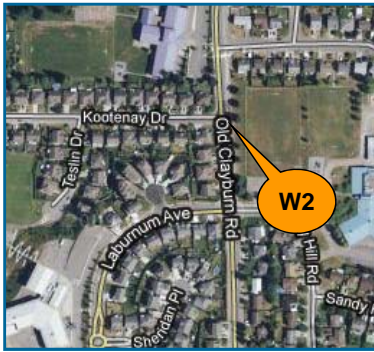
Updated: 25-Jul-16



AUG				
AUG 5	0.20	0.86	0	0
AUG 11	0.12	0.88	0	0
AUG 18	0.25	0.98	0	0
AUG 25	0.15	0.76	0	0
SEP				
SEP 1	0.10	0.45	0	0
SEP 9	0.23	1.10	0	0
SEP 15	0.15	1.07	0	0
SEP 22	0.24	1.02	0	0
SEP 29	0.18	1.01	0	0
OCT				
OCT 6	0.05	1.00	0	0
OCT 14	0.12	0.97	0	0
OCT 20	0.05	1.19	0	0
OCT 27	0.10	1.19	0	0
NOV				
NOV 3	0.16	0.89	0	0
NOV 9	0.10	0.82	0	0
NOV 17	0.27	1.11	0	0
NOV 24	0.11	1.32	0	0
DEC				
DEC 1	0.10	1.41	0	0
DEC 8	0.20	1.12	0	0
DEC 15	0.11	1.12	0	0
DEC 21	0.09	0.70	0	0
DEC 29	0.14	1.30	0	0
Blank Cell = No Data Collected				

AUG				
AUG 5	0.16	0.71	0	0
AUG 11	0.12	1.20	0	0
AUG 18	0.25	1.13	0	0
AUG 25	0.19	1.09	0	0
SEP				
SEP 1	0.09	0.61	0	0
SEP 9	0.14	1.09	0	0
SEP 15	0.16	1.30	0	0
SEP 22	0.43	1.01	0	0
SEP 29	0.16	1.15	0	0
OCT				
OCT 6	0.08	1.16	0	0
OCT 14	0.16	1.11	0	0
OCT 20	0.05	1.20	0	0
OCT 27	0.13	1.30	0	0
NOV				
NOV 3	0.30	1.05	0	0
NOV 9	0.09	0.67	0	0
NOV 17	0.22	1.07	0	0
NOV 24	0.08	1.32	0	0
DEC				
DEC 1	0.10	1.03	0	0
DEC 8	0.25	1.20	0	0
DEC 15	0.18	1.18	0	0
DEC 21	0.10	0.69	0	0
DEC 29	0.10	1.20	0	0
Blank Cell = No Data Collected				

AUG				
AUG 5	0.28	0.51	0	0
AUG 11	0.13	0.62	0	0
AUG 18	0.20	0.75	0	0
AUG 25	0.19	0.68	0	0
SEP				
SEP 1	0.22	0.49	0	0
SEP 9	0.14	0.98	0	0
SEP 15	0.09	0.87	0	0
SEP 22	0.26	0.67	0	0
SEP 29	0.11	0.87	0	0
OCT				
OCT 6	0.07	1.07	0	0
OCT 14	0.12	0.92	0	0
OCT 20	0.09	1.00	0	0
OCT 27	0.14	1.21	0	0
NOV				
NOV 3	0.18	0.73	0	0
NOV 9	0.19	0.80	0	0
NOV 17	0.18	0.90	0	0
NOV 24	0.12	1.09	0	0
DEC				
DEC 1	0.10	1.44	0	0
DEC 8	0.18	0.69	0	0
DEC 15	0.11	1.01	0	0
DEC 21	0.18	0.71	0	0
DEC 29	0.15	1.09	0	0
Blank Cell = No Data Collected				



Abbotsford Water Distribution System

Recent Water Quality Results

Updated: 25-Jul-16



W5	Turbidity	Total Chlorine	Total Coliforms	E.Coli
	Units	NTU	ppm	counts
	Target	< 1.0	0.2 - 1.2	< 10
JAN				
JAN 6	0.16	1.24	0	0
JAN 13	0.07	0.84	0	0
JAN 20	0.43	1.28	0	0
JAN 27	0.08	1.26	0	0
FEB				
FEB 3	0.12	1.21	0	0
FEB 10	0.17	1.40	0	0
FEB 17	0.10	1.23	0	0
FEB 24	0.09	1.34	0	0
MAR				
MAR 8	0.22	1.31	0	0
MAR 14	0.17	1.25	0	0
MAR 21	0.05	1.17	0	0
MAR 28	0.08	1.38	0	0
APR				
APR 1	0.16	1.02	0	0
APR 8	0.10	1.08	0	0
APR 15	0.09	1.05	0	0
APR 23	0.10	1.03	0	0
APR 29	0.15	1.04	0	0
MAY				
MAY 5	0.08	1.38	0	0
MAY 12	0.09	1.13	0	0
MAY 20	0.21	1.20	0	0
MAY 26	0.09	1.27	0	0
JUN				
JUN 2	0.08	1.28	0	0
JUN 9	0.22	1.12	0	0
JUN 16	0.08	1.21	0	0
JUN 23	0.08	0.96	0	0
JUN 29	0.07	1.04	0	0
JUL				
JUL 7	0.07	0.91	0	0
JUL 14	0.09	0.85	0	0
JUL 21	0.10	0.91	0	0
JUL 28	0.16	0.83	0	0

W6	Turbidity	Total Chlorine	Total Coliforms	E.Coli
	Units	NTU	ppm	counts
	Target	< 1.0	0.2 - 1.2	< 10
JAN				
JAN 6	0.13	1.21	0	0
JAN 13	0.10	0.86	0	0
JAN 20	0.23	1.18	0	0
JAN 27	0.14	1.25	0	0
FEB				
FEB 3	0.12	1.22	0	0
FEB 10	0.11	1.35	0	0
FEB 17	0.08	1.25	0	0
FEB 24	0.12	1.26	0	0
MAR				
MAR 8	0.10	1.42	0	0
MAR 14	0.13	1.11	0	0
MAR 21	0.18	1.21	0	0
MAR 28	0.12	1.27	0	0
APR				
APR 1	0.11	1.05	0	0
APR 8	0.11	1.12	0	0
APR 15	0.10	1.02	0	0
APR 23	0.09	1.05	0	0
APR 29	0.10	1.06	0	0
MAY				
MAY 5	0.07	1.33	0	0
MAY 12	0.03	1.23	0	0
MAY 20	0.23	1.06	0	0
MAY 26	0.09	1.19	0	0
JUN				
JUN 2	0.09	1.05	0	0
JUN 9	0.34	0.88	0	0
JUN 16	0.08	0.96	0	0
JUN 23	0.08	0.74	0	0
JUN 29	0.08	0.95	0	0
JUL				
JUL 7	0.09	0.66	0	0
JUL 14	0.07	0.66	0	0
JUL 21	0.08	0.85	0	0
JUL 28	0.10	0.55	0	0

W7	Turbidity	Total Chlorine	Total Coliforms	E.Coli
	Units	NTU	ppm	counts
	Target	< 1.0	0.2 - 1.2	< 10
JAN				
JAN 6	0.12	1.09	0	0
JAN 13	0.09	0.79	0	0
JAN 20	0.21	0.40	0	0
JAN 27	0.17	0.89	0	0
FEB				
FEB 3	0.12	0.97	0	0
FEB 10	0.13	0.83	0	0
FEB 17	0.11	0.93	0	0
FEB 24	0.13	0.92	0	0
MAR				
MAR 8	0.26	0.67	0	0
MAR 14	0.12	0.49	0	0
MAR 21	0.18	0.59	0	0
MAR 28	0.09	0.59	0	0
APR				
APR 1	0.12	0.96	0	0
APR 8	0.17	0.95	0	0
APR 15	0.14	1.04	0	0
APR 23	0.12	0.89	0	0
APR 29	0.09	0.98	0	0
MAY				
MAY 5	0.16	0.42	0	0
MAY 12	0.15	0.43	0	0
MAY 20	0.14	0.43	0	0
MAY 26	0.18	0.46	0	0
JUN				
JUN 2	0.07	0.55	0	0
JUN 9	0.35	0.50	0	0
JUN 16	0.15	0.56	0	0
JUN 23	0.13	0.53	0	0
JUN 29	0.09	0.53	0	0
JUL				
JUL 7	0.15	0.54	0	0
JUL 14	0.09	0.47	0	0
JUL 21	0.16	0.53	0	0
JUL 28	0.12	0.36	0	0

Abbotsford Water Distribution System

Recent Water Quality Results

Updated: 25-Jul-16



AUG				
AUG 5	0.28	0.76	0	0
AUG 11	0.12	0.95	0	0
AUG 18	0.19	1.21	0	0
AUG 25	0.13	1.11	0	0
SEP				
SEP 1	0.08	1.19	0	0
SEP 9	0.15	1.24	0	0
SEP 15	0.09	1.30	0	0
SEP 22	0.18	1.03	0	0
SEP 29	0.10	1.20	0	0
OCT				
OCT 6	0.07	1.23	0	0
OCT 14	0.09	1.13	0	0
OCT 20	0.09	1.18	0	0
OCT 27	0.10	1.30	0	0
NOV				
NOV 3	0.25	0.89	0	0
NOV 9	0.16	0.95	0	0
NOV 17	0.22	1.06	0	0
NOV 24	0.09	1.20	0	0
DEC				
DEC 1	0.09	1.44	0	0
DEC 8	0.24	0.92	0	0
DEC 15	0.25	1.14	0	0
DEC 21	0.10	0.98	0	0
DEC 29	0.09	1.26	0	0
Blank Cell = No Data Collected				

AUG				
AUG 5	0.18	0.67	0	0
AUG 11	0.08	0.93	0	0
AUG 18	0.19	1.14	0	0
AUG 25	0.20	1.16	0	0
SEP				
SEP 1	0.42	1.04	0	0
SEP 9	0.10	1.18	0	0
SEP 15	0.11	1.20	0	0
SEP 22	0.17	0.78	0	0
SEP 29	0.19	1.13	0	0
OCT				
OCT 6	0.09	1.19	0	0
OCT 14	0.13	1.13	0	0
OCT 20	0.07	1.21	0	0
OCT 27	0.10	1.30	0	0
NOV				
NOV 3	0.25	0.95	0	0
NOV 9	0.18	1.01	0	0
NOV 17	0.20	0.90	0	0
NOV 24	0.08	1.28	0	0
DEC				
DEC 1	0.08	1.44	0	0
DEC 8	0.30	0.49	0	0
DEC 15	0.12	1.15	0	0
DEC 21	0.09	1.01	0	0
DEC 29	0.09	1.08	0	0
Blank Cell = No Data Collected				

AUG				
AUG 5	0.25	0.53	0	0
AUG 11	0.14	0.49	0	0
AUG 18	0.27	0.37	0	0
AUG 25	0.16	0.45	0	0
SEP				
SEP 1	0.07	0.48	0	0
SEP 9	0.16	0.52	0	0
SEP 15	0.11	0.57	0	0
SEP 22	0.10	0.29	0	0
SEP 29	0.12	0.47	0	0
OCT				
OCT 6	0.07	0.77	0	0
OCT 14	0.20	0.37	0	0
OCT 20	0.08	0.77	0	0
OCT 27	0.11	1.07	0	0
NOV				
NOV 3	0.13	0.38	0	0
NOV 9	0.10	0.38	0	0
NOV 17	0.12	0.48	0	0
NOV 24	0.11	0.78	0	0
DEC				
DEC 1	0.08	1.27	0	0
DEC 8	0.17	0.40	0	0
DEC 15	0.13	0.92	0	0
DEC 21	0.10	0.78	0	0
DEC 29	0.12	1.10	0	0
Blank Cell = No Data Collected				



Abbotsford Water Distribution System

Recent Water Quality Results

Updated: 25-Jul-16



W8	Turbidity	Total Chlorine	Total Coliforms	E. Coli
	Units	NTU	ppm	counts
	Target	< 1.0	0.2 - 1.2	< 10
JAN				
JAN 6	0.14	0.75	0	0
JAN 13	0.10	0.57	0	0
JAN 20	0.61	0.46	0	0
JAN 27	0.17	0.55	0	0
FEB				
FEB 3	0.17	0.74	0	0
FEB 10	0.15	0.55	0	0
FEB 17	0.10	0.96	0	0
FEB 24	0.13	0.83	0	0
MAR				
MAR 8	0.34	0.34	0	0
MAR 14	0.21	0.36	0	0
MAR 21	0.15	0.41	0	0
MAR 28	0.14	0.36	0	0
APR				
APR 1	0.15	1.02	0	0
APR 8	0.07	0.84	0	0
APR 15	0.17	1.03	0	0
APR 23	0.16	1.04	0	0
APR 29	0.13	1.01	0	0
MAY				
MAY 5	0.14	0.37	0	0
MAY 12	0.11	0.38	0	0
MAY 20	0.19	0.34	0	0
MAY 26	0.14	0.34	0	0
JUN				
JUN 2	0.13	0.33	0	0
JUN 9	0.37	0.35	0	0
JUN 16	0.09	0.42	0	0
JUN 23	0.10	0.57	0	0
JUN 29	0.24	0.26	0	0
JUL				
JUL 7	0.17	0.36	0	0
JUL 14	0.41	0.26	0	0
JUL 21	0.19	0.12	0	0
JUL 28	0.21	0.14	0	0

W9	Turbidity	Total Chlorine	Total Coliforms	E. Coli
	Units	NTU	ppm	counts
	Target	< 1.0	0.2 - 1.2	< 10
JAN				
JAN 6	0.15	1.09	0	0
JAN 13	0.10	0.74	0	0
JAN 20	0.19	0.37	0	0
JAN 27	0.15	0.65	0	0
FEB				
FEB 3	0.14	0.96	0	0
FEB 10	0.13	0.74	0	0
FEB 17	0.14	0.93	0	0
FEB 24	0.11	0.87	0	0
MAR				
MAR 8	0.29	0.30	0	0
MAR 14	0.11	0.39	0	0
MAR 21	0.07	0.42	0	0
MAR 28	0.12	0.52	0	0
APR				
APR 1	0.13	0.86	0	0
APR 8	0.14	0.98	0	0
APR 15	0.10	0.88	0	0
APR 23	0.16	0.78	0	0
APR 29	0.14	0.82	0	0
MAY				
MAY 5	0.13	0.39	0	0
MAY 12	0.08	0.52	0	0
MAY 20	0.15	0.34	0	0
MAY 26	0.19	0.36	0	0
JUN				
JUN 2	0.08	0.46	0	0
JUN 9	0.36	0.43	0	0
JUN 16	0.06	0.30	0	0
JUN 23	0.14	0.42	0	0
JUN 29	0.11	0.28	0	0
JUL				
JUL 7	0.14	0.36	0	0
JUL 14	0.12	0.40	0	0
JUL 21	0.16	0.23	0	0
JUL 28	0.20	0.26	0	0

W11	Turbidity	Total Chlorine	Total Coliforms	E. Coli
	Units	NTU	ppm	counts
	Target	< 1.0	0.2 - 1.2	< 10
JAN				
JAN 6	0.12	1.14	0	0
JAN 13	0.12	0.26	0	0
JAN 20	0.26	0.72	0	0
JAN 27	0.17	0.95	0	0
FEB				
FEB 3	0.18	0.97	0	0
FEB 10	0.17	0.98	0	0
FEB 17	0.12	0.46	0	0
FEB 24	0.15	0.92	0	0
MAR				
MAR 8	0.15	0.92	0	0
MAR 14	0.28	0.88	0	0
MAR 21	0.09	0.98	0	0
MAR 28	0.17	0.96	0	0
APR				
APR 1	0.11	0.80	0	0
APR 8	0.09	0.99	0	0
APR 15	0.09	0.82	0	0
APR 23	0.09	0.77	0	0
APR 29	0.10	0.64	0	0
MAY				
MAY 5	0.17	0.80	0	0
MAY 12	0.17	0.95	0	0
MAY 20	0.37	0.79	0	0
MAY 26	0.12	0.74	0	0
JUN				
JUN 2	0.15	0.65	0	0
JUN 9	0.28	0.80	0	0
JUN 16	0.08	0.89	0	0
JUN 23	0.09	0.77	0	0
JUN 29	0.13	0.78	0	0
JUL				
JUL 7	0.09	0.66	0	0
JUL 14	0.15	0.12	0	0
JUL 21	0.14	0.72	0	0
JUL 28	0.10	0.55	0	0

Abbotsford Water Distribution System

Recent Water Quality Results

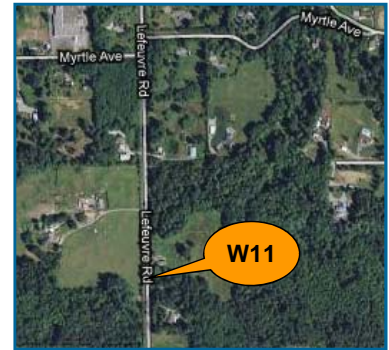
Updated: 25-Jul-16



AUG				
AUG 5	0.33	0.15	0	0
AUG 11	2.28	0.21	0	0
AUG 18	0.28	0.17	0	0
AUG 25	0.99	0.13	0	0
SEP				
SEP 1	0.40	0.14	0	0
SEP 9	0.78	0.04	0	0
SEP 15	0.32	0.05	0	0
SEP 22	0.66	0.13	0	0
SEP 29	0.42	0.18	0	0
OCT				
OCT 6	1.14	0.22	0	0
OCT 14	0.09	0.15	0	0
OCT 20	0.52	0.64	0	0
OCT 27	0.30	0.92	0	0
NOV				
NOV 3	0.22	0.16	0	0
NOV 9	0.30	0.10	0	0
NOV 17	0.19	0.13	0	0
NOV 24	0.24	0.46	0	0
DEC				
DEC 1	0.23	0.92	0	0
DEC 8	0.28	0.15	0	0
DEC 15	0.21	0.86	0	0
DEC 21	0.20	0.71	0	0
DEC 29	0.11	1.05	0	0
Blank Cell = No Data Collected				

AUG				
AUG 5	0.16	0.13	0	0
AUG 11	0.14	0.12	0	0
AUG 18	0.19	0.22	0	0
AUG 25	0.13	0.20	0	0
SEP				
SEP 1	0.18	0.18	0	0
SEP 9	0.17	0.21	0	0
SEP 15	0.16	0.18	0	0
SEP 22	0.16	0.26	0	0
SEP 29	0.15	0.31	0	0
OCT				
OCT 6	0.09	0.02	0	0
OCT 14	0.10	0.21	0	0
OCT 20	0.08	0.73	0	0
OCT 27	0.13	0.85	0	0
NOV				
NOV 3	0.09	0.41	0	0
NOV 9	0.07	0.41	0	0
NOV 17	0.15	0.47	0	0
NOV 24	0.08	0.48	0	0
DEC				
DEC 1	0.09	0.92	0	0
DEC 8	0.29	0.10	0	0
DEC 15	0.14	0.78	0	0
DEC 21	0.12	0.63	0	0
DEC 29	0.17	1.01	0	0
Blank Cell = No Data Collected				

AUG				
AUG 5	0.20	0.37	0	0
AUG 11	0.14	0.50	0	0
AUG 18	0.40	0.64	0	0
AUG 25	0.14	0.55	0	0
SEP				
SEP 1	0.18	0.62	0	0
SEP 9	0.16	0.42	0	0
SEP 15	0.22	0.32	0	0
SEP 22	0.19	0.26	0	0
SEP 29	0.27	0.53	0	0
OCT				
OCT 6	0.27	0.48	0	0
OCT 14	0.14	0.66	0	0
OCT 20	0.12	0.90	0	0
OCT 27	0.13	1.02	0	0
NOV				
NOV 3	0.24	0.65	0	0
NOV 9	0.14	0.60	0	0
NOV 17	0.19	0.52	0	0
NOV 24	0.09	0.98	0	0
DEC				
DEC 1	0.12	0.96	0	0
DEC 8	0.27	1.10	0	0
DEC 15	0.15	0.74	0	0
DEC 21	0.13	0.25	0	0
DEC 29	0.15	0.27	0	0
Blank Cell = No Data Collected				



Abbotsford Water Distribution System

Recent Water Quality Results

Updated: 25-Jul-16



W13	Turbidity	Total Chlorine	Total Coliforms	E.Coli
	Units	NTU	ppm	counts
	Target	< 1.0	0.2 - 1.2	< 10
JAN				
JAN 6	0.25	0.52	0	0
JAN 13	0.11	0.19	0	0
JAN 20	0.20	0.57	0	0
JAN 27	0.14	0.51	0	0
FEB				
FEB 3	0.15	0.49	0	0
FEB 10	0.20	0.70	0	0
FEB 17	0.11	0.41	0	0
FEB 24	0.20	0.87	0	0
MAR				
MAR 8	0.11	0.99	0	0
MAR 14	0.19	0.44	0	0
MAR 21	0.09	0.57	0	0
MAR 28	0.12	0.96	0	0
APR				
APR 1	0.15	0.78	0	0
APR 8	0.19	0.52	0	0
APR 15	0.14	0.79	0	0
APR 23	0.10	0.79	0	0
APR 29	0.15	0.59	0	0
MAY				
MAY 5	0.17	0.59	0	0
MAY 12	0.13	0.80	0	0
MAY 20	0.19	0.70	0	0
MAY 26	0.15	0.40	0	0
JUN				
JUN 2	0.13	0.42	0	0
JUN 9	0.32	0.51	0	0
JUN 16	0.09	0.41	0	0
JUN 23	0.09	0.36	0	0
JUN 29	0.08	0.47	0	0
JUL				
JUL 7	0.13	0.26	0	0
JUL 14	0.12	0.22	0	0
JUL 21	0.11	0.29	0	0
JUL 28	0.13	0.37	0	0

W14	Turbidity	Total Chlorine	Total Coliforms	E.Coli
	Units	NTU	ppm	counts
	Target	< 1.0	0.2 - 1.2	< 10
JAN				
JAN 6	0.14	0.52	0	0
JAN 13	0.09	0.28	0	0
JAN 20	0.30	0.58	0	0
JAN 27	0.16	0.49	0	0
FEB				
FEB 3	0.18	0.56	0	0
FEB 10	0.14	0.50	0	0
FEB 17	0.12	0.89	0	0
FEB 24	0.13	0.47	0	0
MAR				
MAR 8	0.25	0.46	0	0
MAR 14	0.13	0.48	0	0
MAR 21	0.10	0.51	0	0
MAR 28	0.10	0.38	0	0
APR				
APR 1	0.09	0.85	0	0
APR 8	0.11	0.53	0	0
APR 15	0.14	0.97	0	0
APR 23	0.12	0.98	0	0
APR 29	0.12	0.73	0	0
MAY				
MAY 5	0.10	0.46	0	0
MAY 12	0.11	0.42	0	0
MAY 20	0.18	0.28	0	0
MAY 26	0.08	0.33	0	0
JUN				
JUN 2	0.08	0.87	0	0
JUN 9	0.39	0.42	0	0
JUN 16	0.09	0.80	0	0
JUN 23	0.10	0.93	0	0
JUN 29	0.08	0.94	0	0
JUL				
JUL 7	0.08	0.85	0	0
JUL 14	0.10	0.73	0	0
JUL 21	0.09	0.81	0	0
JUL 28	0.13	0.12	0	0

W15	Turbidity	Total Chlorine	Total Coliforms	E.Coli
	Units	NTU	ppm	counts
	Target	< 1.0	0.2 - 1.2	< 10
JAN				
JAN 6	0.17	1.28	0	0
JAN 13	0.14	0.81	0	0
JAN 20	0.24	1.02	0	0
JAN 27	0.12	1.13	0	0
FEB				
FEB 3	0.12	1.21	0	0
FEB 10	0.11	1.26	0	0
FEB 17	0.10	1.07	0	0
FEB 24	0.14	1.18	0	0
MAR				
MAR 8	0.18	1.00	0	0
MAR 14	0.14	1.13	0	0
MAR 21	0.17	1.17	0	0
MAR 28	0.17	1.23	0	0
APR				
APR 1	0.10	1.03	0	0
APR 8	0.09	1.18	0	0
APR 15	0.09	0.96	0	0
APR 23	0.10	1.05	0	0
APR 29	0.11	0.99	0	0
MAY				
MAY 5	0.10	1.25	0	0
MAY 12	0.10	1.05	0	0
MAY 20	0.13	1.11	0	0
MAY 26	0.11	0.98	0	0
JUN				
JUN 2	0.07	1.15	0	0
JUN 9	0.34	1.00	0	0
JUN 16	0.07	1.15	0	0
JUN 23	0.10	1.04	0	0
JUN 29	0.07	1.08	0	0
JUL				
JUL 7	0.10	0.97	0	0
JUL 14	0.09	0.92	0	0
JUL 21	0.13	0.90	0	0
JUL 28	0.07	0.93	0	0

Abbotsford Water Distribution System

Recent Water Quality Results

Updated: 25-Jul-16



AUG				
AUG 5	0.16	0.23	0	0
AUG 11	0.13	0.30	0	0
AUG 18	0.34	0.28	0	0
AUG 25	0.18	0.33	0	0
SEP				
SEP 1	0.15	0.15	0	0
SEP 9	0.24	0.16	0	0
SEP 15	0.15	0.68	0	0
SEP 22	0.18	0.30	0	0
SEP 29	0.36	0.57	0	0
OCT				
OCT 6	0.15	0.34	0	0
OCT 14	0.15	0.08	0	0
OCT 20	0.10	0.32	0	0
OCT 27	0.15	0.43	0	0
NOV				
NOV 3	0.13	0.16	0	0
NOV 9	0.14	0.40	0	0
NOV 17	0.24	0.43	0	0
NOV 24	0.07	0.75	0	0
DEC				
DEC 1	0.12	0.24	0	0
DEC 8	0.11	0.32	0	0
DEC 15	0.14	0.46	0	0
DEC 21	0.14	0.18	0	0
DEC 29	0.14	0.25	0	0

Blank Cell = No Data Collected

AUG				
AUG 5	0.28	0.13	0	0
AUG 11	0.12	0.11	0	0
AUG 18	0.32	0.15	0	0
AUG 25	0.16	0.07	0	0
SEP				
SEP 1	0.10	0.51	0	0
SEP 9	0.21	0.07	0	0
SEP 15	0.16	0.06	0	0
SEP 22	0.22	0.58	0	0
SEP 29	0.29	0.19	0	0
OCT				
OCT 6	0.12	0.11	0	0
OCT 14	0.12	0.77	0	0
OCT 20	0.15	0.12	0	0
OCT 27	0.24	0.20	0	0
NOV				
NOV 3	0.20	0.68	0	0
NOV 9	0.14	0.34	0	0
NOV 17	0.21	0.44	0	0
NOV 24	0.18	0.37	0	0
DEC				
DEC 1	0.11	0.44	0	0
DEC 8	0.22	1.01	0	0
DEC 15	0.24	0.42	0	0
DEC 21	0.15	0.45	0	0
DEC 29	0.14	0.36	0	0

Blank Cell = No Data Collected

AUG				
AUG 5	0.18	0.87	0	0
AUG 11	0.11	0.99	0	0
AUG 18	0.17	1.10	0	0
AUG 25	0.18	1.02	0	0
SEP				
SEP 1	0.17	0.38	0	0
SEP 9	0.17	1.29	0	0
SEP 15	0.11	0.97	0	0
SEP 22	0.29	0.87	0	0
SEP 29	0.10	1.04	0	0
OCT				
OCT 6	0.09	1.19	0	0
OCT 14	0.15	1.23	0	0
OCT 20	0.07	1.28	0	0
OCT 27	0.11	1.28	0	0
NOV				
NOV 3	0.22	0.90	0	0
NOV 9	0.16	0.94	0	0
NOV 17	0.13	1.10	0	0
NOV 24	0.11	1.40	0	0
DEC				
DEC 1	0.11	1.36	0	0
DEC 8	0.30	1.20	0	0
DEC 15	0.08	1.17	0	0
DEC 21	0.09	0.86	0	0
DEC 29	0.11	1.38	0	0

Blank Cell = No Data Collected



Abbotsford Water Distribution System

Recent Water Quality Results

Updated: 25-Jul-16



W16	Turbidity	Total Chlorine	Total Coliforms	E. Coli
	Units	NTU	ppm	counts
	Target	< 1.0	0.2 - 1.2	< 10
JAN				
JAN 6	0.19	1.24	0	0
JAN 13	0.09	0.71	0	0
JAN 20	0.24	0.90	0	0
JAN 27	0.21	0.98	0	0
FEB				
FEB 3	0.19	1.01	0	0
FEB 10	0.19	0.96	0	0
FEB 17	0.09	0.79	0	0
FEB 24	0.15	1.02	0	0
MAR				
MAR 8	0.19	0.76	0	0
MAR 14	0.28	0.90	0	0
MAR 21	0.19	0.72	0	0
MAR 28	0.10	0.99	0	0
APR				
APR 1	0.10	0.90	0	0
APR 8	0.18	1.06	0	0
APR 15	0.10	1.04	0	0
APR 23	0.08	1.01	0	0
APR 29	0.12	0.78	0	0
MAY				
MAY 5	0.14	0.73	0	0
MAY 12	0.10	0.85	0	0
MAY 20	0.29	0.71	0	0
MAY 26	0.10	0.55	0	0
JUN				
JUN 2	0.13	0.74	0	0
JUN 9	0.25	0.74	0	0
JUN 16	0.09	0.88	0	0
JUN 23	0.09	0.60	0	0
JUN 29	0.07	0.71	0	0
JUL				
JUL 7	0.14	0.79	0	0
JUL 14	0.12	0.60	0	0
JUL 21	0.14	0.57	0	0
JUL 28	0.17	0.48	0	0

Abbotsford Water Distribution System

Recent Water Quality Results

Updated: 25-Jul-16



AUG				
AUG 5	0.27	0.39	0	0
AUG 11	0.18	0.56	0	0
AUG 18	0.48	0.55	0	0
AUG 25	0.20	0.43	0	0
SEP				
SEP 1	0.29	0.38	0	0
SEP 9	0.38	0.42	0	0
SEP 15	0.22	0.50	0	0
SEP 22	0.20	0.67	0	0
SEP 29	0.30	0.49	0	0
OCT				
OCT 6	0.43	0.70	0	0
OCT 14	0.16	0.71	0	0
OCT 20	0.20	0.83	0	0
OCT 27	0.23	1.00	0	0
NOV				
NOV 3	0.26	0.78	0	0
NOV 9	0.16	0.90	0	0
NOV 17	0.24	0.89	0	0
NOV 24	0.20	1.00	0	0
DEC				
DEC 1	0.14	1.10	0	0
DEC 8	0.21	0.93	0	0
DEC 15	0.19	0.90	0	0
DEC 21	0.12	0.39	0	0
DEC 29	0.12	1.27	0	0

Blank Cell = No Data Collected



Abbotsford Water Distribution System

Recent Water Quality Results

Updated: 25-Jul-16



Parameter	Description	Acceptable Range
Turbidity	Suspended matter that interferes with the clarity of the water. While not a health concern itself, turbidity is an indicator of possible contamination.	There are no regulations for distribution system turbidity; water system operators aim for less than 1.0 NTU.
Total Chlorine	Used to monitor the level of disinfectant used to inactivate microorganisms such as bacteria and viruses.	There are no regulations for distribution system total chlorine; system operators aim to maintain 0.2 - 1.2 ppm. As long as there are no total coliforms, lower values are not a concern. Higher values are not deemed a health concern unless they exceed the World Health Organization's recommended limit of 5 ppm.
Total Coliforms	A group of bacteria that generally do not cause human disease, but their presence in water may indicate possible contamination.	The BC Drinking Water Act stipulates that no more than 10% of samples during a 30-day period may be positive for Total Coliforms and that no single sample may contain more than 10 counts.
E. Coli	A member of the Total Coliform group and its presence in water indicates contamination.	The BC Drinking Water Act stipulates that no E.Coli should be detected in drinking water.

Note: Turbidity and Total Chlorine are measured with field instruments. Result trends are used as indicators of significant water quality changes; specific values are not necessarily accurate.